

Operator Manual & Parts List

MAJOR
GRASS SLASHERS
& JUNGLE BUSTER



Head Office

Major Equipment Intl. Ltd.
Ballyhaunis,
Co. Mayo,
Ireland.

Tel.: +353 (0) 9496 30572
Fax: +353 (0) 9496 30788
Email: info@major-equipment.com

UK Office

Major Equipment Ltd.
Major Industrial Estate,
Middleton Rd.,
Heysham,
Lancs.
LA3 3JJ

Tel.: +44 (0) 1524 850 501
Fax: +44 (0) 1524 850 502
Email: ukinfo@major-equipment.com

NETHERLANDS & GERMANY OFFICE

Major Equipment Intl. Ltd.
Postbus 29,
NL-7700 AA ,
Dedemsvaart,
Nederland.

Tel: +31 (0) 6389 19585
Email: euinfo@major-equipment.com

Web: www.major-equipment.com



Find us on FACEBOOK
MAJOR MACHINERY



View our channel
MAJOREQUIPMENT

Disclaimer

While every effort has been made in the production of this manual to ensure that the information contained herein is full and correct, Major assumes no responsibility for errors or omissions.

Major reserves the right to modify the machinery and the technical data contained within the manual without prior notice.

Further to this, Major assumes no liability for any damages which may result from the use of the information contained within this manual.

Contents

Introduction

Thank you	1
Using Your Operator's Manual	1
Safety Issues	1

Product Identification

Machine Serial Numbers	1
Product Specifications	1
Register Your Product and Warranty Online	2

Safety

Machine Safety Labels	2
Operating Safely	2
Workstation	3
Regulations for use of the transmission	3
PTO Shaft Safety	3
Hazards	4
Driving safely on public roads	4

Operating the Machine

Inspections before Use	5
Key to Main Parts	6
Starting Regulations	6
Hitching to the tractor	6
Operating the Machine/Mowing	7

Maintenance

Greasing schedule	7
Trouble Shooting	7

Spare Parts

601SL Grass Slasher	8
605SL Grass Slasher	9
Jungle Buster (JB)	10
609SL Grass Slasher	11
Gearboxes	12

EEC certificate of conformity for machines

(conforming to Directive 98/37/EEC)

Company: Major Equipment Ltd.
Address: Coolnaha,
Ballyhaunis,
Co. Mayo,
Ireland.
Tel. +353949630572
Fax +353949630788

declares in sole responsibility that the product:

GRASS SLASHER

When properly installed, maintained and used only for it's intended purpose, complies with all the essential Health & Safety requirements of:

- **THE SUPPLY OF MACHINERY (SAFETY) REGULATIONS 2008.**
- **S.I. No. 299 of 2007**, Safety, Health and Welfare at Work (General Application) Regulations 2007 (Ireland).
- **Health & Safety at Work, etc. Act 1974 (c.37) (UK).**
- **EN ISO 14121-1: 2007** 'Safety of machinery. Principles for risk assessment'.
- **EN 745** - Agricultural Machinery - Rotary Mowers and Flail Mowers - Safety.
- **EN ISO 13857** - Safety of machinery: Safety distances to prevent hazard zones being reached by upper and lower limbs.

I certify on behalf of Major Equipment Int. Ltd., that this machine when properly installed and operated correctly, complies with all the essential Health & Safety requirements of all legislation referred to above.

Signature :



Managing Director

Date 12/01/2012

Introduction

Thank you

We appreciate having you as a customer and wish you many years of safe and satisfied use of your machine.

Using Your Operator's Manual

This manual is an important part of your machine and should remain with the machine when you buy it. Reading your operator's manual will help you and others avoid personal injury or damage to the machine. Information given in this manual will provide the operator with the safest and most effective use of the machine.

Sections in your operator's manual are placed in a specific order to help you understand all the safety messages so you can operate this machine safely. You can also use this manual to answer any specific operating or servicing questions.

Safety Aspects

Your manual contains special messages to bring attention to potential safety concerns, machine damage as well as helpful operating and servicing information. Please read all the information carefully to avoid injury and machine damage.

Intended use

This machine is a grass cutting machine and designed for cutting grass. Moreover, it must only be used with a suitable tractor (see "Product Specifications" section of this booklet) and driven by an adequate drive-line of the tractor PTO. All other use is strictly prohibited.

Product Identification

Machine Serial Numbers

If you need to contact MAJOR or your MAJOR dealer for information on servicing or spare parts, always provide the product model and serial numbers. Model and Serial number can be found on the Serial Plate located on the machine.

We suggest that you record your machine details below:

Model No: _____

Serial No: _____

Date of Purchase: _____

Dealer Name: _____

Dealer Telephone: _____



Register Your Product and Warranty Online

To register your product through the Internet, simply go to the Support section on www.major-equipment.com. Completing the information, either online or with the product warranty card, will ensure the customer that their product receives all post sales service and important product information.

This machine is warranted for 12 months with. No warranty is given where the machine is being used as a hire machine. Warranty is against faulty workmanship or parts.

Warranty covers parts only. All parts must be returned to the manufacturer. No warranty can be considered unless parts are returned. All replacement parts will be supplied on a chargeable basis until warranty has been accepted.

Product Specifications

Model	PTO input	Cutting width	Cutting Range	No. of blades	Power requirements
601SL	540 RPM	1700mm / 5' 7"	10 - 250mm / 1/2" - 10"	2	30 - 60 HP
605SL	540 RPM	1830mm/ 6'	10 - 250mm / 1/2" - 10"	2	30 - 60 HP
Jungle Buster	1000 RPM	1680mm/ 5' 6"	50 - 250mm/ 2" - 10"	3	50 - 150 HP
609SL	540 RPM	1955mm/6' 4"	100 - 187mm/4" - 7.5"	2	30 - 60 HP

Safety

Machine Safety Labels

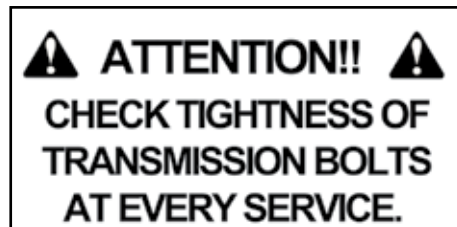
The machine safety labels shown in this section are placed in important areas on your machine to draw attention to potential safety hazards.

On your machine safety labels, the words DANGER, WARNING, and CAUTION are used with this safety alert symbol. DANGER identifies the most serious hazards.

The operator's manual also explains any potential safety hazards whenever necessary in special safety messages that are identified with the word, CAUTION, and the safety-alert symbol



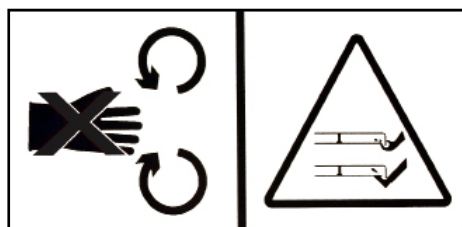
To avoid injury, read the manual



Check the tightness of the transmission



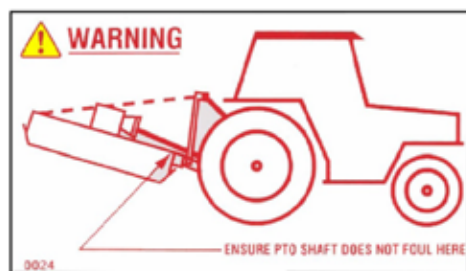
PTO entanglement hazard - keep clear of PTO drives.



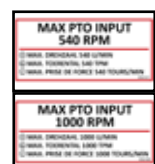
Rotating blade hazard



Grease points



Maximum speed



Hazards associated with operating Grass Cutting Machinery

Shear Hazard

Shear hazards are created when the edges of two objects move toward or next to each other closely enough to cut relatively soft material. This can include the parts of the machine under hydraulic control when operating from transport to mowing position. Note, the wing units are designed to float independently of the centre deck & are free to move within operating limits.

Crush Hazard

Bystanders can be injured when machine is lowered into mowing position. Winged machines have crush points around the hinge areas & between the wing & main body. Always use transport locking bars when not in use (winged models only).

Rotating Blade Hazard

All persons are at risk if they place their hands or feet under the machine when it is raised from the ground when the blades are in motion.

Pinch Hazard

Pinch points are created when two objects move together, with at least one of them moving in a circle. This hazard is common in power transmission devices such as Belt Drives, Gear Drives & Rollers. Ensure all guarding is present.

Wrap Hazard

Any exposed, rotating machine component is a potential wrap point. Injuries usually occur when loose clothing or long hair catch on and wrap around rotating parts such as PTO shafts or Drive shafts on the machine. Ensure all guarding is present.

Free-wheeling parts Hazard

The heavier a revolving part is, the longer it will continue to rotate after power is shut off. This characteristic is called 'free-wheeling.' Blades, and various other components, drive shafts etc., will continue to move after power is shut off - often for several minutes. Injuries occur when:

- Operators shut off equipment, and attempt to clean or adjust a machine before components have completely stopped moving.
- Shear bolt protection device in PTO shaft shears & the mowing parts are still spinning but the primary PTO shaft is stationary. Operator awareness is the key to safety around freewheeling parts. Never raise the machine while the blades are still rotating.

Thrown objects Hazard

Machines throw material as a natural part of doing their job. Foreign objects, such as stones, sticks and other debris, may be taken into this equipment and expelled at tremendous speed. These objects are contained by the sides of the machine and by the rear/front rollers / guards / chain guards / rubber skirts depending on model of your machine.

Ensure bystanders are clear from the machine & cannot be hit with debris expelled from the machine. Bystanders or animals in the path of thrown objects could be seriously injured. Never operate machine with decks raised from the ground as this makes the front/rear protection redundant.

Hydraulic Hazard (if applicable)

Hydraulic systems store considerable energy. Careless servicing, adjustment, or replacement of parts can result in serious injury. High pressure blasts of hydraulic oil can injure eyes or other body parts. The following precautions are crucial:

- Make certain the hydraulic pump is turned off.
- Lower attached equipment to the ground.
- Confirm that load pressure is off the system.

A pinhole leak in an hydraulic hose is a serious hazard. A leak may not be visible, and the only sign may be a few drops of fluid. Never inspect hydraulic hoses with your hands, because a fine jet of hydraulic fluid can pierce the skin.

Slips, Trips and Falls Hazard

Slips and falls often result from:

1. Slippery footing on the ground
2. Cluttered steps and work platforms.

The potential for slips and falls can be greatly reduced by using good judgement and practicing good housekeeping on and around equipment.

Noise Hazard

Please note that the machine is normally used outdoors and that the position of the operator is seated in the driving seat of the tractor. It is advisable to consult the prescriptions listed in tractor operator and maintenance manuals.

The acoustic pressure at a distance of 2.6m from the centre of the machine and at a height of 2.0m, with the implement operating in a no load condition can reach 90 dBA. In a loaded condition & a PTO rate of 540 rpm the value can reach 97dBA. Higher rate of PTO input will result in in higher noise levels. Always wear hearing protection.

Operating Safely

This MAJOR machine is designed to operate at a PTO rate which is stated in the Product Specifications part of this booklet. Ensure tractor PTO output is set at a correct RPM rate. This MAJOR machine must only be used for purposes outlined in the Intended Use section of this booklet. All other use is strictly prohibited.



Users should become thoroughly familiar with the contents of this manual before using, servicing and mounting the implement to the tractor and all other pertinent operations. Never wear jewellery, loose clothing such as ties, scarves, belts, unbuttoned jackets or dungarees with open zips which could become caught up in moving parts.



Always wear approved garments complying with accident prevention provisions such as non-slip shoes, ear muffs, goggles and gauntlets. Wear a jacket with reflecting stickers if the implement is used near public highways.



Consult your retailer, the Labour Health Service or your nearest equivalent authority for the information about the current safety provisions and specific regulations with in order to ensure personal safety.



ALWAYS DISENGAGE PTO, SWITCH OFF THE TRACTOR ENGINE AND ENGAGE THE PARKING BRAKE BEFORE MAKING ADJUSTMENT TO THE MACHINE.



NEVER PLACE LIMBS UNDER THE MACHINE WHILE ROTOR(S) ARE TURNING. ROTOR(S) CAN REMAIN TURNING FOR UP TO 1 MINUTE AFTER DISENGAGING PTO.

Workstation

The operator must remain seated while working the machine. If the machine is a winged unit and the wings need to be raised/lowered the operator must not leave the tractor. Always ensure the PTO has been turned off and the parking brake applied before leaving the tractor cab or carrying out maintenance.



NEVER OPERATE THE HYDRAULICS WITH THE TRACTOR SWITCHED OFF

Regulations for use of the transmission

The transmission to the gearboxes is protected throughout the machine by both PTO shafts and bolt down covers. All guarding should be kept efficient and in good condition. If the condition is poor, the guarding should be renewed before the implement is used.



UNLESS IT IS CORRECTLY PROTECTED THE TRANSMISSION COULD CAUSE DEATH SINCE IT CAN CATCH ON PARTS OF THE BODY OR CLOTHING

Ensure retaining chains are correctly anchored on all PTO shafts, preventing them from turning. Ensure drive line can turn easily within the shield. Keep spline grooves clean and greased so that PTO shaft can connect easily. Besides being described in this booklet, the method by which the PTO shaft is connected to the tractor must be checked out with the instructions in the tractor manufacturer's manual.

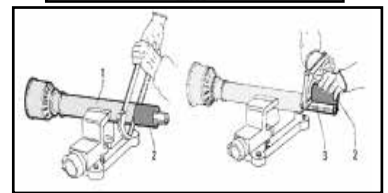
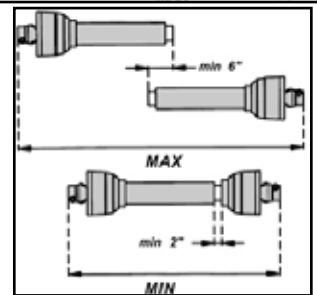
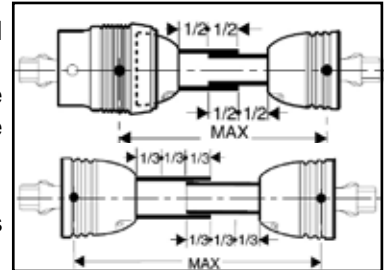
PTO Shaft Safety

Maximum PTO input is specified in the Product Specifications section of this booklet. Contact your nearest dealer or a specialised retail outlet if the PTO must be replaced with a longer one, since this must belong to the same power category and possess the same characteristics. An unsuitable PTO could easily break.

The tractor PTO shaft length may be altered to suit the individual tractor model. When the machine is in operation, the PTO shaft should have a minimum 1/3 engagement as shown in the diagrams. After the machine has been hitched to the tractor, it should be checked in various positions that the drive line is the correct length. If the PTO is too short and tends to slip out of place, it must be replaced with a longer one.

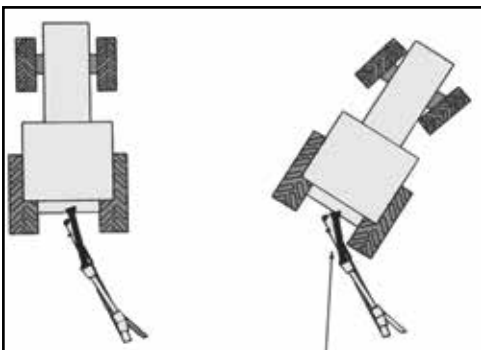
If the PTO shaft is too long, it should be shortened in the following way:

- Set the machine at a minimum distance from the tractor, then brake the tractor and switch off the engine.
- Separate the two halves of the PTO. Insert the female part into the tractor PTO and the male part into the machine PTO, checking that the position is correct by means of the fixing pins.
- Line up the two halves of the PTO together, keeping them parallel.
- Using a felt tip pen, match mark the place where the two halves must be shortened as shown.
- First cut shield "1" and use part "2" as a reference to cut the splined shaft.
- Proceed in the same way for the second half.
- Trim and chamfer the two cut ends of the PTO and clean off all swarf and shavings.
- Grease the two profiles and join the two halves of the PTO together.
- Mount the PTO shaft and check that its length is correct as before.



Trailed machine operation.

Ensure that the PTO doesn't catch the wheel of the tractor when turning sharply.



Driving Safely on Public Roads

Check the local Highway Code regulations before driving the tractor on public highways with an implement attached. Check the reflectors, hazard flashers and/or projecting load indicators are installed when required and efficient. These indicators must be installed correctly and easily seen by the drivers of other vehicles.

Bystanders must not be allowed to lean against or climb onto the machine during transport or while working. Do not allow bystanders to ride on the machine.



MAXIMUM TRANSPORT SPEED MUST NOT EXCEED 30 km/hr (18 MPH)

General safety instructions

Precautions to be taken while working with the machine:

1. Do not operate the machine when you are tired;
2. Before starting mowing, make sure that the area is clear of people or animals.
3. Before starting adjusting the machine, it is mandatory to disconnect the PTO, to turn off the engine of the tractor, apply handbrake and wait for the turning parts to become still and placed on the ground.
4. It is mandatory to read all the safety requirements and the operator's manual of the machine.
5. If you are not sure how to use the machine, please contact the manufacturer or the dealer.

Operating the Machine

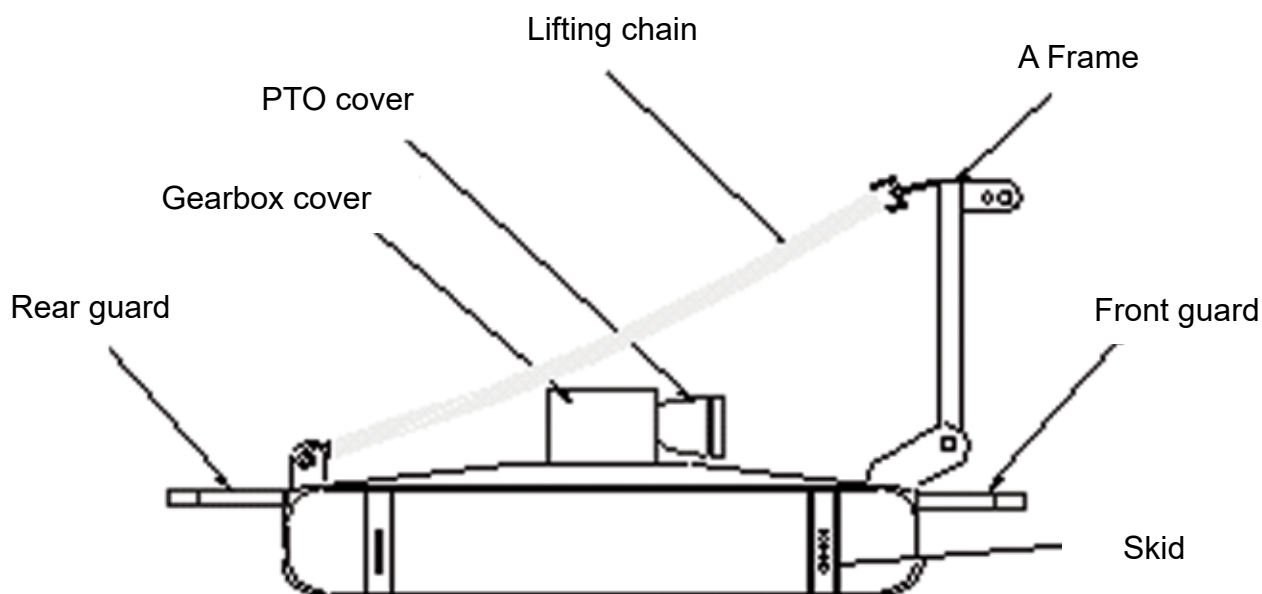
Inspections before Use



Always disengage PTO, Switch off tractor engine and engage the parking brake before making adjustments to the machine.

1. With the whole machine as level as possible, check the oil level in the gearboxes. Top up as required with SAE EP90 gear oil through the oil filler plug indicated. The correct level is at the oil level plug indicated.
2. Grease the PTO shaft universal joints, drive shaft bearing and carrying arm pivots.
3. Re-sharpen old blades with a grindstone if necessary. Replace bent blades with new ones.
4. Check the blade mounting bolts are tight
5. Ensure the gearbox shaft nuts are tight and retained in place by split pin.
6. Check tightness of all nuts, bolts and retaining screws after the first and second hours of work.
7. Ensure safety guards and flaps are in place at all times where fitted.
8. Due to the corrosive nature of grass when cut, wash down the machine when finished mowing, especially when the machine is being stored for a long period of time.

Key to Main Parts



Starting Regulations

Always check that any imminently dangerous conditions have been eliminated before using the machine. Ensure all guarding is present and the operator is fully aware of the operations of the machine.



Always ensure the pins lock the PTO shaft yoke ends onto the spline shafts on both the tractor and the implement. An unlocked shaft could slip out of position, causing notable mechanical damage and serious injury to both operator and bystanders.

Hitching to the tractor



ALWAYS OPERATE ON LEVEL GROUND WHEN HITCHING/UNHITCHING THE IMPLEMENT. THIS WILL PREVENT DANGEROUS MOVEMENT. NEVER ALLOW ANYONE TO STAND BETWEEN THE TRACTOR AND THE MACHINE.

1. Reverse the tractor,
2. Ensure the tractor parking brake is applied
3. Connect the lower link arms & Top Link. Secure both in position with correct size pin.
4. Fit the PTO shaft & secure the PTO cover chains.
5. Check all guarding is present & secured.
- 6.

Transport Position

1. Check machine is hitched to the tractor as described.
2. Ensure the tractor parking brake is applied
3. Lift the machine into transport position.

Operating the Machine/Mowing

The MAJOR Pasture Topper is designed to operate at a max 540 rpm (1000 RPM Jungle Buster. Always operate on level ground when hitching / unhitching the implement. This will prevent dangerous movement. Never allow anyone to stand between the tractor and the pasture topper.

1. Ensure the machine is hitched correctly to the tractor as previously described.
2. Ensure bystanders are clear from the machine & cannot be hit with debris expelled from the machine.
3. Ensure cutting decks are lowered to the ground.
4. Start up the tractor PTO at a low RPM.
5. Build up to operating speed, select a suitable forward gear & proceed to cut grass.

Maintenance

The machine must always be disconnected from the tractor before any cleaning, lubricating and servicing operations can be carried out. Ensure that the Rear and Side decks are locked up while performing maintenance. If emergency operations are required whilst the machine is connected to the tractor, switch off the engine, engage the parking brake and disengage the PTO. Good, regular maintenance and correct use are essential if the grass topper is to remain safe and long lasting.

NOTE: Maintenance must be carried out by qualified personnel.

Greasing schedule

Please grease the following:

	Initially	After 8 hours work
PTO Shafts	●	●

Lubricate moveable mechanical joints when required. All nuts and bolts in the transmission including PTO shafts and gearboxes should be checked for tightness after mowing at the following intervals:

- 1st 50 acres
- 1st 100 acres
- 1st 250 acres and every 250 acres thereafter

Trouble Shooting

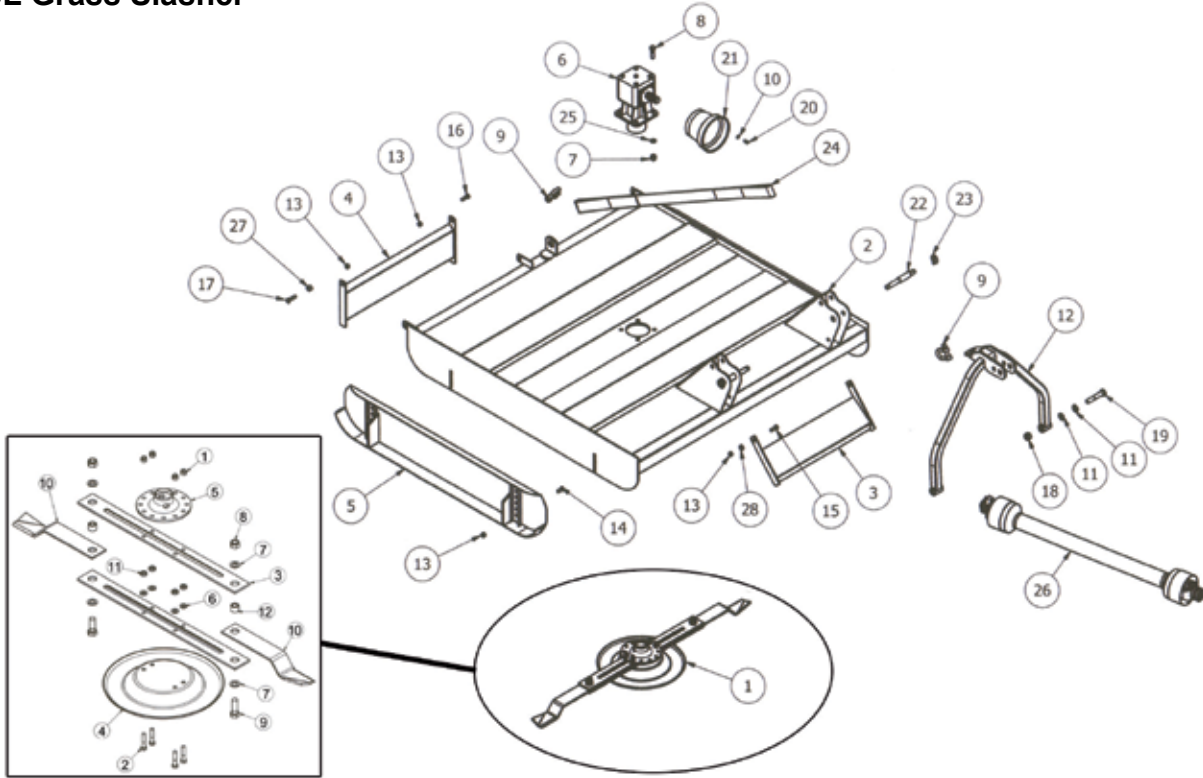
FAULT	POSSIBLE CAUSE	REMEDY
Irregular cut	Worn or broken blades	Sharpen or replace blades
Noisy machine	Loose parts	Check all bolts are fully tightened.
	Insufficient oil in gearbox.	Check oil level and top up as necessary.
	Incorrect PTO R.P.M. rate.	Check PTO R.P.M. and adjust as necessary.
Excessive vibration	Loose parts.	Check all bolts are fully tightened.
	Incorrect PTO rate.	Check PTO R.P.M. and adjust as necessary.
	Broken or missing blade or blade bent following impact	Check blades and replace if necessary.

Spare Parts - Slashers

Use Genuine Parts

For best results you should always choose genuine parts for your machines. MAJOR spare parts are identical to those used on our machines during assembly. They have been developed by our R&D department and tested thoroughly to meet high quality standards. This also means that genuine MAJOR parts have the correct dimensions and specifications as the parts originally on your machine.

601SL Grass Slasher



Item	Part No	Description	Qty
1	SL61-BLDL	601 BLADE ASSY (STD)	1
2	SL61-BOD	601 SLASHER BODY	1
3	SL61-FG	FRONT GUARD	1
4	SL65RG	REAR GUARD	2
5	SLH16AS	SKID SKID 601	2
6	LF205	6 SPLINE "L" BOX RATIO 1.47 (205.871)	1
7	5/8F	5/8" FINE NYLOC NUT	4
8	58x214FBZP	5/8"x2 1/4" FINE BOLT	4
9	EW29A	5/8" "D" SHACKLE	2
10	FWM8	M8 FLAT WASHER	4
11	FWM20	M20 Flat Washer	4
12	GM2	STANDARD A-FRAME	1
13	M12	M12 NYLOC NUT	13
14	M12x30SZP	M12x30 SET BOLT	8

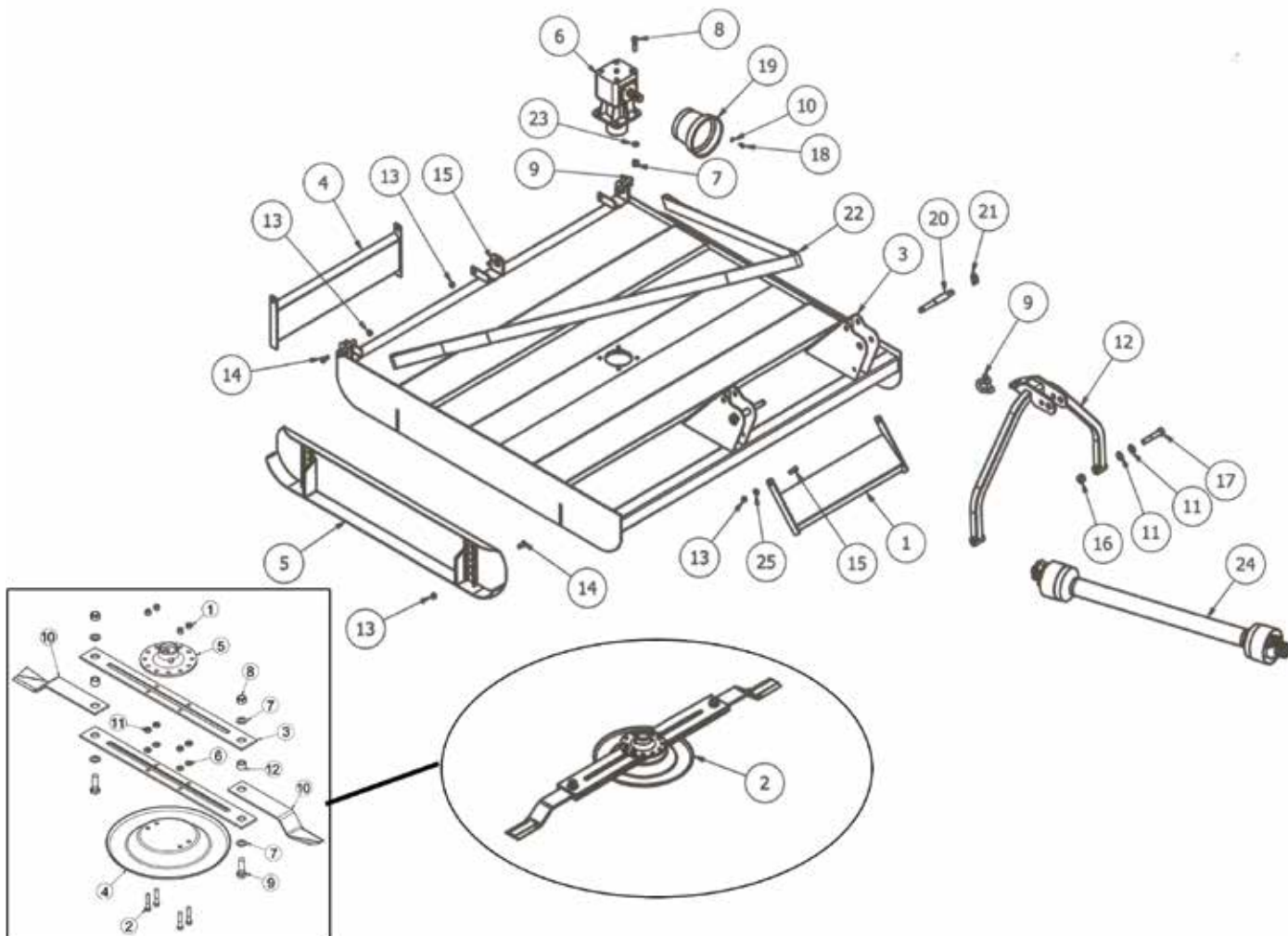
15	M12x35BZP	M12x35 BOLT	2
16	M12x40BZP	M12x40 BOLT	1
17	M12x50BZP	M12x50 BOLT	2
18	M20	M20 NYLOC NUT	2
19	M20x110BZP	M20x110 BOLT	2
20	M8x16SZP	M8x16 SET BOLT	4
21	NT20A	PTO GUARD (RND)	1
22	S15707	CAT 1/2 LINK PIN	2
23	3546	LINCH PIN DIA 9.5	2
24	SL601	601 SL STRAP (1600mm)	1
25	SW58	5/8" SPRING WASHER	4
26	T40BO-1100	PTO Shaft 601 Slasher	1
27	12T-BBS	BLADE BACK SPACER	2
28	8SM9/3	Spacer	8

601SL Grass Slasher Blade Assembly

Item	Part No	Description	Qty
1	1/2F	1/2" Nyloc Nut	12
2	12x212FBZP	1/2"x2 1/2" FINE BOLT	4
3	8SM9/2	BLADE BACK (769 CTR)	2
4	9GT-USS	Under sole skid	
5	DF-BMP	BLADE MOUNT	1
6	FW12	12" FLAT WASHER	4

7	FWM20	M20 FLAT WASHER	4
8	M20	M20 NYLOC NUT	2
9	M20x60BZP	M20x60 BOLT	2
10	NTSB10A/1	SWING BLADE (Anti-Clk)	2
11	8SM9/3	Spacer	8
12	8SM9/4	Blade bushing (std)	4

605SL Grass Slasher



Item	Part No	Description	Qty
1	SL61-FG	FRONT GUARD	1
2	SL65-BLD	605 BLADE ASSY (STD)	1
3	SL65-BOD	605 SLASHER BODY	1
4	SL65RG	REAR GUARD	2
5	SLH16AS	SKID 605	2
6	LF205	6 SPLINE "L" BOX RATIO 1.47 (205.871)	1
7	5/8F	5/8" FINE NYLOC NUT	4
8	58x214FBZP	5/8"x2 1/4" FINE BOLT	4
9	EW29A	5/8" "D" SHACKLE	3
10	FWM8	M8 FLAT WASHER	4
11	FWM20	M20 Flat Washer	4
12	GM2	STANDARD A-FRAME	1
13	M12	M12 NYLOC NUT	13

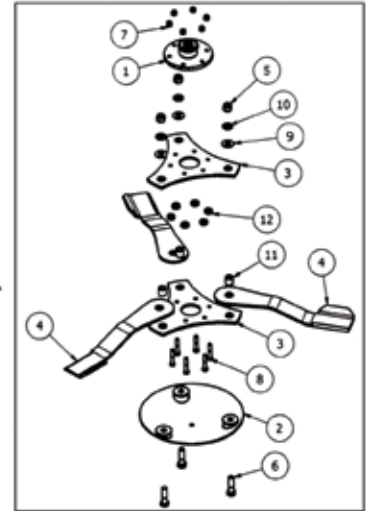
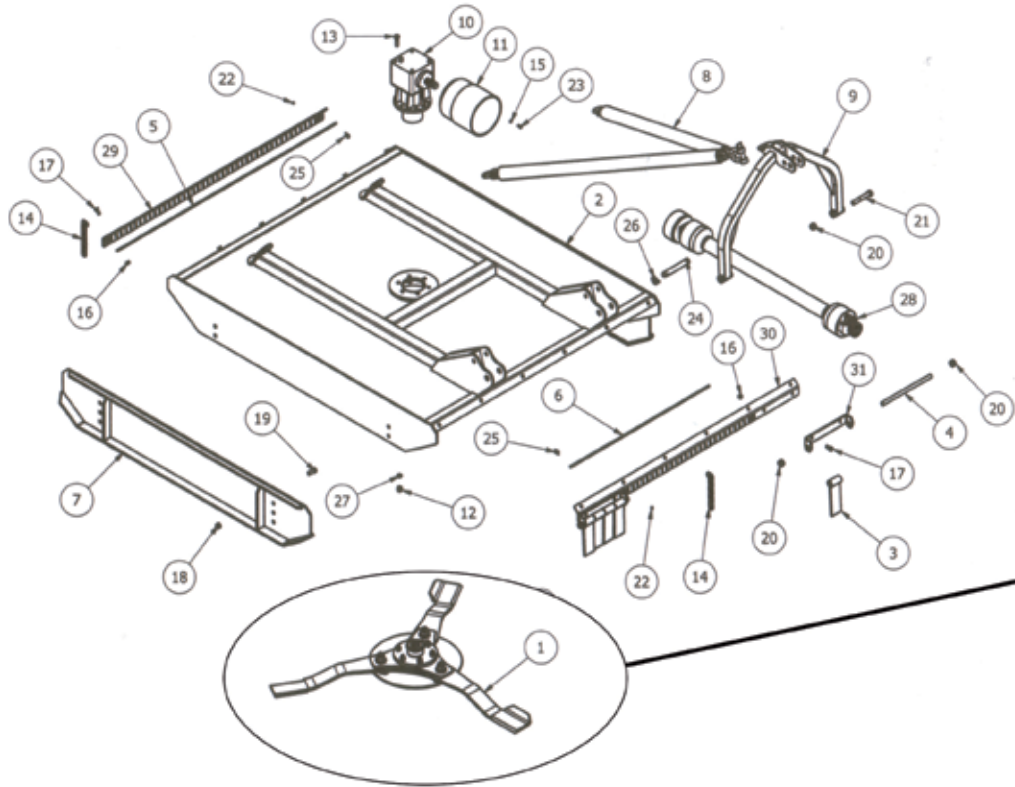
14	M12x30SZP	M12x30 SET BOLT	10
15	M12x35BZP	M12x35 BOLT	3
16	M20	M20 NYLOC NUT	2
17	M20x110BZP	M20x110 BOLT	2
18	M8x16SZP	M8x16 SET BOLT	4
19	NT20A	PTO GUARD (RND)	1
20	S15707	CAT 1/2 LINK PIN	2
21	3546	LINCH PIN DIA 9.5	2
22	SL605	605 SL STRAP (3850mm)	1
23	SW58	5/8" SPRING WASHER	4
24	T50BO-1100	PTO Shaft 605 Slasher	1
25	8SM9/3	Spacer	8

605SL Grass Slasher Blade Assembly

Item	Part No	Description	Qty
1	1/2F	1/2" Nyloc Nut	12
2	12x212FBZP	1/2"x2 1/2" FINE BOLT	4
3	6SL-NB	BLADE BACK (925 CTR)	2
4	9GT-USS	Under sole skid	
5	DF-BMP	BLADE MOUNT	1
6	DSW45	DISC SPRING 45x22.4x2.5	4

7	FW12	12" FLAT WASHER	8
8	M20	M20 NYLOC NUT	2
9	M20x60BZP	M20x60 BOLT	2
10	SLH11C	605 SLASHER BLADE	2
11	6SL/B	605 BLADE BUSH	2
12	8SM9/3	Spacer	8

Jungle Buster (JB)

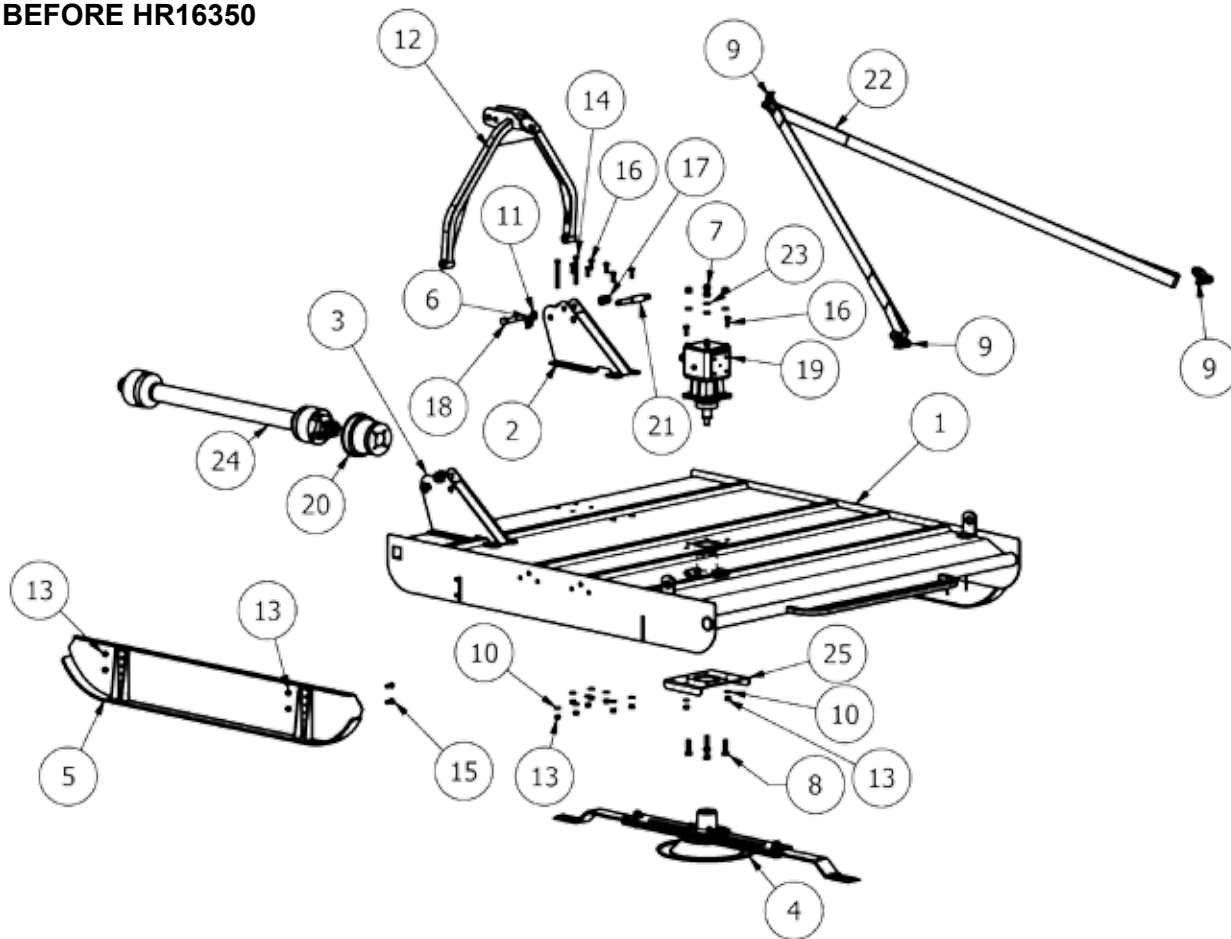


Item	Part No	Description	Qty
1	16WT-BBA	JB WING BLADE ASSY (Front Mt)	1
1	16WT-WBB	JB WING BLADE ASSY (Rear Mt)	1
2	FS18-B01	FORESTRY 180 BODY	1
3	FS18-FG01	FRONT FLAP GUARD	8
4	FS18-FG04	FRONT FLAP BAR	2
5	FS18-FG05	REAR CHAIN BAR	1
6	FS18-FG06	FRONT CHAIN BAR	1
7	FS18-SK01	FS180 SKID	2
8	FS180-STRAP01	Jungle Buster CHAIN SLING	1
9	123RMA01	HEAVY A-FRAME	1
10	LF149/B	LF149 GEARBOX 149.036.00	1
11	190000705	2 PIECE PTO GUARD	1
12	5/8F	5/8" FINE NYLOC NUT	6
13	58x214FBZP	5/8"x2 1/4" FINE BOLT	6
14	FS18-CH02	3/8" CHAIN STRAP	73
15	FWM8	M8 FLAT WASHER	4
16	M12	M12 NYLOC NUT	16
17	M12x30SZP	M12x30 SET BOLT	16
18	M16	M16 NYLOC NUT	8
19	M16x40SZP	M16x40 SET BOLT	8
20	M20	M20 NYLOC NUT	6
21	M20x130BZP	M20x130 BOLT	2
22	M6	M6 NYLOC NUT	8
23	M8x16	M8x16 SET BOLT	4
24	112	CAT 2 PIN DIA 28.5x159mm	2
25	1373	M8xDIA 9 U-BOLT	4
26	3546	LINCH PIN DIA 9.5	2
27	SW58	5/8" SPRING WASHER	6
28	T601210ENC12RW6	T60 FIXED SLIP CLUTCH	1
29	FS18-CG01	3/8" CHAIN MOUNT (REAR)	1
30	FS18-CG02	3/8" CHAIN MOUNT (FRONT)	1
31	FS18-FG03	GUARD MOUNT (FRONT)	2

Jungle Buster Blade Assembly

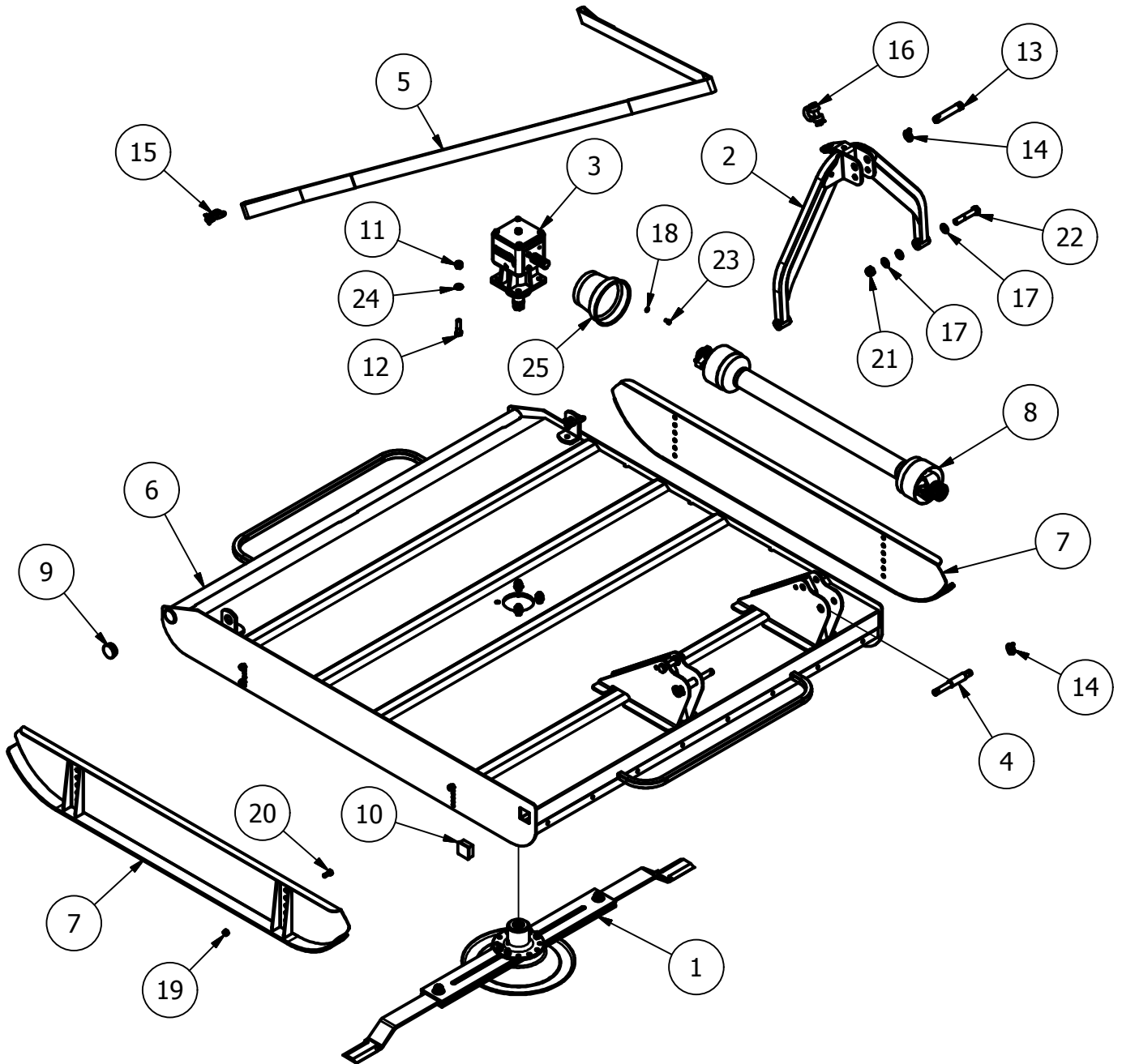
Item	Part No.	Description	Qty
1	16WT-BM1	16WT BLADE MOUNT	1
2	16WT-USS	UNDERSOLE PAN SKID	1
3	16WT-BBK	16WT BLADE BACK	2
4	16WT-BB	16WT BODY BLADE	3
5	1F	1" FINE NYLOC NUT	3
6	1x312FBZP	1"x3 1/2" FINE BOLT	3
7	58F	5/8" FINE NYLOC NUT	6
8	58x314FBZP	5/8"x3 1/4" FINE BOLT	6
9	D60253	DISC SPRING 60x25.4x3	3
10	FW1	DIA 1" FLAT WASHER	3
11	16WT-BBB	BLADE BACK BUSH	3
12	16WT-BBS	BLADE BACK SPACER	6

609SL Grass Slasher
BEFORE HR16350



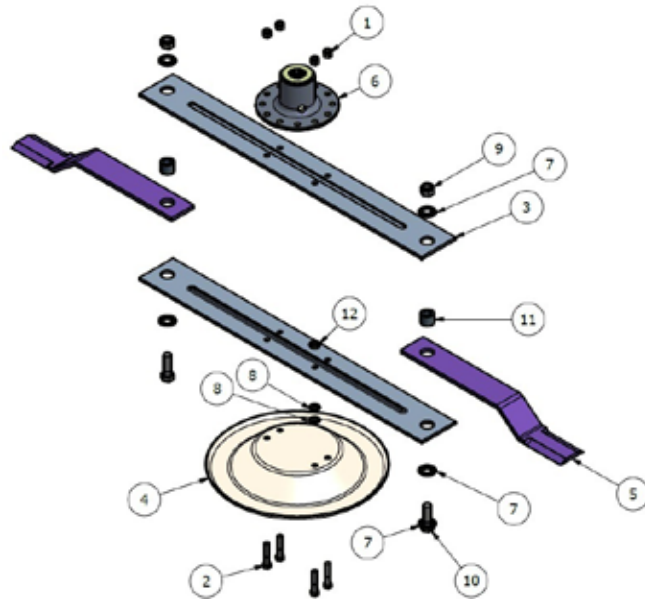
Item	Part No.	Description	Qty
1	SL609-BGA	SLASHER BODY WELDMENT	1
2	SL609-LMW	SLASHER LINKAGE WELDMENT	1
3	SL609-LMW-H	HANDED LINKAGE WELDMENT	1
4	SL69-BLD	609 BLADE ASSY (STD)	1
5	SL69-SKD	SKID (OFFSET)	2
6	3546	LINCH PIN DIA 9.5	2
7	5/8F	5/8" FINE NYLOC NUT	4
8	58x214FBZP	5/8"x2 1/4" FINE BOLT	4
9	EW29A	5/8" 'D' SHACKLE	3
10	FWM12	M12 FLAT WASHER	18
11	FWM20	M20 FLAT WASHER	4
12	GM2	STANDARD A-FRAME	1
13	M12	M12 NYLOC NUT	26
14	M12x120BZP	M12x120 BOLT	4
15	M12x30SZP	M12x30 SET BOLT	8
16	M12x35BZP	M12x35 BOLT	14
17	M20	M20 NYLOC NUT	2
18	M20x110BZP	M20x110 BOLT	2
19	MJ40L (347800)	6 SPLINE 'L' BOX RATIO 1.47	1
20	NT20A	PTO GUARD (RND)	1
21	S15707	CAT 1/2 LINK PIN	2
22	SL605	605 SL STRAP (3850mm)	1
23	SW58	5/8" SPRING WASHER	4
24	T501160CEC12B02	T50 SHEAR BOLT	1
25	SL609-B003	GEARBOX UNDERPLATE	1

609SL Grass Slasher AFTER HR16350



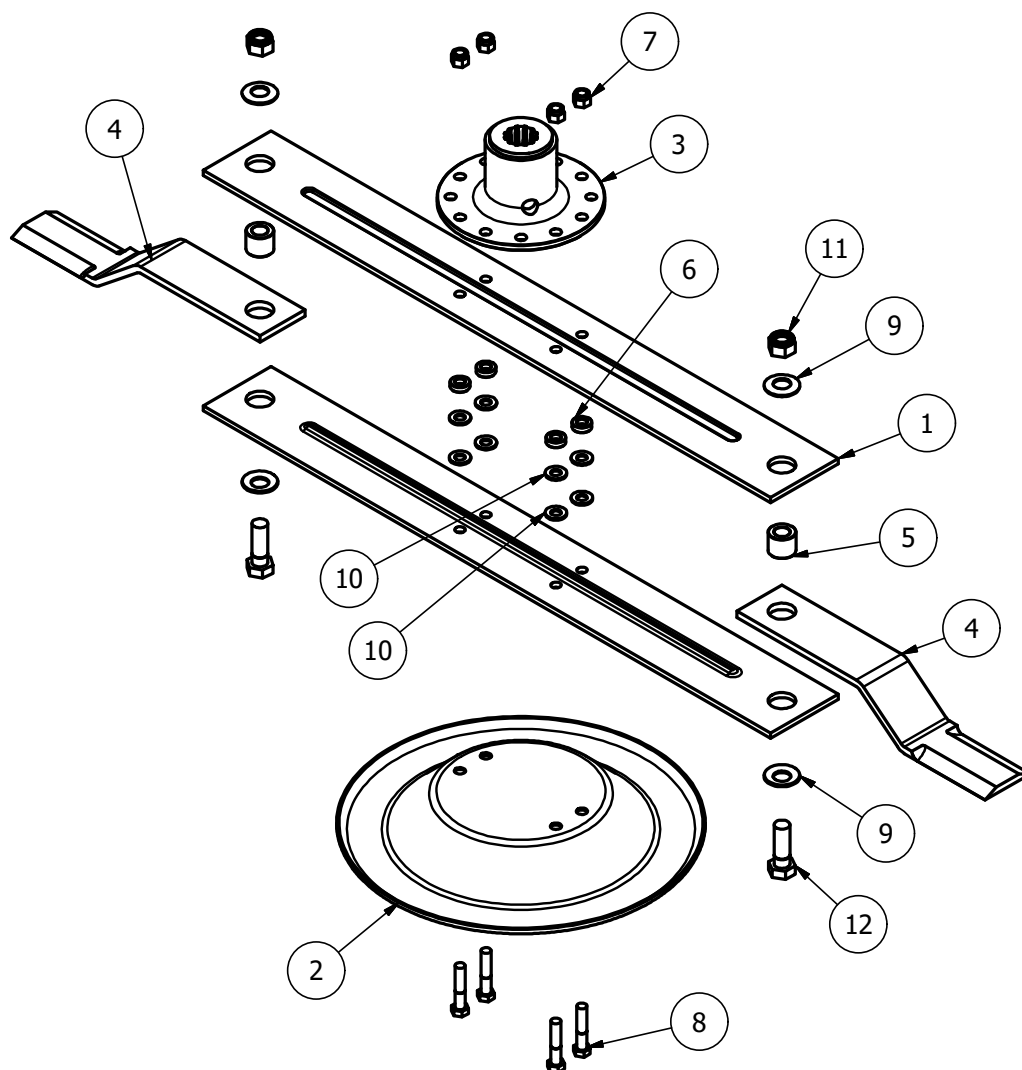
Item	Part No.	Description	Qty
1	SL69-BLD	609 BLADE ASSY (STD)	1
2	GM3	STANDARD A-FRAME	1
3	MJ40L (347800)	6 SPLINE 'L' BOX RATIO 1.47	1
4	S15707	CAT 1/2 LINK PIN	2
5	SL605	605 SL STRAP (3850mm)	1
6	SL609-BGA	609 SLASHER BODY	1
7	SL69-SKD	SKID (OFFSET)	2
8	T501160CEC12B02	T50 SHEAR BOLT	1
9	199209	DIA 50.5-54mm INSERT	2
10	199211	SQ 52-54mm INSERT (POL)	2
11	5/8F	5/8" FINE NYLOC NUT	4
12	58x214FBZP	5/8"x2 1/4" FINE BOLT	4
13	81	CAT 2 PIN DIA 25.4x110mm	1
14	AN099/10	LINCH PIN DIA 9.5	3
15	DSR-1-2	1/2" RATED 'D' SHACKLE	2
16	DSR-5-8	5/8" RATED 'D' SHACKLE	1
17	FWM20	M20 FLAT WASHER	6
18	FWM8	M8 FLAT WASHER	4
19	M12	M12 NYLOC NUT	8
20	M12x30SZP	M12x30 SET BOLT	8
21	M20	M20 NYLOC NUT	2
22	M20x110BZP	M20x110 BOLT	2
23	M8x16SZP	M8x16 SET BOLT	4
24	NL16SP	M16 SP NORDLOCK	4
25	NT20A	PTO GUARD (RND)	1

609 Slasher Blade Assembly



Item	Part No.	Description	Qty
1	1/2F	1/2" FINE NYLOC NUT	4
2	12x212FBZP	1/2"x2 1/2" FINE BOLT	4
3	6SL-NB	BLADE BACK (925 CTR)	2
4	9GT-USS	UNDER SOLE SKID	1
5	BLD-51535	609 SLASHER BLADE	2
7	DSW45	DISC SPRING 45x22.4x2.5	5
8	FW12	12" FLAT WASHER	2
9	M20	M20 NYLOC NUT	2
10	M20x60BZP	M20x60 BOLT	2
11	6SL-BB	605 BLADE BUSH	2
12	8SM9-3	BLADE BACK SPACER	1

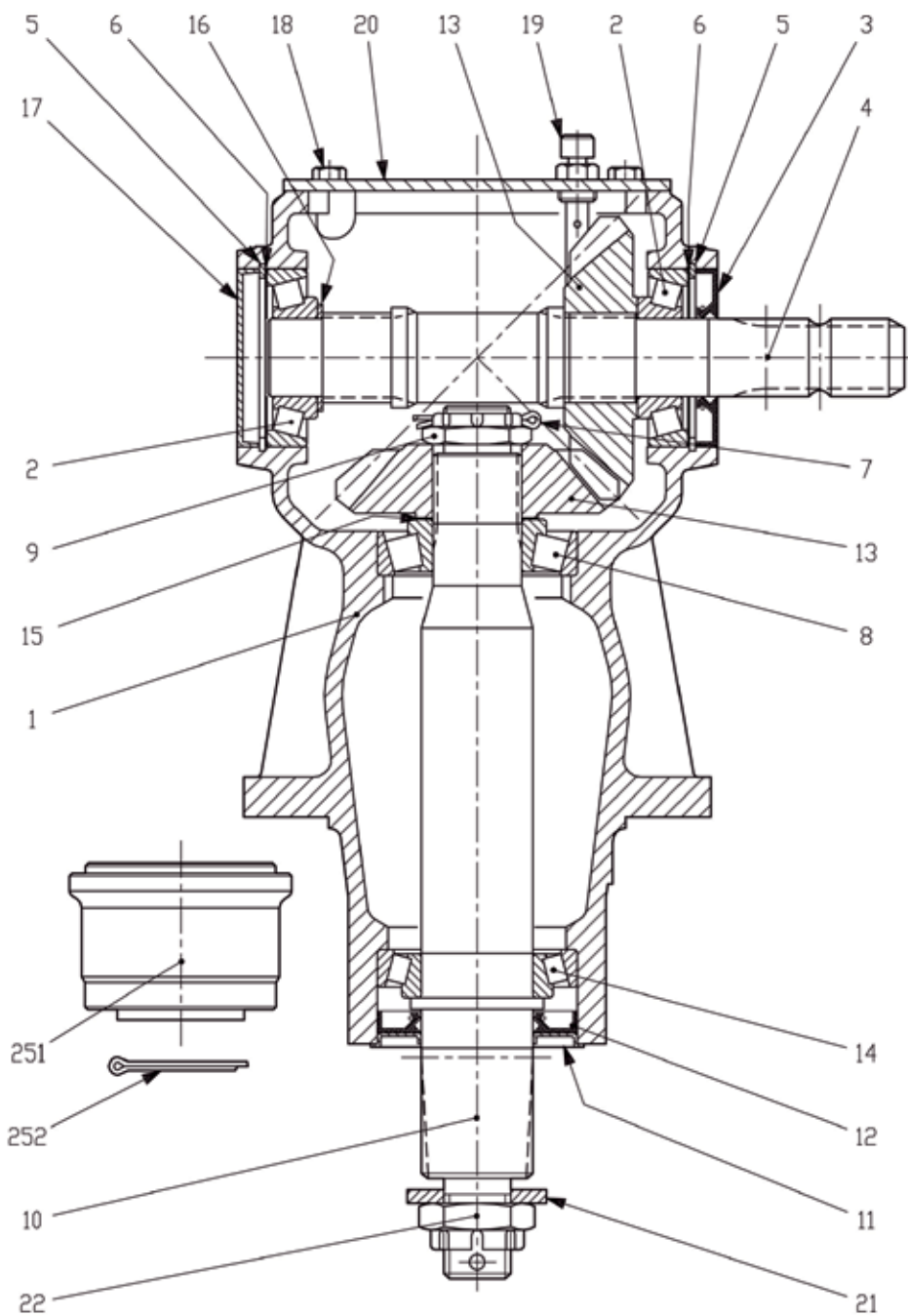
605 Slasher Blade Assembly



Item	Part No.	Description	Qty
1	6SL-NB	BLADE BACK (925 CTR)	2
2	9GT-USS	UNDER SOLE SKID	1
3	DF-BMP	J205 G/BOX BLADE MOUNT	1
4	SLH11C	605 SLASHER BLADE	2
5	6SL-BB	605 BLADE BUSH	2
6	8SM9-3	BLADE BACK SPACER	4
7	1/2F	1/2" FINE NYLOC NUT	4
8	12x212FBZP	1/2"x2 1/2" FINE BOLT	4
9	DSW45	DISC SPRING 45x22.4x2.5	4
10	FW12	1/2" FLAT WASHER	8
11	M20	M20 NYLOC NUT	2
12	M20x60BZP	M20x60 BOLT	2

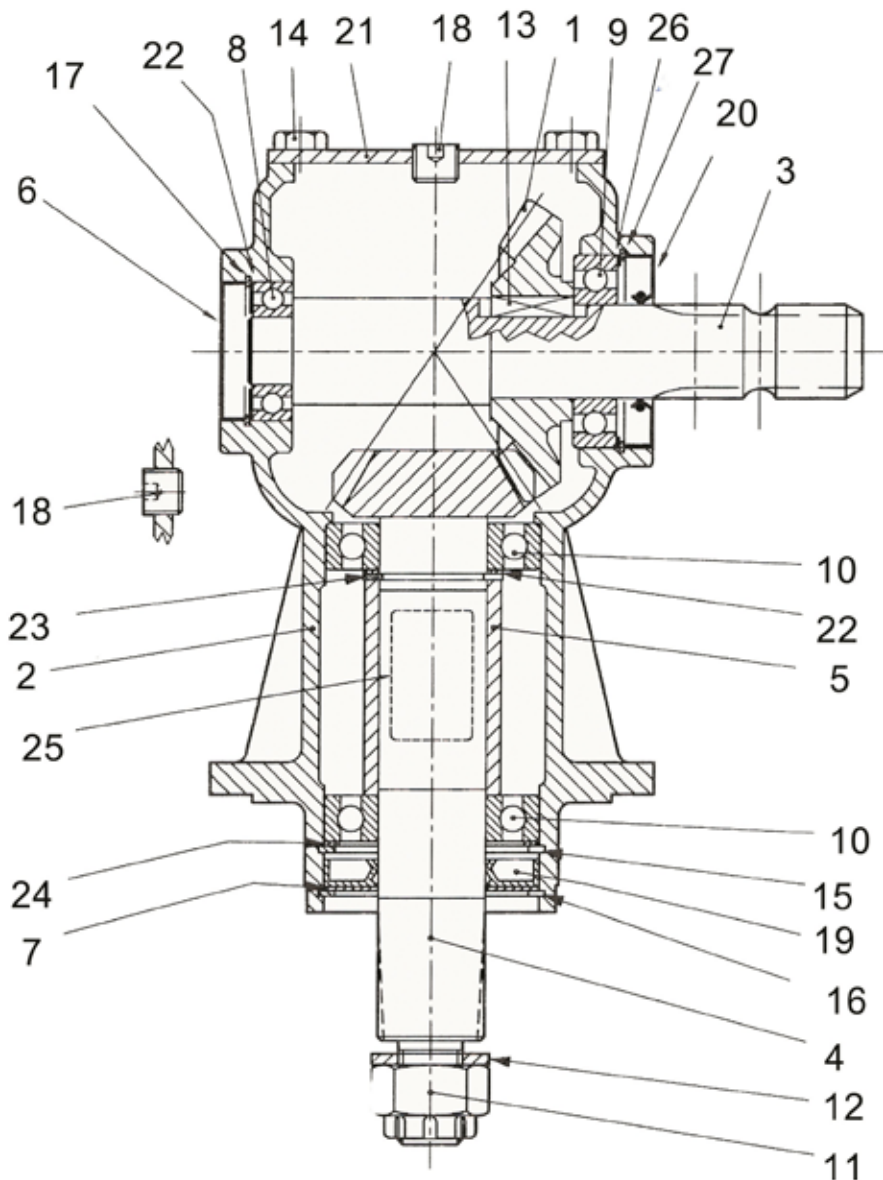
Gearboxes

LF149/B (9.149.036.00) Gearbox Breakdown



Item	Part No	Description	Qty
1	0.149.0301.00	CASING	1
2	8.0.9.00129	BEARING 30307	2
3	8.7.1.00315 (358010)	DOUBLE LIP SEAL 35X80X10	1
4	0.149.2001.00	SHAFT 1"3/8 Z6	1
5	85200030	SNAP RING 80 UNI7437	2
6	0.267.7500.00	SHIM 79.9	2
7	8.4.7.01111	COTTER PIN B4X55	1
8	8.0.9.00128	BEARING 30308	1
9	0.132.7106.00	NUT M30X1.5	1
10	0.149.3000.00	SHAFT ASA DP 8/16	1
11	0.139.7100.00	PROTECTIVE WASHER	1
12	8.7.1.01107	DOUBLE LIP SEAL 50X90X10	1
13	0.149.5000.00	GEAR Z20 M6.25	2
14	8.0.9.00469	BEARING 30210	1
15	0.244.7500.00	SHIM KIT 40.3x51.5	1
16	0.259.7525.00	SHIM 35.3x2.5	1
17	8.7.0.00790	CAP 80X10	1
18	8.1.1.00326	BOLTM8X16 8,8	4
19	0.149.710.000	PLUG 3/8 GAS	1
20	0.149.1300.00	COVER	1
21	0.139.7101.00	BLANK WASHER	1
22	8.2.2.00555	Castle Nut M30X2 PR80	1
251	0.139.7000.00	BUSH	1
252	8.4.7.00146	COTTER PIN B6X60	1

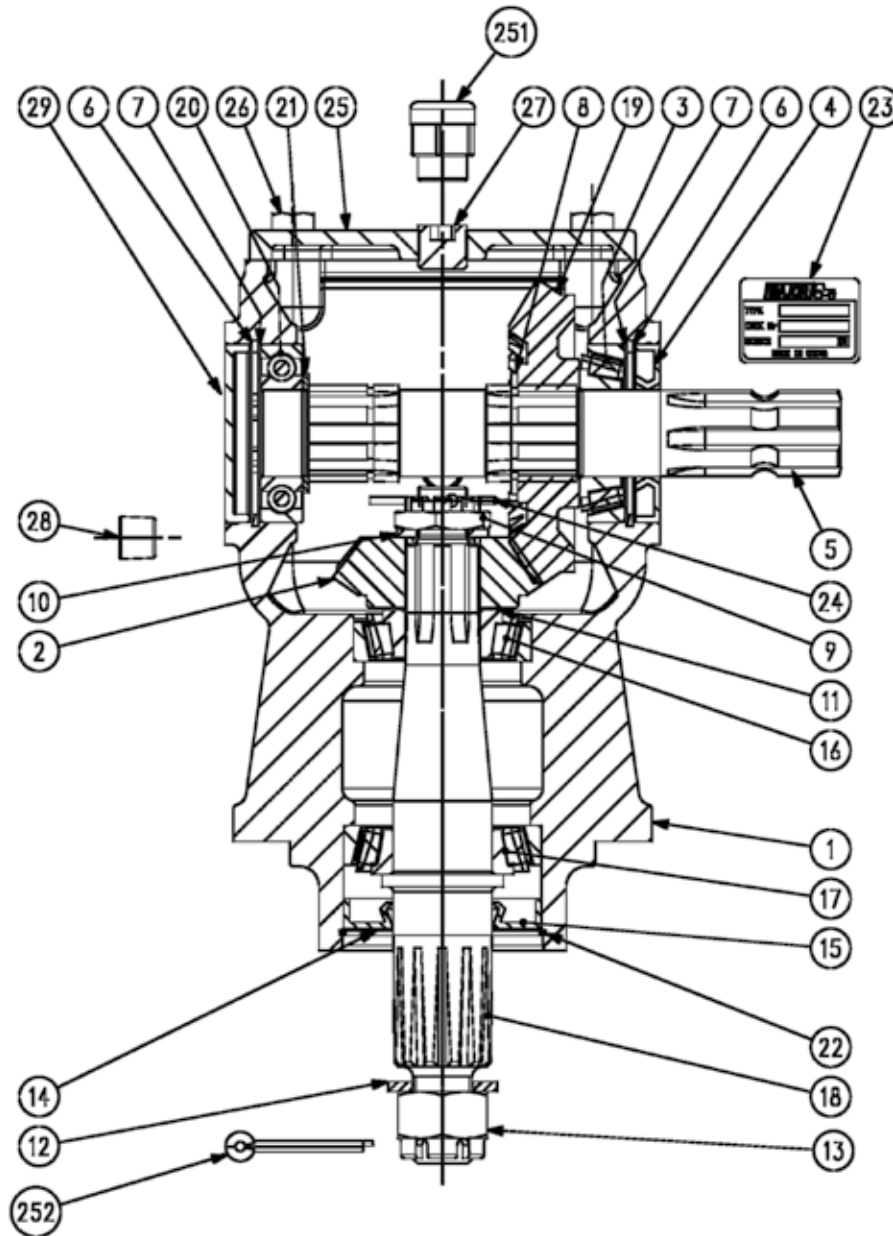
LF205 (205.871) (1.47)



Item	Part No	Description	Qty
1	LF135/17	0.131.5000.00 Crown Gear 22T Std box	1
2	LF205/12	0.135.0301.00 Gearbox Casing	1
3	LF135/18	0.135.2001.00 Input Shaft	1
4	LF135/11	0.135.6000.00 Pinion Shaft	1
5	LF135/10	0.135.7101.00 Spacer	1
6	52x7	0.135.1301.00 Oil Cap (Cover)	1
7	LF135/4	Protective Washer	1
8	LF135/21	8.0.1.00000 Bearing 6007 (35x62x14)	1
9	LF135/15	8.0.1.00870 Bearing 6207	1
10	LF135/9	8.0.1.00871 Bearing 6208	2
11	LF135/1	8.2.2.00515 Castle Nut	1
12	LF135/2	8.3.2.00409 Washer	1
13	LF135/19	8.4.1.00993 Key	1
14	M10x20SZP	8.11.00054 Bolt	1
15	LF135/6	8.5.1.00030 Snap Ring	1
16	LF135/3	8.5.3.00955 Snap Ring	1

17	85200648		Circlip	1
18	LF135/13	8.6.6.00201	Plug	2
19	40X80X12V	8.7.1.01171	Double Lip Seal	1
20	T4A/1 (8.7.3.00055)	8.7.3.01172	Double Lip Seal	1
21	LF135/26 (LF205EP)	0.141.1300.00	Cover	1
22	LF135/8	0.244.7500.00	Shim	1
23	LF135/3 (02677500)	8.5.3.00955	Snap Ring	1
24	0.6.775.000	0.6.775.000	Shim	1
25		0.2.0.571.000	Name Plate	1
26	0.248.7500.00	0.2.4.8750000	Shim	1
27	85200131	8.5.2.00131	Circlip	1

MJ40L (347.800) (1.47)



Item	Part No	Description	Qty
1	0.347.0300.00	Casting and Machining	1
2	UO.040.5004.00	Gear Pinion Z15 M5.5	1
3	8.09.00026	Roller Bearing 30207 (35x72x18.25)	1
4	8.7.3.00055	Oil Seal (35x72x10)	1
5	0.347.3002.00	Through Shaft 1"3/8 Z6	1
6	8.5.2.00131	Snap Ring (72x75x2.5 , For Holes)	2
7	0.248.7500.00	Shim Kit (60.3x71.7)	2
8	8.5.1.00680	Snap Ring (40x37.5x2.5 , For Shafts)	1
9	0.289.7102.02	Castle Nut (M20X1)	1
10	8.3.2.00531	Flat Washer (21x37x3)	1
11	0.102.7500.00	Shim Kit (30.3x44)	1
12	LF135-2	Flat Washer (25x44x4)	1
13	LF135-1	Castle Nut (M24x2)	1
14	1.135.7100.00	Protective Flat Washer (40.4x79.9x1)	1
15	8.7.1.00748	Dust Lip (40x80x12)	1
16	8.0.9.01049	Roller Bearing 30306 (30x72x20.75)	1
17	8.0.9.00024	Roller Bearing 30208 (40x80x19.75)	1
18	UO.040.3006.01	Output Shaft ASA D.P. 8/16 Z12	1
19	UO.040.6004.00	Gear Crown Z22 M5.5	1
20	8.0.1.00870	Ball Bearing 6207 (35x72x17)	1
21	0.259.7525.00	Shim (35.3x48x2.5)	1
22	8.5.3.00955	Snap Ring SB 81 (81x82.8x2)	1
23	0.205.7100.00	"Major" Name Plate	1
24	8.4.7.00823	Cotter Pin (4x40)	1
25	0.347.1300.00	Top Cover	1
26	8.11.00061	Bolt M10x25 HHB (8.8)	4
27	8.6.6.00088	1/2" Gas Solid Plug	1
28	8.6.6.00201	3/8" Gas Oil Level Plug	1
29	8.7.0.00744	Oil Cap (72x10)	1
251	8.6.7.00269	1/2" Gas Oil Breather Plug	1
252	8.4.7.00516	Cotter Pin (5x50)	1

All MAJOR machines must be registered when sold, to ensure that you receive the correct warranty cover and service bulletins. To register your machine for warranty, please go to the SALES & SUPPORT section of our website www.major-equipment.com and enter your details.

The Grass & Slurry Machinery Specialists | Agricultural - Professional Groundscare - Industrial

MAJOR

HOME PRODUCTS ABOUT NEWS FIND A DEALER SHOP SALES & SUPPORT CONTACT

How To Videos
Financing
Request a Demo
Technical Publications
Brochures
Register your Machine
Frequently Asked Questions

Register your Machine

Product Registration Form

Please register your machine to ensure you get the correct warranty cover and service bulletins. Please provide your full postal address.

Name * **Email ***

Address *

Address 1

Address 2



Get In Touch

Head Office

Major Equipment Intl Ltd

Ballyhaunis, Co. Mayo, F35 C891, Ireland

Tel: + 353 (0) 9496 30572

info@major-equipment.com

UK Office

Major Equipment Ltd

Major Ind. Estate, Heysham, Lancs, LA3 3JJ, UK

Tel: + 44 (0) 1524 850501

ukinfo@major-equipment.com

Netherlands Office

Major Equipment Intl Ltd (EU)

Postbus 29, NL-7700 AA Dedemsvaart, Nederland

Tel: + 31 (0) 6389 19585

euinfo@major-equipment.com

@MAJOREQUIPMENT



www.major-equipment.com