

# Operator Manual & Parts List

**MAJOR**  
**SAW TABLE**



**Head Office**

Major Equipment Intl. Ltd.  
Ballyhaunis,  
Co. Mayo,  
Ireland.

Tel.: +353 (0) 9496 30572  
Fax: +353 (0) 9496 30788  
Email: info@major-equipment.com

**UK Office**

Major Equipment Ltd.  
Major Industrial Estate,  
Middleton Rd.,  
Heysham,  
Lancs.  
LA3 3JJ

Tel.: +44 (0) 1524 850 501  
Fax: +44 (0) 1524 850 502  
Email: ukinfo@major-equipment.com

**NETHERLANDS & GERMANY OFFICE**

Major Equipment Intl. Ltd.  
Postbus 29,  
NL-7700 AA ,  
Dedemsvaart,  
Nederland.

Tel: +31 (0) 6389 19585  
Email: euinfo@major-equipment.com

Web: www.major-equipment.com



Find us on FACEBOOK  
MAJOR MACHINERY



View our channel  
MAJOREQUIPMENT

**Disclaimer**

While every effort has been made in the production of this manual to ensure that the information contained herein is full and correct, Major assumes no responsibility for errors or omissions.

Major reserves the right to modify the machinery and the technical data contained within the manual without prior notice.

Further to this, Major assumes no liability for any damages which may result from the use of the information contained within this manual.

# Contents

## Introduction

Thank you	1
Using Your Operator's Manual	1
Safety Issues	1

## Product Identification

Machine Serial Numbers	1
Product Description	1
Register Your Product and Warranty Online	2

## Safety

Machine Safety Labels	2
Operating Safely	3

## Operating the Machine

Inspections before Use	5
Installation, Transport and Transfer	5
Key to Main Parts	6
Starting Regulations	6

## Maintenance

Cleaning the Saw Table	8
Dismantling and Blade Replacement	8
Belt Tension and Replacement	9
Storage when not in Use	9
Dismantling the Saw	9

## Spare Parts

Saw Table Body	10
Saw Table Overview	11
Transmission	12

## **EEC certificate of conformity for machines**

(conforming to Directive 98/37/EEC)

Company: Major Equipment Ltd.  
Address: Coolnaha,  
Ballyhaunis,  
Co. Mayo,  
Ireland.  
Tel. +353949630572  
Fax +353949630788

*declares in sole responsibility that the product:*

### **SAW TABLE**

When properly installed, maintained and used only for it's intended purpose, complies with all the essential Health & Safety requirements of:

- EN 292-1/1992 (SAFETY OF MACHINERY - Fundamental concepts: general design principles - Terminology, basic methodology)
- EN 292-2/1992 (SAFETY OF MACHINERY - Fundamental concepts: general design principles - Specifications and technical principles)
- EN 294/1992 (SAFETY OF MACHINERY - Safety distances to prevent contact of upper limbs with dangerous areas)
- EN 349/1993 (SAFETY OF MACHINERY - Minimum distances to prevent crushing parts of the human body)
- EN 414/1993 (SAFETY OF MACHINERY - Design and presentation rules - safety prescriptions)
- EN 418/1993 (SAFETY OF MACHINERY - Emergency stop device)
- EN 954-1/1996 (SAFETY OF MACHINERY - Safety control systems categories - Part 1: General design principles)
- EN 1050/1996 (SAFETY OF MACHINERY - risk assessment principles)
- EN ISO 3746/1996 (ACOUSTICS - Determination of sound power levels of noise sources using sound pressure - Survey method using an enveloping measurement surface over a reflecting plane)
- EN 1870-6/2002 Safety of woodworking machines - Circular sawing machines- Part 1: Circular sawing machines (with and without sliding plane) and saw dimensions

I certify on behalf of Major Equipment Int. Ltd., that this machine when properly installed and operated correctly, complies with all the essential Health & Safety requirements of all legislation referred to above.

Signature :   
Managing Director

Date 12/01/2012

# Introduction

## Thank you

We appreciate having you as a customer and wish you many years of safe and satisfied use of your machine.

## Using Your Operator's Manual

This manual is an important part of your machine and should remain with the machine when you buy it. Reading your operator's manual will help you and others avoid personal injury or damage to the machine. Information given in this manual will provide the operator with the safest and most effective use of the machine.

Sections in your operator's manual are placed in a specific order to help you understand all the safety messages so you can operate this machine safely. You can also use this manual to answer any specific operating or servicing questions. The present manual provides installation, operating and maintenance instructions for the SAT OSCILLATING SAW TABLE (with crown wheel and pinion). This saw /s designed to cut branches with a maximum diameter of 200mm. THE PRESENT MANUAL IS AN INTEGRAL PART OF THE PRODUCT AND MUST BY SUITABLY SAFEGUARDED IN ORDER TO PROTECT ITS INTEGRITY AND ALLOW REPEATED CONSULTATION DURING THE ENTIRE LIFESPAN OF THE SAW TABLE. It is essential that the information provided in the present manual is observed: MAJOR do not accept responsibility due to negligence or failure to observe such instructions. The CIRCULAR SAW TABLE is designed in compliance with the provisions of Directive 98/37/EEC. Therefore, the product bears the EEC mark and is accompanied by the prescribed EEC declaration of conformity.

## Safety Issues

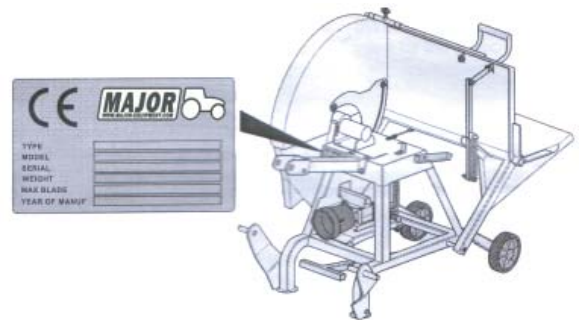
Your manual contains special messages to bring attention to potential safety concerns, machine damage as well as helpful operating and servicing information. Please read all the information carefully to avoid injury and machine damage.

# Product Identification

## Machine Serial Numbers

Each saw table is fitted with an identification tag (Fig. 2) indicating:

- Manufacturer's trademark
- Name and address of manufacturer
- Machine type
- Machine model
- Machine serial number
- Weight in Kg
- Max blade Ø
- Year of manufacture
- EEC mark



The manufacturer's details indicated on the tag must always be provided when requesting assistance and/or spare parts provisions.

## Product Description

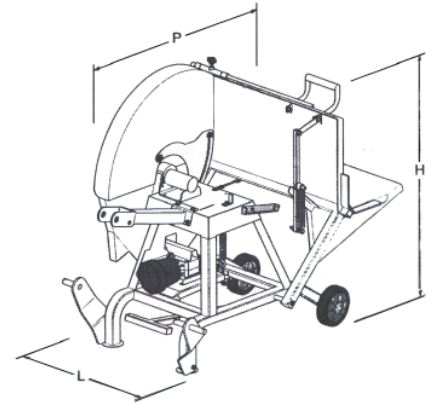
The machine, mounted on a solid frame in a stable position, consists of the following parts:

- A circular saw inserted in the oscillating platform and secured to the frame
- A blade support and rotation device fitted onto the frame
- A mobile blade protection cover used during operation
- A series of protective covers for moving parts on the machine frame
- A support platform
- Mechanical and electrics safety devices

## Product Specifications

MODEL	L (mm)	P (mm)	H (mm)	WEIGHT (kg)	BLADE DIM (mm)
SAT	80	90	105	140	600

- REQUIRED POWER: 22 - 60 Kwp
- MAX. REV.: 400 rev/min
- BLADE DIAMETER: 600 mm
- BLADE THICKNESS: 2,8 - 4,4 mm
- MAX. CUT HEIGHT: 200 mm
- ACOUSTIC PRESSURE LEVEL AT OPERATOR STATION: Average according to EN ISO 3746/1996 (LpAm): 89.2 dB (A)
- ACOUSTIC POWER LEVEL: According to EN ISO 3746 1996 (LpAm): 104.5dB(A)
- PEAK NOISE: According to EN ISO 3745/1996 (LpAm): 88.7 dB (C)



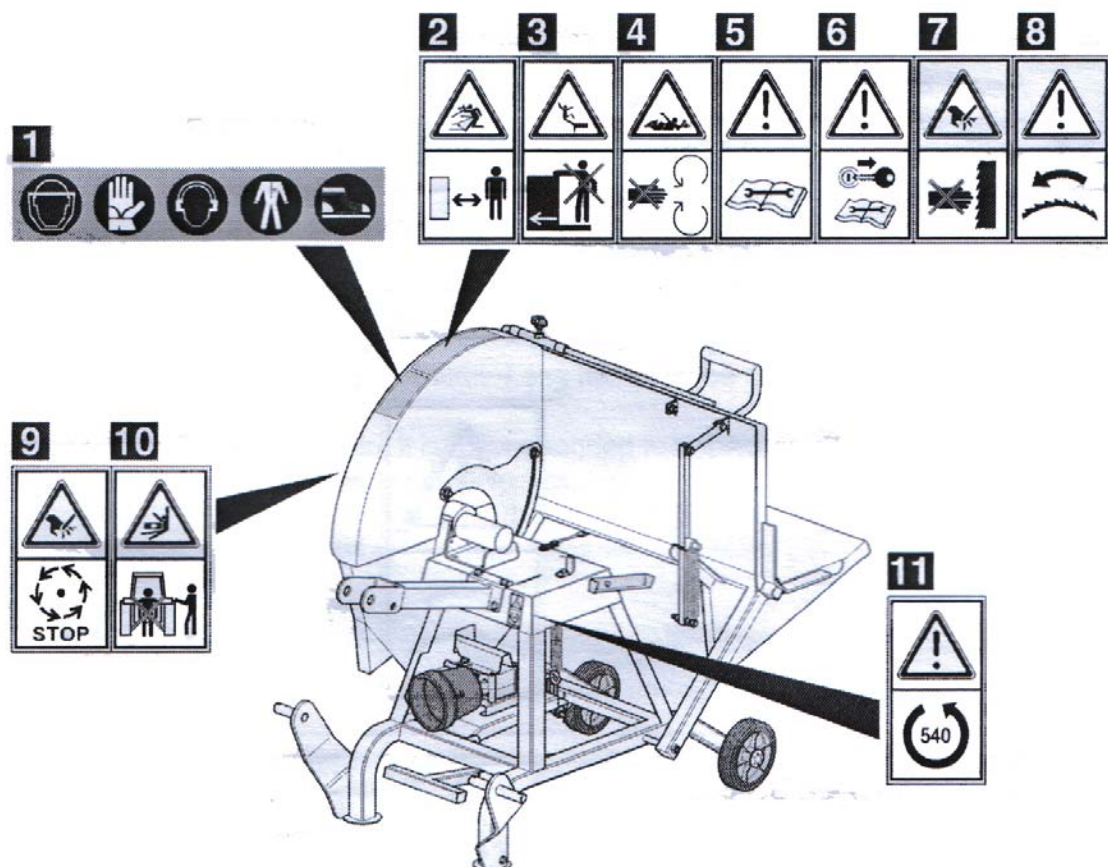
## Register Your Product and Warranty Online

To register your product through the Internet, simply go to the Support section on [www.major-equipment.com](http://www.major-equipment.com). Completing the information, either online or with the product warranty card, will ensure the customer that their product receives all post sales service and important product information.

# Safety

## Machine Safety Labels

The saw table is fitted with pictograms (tags) warning of possible risks existing around the machine. Figure 5 indicates the tags and the exact position in which these are normally placed by the manufacturer. The meaning of the pictogram symbols are provided below, together with the identifying number



- Label 1: Danger: Personal protective devices must be worn. Face, hands and eyes must be protected from shavings made by the blade during cutting and hearing must be protected by means of ear muffs.
- Label 2: Danger of projecting objects: A safe distance must be maintained.
- Label 3: Danger of falling. Do not climb or ride on machine.
- Label 4: Danger of entanglement. Do not place hands near moving parts.
- Label 5: Read manual before performing any intervention on the machine.
- Label 6: Before performing interventions on the machine, stop the tractor and remove the ignition key
- Label 7: Danger of cutting hands
- Label 8: Caution: Direction of blade rotation.
- Label 9: Ensure that blade has completely stopped before approaching
- Label 10: Do not remain between the machine and the tractor.
- Label 11: Verify the revolutions and direction of rotation of the p.d.p. of the tractor before turning on the power transmission.

## Operating Safely

The saw table is fitted with mechanical and electrical safety devices for the protection of the operator.

**NOTE!** It is absolutely essential that the following devices are never tampered with or excluded, and that they are always maintained in an excellent working condition in order to guarantee safety.

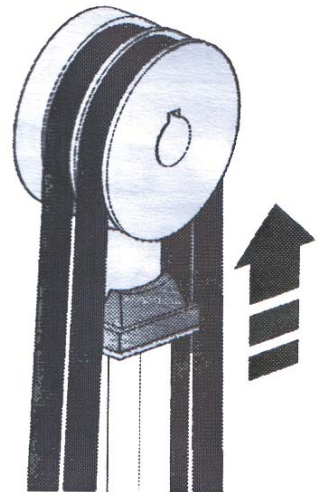
### MECHANICAL SAFETY:

**FRAME COVER:** Prevents the operator's hands from being inserted into the lateral area below the table where pulleys and blade rotate.

**BLADE PROTECTION COVER:** Prevents the operator's hands from coming into contact with the rotating blade when no cutting is taking place.

**BLADE BLOCKING DEVICE:** As emergency measure it is possible to stop the blade by pressing on the brake pedal connected to a sliding block which acts on the driven pulley (Fig. 3)

FIG. 3



In designing the machine the manufacturer has complied with obligations specified by Directives 89/336/EEC (electromagnetic Compatibility <sup>TM</sup>) and 98/37/EEC (machine safety), verifying Compatibilit<sup>TM</sup> through the following technical regulations and prescriptions:

- EN 292-1/1992 (SAFETY OF MACHINERY - Fundamental concepts: general design principles - Terminology, basic methodology)
- EN 292-2/1992 (SAFETY OF MACHINERY - Fundamental concepts: general design principles - Specifications and technical principles)
- EN 294/1992 (SAFETY OF MACHINERY - Safety distances to prevent contact of upper limbs with dangerous areas)
- EN 349/1993 (SAFETY OF MACHINERY - Minimum distances to prevent crushing parts of the human body)
- EN 414/1993 (SAFETY OF MACHINERY - Design and presentation rules - safety prescriptions)
- EN 418/1993 (SAFETY OF MACHINERY - Emergency stop device)
- EN 954-1/1996 (SAFETY OF MACHINERY - Safety control systems categories - Part 1: General design principles)
- EN 1050/1996 (SAFETY OF MACHINERY - risk assessment principles)
- EN ISO 3746/1996 (ACOUSTICS - Determination of sound power levels of noise sources using sound pressure - Survey method using an enveloping measurement surface over a reflecting plane)
- EN 1870-6/2002 Safety of woodworking machines - Circular sawing machines- Part 1: Circular sawing machines (with and without sliding plane) and saw dimensions

Note the danger symbol where indicated in this manual and observe the safety prescriptions. Read carefully the following specifications. Any person failing to do so may suffer irreparable damages or may cause damages to persons, animals or objects.

MAJOR does not accept any responsibility for damages caused by the failure to observe the safety and accident prevention instructions provided below.

Furthermore, MAJOR does not accept responsibility for damages caused as a result of inappropriate use of the SAW TABLE and/or following modifications performed without authorisation of the manufacturer.

•

## General Safety Information

- Always maintain a safe and correctly balanced position in relation to the operating machine.
  - Clothing worn by the operator must be as appropriate as possible; that is, not too loose, with no hanging parts which may become entangled. Sleeves must have an elastic. No belts, rings or chains may be worn. Always wear strong, safety footwear. Long hair must be secured back with an appropriate cap.
  - Do not expose the machine to rain. It is recommended to position it in locations which are always protected in order to avoid exposure to the elements.
  - Do not use the machine in humid or wet environments.
  - Position the machine in a well-lit place
  - The floor must be clean, dry and free of oil or grease stains
  - An untidy work station constitutes a fire hazard (keep the working area tidy).
  - This machine has been designed according to the current accident prevention regulations. Repairs must be performed exclusively by qualified personnel, using original spare parts. Failure to do so may result in damages to the user.
  - The saw table must be disconnected from the tractor before commencing any maintenance operation.
  - Do not introduce foreign bodies inside the protective cover and do not tamper with the safety devices.
  - **DANGER!** Wear gloves, face mask and cap before proceeding with operations. Face, hands and eyes must be protected from shavings made by the blade during cutting and hearing must be protected by means of ear muffs.
- 
- The power of the machine must never exceed the maximum power indicated in Section 1.5 "TECHNICAL DATA".
  - The use of a PTO joint fitted with a clutch is recommended.
  - Regularly check PTO joint protections.
  - Periodically lubricate joint crosses, telescopic tubes and protective PTO joint bushes with universal grease.
  - Use only PTO joints with adequate cross-sections.
  - Always ensure that the PTO shaft is correctly installed and secured.
  - When using the SAT saw table, always ensure that the anti-rotation chains of the PTO joint protection are connected.
  - Before activating the power takeoff, verify that no one is in the working area of the machine or within the danger zone.
  - See Section 5.1 "FUNCTIONING" for further information on the PTO shaft.

## PTO Safety

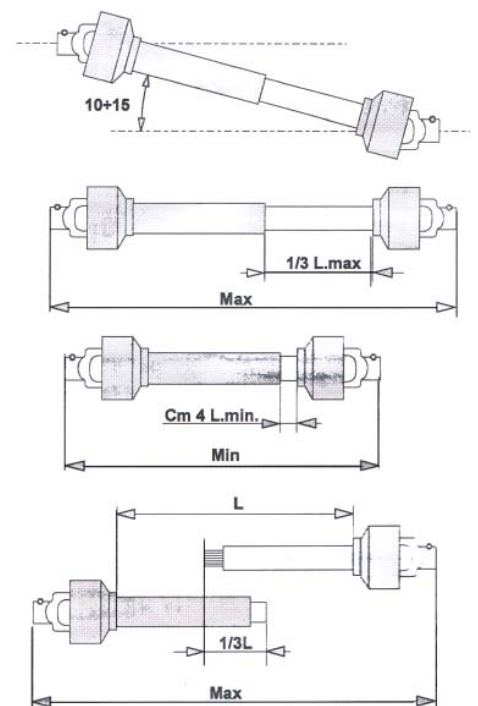
### CAUTION:

The manufacturer of the PTO shaft recommends that it should not be modified. Since the PTO shaft rotates at a constant speed, it is subject to balancing during test procedures and any modifications may cause discrepancies which would impact on the functioning of the saw table, as well as on the integrity of the PTO shaft itself. When the PTO shaft is extended to the maximum in any working condition, the telescopic tubes must overlap by at least 1/3 of their length as seen in Figure 13. When it is inserted to the maximum, the minimum play must be 4 cm. If this is not possible, contact the Technical Service of the manufacturer. Before commencing operation, verify that the protections are fitted with the appropriate safety chains in order to avoid that the protections rotate together with the PTO shaft, and ensure that these chains are in excellent condition.

Furthermore, check that the PTO shaft is suitable to transmit the power required by the saw table. If in doubt, contact the manufacturer.

### CAUTION:

Before connecting the power takeoff ensure that the speed of rotation corresponds with the speed provided for by the saw table (540 rev/min).



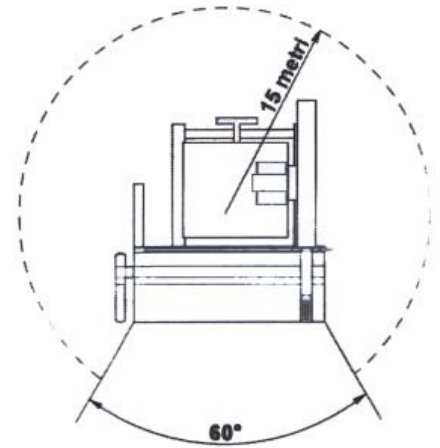


# Operating the Machine

## Inspections before Use

The saw table must not be used to cut materials or objects mixed with wood, such as, plastic objects, metal containers, glass, etc. Observe the laws enforced in the country in which the machine is installed, relating to the use and disposal of products used in cleaning and maintenance of the saw table in accordance with the recommendations of the manufacturer of such products (see a/s/o Section 6.3 "DISMANTLING OF THE SAW TABLE").

- It is absolutely prohibited to activate or allow to activate the saw table by anyone who has not completely read, understood and perfectly assimilated the information provided in the present manual.
- It is absolutely prohibited to activate or allow to activate the machine by inadequately trained and qualified personnel or personnel in poor health.
- It is absolutely prohibited to touch the moving parts during operation.
- The saw table is designed exclusively to cut any type of wood with a maximum diameter of 200 mm. Any other use of the machine is considered to be inappropriate and, therefore, strictly forbidden.
- NEVER cut two branches simultaneously (even with a smaller diameter); such an action may cause serious damage to the user.
- Tampering with, removing, damaging or excluding any element of the machine is prohibited.
- One of our service centres must be contacted should the machine jam during operation or should any component break.
- Before operating the saw table, the operator must always verify that no persons and/or animals are within 15 metres of the machine, as shown in Figure 6.
- If the machine is installed in a closed area, consideration to its size and the size of the pieces to be worked on is recommended. The installation area must be well-lit and sufficiently aerated to allow exhaust fumes of the tractor to disperse in the air.
- The floor must be uniform and level so as to guarantee a stable positioning for the machine.
- The operating area of the machine can be open but must be protected from the elements.
- The saw table must be well-secured to the tractor at all points. The tractor must remain stationary with the hand-brake well engaged.



## Installation, Transport and Transfer

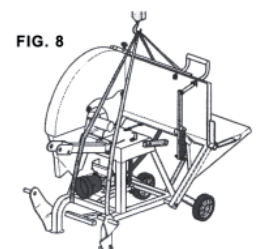
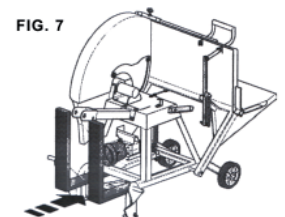
The saw table must be transported by means of an appropriate vehicle and by qualified personnel. It is essential to avoid that any damage to the machine components. Before transporting the machine, ensure that the capacity of the equipment used is suitable for the weight and dimensions of the machine. If cables or ropes are used to lift the machine, verify their capacity and that they are in excellent condition.

The machine can be transported by means of a fork lift. Position the forks under the frame as illustrated in Figure 7 and load the machine carefully so as to avoid problems during transport. Take the same precautions during unloading.

If a crane or other lifting system is available, firmly and safely secure the machine frame with cables or belts as indicated in Figure 8. During transportation, operators must wear gloves and protective shoes and must never position themselves under the load.

Transfer of the saw table must be performed manually, using the wheels and disengaging the appropriate steering handle (C) (Figure 9). Block the steering.

**DANGER!** The connection of the saw table to the cardan shaft is a very dangerous stage. Ensure that the entire operation is performed with utmost care, with strict observance of the instructions.



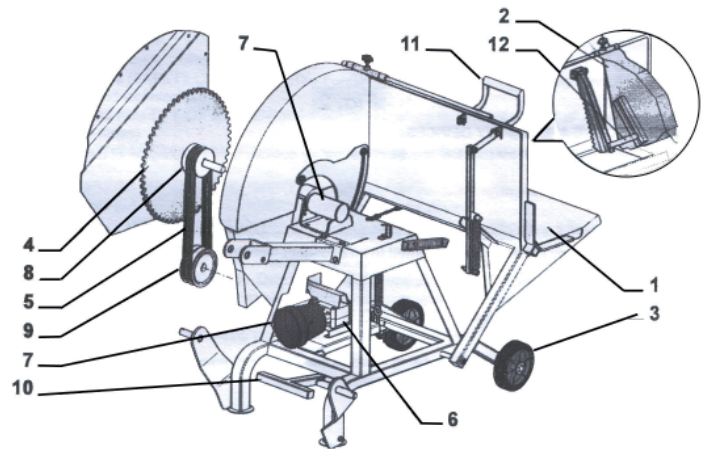
Before commencing operation of the saw table it is essential that the instructions provided below are read and perfectly understood.

**NOTE!** Read the information provided in section “GENERAL SAFETY AND ACCIDENT-PREVENTION PRESCRIPTIONS”

At first start-up of the machine, it is important to verify that the direction of rotation of the blade corresponds with the direction indicated in Figure 10.

## Key to Main Parts

1. Branch support cradle with blade protection cover
2. Mobile blade protection cover
3. Wheels for transporting
4. Widia circular blade
5. Belts
6. Transmission box
7. Blade support
8. Driven pulley
9. Driving pulley
10. Steering handle
11. Operating lever and working platform locking device
12. Branch grip



## Starting Regulations

Before activating the saw table, carefully check the operation and perfect functioning of the safety devices and any damaged parts. Check the functioning of moving parts and ensure that these are not blocked. Check that there are no damaged elements and that all the components are assembled and function correctly. Damaged safety devices or parts must be repaired or replaced effectively at one of our service centres by specialised personnel.

Each day before commencing work:

- Ensure that all fixed protective covers are present and secured;
- Ensure that the circular blade protection covers are correctly assembled;
- Check the driving belt tension (see also Section 4.2 “BELT TENSION AND REPLACEMENT”).

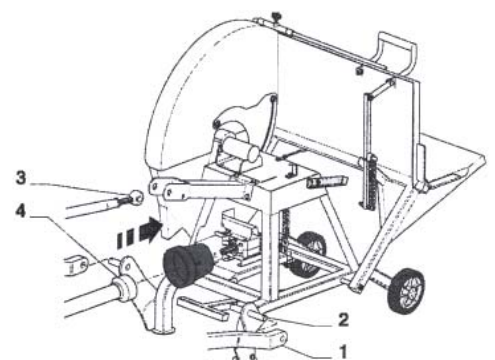
**IMPORTANT:** After having disconnected the power takeoff on the tractor, ensure that the blade is immobile before performing any operation.

Operation can commence after having performed all preliminary preparatory and checking operations on the saw table.

**DANGER!** Using the saw table is a dangerous activity. Ensure that the instructions are observed during the entire operation. Constantly check that persons, animals or objects are not present within the danger zone.

**NOTE!** The following operations must be performed while the tractor power takeoff is disconnected, the engine switched off and the ignition keys removed from the control panel.

- With the saw table positioned on level ground, bring the lifting arms (1, Figure 12) of the tractor to the same height as the relative attachments (2) on the machine.
- Push and insert the lifting arms onto the appropriate pins and insert the relative safety pins.
- Attach the 3rd tractor point (3) to the appropriate upper connection of the saw table insert the pin and block it with the safety pin.
- Verify the connection of the lifting arms so as to avoid dangerous swinging and guarantee machine stability.
- Connect the tractor power takeoff with that of the saw table using a suitable cardan shaft (4) fitted with protections (see relevant paragraph below).



The machine can be stopped in two ways:

1. By stopping the rotation of the cardan transmission directly from the control panel on the tractor
2. By using the emergency pedal described in Section 1.4 - MECHANICAL SAFETY.

It must be remembered that the blade continues to turn for a few seconds after the tractor power takeoff has been disconnected. The angle at which the cardan shift functions must be the minimum possible (10°); this favours the life of the shaft and of the saw table.

After connection to the tractor, it is recommended that a trial run of the functioning of the machine be performed.

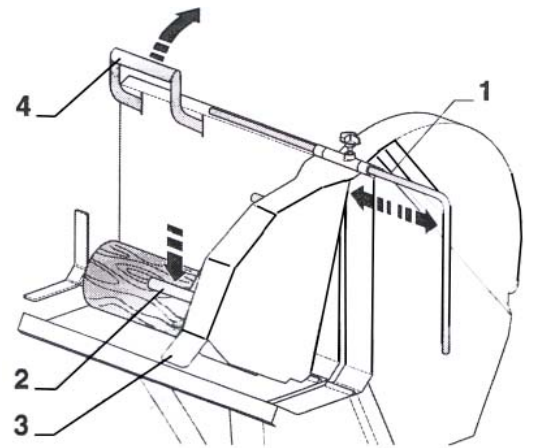
- Activate the tractor;
- Activate the clutch of the power takeoff of the tractor, positioning the selector on 540 rev/min;
- Slowly release the clutch at low engine revolutions.

**CAUTION** In order to avoid serious damage to the machine; do not release the clutch abruptly. The number of engine revolutions can be increased only when the machine is in operation.

It is recommended that the first cuts be performed on a branch with minimum diameter in order to evaluate the functioning of the machine and its actual cutting capacity.

Work on the saw table by proceeding as follows:

- Set the length of the wood pieces required by adjusting the measurement rod (1, Figure 14).
- Lift branch grip (2) with the mobile blade cover (3) and position the branch on the table.
- Lower branch grip (2) onto the branch;
- Slowly and carefully push the lever (4) and the branch grip forwards until the branch is completely cut;
- Slowly return the working platform to the initial position;
- Lift branch grip (2) and move the branch for a new cut.



N.B.: Hold handles (2) and (4) with both hands and push forwards. This is the only way in which the platform will be released from the safety block.

**NOTE!**

It is essential that the cover is not lifted while the working platform is pushed forwards, since the blade will not be protected and will be extremely dangerous.

# Maintenance

Ordinary maintenance operations are listed below. Extraordinary maintenance operations (parts or units repairs) can be performed only by specialised personnel and/or personnel authorised by the manufacturer.

## NOTE!

- Before performing any maintenance or repairs on the saw table, it is necessary to isolate the machine from the mechanical power source by proceeding as follows:
- Stop cardan transmission rotation, switch tractor engine off and disconnect the ignition key from the instrument panel;
- Disconnect the cardan shaft from the tractor power takeoff;
- Disconnect the machine from its mechanical connection to the tractor;
- Remove the tractor from the machine so as to leave space all around the perimeter of the machine.

NOTE Intervention times provided are only for information and vary on the basis of normal working conditions. Conditions may vary depending on the type of service, the more or less dusty environment and the frequency of use. In the case of harsher conditions, maintenance operations must be increased accordingly.

NOTE Always keep cleaning products out of reach of children. Always read carefully the warnings and precautions indicated on the containers. Avoid contact of such products with skin; always use gloves and wash hands after each operation.

DANGER After each maintenance operation requiring the removal of a safety device, always re-install such devices before re-commencing operation. Maintenance operations must always be performed while the tractor power takeoff is disconnected, the engine switched off and the ignition keys removed from the control panel in order to avoid unnecessary risks.

After each use: Clean the saw table of any debris, observing the procedures indicated in Section 6.1 "CLEANING THE SAW TABLE". Every 10 hours of operation:

- Check screws and bolts.
- Check the condition of the blade and if worn or damaged, sharpen or have replaced by authorized personnel only.
- Check the belt tension as indicated in Section 4.2 -BELT TENSION AND REPLACEMENT".

## Cleaning the Saw Table

It is recommended that every time the saw table is used, it be cleaned externally, in particular, the working platform, by means of an air jet and cloths, paying attention to the parts where wood splinters and dust may deposit. It is advisable not to allow wood dust to accumulate since it can be inflammable. Do not use solvents and inflammable materials.

NOTE! Never clean the working platform by hand when the machine is operating.

NOTE! Always wear gloves to clean the saw table so as to avoid unnecessary cuts by coming into contact with sharp components.

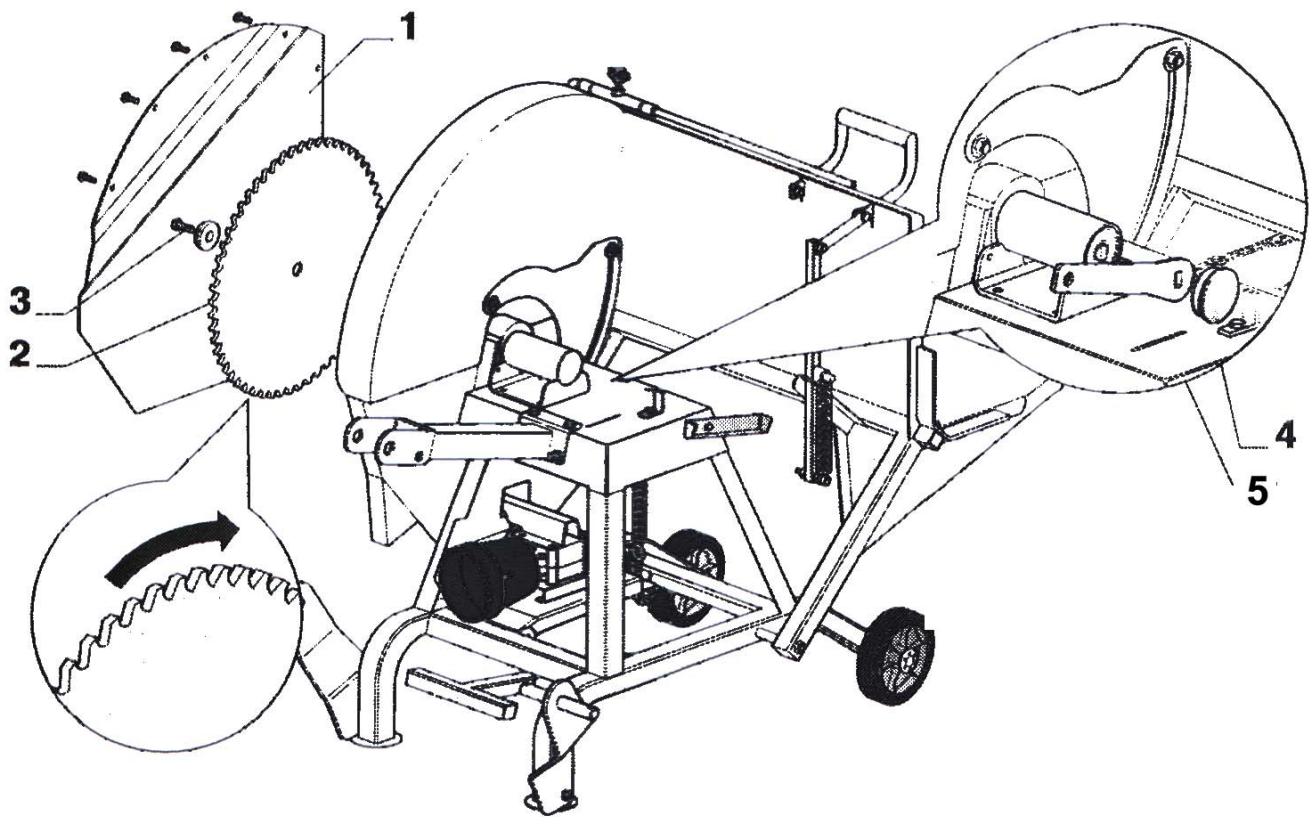
## Dismantling and Blade Replacement

DANGER! These operations must be performed exclusively by authorised personnel and always wearing a pair of strong gloves.

DANGER! Before any operation requiring adjustment or replacement of mechanical parts, disconnect the cardan shaft from the tractor and ensure that the blade is immobile.

To loosen the tool in order to change the blade, proceed as follows: (see Figure 10);

- Unscrew the fastening screw and remove the blade protection cover (1)
- Place a piece of wood between the frame and a blade tooth (2) to avoid rotation; use a suitable key on the screw (3), unscrewing in the direction opposite to the rotation of the blade (use a rubber mallet if necessary);
- Remove the cap (4) of the blade support and, using the key (5), apply it to the shaft.
- Proceed with blade replacement;
- When it is not on the machine, the blade **MUST** be kept in an appropriate protective device;
- Mount the blade, proceeding with operations inverse to dismantling procedures, screwing tightly the locking screw.
- Ensure that the protective cover is secured correctly in its seat, carefully tightening all the screws;
- When mounting the blade, ensure that it has been positioned as indicated in Figure 10, so that the teeth follow the direction of the arrow.

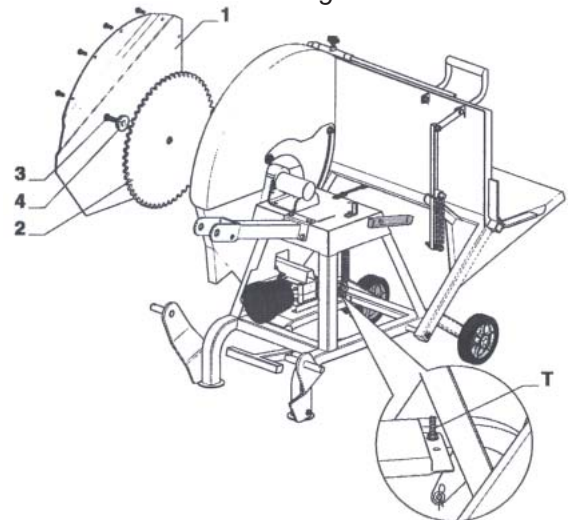


## Belt Tension and Replacement

Check regularly the tension of the belts and adjust if necessary by action on the nut of tension rod T (figure 11). Replace the belts where necessary by proceeding as follows:

- Loosen the nuts of tension rod T in order to reduce the tension on the belts;
- Remove blade protection cover 1 (Figure 11);
- Loosen screws 3, removing blade 2 and recovering locking flange 4;
- Remove and replace the belts;
- Re-assemble all of the above performing operations opposite to the dismantling process

Fig. 11



## Storage when not in Use

At the end of the season or if a long pause is foreseen, the following is recommended:  
 Proceed according to the procedures indicated in Section 6.1 'CLEANING THE SAW TABLE'.  
 Check the machine and replace damaged parts if necessary;  
 Tighten completely screws and bolts;  
 Apply a little lubricant to the non-painted parts;  
 Store the machine in a dry environment and out of reach of third parties so as to avoid incorrect use.  
 Protect the entire machine with a sheet.

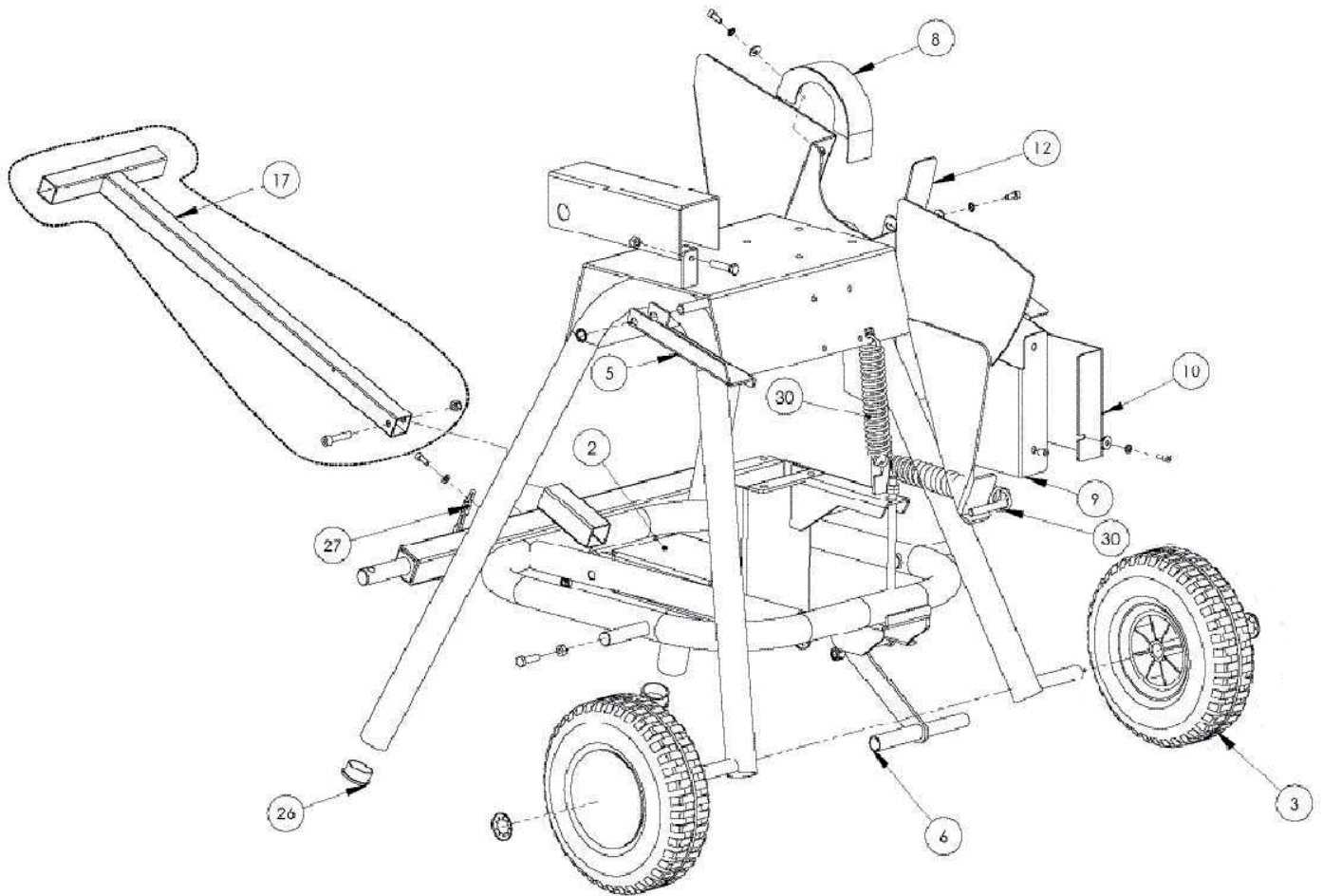
## Dismantling the Saw

At the end of the working life of the machine or of any worn component, proceed to dismantle and scrap and contact Specialised Centres accordingly

NOTE! Leaving abandoned in its complete state the machine or any of its components is prohibited, as some components may present a hazard or, in the case of lubricants or paints, may pollute the environment. During disassembly the plastic parts must be separated and sent to the specific differentiated collection points in accordance with regulations in force. In the case of metal parts, steel parts must be separated from those composed of other metals or alloys so as to ensure correct dispatch for fusion recycling

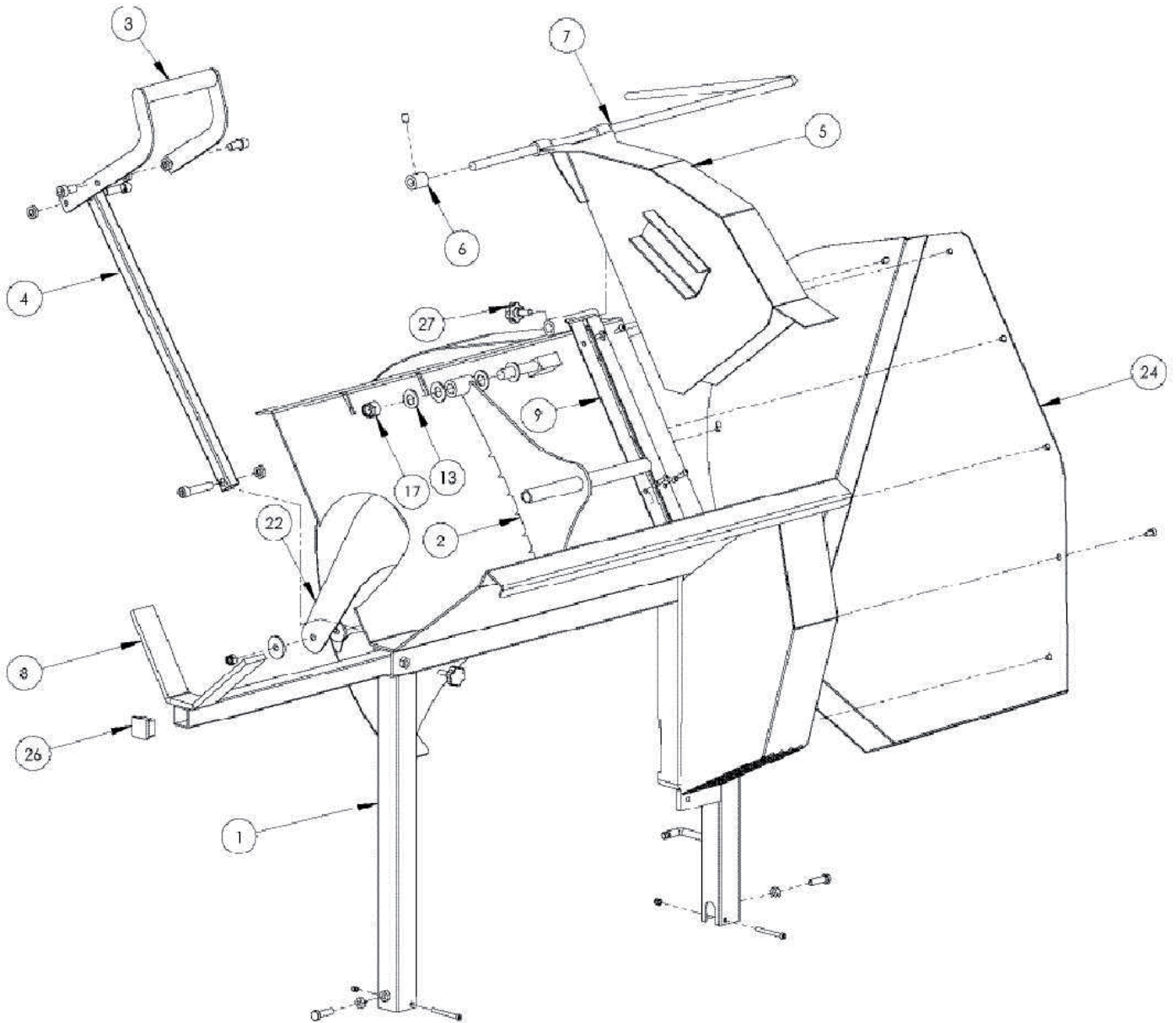
# Spare Parts

## Saw Table Body



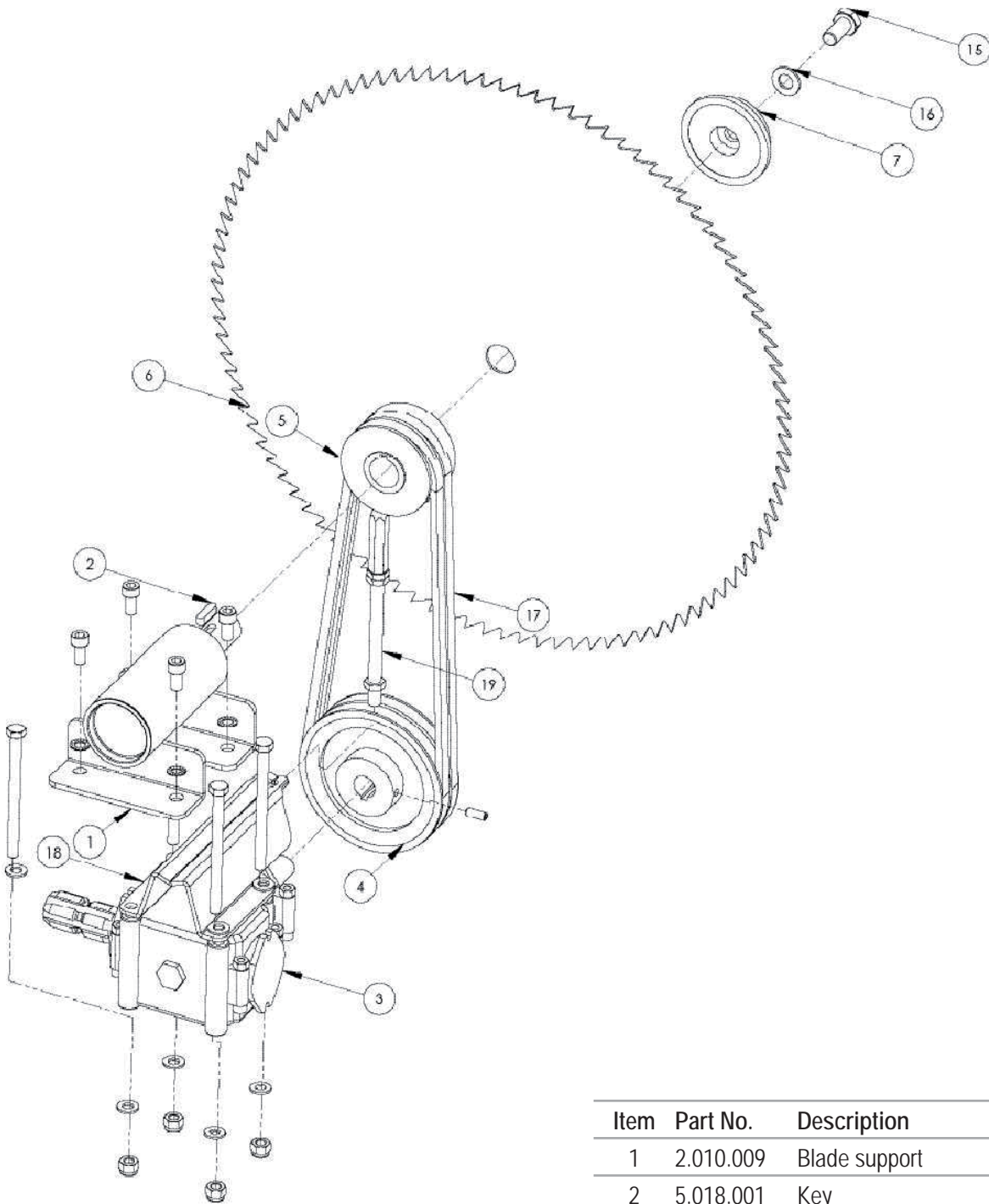
Item	Part No.	Description
2	2.010.008	Oscillating table frame assembly
3	2.008.027	Wheel
5	3.003.042	Oscillating safety device
6	2.010.015	Disconnecting pedal
8	2.010.012	Support protection
9	3.003.048	Inside bottom cover
10	3.003.050	Outside bottom cover
12	3.003.049	Top inside cover
17	2.010.013	Steering handle assembly
26	5.034.007	Blanking cap
27	5.034.008	Locking pin with chain
30	5.025.003	Spring

## Saw Table Overview



Item	Part No.	Description
1	2.010.004	Working platform assembly
2	2.010.006	Branch grip
3	2.010.010	Handle
4	3.003.046	Safety tube
5	2.010.003	Blade protection cover
6	3.011.002	Bushing
7	3.025.004	Measuring rod
8	2.010.014	Branch support extension
9	3.003.045	Blade guide
13	4.023.001	Washer
17	4.037.003	Nut
22	3.003.044	Blade protection sliding cover
24	3.003.043	External Blade cover
26	5.034.006	Blanking cap
27	5.017.003.	Locking screw

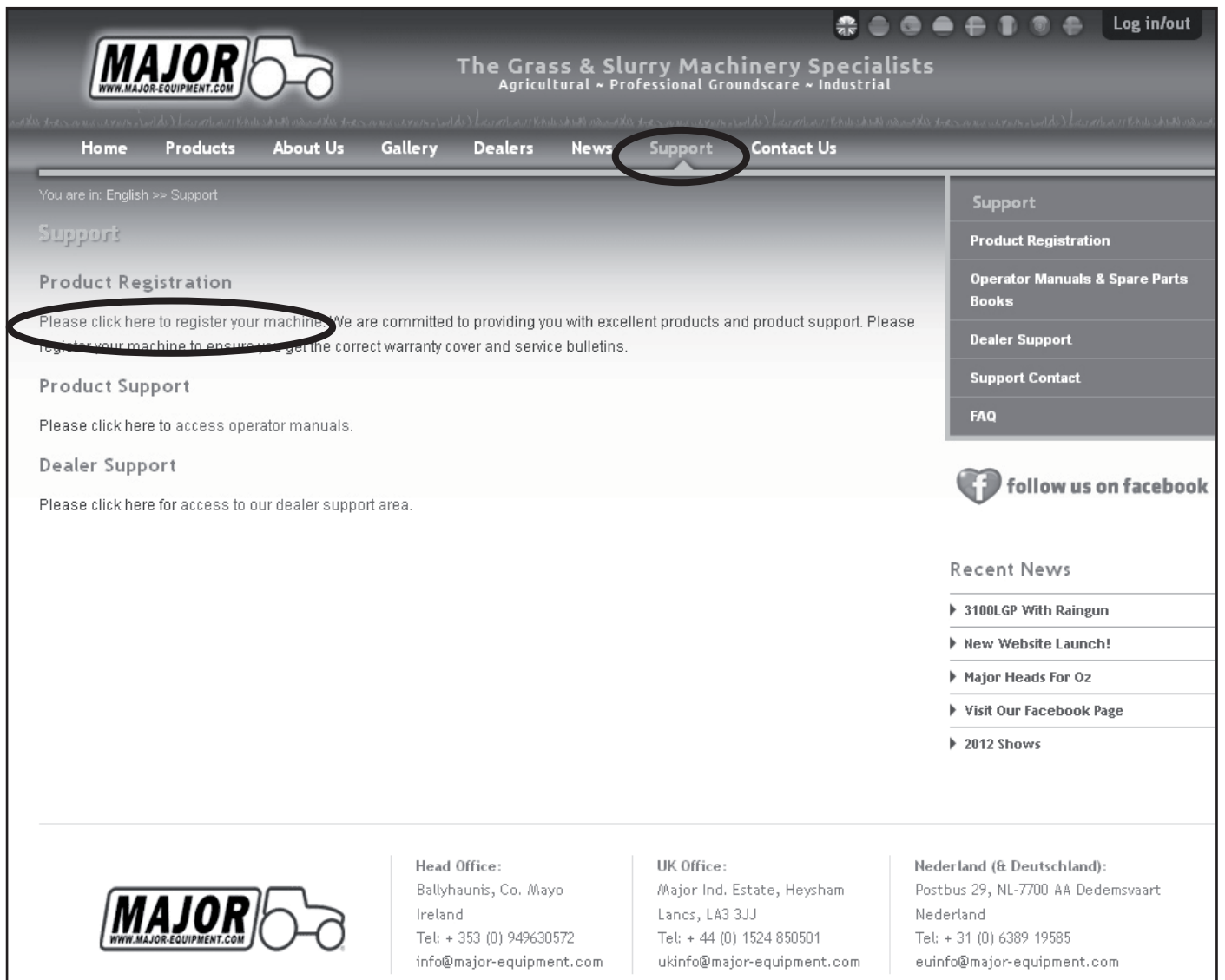
## Transmission



Item	Part No.	Description
1	2.010.009	Blade support
2	5.018.001	Key
3	5.001.001	Transmission box
4	3.022.003	Bottom pulley
5	3.022.002	Upper pulley
6	5.024.006	Circular blade
7	3.018.002	Blade locking flange
15	4.004.006	Blade locking screw
16	4.020.011	Blade locking washer
17	5.013.002	Belts x2
18	3.003.051	Brake support
19	2.010.017	Adjusting rod



Warranty: This machine is guaranteed for 12 months. No warranty is given where the machine is being used as a hire machine. Warranty is against faulty workmanship or parts, with the exception of components not of MAJOR'S manufacture or design, i.e. hydraulic components, universally jointed shafts, chains and tyres, etc., which are subject to the original manufacturers conditions. To register your machine for warranty, please go to the support section of our website [www.major-equipment.com](http://www.major-equipment.com) and enter your details.



**MAJOR**  
WWW.MAJOR-EQUIPMENT.COM

The Grass & Slurry Machinery Specialists  
Agricultural ~ Professional Groundscare ~ Industrial

Home Products About Us Gallery Dealers News **Support** Contact Us

You are in: English >> Support

## Support

### Product Registration

Please click here to register your machines. We are committed to providing you with excellent products and product support. Please register your machine to ensure you get the correct warranty cover and service bulletins.

### Product Support


Please click here to access operator manuals.

### Dealer Support

Please click here for access to our dealer support area.

**Support**

- Product Registration
- Operator Manuals & Spare Parts Books
- Dealer Support
- Support Contact
- FAQ

 follow us on facebook

### Recent News

- ▶ 3100LGP With Raingun
- ▶ New Website Launch!
- ▶ Major Heads For Oz
- ▶ Visit Our Facebook Page
- ▶ 2012 Shows

**MAJOR**  
WWW.MAJOR-EQUIPMENT.COM

**Head Office:**  
Ballyhaunis, Co. Mayo  
Ireland  
Tel: + 353 (0) 949630572  
[info@major-equipment.com](mailto:info@major-equipment.com)

**UK Office:**  
Major Ind. Estate, Heysham  
Lancs, LA3 3JJ  
Tel: + 44 (0) 1524 850501  
[ukinfo@major-equipment.com](mailto:ukinfo@major-equipment.com)

**Nederland (& Deutschland):**  
Postbus 29, NL-7700 AA Dedemsvaart  
Nederland  
Tel: + 31 (0) 6389 19585  
[euinfo@major-equipment.com](mailto:euinfo@major-equipment.com)



**HEAD OFFICE**

**Major Equipment Intl Ltd**  
Ballyhaunis, Co Mayo  
Ireland  
Tel: +353 (0) 9496 30572

**UK OFFICE**

**Major Equipment Ltd**  
Major Ind. Estate, Heysham,  
Lancs, LA3 3JJ, UK  
Tel: +44 (0) 1524 850501

**Netherlands & Germany OFFICE**

**Major Equipment Intl Ltd**  
Postbus 29, NL-7700 AA  
Dedemsvaart, Nederland  
Tel: + 31 (0) 6389 19585