



---

OPERATORS MANUAL AND PARTS LIST

---

FOR THE

**MAJOR**

**GRASS TOPPERS**

Use only genuine  parts for the best results

## CONTENTS

### Manual -

Introduction .....	2
Warranty .....	3
Safety Instructions .....	4
Mounting Instructions	
Slasher/Topper .....	6
800 Side Mounted .....	8
800 Trailed Topper .....	10
Daily Maintenance .....	12
Recommended Topping .....	14

### Parts List -

Slasher 590 .....	16
Slasher 600 .....	18
Topper 9', 7', 6' .....	20
800 Side Mounted .....	24
Drawbar Assy. for 800 Trailed .....	28
800 Trailed Topper .....	30
Wheel Assy. for 9', 7', 6' Topper .....	34
Gearboxes	
T-4A .....	36
LF15D .....	36
LF135 .....	38
LF135T .....	38

**HEAD OFFICE:** Major Equipment Ltd.,  
Major Industrial Estate,  
Walkers,  
Middleton Road,  
Heysham,  
Lancs LA3 3JJ.

Tel.: (01524) 850501  
Fax: (01524) 850502

**SUB OFFICE:** Grascare Machinery Ltd.,  
Ballyhaunis,  
Co. Mayo,  
Ireland.

Tel.: 0907-30572  
Fax: 0907-30788

## INTRODUCTION

The Major Grass Cutter that you have purchased is the result of costly development and extensive field testing. It is an engineering product backed by a distribution/dealer organisation to give you an efficient after sales service.

This manual has been prepared to enable you to obtain the best results from your machine, so please read it carefully and follow the instructions thoroughly. In this context we draw your special attention to the Safety Instructions overleaf.

Please retain this manual for reference.

## IMPORTANT

The Major Grass Cutters are designed for use with the following horsepowers:

MODEL	HORSEPOWER	
	min	max
590 Slasher	35	75
600 Slasher	30	50
6' Semi Offset	25	40
7' Semi Offset	25	40
7' Central	25	40
9' Central	35	60
800 Side Mounted	35	60
800 Trailed	36	60

When using the Major machines with higher horsepower than those quoted above – care should be taken not to overload the machine.

PTO should only be engaged at low rpm's – especially if the machine is fitted to a tractor with hydraulic PTO engagement.

Failure to comply with the notes above could be detrimental to the mechanics of the machine.

If there is any doubt that the above recommendations cannot be adhered to particularly when in use by inexperienced operators; it is best to consult the manufacturer regarding the fitting of a PTO torque limiting device.

## WARRANTY

The Major Topper is guaranteed for 1 Season.

No Warranty is given where the topper is being used as a hire machine.

Warranty is against faulty workmanship or parts, with the exception of belts, blades, shear studs, shear bolts, spud bolts or PTO shafts, where it will be at the discretion of the manufacturer. No Warranty can be considered unless the parts are returned.

All replacement parts will be supplied on a chargeable basis until Warranty has been accepted.

Please return the Warranty form from the back of the manual, together with a proof of purchase, within 14 days, to register your Warranty. A photocopy of purchase-receipt will suffice as proof of purchase.

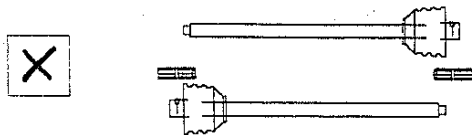
Warranty cannot be considered unless all of the above conditions are complied with.

Following a policy of constant development, the manufacturers reserve the right to alter specifications without prior notice or obligation.

## SAFETY INSTRUCTIONS

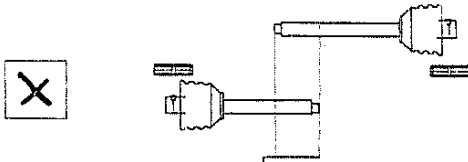
1. Do not allow riders on the machine.
2. Operate only at a safe distance from bystanders.
3. Stop Power Take Off at all times before dismounting the tractor.
4. Keep all PTO guards and safety flaps in place.
5. Use extra caution when operating on rough terrain and in areas where rocks and debris are present.
6. Do not operate along highways or in any areas where people are present.
7. The Machine is designed to operate at 540 rpm maximum tractor PTO speed.
8. Set height stop limit of lift arms to ensure chain and top link of the machine does not penetrate the rear window of the tractor cab – this does not apply to 800T Model.
9. PTO shaft length may be altered to suit the individual tractor model. When machine is in operation the PTO shaft should have one third engagement as shown in figure 3. Figures 1 and 2 shows incorrect and dangerous engagement of PTO shaft.

Fig. 1



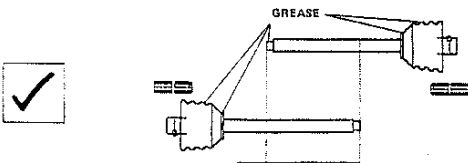
INCORRECT – Driveshaft would bottom when in use.

Fig. 2



INCORRECT – Insufficient tube engagement.

Fig. 3



CORRECT –  $\frac{1}{3}$  rd minimum tube engagement.

10. **DO NOT** engage PTO while in transport position.
11. Take care that PTO shaft does not foul when lifting the machine as shown in figure 4. To prevent this set the hydraulic stop to a safe height or shorten the top link. Manufacturers cannot be held responsible for damage to PTO shafts caused this way (does not apply to 800T and 800SM Models).

**NOTE:-** Please refer to No. 8 of safety instructions above before making alterations to PTO shaft.

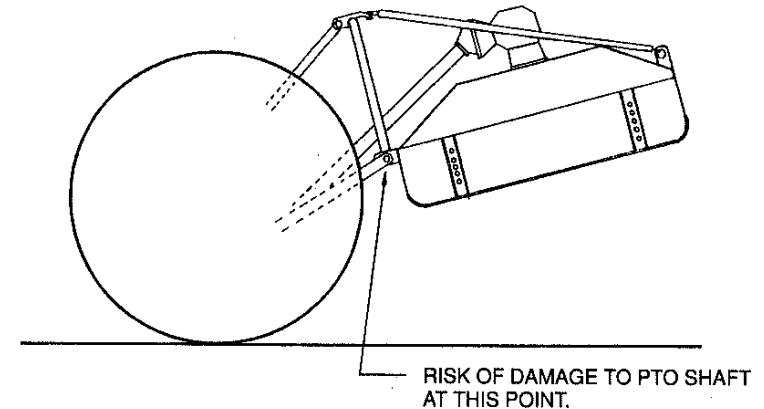
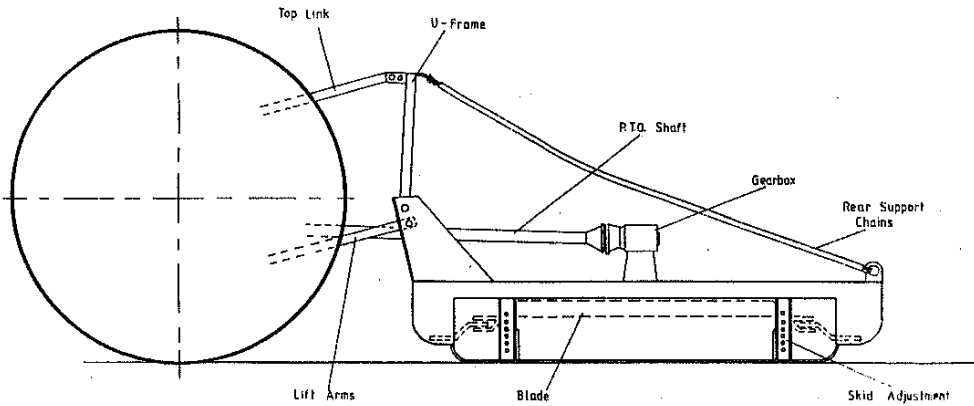


Fig. 4

12. Genuine Spares are available at your local dealer.  
Guarding is available to cover Local Authority Health and Safety Acts of various countries.  
Extra guarding is available on request.
13. Upon initial startup, after purchase of a new machine, always start the machine under load in long grass to assist in self-tightening of the blade systems (does not apply to Slasher 590 and 600 models and 800 SM Model).  
Failure to initially start the machine under load may cause the blades to detach from their mountings and serious injury may result.

Fig. 5

### SLASHER



### MOUNTING INSTRUCTIONS

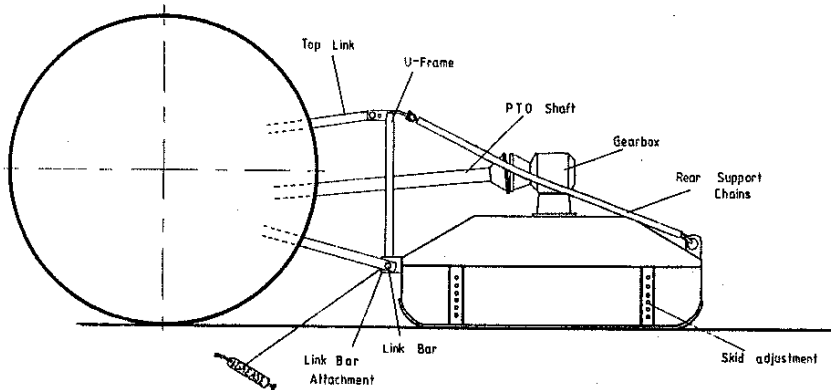
1. Fit the Topper to the tractor linkage in the normal way. Always use stay bars for the best results and to preserve the lift of the machine.
2. Adjust the top link (while lowered in operating position) until the rear support chains are slack (see fig. 5) so that the Topper can follow the contours of the ground and ensure a consistent level of cut.
3. Adjust the side skids to give required depth of cut as shown in Figure 5.
  - (a) Raise the machine off the ground – ensure it is supported from falling – Do not rely on the lift arms.
  - (b) Undo the skid retaining bolts.
  - (c) Move to give the required height of cut that corresponds to the distance from the bottom of the blade to the bottom of the skid.

Suggested cutting heights:

Normal topping	2-3"
Heavy crop	4-5"
Playing pitches	1-2"

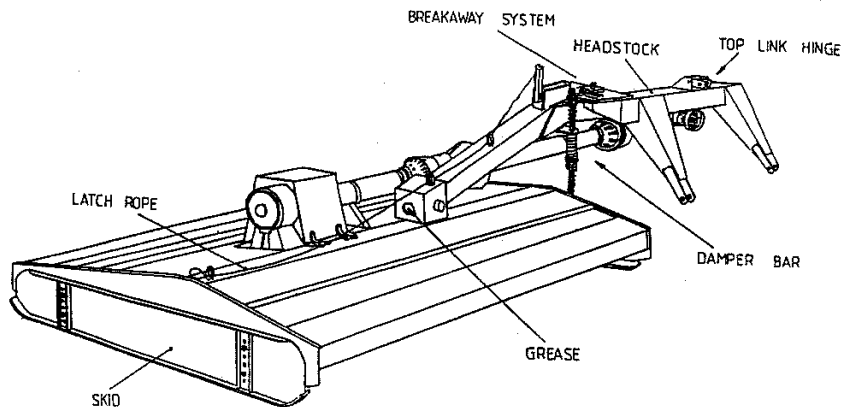
Fig. 6

### TOPPER



## 800 SIDE MOUNTED

Fig. 7



## MOUNTING and OPERATING INSTRUCTIONS for 800SM

1. Fit the tractor to the Topper's headstock in the normal way. Always use stay bars or chains for the best results.
2. Fit the PTO shaft only after it has been checked for length as outlined in the SAFETY INSTRUCTIONS on page 4.
3. It may be necessary to fit front end weights to some tractors to maintain a safe steering load when transporting the topper.
4. Adjust the skids to give the required height of cut. This is done by removing the four retaining bolts and relocating in appropriate holes. The height from the bottom of the skid to the bottom of the side of the machine will be the toping height. However, an extra 30mm (1 1/4") should be added to the required height when setting, to allow for absorption of the topper by the terrain.
5. To move the machine to the operating position:
  - (a) Have the machine in the raised position.
  - (b) Pull the latch rope from the end of the machine and move the machine manually to the cutting position and release the latch rope. Ensure the locking pin is locked in position. Moving to transport position is the reverse.
6. Adjust the top link (while the machine is lowered to the ground in operating position) until the top link hinge piece (see fig. 7) is slack, with the top of the headstock level, towards the tractor. Adjust the levelling box and the hydraulics height stop so that the headstock and transport arm are level and at the right height compared to the machine.
7. With all guards correctly in place, it is now ready to start topping. ENSURE THE AREA TO BE WORKED IN HAS NO BYSTANDERS. FLYING DEBRIS CAN ENDANGER LIVES.
8. When turning corners, do so with wide sweeping turns – as the machine may "dig-in" on some terrain. If sharp turns have to be made, raise the machine when doing so. To protect the machine while in mowing position, a breakaway system is fitted (as shown). This system has been calibrated by the manufacturer to breakaway when the machine hits an obstacle, thereby preventing damage to the machine, and should not be tampered with.
9. With the machine in the raised position it will dip according to how the damper bar is set. The damper bar is adjustable to change the angle of dip, but it also controls the downward force on the topper when cutting, so the spring should be adjusted to have the minimum force on the topper while cutting.

### IMPORTANT

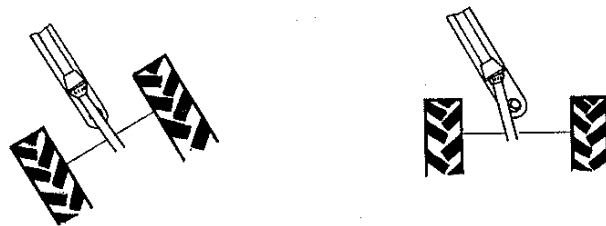
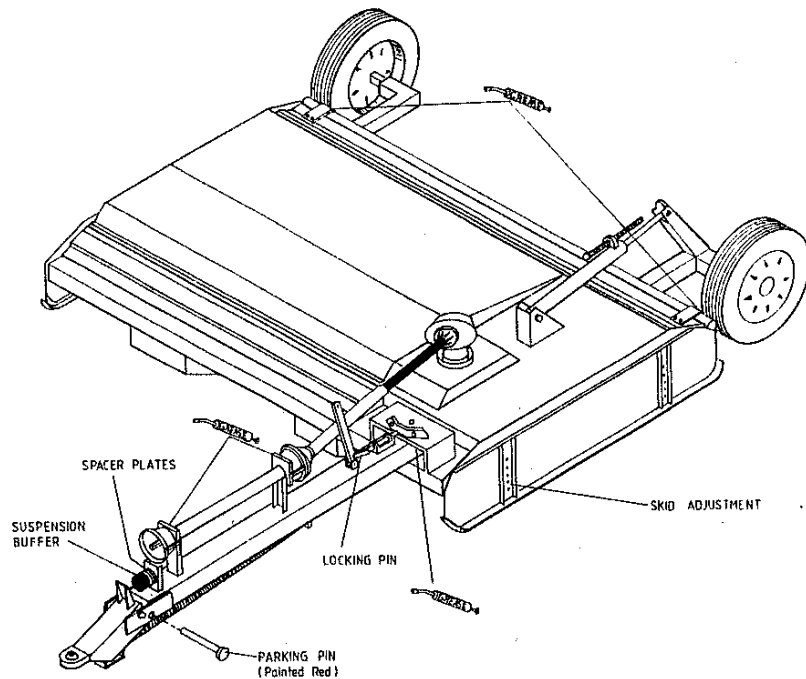
Ensure that the headstock is level and set at the correct height in relation to the topper.

### ATTENTION

DO NOT ENGAGE PTO WHILE IN TRANSPORT POSITION.

## 800 TRAILED TOPPER

Fig. 8



Ensure PTO shaft does not bottom when turning sharply

## MOUNTING and OPERATING INSTRUCTIONS for 800T

1. Adjust the tractor hitch so that the hitch pin is approximately 400mm (16") from the end of the tractor PTO shaft.
2. Connect the topper drawbar to the hitch.

### CAUTION

Remove the parking pin (Painted Red) at this point.

3. With the topper on level ground and set at cutting height check the level of the PTO driveshaft to the tractor. It may be necessary to adjust the hitch level. This is done by removing the spacer plates behind the suspension buffer.
4. Connect the hydraulic hose to the appropriate connection. Lift the machine and adjust the skids to the required height. This is done by the removal of the four skid retaining bolts and relocating. The height to the bottom of the skids to the bottom of the side of the machine will be the topping height. However, an extra 30mm (1 1/4") should be added to the required height when setting, to allow for absorption of the topper by the terrain.
5. The axle stop can now be adjusted. It should be adjusted so that the wheels are taking as much weight of the machine as possible while maintaining good ground contact with the skids.
6. Fit the PTO shaft only after it has already been checked for length as outlined in the SAFETY INSTRUCTIONS on page 4.

### ATTENTION

Do not engage PTO while in transport position.

7. Move the machine into cutting position by:  
Either:
  - (a) On manual control:
    - (i) Lower the topper to the ground.
    - (ii) Pull the locking pin release cord.
    - (iii) Drive the tractor forward while turning to the left.
    - (iv) Ensure the locking pin engages in cutting position.
  - or
  - (b) On the hydraulic control:
    - (i) Raise the topper off the ground.
    - (ii) Pull the locking pin release cord.
    - (iii) Operate the hydraulic control valve to move the topper into operating position.
    - (iv) Ensure the locking pin engages in cutting position.
8. With the PTO shaft and all safety guards in place, it is now ready to start topping.

ENSURE THE AREA TO BE WORKED IN HAS NO BYSTANDERS – FLYING DEBRIS CAN ENDANGER LIVES.

Ensure PTO shaft does not bottom when turning sharply. Refer to Safety Instruction No. 9 on Page 4.

## DAILY MAINTENANCE

1. Check oil level in the gearbox – use EP90 gear oil – ensure the machine is level when checking. Correct level is at level bung mid way up the back of the gearbox. Filling is done by removing the breather plug.
2. Grease pulley bearings (see figure 9). Use lithium base grease N.L.G.I. No. 3 consistency – (does not apply to Slasher 590 and 600 Models and 800SM Model).
3. Tighten V-belt as shown in figure 9 if necessary.

**NOTE:** If the machine will not be used for a long period, it is advisable to release tension from the V-belts to prolong their life. This is done by slackening the nuts and loosening the threaded adjuster. (see figure 9).

**WARNING:** Slacken only the outer pulleys and not the double pulley under the gearbox. Re-tension belts again before use and check after 8 hours operation – (does not apply to Slasher 590 and 600 Models and 800SM Model).

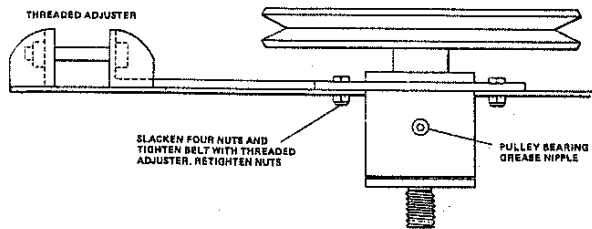


Fig. 9

4. Grease PTO shaft and universal joints.
5. Grease driveshaft bearings, draw bar pivot (see figure 8) and axle bushings – (800T Model only).
6. Grease the 2 points on the top and bottom of the swing arm – (800SM Model only).
7. Straighten any bent blades if necessary.
8. Sharpen blades with grindstone if necessary.
9. Check that undersole skids (saucers) are tight (these retain the blades and must be tight at all times). Note left hand thread. (figure 9) – (Does not apply to Slasher 590 and 600 Models and 800SM Model).
10. Ensure blade pivot bolts are tight.
11. If blades are loose on pivots, check if blade bushes have worn excessively. replace if necessary.  
**NOTE:** When replacing bushings the pivot bolts must also be replaced. Use the correct high tensile bolt – failure to do so may result in the blade detaching at work and serious injury may result.
12. Check tightness of all nuts after first and second hours of operation.

13. Check wheel nuts daily – (800T Model).
14. Oil/grease link arm attachments. (see figure 6) – (does not apply to Slasher 590 and 600, 800T and 800SM Models).
15. Ensure safety flaps are in place at all times, where fitted.
16. Due to corrosive nature of grass when cut, wash down the machine when finished topping, especially when the topper is being stored for a long period.

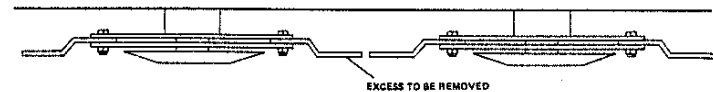
**TO TIGHTEN BLADE** – (does not apply to Slasher 590 and 600 Models and 800SM).

1. Remove PTO drive shaft from tractor.
2. Wedge the blade.
3. Bolt on special tool provided to the saucer.
4. Tighten saucer with several hard blows to the end of special tool.
5. Remove tool.

**NOTE:** After tightening blade start machine under load i.e. in long grass to assist self tightening of blade.

If new blades have been fitted, rotate by hand after assembly. If they foul, remove excess by means of grindstone.

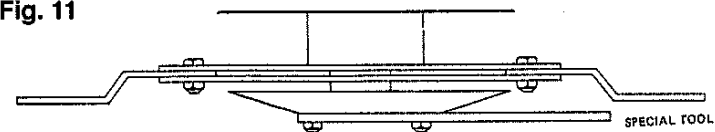
Fig. 10



**TO REPLACE V-BELTS** – (does not apply to Slasher 590 and 600 and 800SM Models).

1. Slacken outer drive pulleys (see figure 9).
2. Undo gearbox retaining bolts.
3. Withdraw gearbox from mounting plate.
4. Remove belts from pulleys.
5. Wrap new belts around double pulley only.
6. Replace gearbox – ensure it engages correctly in splined bush.
7. Tighten gearbox bolts.
8. Wrap belts around outer pulleys and tension as figure 9.
9. Check belt tension after 8 hours operation – readjust if necessary.

Fig. 11





## **RECOMMENDATIONS ON TOPPINGS**

The ideal topping conditions as recommended by the agricultural authorities are for grazing pastures to be cut back to 5-7.5cm (2-3"). The following situations have been encountered by farmers and suggested cutting heights are given by their experience:

- grasses cut for grazing – lush, leafy grass – 5-7.5cm (2-3")
- grazing – stemmy, lush mix 7.5-10cm (3-4")
- horse grazing – both types 10-12.5cm (4-5")

They discovered that stemmy or "trany" grass was difficult to cut cleanly unless cut at 5-7.5cm (2-3") high. Attempting to cut any higher than this was not giving enough resistance to the blade to cut it, as some of the stems were blown away from the blade and left behind.

In this case, the amount of stems left uncut would not be detrimental to the performance of the pasture, but may appear unsightly. There should be no need to "top" grass any higher than this, if good pasture management routine is in operation and the growth does not go too far ahead of the machine.

The situation of topping a heavy crop is most likely to be encountered when the machine is first purchased. Attempts to top a heavy crop, i.e. cut too much off when the pasture has gone too far ahead, will be detrimental to the mechanics of the machine. In such a case, it is suggested that the job is tackled with two cuttings, some days apart.

Damage caused by overloading would be belt slip and eventual failure. Gearbox failure could occur with continuous overloading.

The forward speed will be restricted only by the combination of type of crop and undulations of the ground.

Some suggestions are:

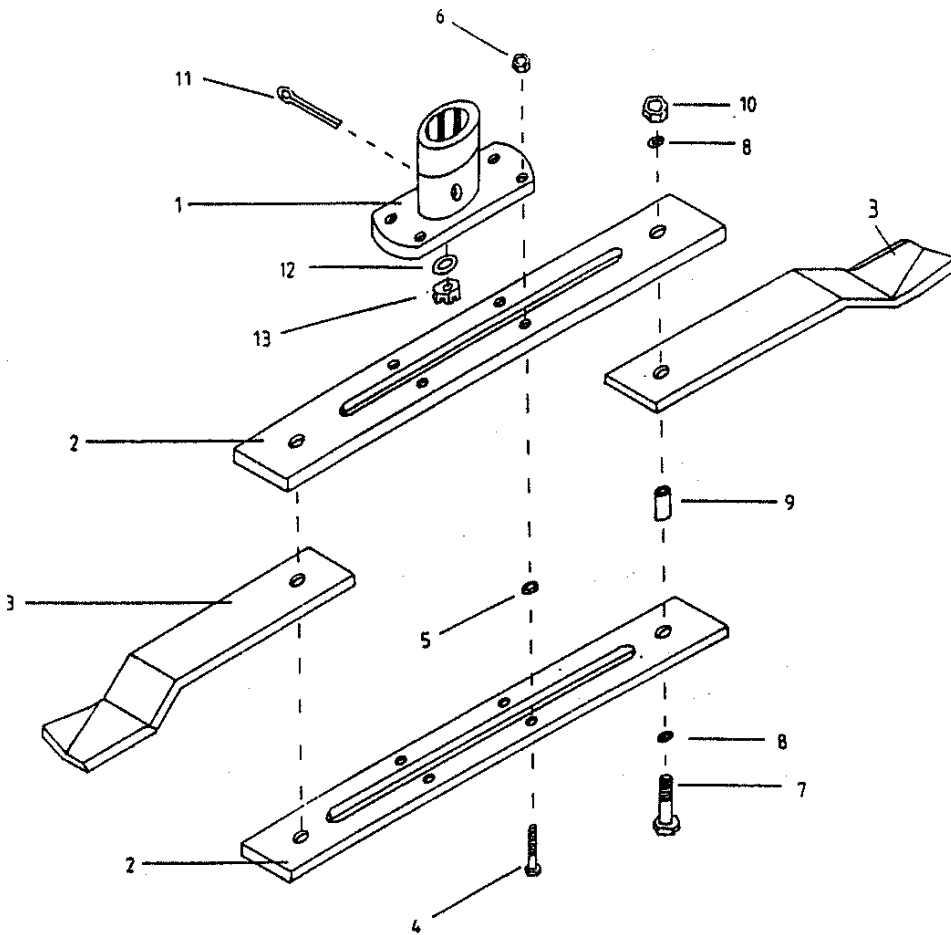
- (a) Ideal topping of lush grass
  - forward speed 10 - 20kmph (7 - 12mph)
  - PTO speed 350 - 450rpm.
- (b) Heavy crop, eg. first topping
  - forward speed 5 - 10kmph (3 - 6mph)
  - PTO speed 350 - 450rpm.
- (c) Rushes or hard grasses
  - forward speed 5 - 10kmph (3 - 6mph)
  - PTO speed 350 - 450rpm.
  - ensure blades are sharp.



**USE ONLY GENUINE MAJOR SPARE PARTS FROM YOUR DEALER**

# SLASHER 590

## SLASHER 590 BLADE SYSTEM

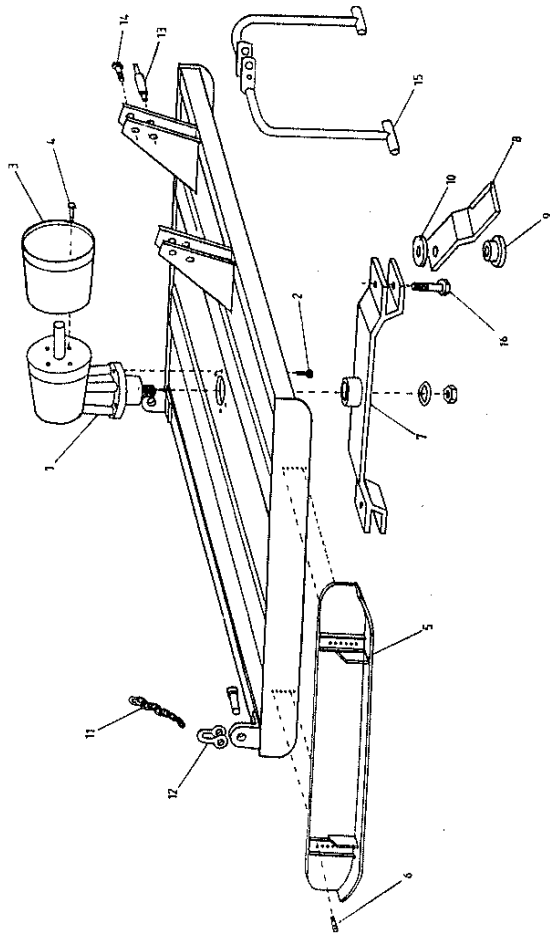


# SLASHER 590 BLADE SYSTEM

Quantities are for the whole machine. Prices are excluding VAT.

DRG NO.	PART NO.	DESCRIPTION	QTY	RETAIL PRICE PER SINGLE ITEM
1	GB590/1	Blade Mounting	1	
2	8SM9/2	Blade Stiffener	2	
3	NTSB10A/1	Flail Blade	2	
4	12x214FBZP	Blade Mounting Bolt	4	
5	8SM9/3	Spacer Bush	16	
6	1/2F	Nyloc Nut	4	
7	M20X60BZP	Blade Pivot Bolt	2	
8	FWH20	Hardened Washer	4	
9	8SM9/4	Blade Bush	2	
10	M20	Nyloc Nut	2	
11	GB590/2	Split Pin	1	
12	GB590/3	Gearbox Shaft Washer	1	
13	GB590/4	Gearbox Shaft Nut	1	

## SLASHER 600

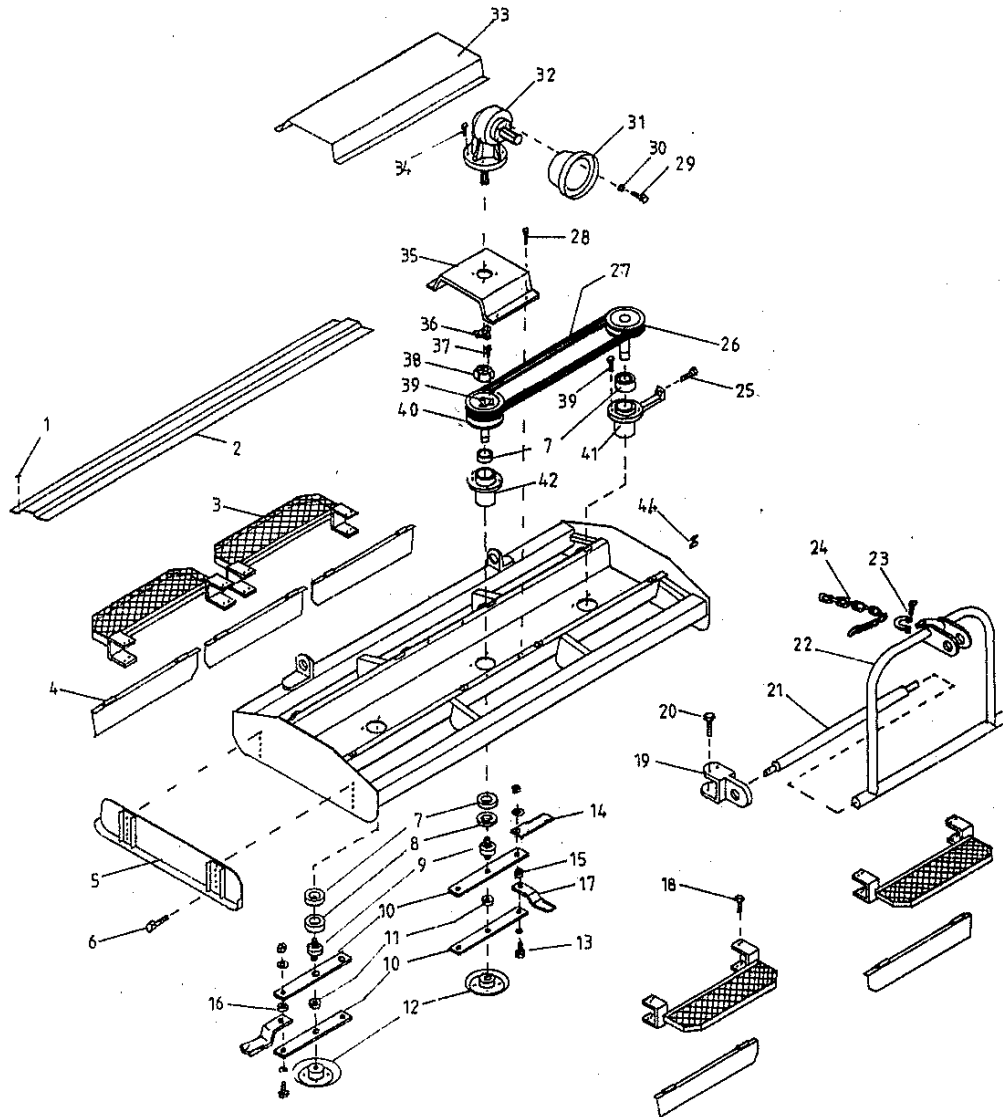


## SLASHER 600 ASSEMBLY PARTS

Quantities are for the whole machine. Prices are excluding VAT.

DRG NO.	PART NO.	DESCRIPTION	QTY	RETAIL PRICE PER SINGLE ITEM
1	LF135	Gearbox (for Parts see Page 44)	1	
2	M16X50BZP M16	Bolt and Nut for gearbox	4	
3	NT20A	PTO Guard for Gearbox	1	
4	M8X16SZP	Screws for PTO Guard	4	
5	SLH16AS	Skid	2	
6	M12X30SZP M12	Bolt and Nut for Skid	8	
7	SLH03C	Blades Beam	1	
8	SLH11C	Blade	2	
9	SLH06A	Hardened Pivot Bush	2	
10	SLH07A	Blade Washer	2	
11	NT29BSL6	Complete Support Chain Slash 600	1	
12	SNT29A	1/2" d Shackles	3	
13	S15707	Lift Arm Double Ended Pin	2	
14	M20X100BZP M20	A-Frame Bolt Nyloc Nut	2 2	
15	SLH11A	A-Frame	1	
16	M20X100BZP	Bolt and Nut for Blades	2	
17	T50BO-1100	PTO Shaft with shear bolt	1	

## MAIN FRAME for 9ft, 7ft and 6ft Toppers



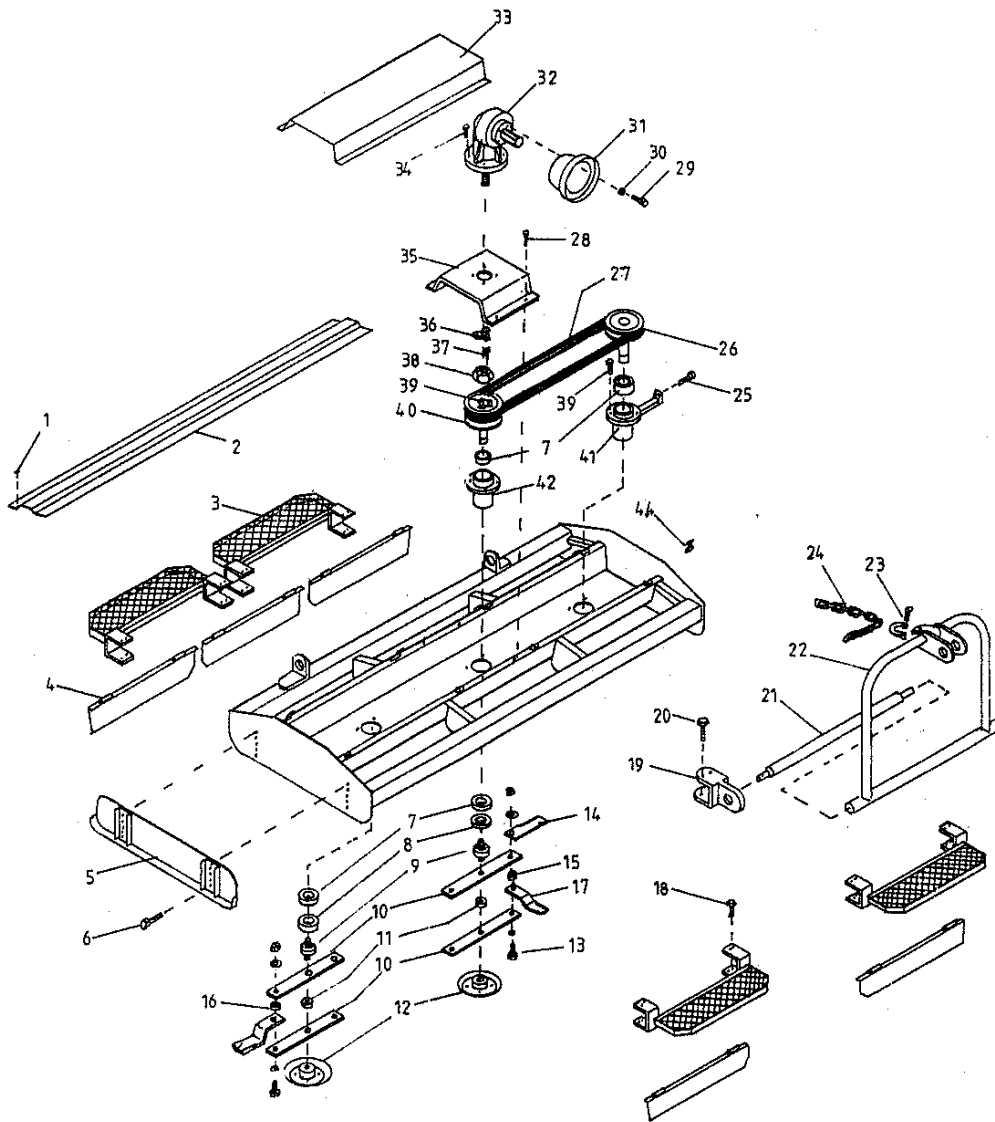
## MAIN FRAME for 9ft, 7ft and 6ft Toppers

Quantities are for the whole machine. Prices are excluding VAT.

DRG NO.	PART NO.	DESCRIPTION	QTY	RETAIL PRICE PER SINGLE ITEM
1	NT14C	Screws for Corrugated Cover	16	
2	NT14A	Corrugated Cover (9ft)	2	
	ST14A	Corrugated Cover (7ft)	2	
	SXT14A	Corrugated Cover (6ft)	2	
3	NTSGR	Safety Guard – Rear (9ft Model)	2	
	NTSGF	Safety Guard – Front (9ft Model)	2	
	STSGF	Safety Guard – Front (7ft Model)	2	
	STSGR	Safety Guard – Rear (7ft Model)	2	
4	NT15	Stone Guard (9ft Model) (Optional Extra)	5	
	ST15	Stone Guard (7ft Model) (Optional Extra)	5	
5	NT11	Skids (9ft Model)	2	
	SLH02AS	Skids (7ft Model)	2	
6	M12X35BZP	Bolts and Nuts for NT11	8	
7	6210Z	Bearing Sealed one side	1	
8	NT09A	Dust Washer	1	
9	NT10A	Spud Bolt c/w M8 Grub Screws	1	
10	NTSB11A	Blade Stiffener (9ft, 6ft Model)	2	
	NTSB11BS	Blade Stiffener (7ft Model)	2	
11	NTSB12A	Spacer Bush	1	
12	NT23A	Undersole Skid	1	
13	M20X60N	Blade Pivot Bolt and Nyloc Nut	2	
14	NTSB12C	Overlapping Blades for Centre Rotor	2	
15	NTSB12BL	Flail Blade Pivot Bush For Centre Blade	2	
16	NTSB12BS	Flail Blade Pivot Bush (9ft Model) (7ft and 6ft Model)	4	
			2	
17	NTSB10A	Flail Blade (9ft Model) (7ft and 6ft Model)	6	
			4	
18	M12X120BZP	Bolts and Nuts for NTSGR/F	8	
	M12			

Continued over

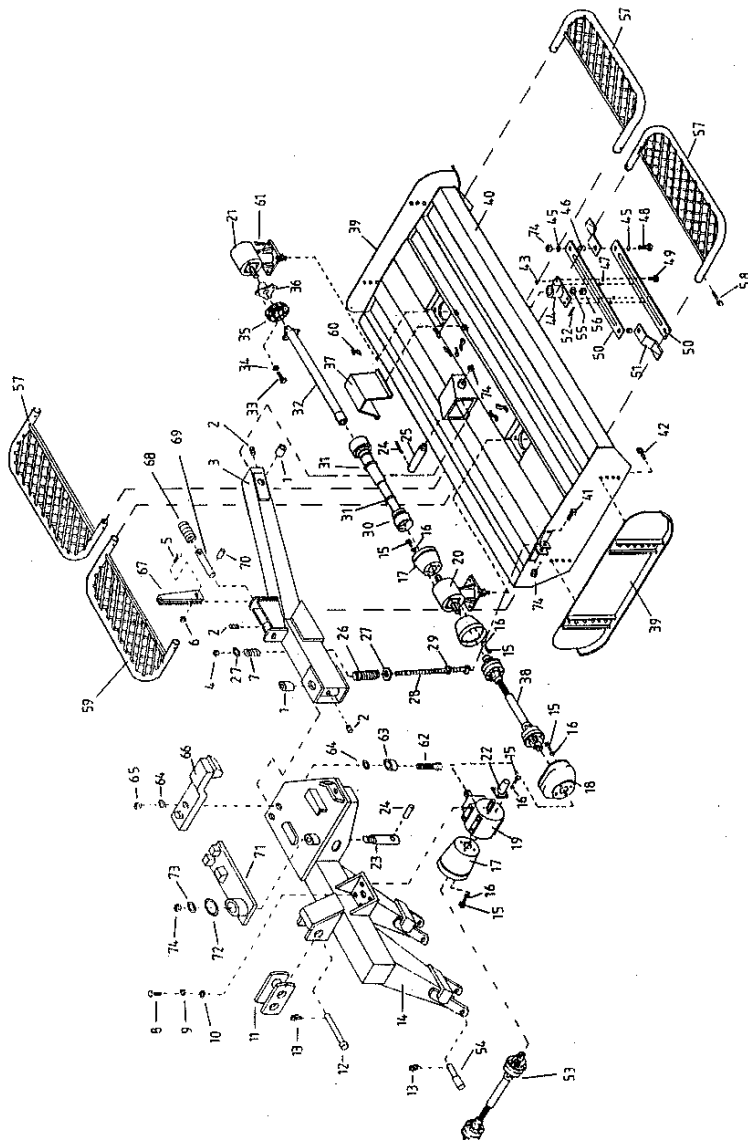
## MAIN FRAME for 9ft, 7ft and 6ft Toppers



## MAIN FRAME for 9ft, 7ft and 6ft Toppers

DRG NO.	PART NO.	DESCRIPTION	QTY	RETAIL PRICE PER SINGLE ITEM
19	SLH10C	Link Bar Bracket (New Type)	2	
20	M12X12ON	Bolt and Nut for SLH10C	4	
21	NT30B	Link Bar Cat I or	1	
	NT30C	Link Bar Cat II	1	
22	NT30A	U-Frame	1	
23	NT29A	D-Shackles	3	
24	NT29B6	Complete Support Chain 6ft	1	
	NT29B7	Complete Support Chain 7ft	1	
	NT29B9	Complete Support Chain 9ft	1	
25	M16X50BZP	Housing Adjustor Bolt	2	
26	NT24A	Pulley c/w Shaft-High	1	
	NT24C	Pulley c/w Shaft-Low	1	
27	NT25A	V-Belt (9ft and 6ft Models)	1	
	NT25B	V-Belt (7ft Centre Model)	1	
	NT25AC	V-Belt (7ft Semi Offset Model)	1	
28	M16X40BZP	Bolt and Nyloc Nut	4	
29	M8X16S	Set Screws	4	
30	M8W	Washer	4	
31	NT20A	PTO guard	1	
32	LF15D	Gearbox (for Parts see Page 42)	1	
33	NT29C	Pulley Covers (9ft)	2	
	ST29C	Pulley Covers (7ft)	2	
	ST30A	Pulley Cover Long (7ft)	1	
	ST30B	Pulley Cover Short (7ft)	1	
	SXT29C	Pulley Covers (6ft)	1	
34	58X234FBZP	Bolt and Nyloc Nut	4	
35	NT32A	Gearbox mounting Plate	1	
36	NT55B	Finger Plate with Bush	1	
37	12X234FB	Rubber Coupling Bolts	6	
38	NT55A	Rubber Coupling Core	1	
39	NT55E	Finger Plate	1	
40	NT22A	Double Pulley Assy With Coupling	1	
41	NT03A	Outside Bearing Housing	2	
42	NT03AB	Bearing Housing	1	
43	NT28B	Rubber Clasp c/w Pin	4	
--	T5O-1100	PTO Shaft	1	

## 800 SIDE MOUNTED



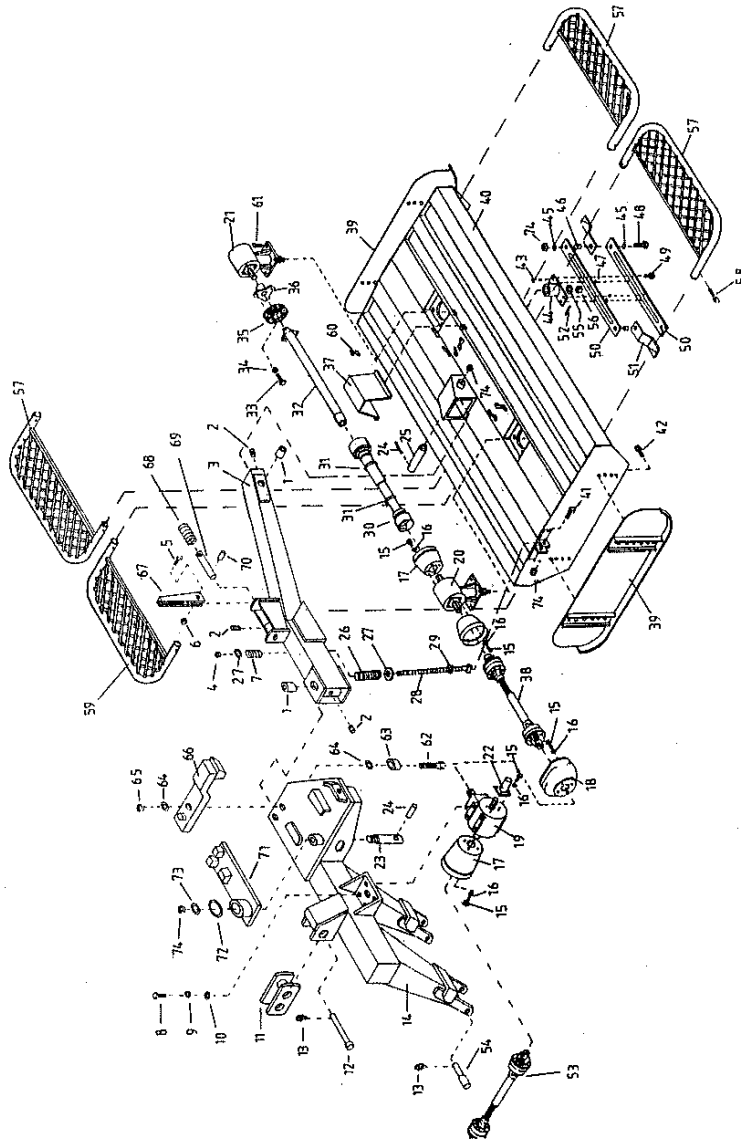
## 800 SIDE MOUNTED

Quantities are for the whole machine. Prices are excluding VAT.

DRG NO.	PART NO.	DESCRIPTION	QTY	RETAIL PRICE PER SINGLE ITEM
1	8SM14	Glacier Bushing	4	
2	1039	Grease Nipple	3	
3	8SM4	Transportation Arm	1	
4	M24	Nyloc Nut	1	
5	M12X50BZP	Bolt	1	
6	M12	Nyloc Nut	1	
7	8SM12	Top Damper Spring	1	
8	M12X30BZP	No. 1 Gearbox Bolt	4	
9	SWM12	Spring Washer	4	
10	FWM12	Flat Washer	4	
11	8SM8	Top Link Hinge	1	
12	8SM17	Top Link Pivot Pin	1	
13	AN099/8	Lynch Pin	3	
14	8SM1	Linkage Frame	1	
15	M8X16SZP	PTO Guard Bolt	20	
16	FWM8	PTO Guard Washers	20	
17	NT20A	Round PTO Guard	3	
18	8SM11/4	Oval PTO Guard	1	
19	T-304A	No. 1 Gearbox	1	
20	LF135T	No. 2 Gearbox	1	
21	LF135	No. 3 Gearbox	1	
22	T4AG	Stub Driveshaft Guard	1	
23	8SM7	Top Pivot Pin	1	
24	8RP50	Roll Pin	2	
25	8SM6	Bottom Pivot Pin	1	
26	8SM13	Bottom Damper Spring	1	
27	FWM24	Washer	2	
28	8SM5	Damper Bar	1	
29	M24HEX	Plain Nut	2	
30	8SM1/2	Fixed Driveshaft Guard	1	
31	8SM16	Fixed Driveshaft Guard Clips	2	
32	8SM15	Fixed Driveshaft	1	
33	12X212FB	Bolt	6	
34	SW12	Spring Washer	6	
35	NT55A	Rubber Coupling Core	1	

Continued over

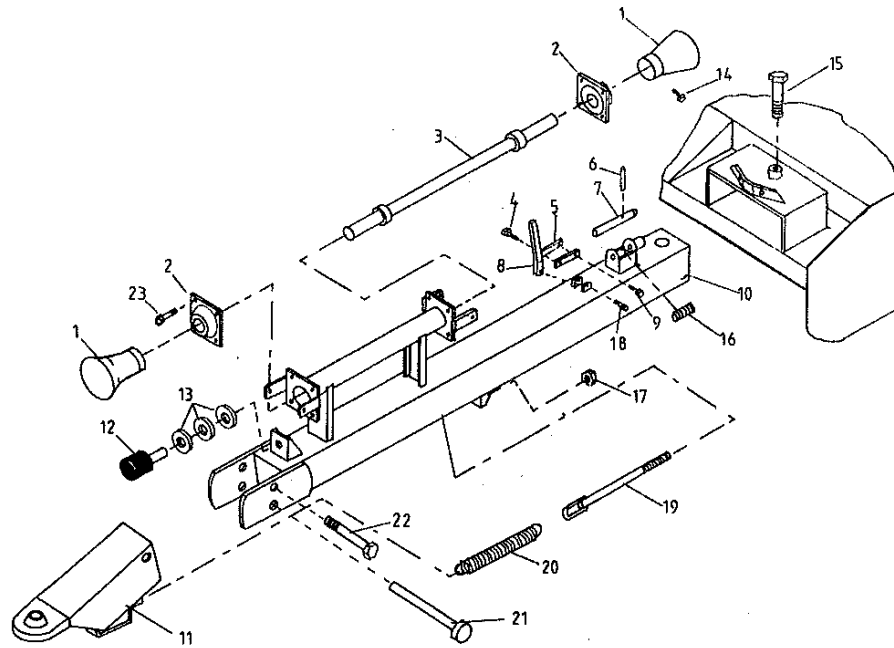
## 800 SIDE MOUNTED



## 800 SIDE MOUNTED

DRG NO.	PART NO.	DESCRIPTION	QTY	RETAIL PRICE PER SINGLE ITEM
36	8M18	Fixed Driveshaft Coupling	1	
37	8SM19	Rubber Coupling Cover	1	
38	T50 - 1075	No. 2 Driveshaft	1	
39	NT11	Skids	2	
40	8SM2	Topper Body	1	
41	M20X90BZP	Bolt	1	
42	M12X35BZP	Bolt	8	
	M12	Nyloc Nut	8	
43	1/2F	Nyloc Nut	8	
44	8SM10	Blade Mountings	2	
45	FWH20	Hardened Washer	8	
46	8SM9/4	Blade Bushing	4	
47	8SM9/3	Spacer Bushes	8	
48	M20X60B	Blade Pivot Bolt	4	
49	12X2FB	Blade Mounting Bolts	8	
50	8SM9/2	Blade Stiffener	4	
51		Flail Blades		
	8SM9/1	Clockwise Blade (from top)	2	
	NTSB10A	Anti-Clockwise Blade (from top)	2	
52	GBPINS	Split Pins	2	
53	T50900	PTO Shaft	1	
54	S15707	Double Ended Link Pin	2	
55	LF135/2	Gearbox Shaft Washer	2	
56	LF135/1	Gearbox Shaft Nut	2	
57	8STG	Safety Guard	3	
58	M12X60BZP	Bolt	8	
	M12	Nyloc Nut	8	
59	8STGS	Safety Guard	1	
60	NT28B	Rubber Clasp c/w Pin	2	
61	58X212FBZP	Bolt	8	
	5/8F	Nyloc Nut	8	
62	M16x150BZP	Bolt	1	
63	8SM4/24	Spacer Bush	1	
64	M16DSW	Disc Washer	38	
65	M16	Nyloc Nut	1	
66	8SM4/22	Breakaway Clasp	1	
67	8SM4/20	Rope Latch	1	
68	8SMLPS	Locking Pin Spring	1	
69	8T8	Locking pin	1	
70	RP660	Roll Pin	1	
71	8SM4/19	Breakaway Arm	1	
72	FWM38	Washer	1	
73	FWM20	Washer	1	
74	M20	Nyloc Nut	7	

## DRAWBAR ASSEMBLY



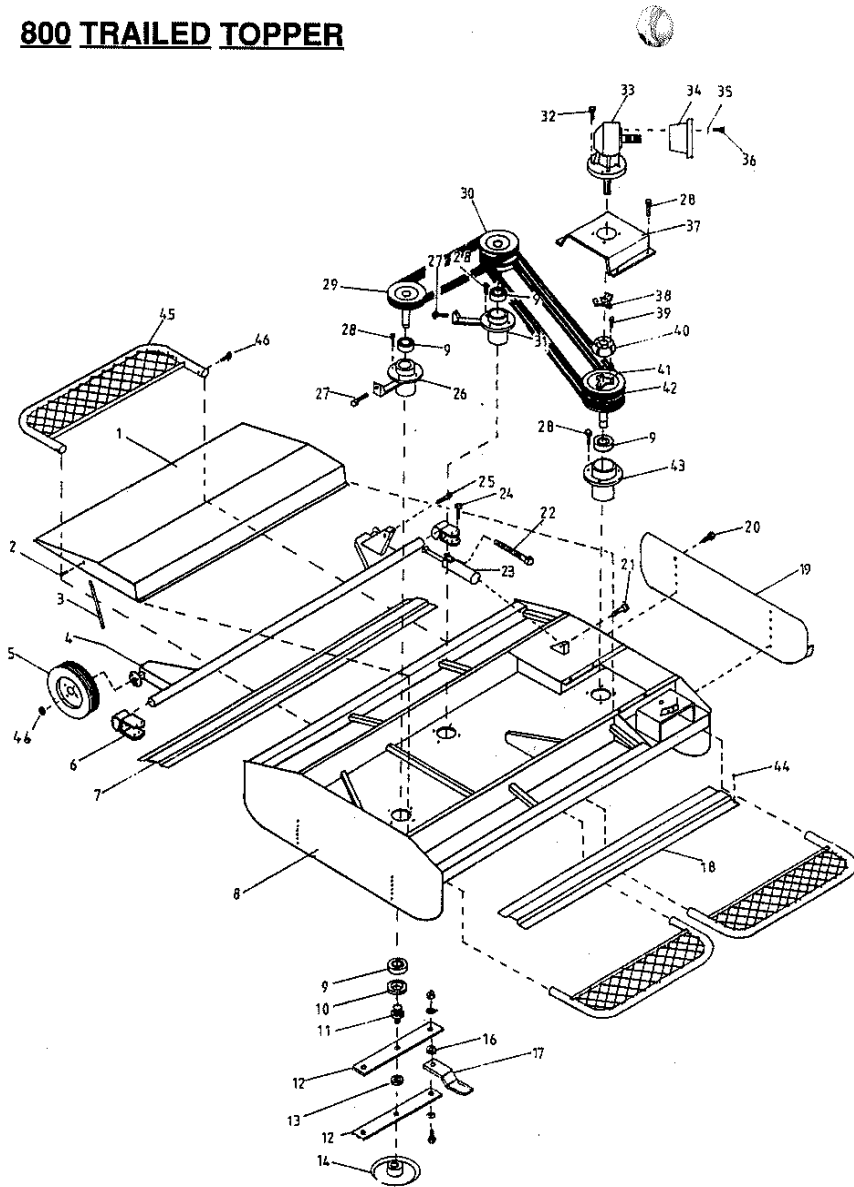
## DRAWBAR ASSEMBLY for 800T

Quantities are for the whole machine. Prices are excluding VAT.

DRG NO.	PART NO.	DESCRIPTION	QTY	RETAIL PRICE PER SINGLE ITEM
1	AM43	PTO Guard	2	
2	BR13/8	Driveshaft Bearing	2	
3	8T1/3	Fixed Driveshaft	1	
4	M12X40BZP M12	Bolt and Nyloc Nut	1	
5	8T17	Locking Pin Link	2	
6	8T18	Locking Pin Roll Pin	1	
7	8T8	Locking Pin	1	
8	8T16	Locking Pin Lever	1	
9	M12X50BZP M12	Bolt and Nyloc Nut	1	
10	8T3	Drawbar	1	
11	8T2	Hinge Drawbar	1	
12	MOT10	Suspension Buffer	1	
13	8T19	Spacer Plates	3	
14	M10X25BZP M10	Bolt and Nyloc Nut	4	
15	1X712FB 1/F	Bolt and Nyloc Nut	1	
16	8T15	Locking Pin Spring	1	
17	M20	Nyloc Nut	1	
18	M12X50BZP M12	Bolt and Nyloc Nut	1	
19	8T20	Spring Tensioner	1	
20	MB2S	Drawbar Spring	1	
21	8T21	Parking Pin	1	
22	M20X150BZP M20	Bolt and Nyloc Nut	1	
23	M20X25BZP M20	Bolt and Nyloc Nut	8	
—	T50 - 1100	PTO Shaft	1	



## 800 TRAILED TOPPER



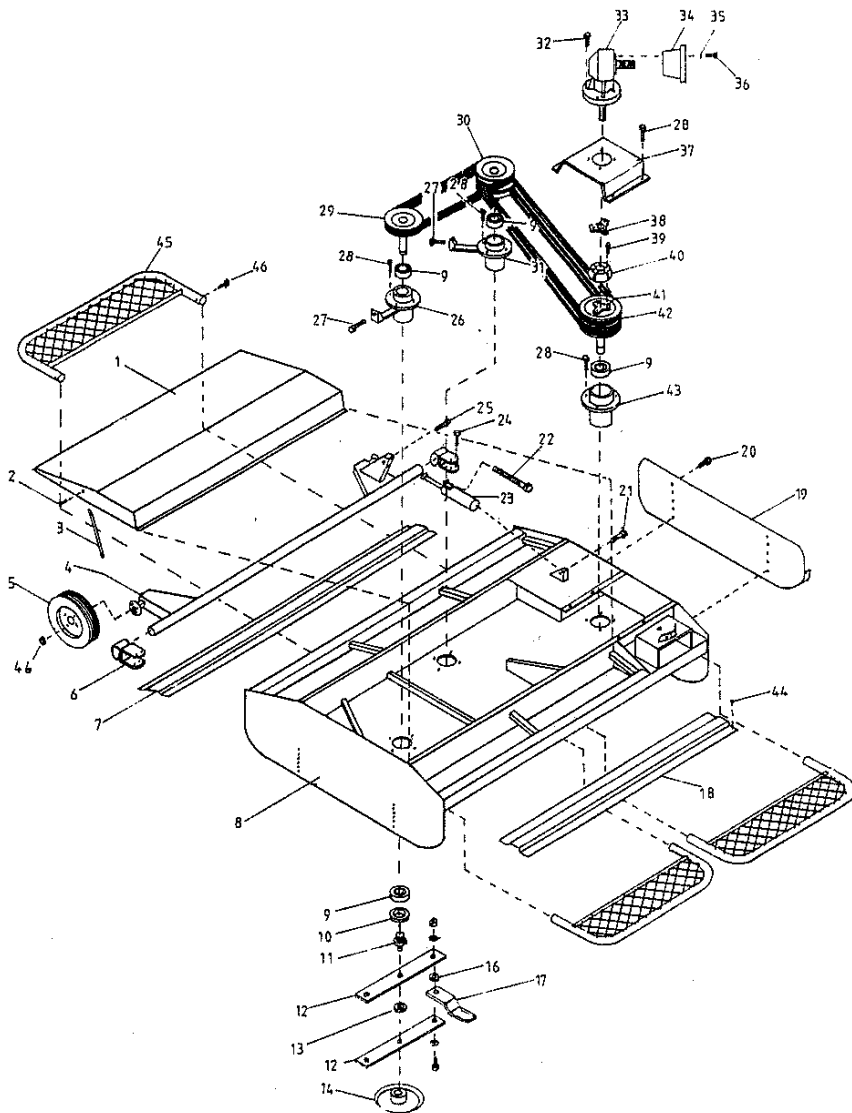
## 800 TRAILED TOPPER

Quantities are for the whole machine. Prices are excluding VAT.

DRG NO.	PART NO.	DESCRIPTION	QTY	RETAIL PRICE PER SINGLE ITEM
1	8T6	Main Cover	1	
2	M12X25N M12	Bolt and Nyloc Nut	2	
3	8T14	Cover Check Chain	1	
4	8T7	Axle	1	
5	16513	Wheel	2	
6	8T12	Axle Clamp	2	
7	8T11	Back Corrugated Cover	1	
8	8T4	Main Frame	1	
9	6210Z	Bearing sealed one side	6	
10	NT09A	Dust Washer	3	
11	NT10A	Sput Bolt c/w M8 Grub Bolts	3	
12	NTSB11A	Blade Stiffener	6	
13	NTSB12A	Spacer Bush	3	
14	NT23A	Undersole Skid	3	
15	M20X60BZP M20	Blade Pivot Bolts and Nuts	6	
16	NTSB12BS	Flail Blade Pivot Bush	6	
17	NTSB10A	Flail Blade	6	
18	8T10	Front Corrugated Cover	1	
19	SLH07AB	Skids	2	
20	M12X35BZP M12	Skid Bolt with Nyloc Nut	8	
21	M20X120N M20	Bolt and Nyloc Nut	1	
22	8T22	Ram Stop	1	
23	8T23	Lifting Ram	1	
24	M12X120 M12	Bolt and Nyloc Nut	1	
25	8M20X100N M20	Bolt and Nyloc Nut	1	
26	8T03AE	Bearing Housing	1	
28	12X2FBZP 1/2F	Bolt and Nyloc Nut	4	
29	MOT31	Single Pulley c/w Shaft	1	
30	MOT30	Triple Pulley c/w Shaft	1	
31	8T03A	Bearing Housing	1	

Continued over

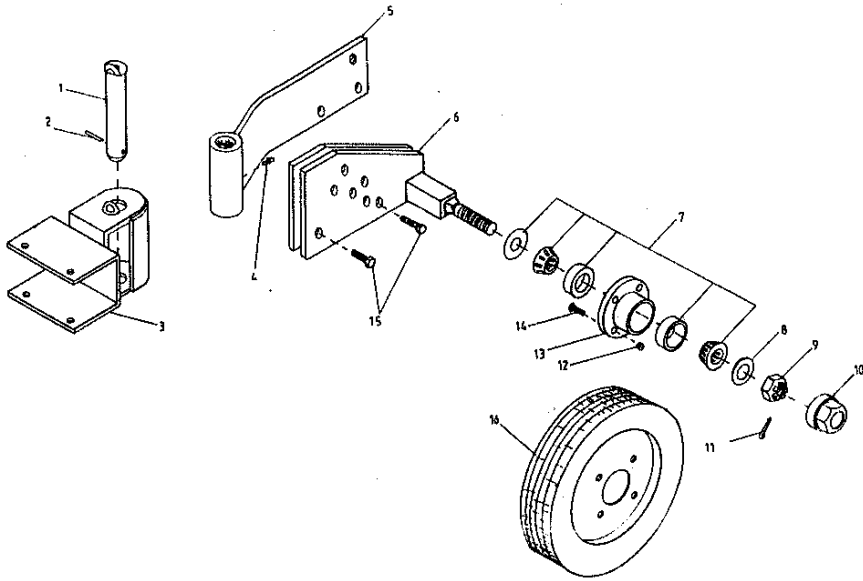
# 800 TRAILED TOPPER



# 800 TRAILED TOPPER

DRG NO.	PART NO.	DESCRIPTION	QTY	RETAIL PRICE PER SINGLE ITEM
32	12X2FBZP	Bolt and Nyloc Nut	4	
33	LF15D	Gearbox	1	
34	NT20AA	Gearbox PTO Guard	1	
35	FWM8	Washer	4	
36	M8X16S	Set Screws	4	
37	8T5	Gearbox Mounting Plate	1	
38	NT55B	Finger Plate with Bush	1	
39	12X212FB	Rubber Coupling Bolts	6	
40	NT55A	Rubber Coupling Core only	1	
41	NT55E	Finger Plate	1	
42	NT22A	Double Pulley Assy. with Coupling	1	
43	NT03A	Bearing Housing	1	
44	NT14C	Screws for Cover	14	
45	8STG	Safety Guard	3	
46	M8X60BZP	Bolt and Nyloc Nut	6	
47	22206	Wheel Nut	4	
48	16513	Wheel	2	
—	T50BO - 900	PTO Shaft	1	

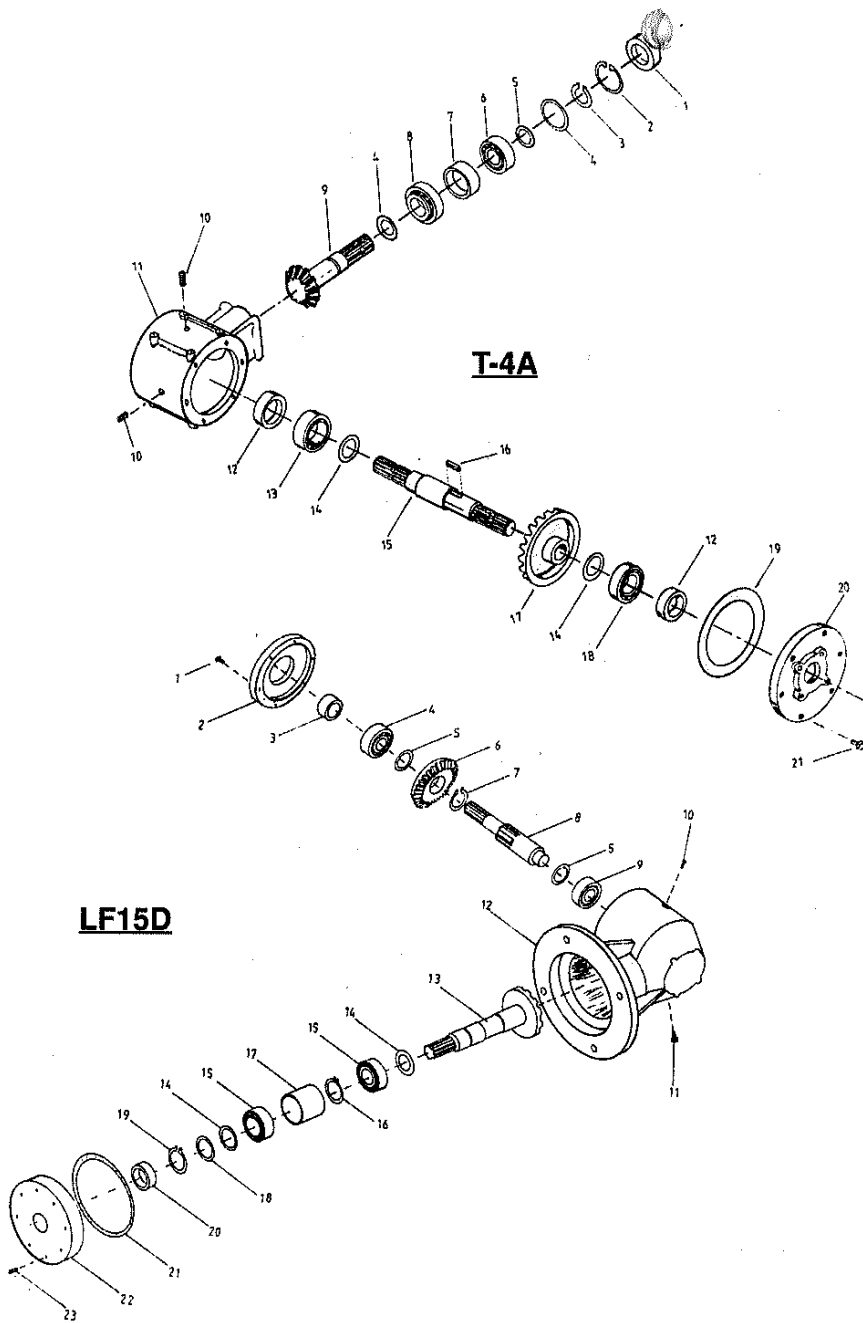
## WHEEL ASSEMBLY



## WHEEL ASSEMBLY

Quantities are for the whole machine. Prices are excluding VAT.

DRG NO.	PART NO.	DESCRIPTION	QTY	RETAIL PRICE PER SINGLE ITEM
1	NT20/1	Pivot Pin	1	
2	NT20/2	Roll Pin	1	
3	NT20/3	Clamp	1	
4	1039	Grease Nipple	1	
5	NT20/4	Pivot Arm	1	
6	NT20/5	Adjustable Plates	1	
7	BK015	Bearing Kit	2	
		Bearing	1	
		Seal	1	
8	200350	Washer	1	
9	20040/1	Castle Nut	1	
10	20040/1	Dust Cover	1	
11	20034	Split Pin	1	
12	22206	Wheel Nut	4	
13	200406	Hub	1	
14	22205	Stud Bolt	4	
15	M20X45	Bolt for Anchor Plates and	2	
	M20	Nyloc Nut	2	
16	NTWL1	Wheel	1	
-	8SM14	Glacier Bushing	4	



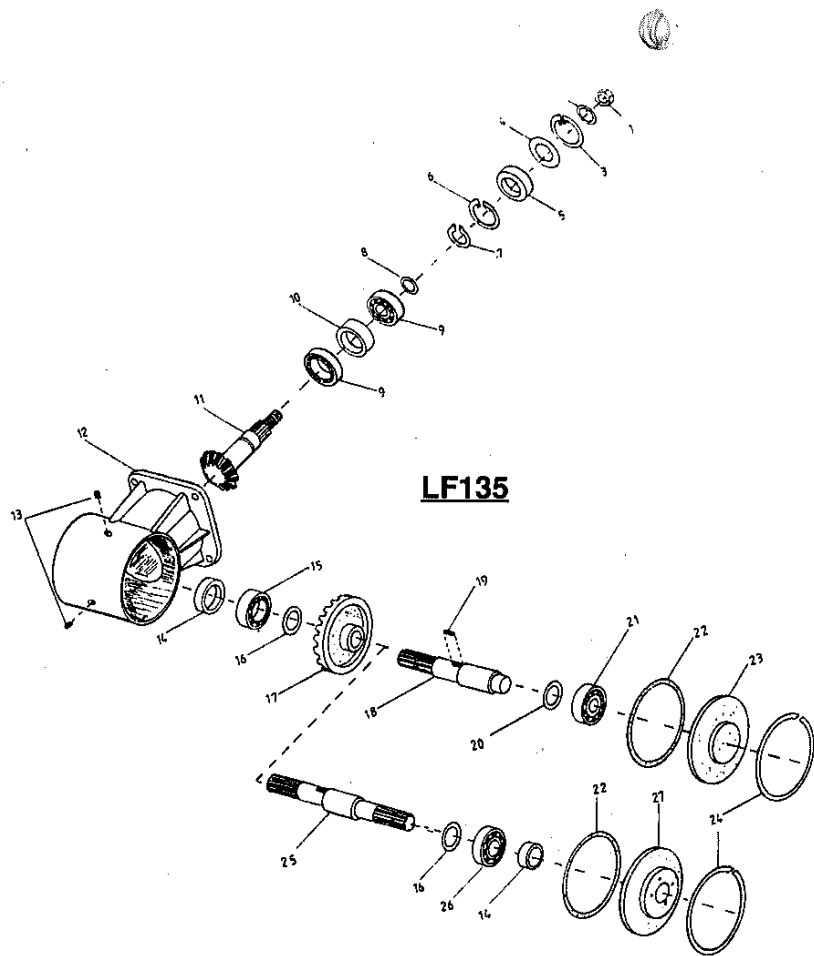
### T-4A GEARBOX

Quantities are for the whole machine. Prices are excluding VAT.

DRG NO.	PART NO.	DESCRIPTION	QTY	RETAIL PRICE PER SINGLE ITEM
1	T-4A/1	Oil Seal	1	
2	T-4A/2	Snap Ring	1	
3	T-4A/3	Snap Ring	1	
4	T-4A/4	Shim	2	
5	T-4A/5	Shim	1	
6	T-4A/6	Bearing	1	
7	T-4A/7	Spacer	1	
8	T-4A/8	Bearing	1	
9	T-4A/9	Pinion Shaft	1	
10	LF135/13	Plug	3	
11	T-4A/11	Casing	1	
12	T-4A/12	Oil Seal	2	
13	T-4A/13	Bearing	1	
14	LF135/8	Shim	2	
15	T-4A/15	Shaft	1	
16	LF135/19	Parallel Key	1	
17	T-4A/17	Gear (29 Teeth)	1	
18	T-4A/18	Bearing	1	
19	T-4A/19	Gasket	1	
20	T-4A/20	Cover	1	
21	M8X22B	Bolt	6	

### LF15D GEARBOX

1	MBX22B	Bolt MBX22	6	
2	LF15D/2	Cover	1	
3	LF15D/3	Oil Seal	1	
4	LF15D/4	Bearing	1	
5	LF135/8	Shim	2	
6	LF15D/6	Gear (35 Teeth)	1	
7	LF15D/7	Snap Ring	1	
8	LF15D/8	Shaft	1	
9	LF15D/9	Bearing	1	
10	LF15D/10	Oil Filler Plug	1	
11	LF135/13	Plug	1	
12	LF15D/12	Casing	1	
13	LF15D/13	Pinion (12 Teeth)	1	
14	LF15D/14	Shim	2	
15	LF15D/15	Bearing	2	
16	LF15D/16	Snap Ring	1	
17	LF15D/17	Spacer	1	
18	LF15D/18	Shim	1	
19	LF15D/19	Snap Ring	1	
20	LF15D/20	Double Lip Seal	1	
21	LF15D/21	Gasket	1	
22	LF15D/22	Cover	1	
23	M6X25B	Bolt M6X25	8	



**LF135T**

**LF135 & LF135T GEARBOX**

Quantities are for the whole machine. Prices are excluding VAT.

DRG NO.	PART NO.	DESCRIPTION	QTY	RETAIL PRICE PER SINGLE ITEM
1	LF135/1	Castle Nut	1	
2	LF135/2	Bolt Washer	1	
3	LF135/3	Snap Ring	1	
4	LF135/4	Protective Washer	2	
5	LF135/5	Double Lip Seal	1	
6	LF135/6	Snap Ring	1	
7	LF135/7	Snap Ring	1	
8	LF135/8	Shim	1	
9	LF135/9	Bearing	2	
10	LF135/10	Spacer	1	
11	LF135/11	Pinion Shaft	1	
12	LF135/12	Casing	1	
13	LF135/13	Plug	2	
14	LF135/14	Double Lip Seal	1	
15	LF135/15	Bearing	1	
16	LF135/16	Shim	1	
17	LF135/17	Gear (22 Teeth)	1	
18	LF135/18	Shaft	1	
19	LF135/19	Parallel Key	1	
20	LF135/20	Shim	1	
21	LF135/21	Bearing	1	
22	LF135/22	O-Ring	1	
23	LF135/23	Cover	1	
24	LF135/24	Snap Ring	1	
25	LF135/25	Shaft	1	
26	LF135/27	Bearing	1	
27	LF135/26	Cover	1	