

Operator Manual & Parts List

MAJOR RANGE OF

FLAIL MOWERS

MJ22-100, MJ22-140 & MJ22-180

MJ24-230 & MJ24-280

MJ26-230 & MJ26-280



Head Office

Major Equipment Intl. Ltd.
Ballyhaunis,
Co. Mayo,
Ireland.

Tel.: +353 (0) 9496 30572
Fax: +353 (0) 9496 30788
Email: info@major-equipment.com

UK Office

Major Equipment Ltd.
Major Industrial Estate,
Middleton Rd.,
Heysham,
Lancs.
LA3 3JJ

Tel.: +44 (0) 1524 850 501
Fax: +44 (0) 1524 850 502
Email: ukinfo@major-equipment.com

NETHERLANDS & GERMANY OFFICE

Major Equipment Intl. Ltd.
Postbus 29,
NL-7700 AA ,
Dedemsvaart,
Nederland.

Tel: +31 (0) 6389 19585
Email: euinfo@major-equipment.com

Web: www.major-equipment.com



Find us on FACEBOOK
MAJOR MACHINERY



View our channel
MAJOREQUIPMENT

Disclaimer

While every effort has been made in the production of this manual to ensure that the information contained herein is full and correct, Major assumes no responsibility for errors or omissions.

Major reserves the right to modify the machinery and the technical data contained within the manual without prior notice.

Further to this, Major assumes no liability for any damages which may result from the use of the information contained within this manual.

Contents

Introduction

Thank you	1
Using Your Operator's Manual	1
Safety Issues	1

Product Identification

Machine Serial Numbers	1
Register Your Product and Warranty Online	1

Safety

Machine Safety Labels	2
Safe Operation	3
Workstation	4
Regulations for use of the transmission	4
PTO Shaft Safety	4
Driving Safely on Public Roads	5
General safety instructions	5
General description of the machine	6

Operating the Machine

Position of the machine on the ground	9
Working position and adjustment	10
Front mounted MJ26 connection	11

Maintenance

Replacement of the blades and hammers	13
P.T.O. Maintenance	14
Troubleshooting	15

Spare Parts

MJ22 Frame/Rotor/Transmission	16
MJ24 Frame/Rotor/Transmission	18
MJ26 Frame/Rotor/Transmission	20
MJ24 & MJ26 Left Rotor Bearing (3000005206)	22
MJ24 & MJ26 Right Rotor Bearing (3000005205)	22
MJ24 & MJ26 Roller Bearing (3000005403)	22
MJ24 Skid Assembly (3000005505)	23

EEC certificate of conformity for machines

(conforming to Directive 98/37/EEC)

Company: Major Equipment Ltd.
Address: Coolnaha,
Ballyhaunis,
Co. Mayo,
Ireland.
Tel. +353949630572
Fax +353949630788


declares in sole responsibility that the product:

FLAIL MOWER

When properly installed, maintained and used only for it's intended purpose, complies with all the essential Health & Safety requirements of:

- **THE SUPPLY OF MACHINERY (SAFETY) REGULATIONS 2008.**
- **S.I. No. 299 of 2007**, Safety, Health and Welfare at Work (General Application) Regulations 2007 **(Ireland)**.
- **Health & Safety at Work, etc. Act 1974 (c.37) (UK)**.
- **EN ISO 14121-1: 2007** "Safety of machinery. Principles for risk assessment".
- **EN 745** - Agricultural Machinery - Rotary Mowers and Flail Mowers - Safety.
- **EN ISO 13857** - Safety of machinery: Safety distances to prevent hazard zones being reached by upper and lower limbs.
- **89/392/EEC, 91/368/EEC, 93/44/EEC, 93/68/EEC, EN292, EN 704**

I certify on behalf of Major Equipment Int. Ltd., that this machine when properly installed and operated correctly, complies with all the essential Health & Safety requirements of all legislation referred to above.

Signature : 
Managing Director

Date 12/01/2012

Introduction

Thank you

We appreciate having you as a customer and wish you many years of safe and satisfied use of your machine.

Using Your Operator's Manual

This manual is an important part of your machine and should remain with the machine when you buy it. Reading your operator's manual will help you and others avoid personal injury or damage to the machine. Information given in this manual will provide the operator with the safest and most effective use of the machine.

Sections in your operator's manual are placed in a specific order to help you understand all the safety messages so you can operate this machine safely. You can also use this manual to answer any specific operating or servicing questions.

Safety Issues

Your manual contains special messages to bring attention to potential safety concerns, machine damage as well as helpful operating and servicing information. Please read all the information carefully to avoid injury and machine damage.

Product Identification

Machine Serial Numbers

If you need to contact MAJOR or your MAJOR dealer for information on servicing or spare parts, always provide the product model and serial numbers.

We suggest that you record your machine details below:

Model No: _____

Serial No: _____

Date of Purchase: _____

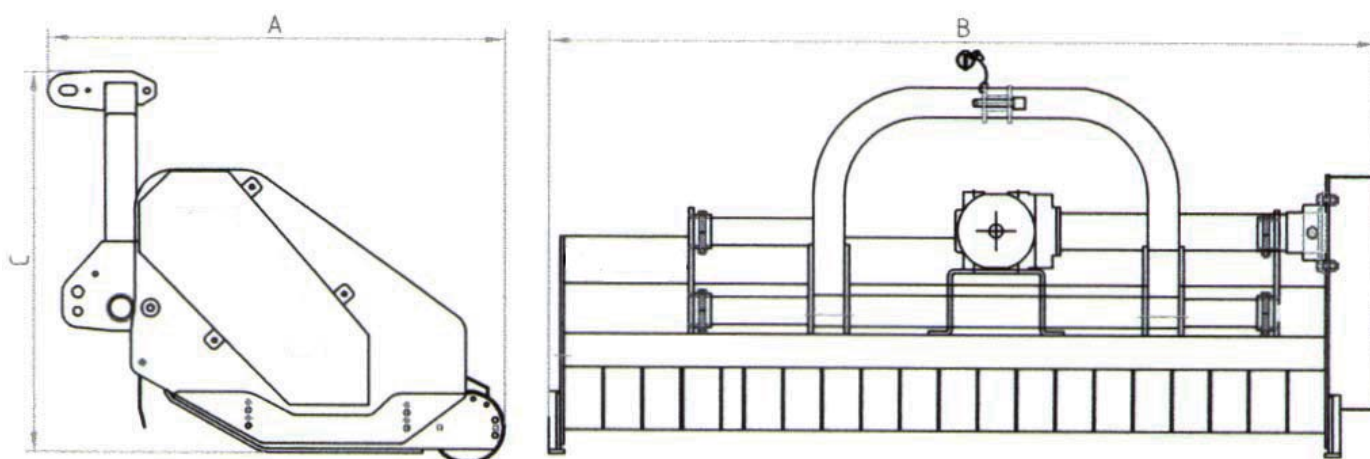
Dealer Name: _____

Dealer Telephone: _____

Register Your Product and Warranty Online

To register your product through the Internet, simply go to the Support section on www.major-equipment.com. Completing the information, either online or with the product warranty card, will ensure the customer that their product receives all post sales service and important product information.

Product Specifications



Model	MJ22-100	MJ22-140	MJ22-180	MJ24-230	MJ24-280	MJ26-230	MJ26-280
Working width (mm)	930	1330	1780	2245	2740	2245	2740
A (mm)	858	858	858	1156	1156	1200	1200
B (mm)	1070	1470	1920	2472	2967	2560	3030
C (mm)	798	798	798	970	970	1060	1060
Weight (kg)	220	260	300	685	800	690	810
PTO (RPM)	540	540	540	540	540	540	540
Required power (HP)	20-30	35-45	55-60	70-80	90-100	70-80	90-100
No. of Blades	28	40	52	52	60	52	60
No. of Hammers	14	20	26	26	30	26	30

Safety

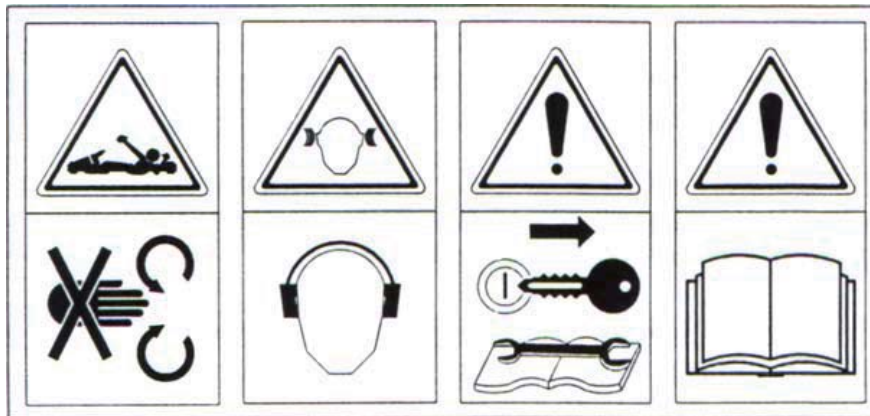
Machine Safety Labels

The machine safety labels shown in this section are placed in important areas on your machine to draw attention to potential safety hazards.



On your machine safety labels, the words DANGER, WARNING, and CAUTION are used with this safety-alert symbol. DANGER identifies the most serious hazards.

The operator's manual also explains any potential safety hazards whenever necessary in special safety messages that are identified with the word, CAUTION, and the safety-alert symbol.



Safe Operation

The MAJOR Shredder is designed to operate at 540 RPM. Ensure tractor PTO output is set at 540 RPM. The MAJOR Shredder must only be used for cutting grass. Moreover, it must only be used with a suitable tractor (see product specifications) and driven by an adequate drive-line by the tractor PTO. All other use is strictly prohibited.



Users should become thoroughly familiar with the contents of this manual before using, servicing and mounting the implement to the tractor and all other pertinent operations. Never wear jewellery, loose clothing such as ties, scarves, belts, unbuttoned jackets or dungarees with open zips which could become caught up in moving parts.



Always wear approved garments complying with accident prevention provisions such as non-slip shoes, ear muffs, goggles and gauntlets. Wear a jacket with reflecting stickers if the implement is used near public highways.



Consult your retailer, the Labour Health Service or your nearest equivalent authority for the information about the current safety provisions and specific regulations with in order to ensure personal safety.



ALWAYS DISENGAGE PTO, SWITCH OFF THE TRACTOR ENGINE AND ENGAGE THE PARKING BRAKE BEFORE MAKING ADJUSTMENT TO THE MACHINE.



NEVER PLACE LIMBS UNDER THE MACHINE WHILE ROTORS ARE TURNING. ROTORS CAN REMAIN TURNING FOR UP TO 1 MINUTE AFTER DISENGAGING PTO.

Workstation

The operator must remain seated while working the machine. When the wings need to be raised and lowered the operator must leave the tractor. Always ensure the PTO has been turned off and the parking brake applied before leaving the tractor cab. The operator must always apply the parking brake, and turn off the engine before leaving machine or carrying out maintenance.

NEVER OPERATE THE HYDRAULICS WITH THE TRACTOR SWITCHED OFF

Regulations for use of the transmission

The transmission to the gearboxes is protected throughout the machine by both PTO shafts and bolt down covers. All guarding should be kept efficient and in good condition. If the condition is poor, the guarding should be renewed before the implement is used.

UNLESS IT IS CORRECTLY PROTECTED THE TRANSMISSION COULD CAUSE DEATH SINCE IT CAN CATCH ON PARTS OF THE BODY OR CLOTHING

Ensure retaining chains are correctly anchored on all PTO shafts, preventing them from turning. Ensure drive line can turn easily within the shield. Keep spline grooves clean and greased so that PTO shaft can connect easily. Besides being described in this manual, the method by which the PTO shaft is connected to the tractor must be checked out with the instructions in the tractor manufacturer's manual.

PTO Shaft Safety

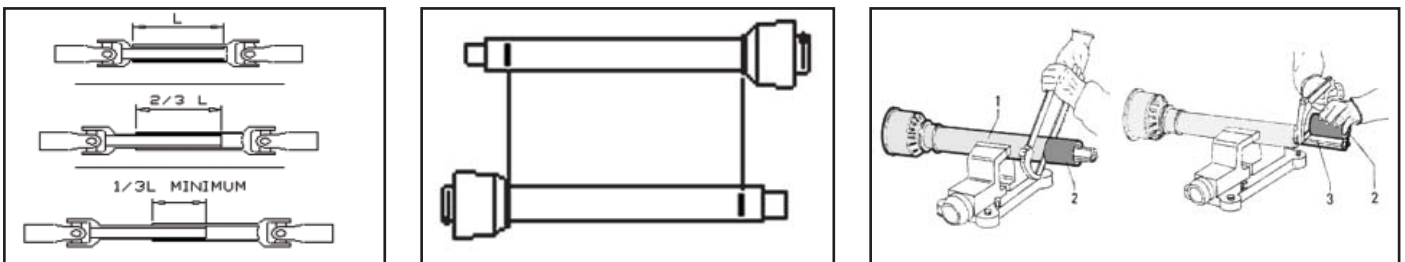
MAX PTO INPUT 540 R.P.M. Contact your nearest dealer or a specialised retail outlet if the PTO must be replaced with a longer one, since this must belong to the same power category and possess the same characteristics. An unsuitable PTO could easily break.

The tractor PTO shaft length may be altered to suit the individual tractor model. When the machine is in operation, the PTO shaft should have a minimum $1/3$ engagement as shown in the diagrams. After the topper has been hitched to the tractor, it should be checked in various positions that the drive line is the correct length. If the PTO is too short and tends to slip out of place, it must be replaced with a longer one.

If the PTO shaft is too long, it should be shortened in the following way:

- Set the machine at a minimum distance from the tractor, then brake the tractor and switch off the engine.
- Separate the two halves of the PTO. Insert the female part into the tractor PTO and the male part into the topper PTO, checking that the position is correct by means of the fixing pins.
- Line up the two halves of the PTO together, keeping them parallel.
- Using a felt tip pen, match mark the place where the two halves must be shortened as shown.
- First cut shield "1" and use part "2" as a reference to cut the splined shaft.
- Proceed in the same way for the second half.
- Trim and chamfer the two cut ends of the PTO and clean off all swarf and shavings.
- Grease the two profiles and join the two halves of the PTO together.
- Mount the PTO shaft and check that its length is correct as before.

The shaft must not reach the end of the tube or project from this. Ensure the PTO does not bottom when turning.



Driving Safely on Public Roads

Check the local Highway Code regulations before driving the tractor on public highways with a towed implement. Check the reflectors, hazard flashers and/or projecting load indicators are installed when required and efficient. These indicators must be installed correctly and easily seen by the drivers of other vehicles.

Bystanders must not be allowed to lean against or climb onto the machine during transport or while working. Do not allow bystanders to ride on the machine.



MAXIMUM TRANSPORT SPEED MUST NOT EXCEED 30 km/hr (18 MPH)

General safety instructions

Please read carefully this section in order to avoid accidents:

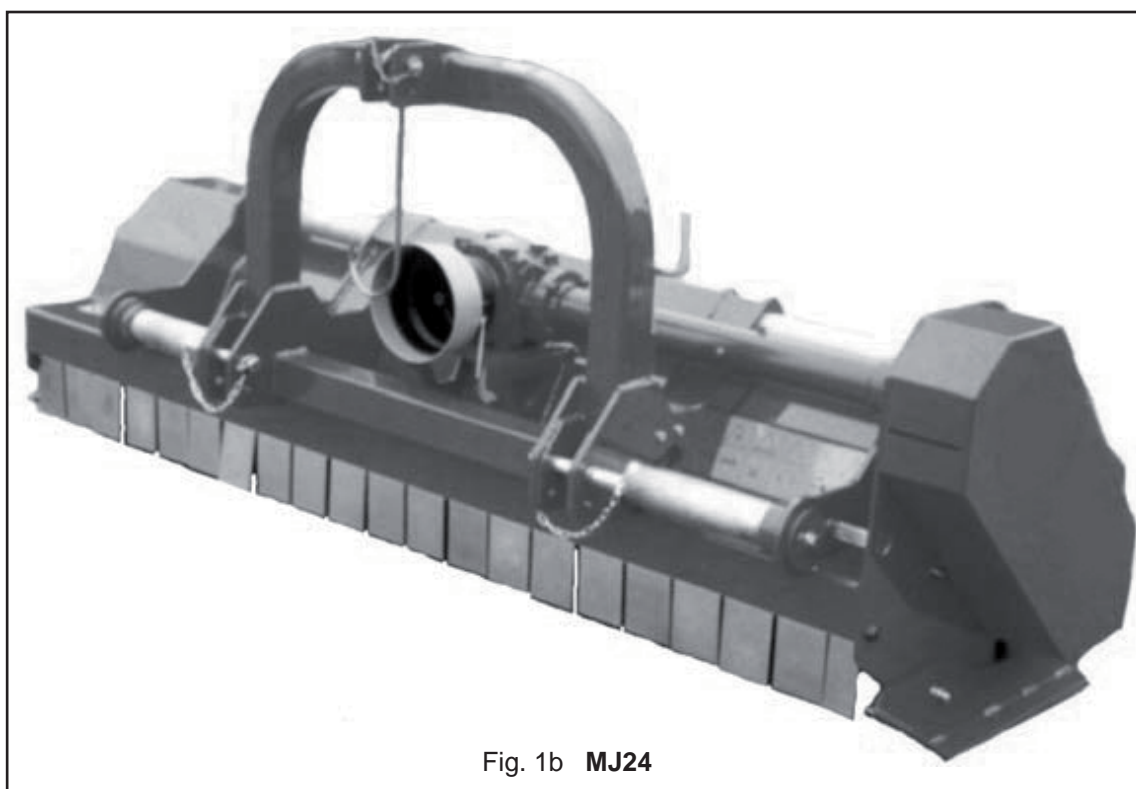
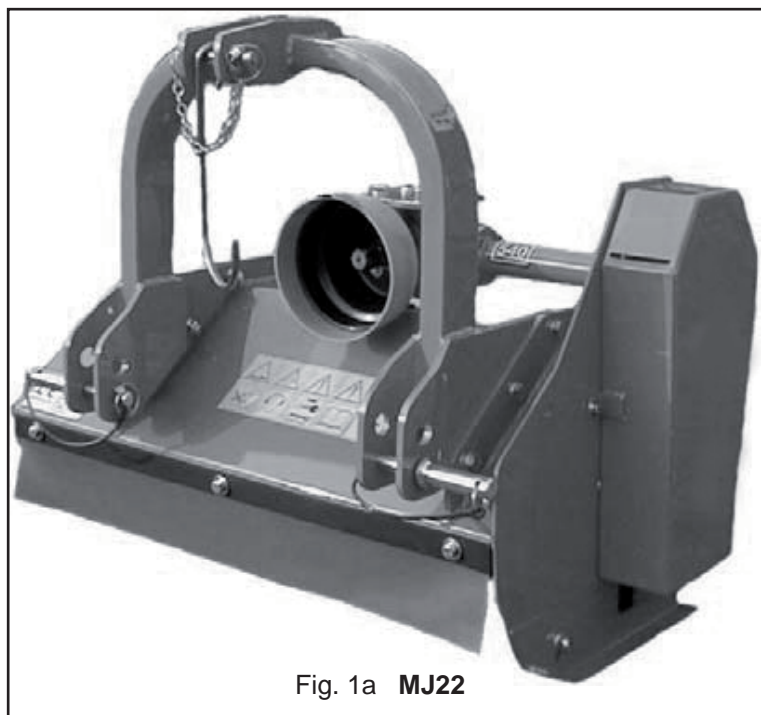
- 1) Besides reading the operators manual, it is necessary to follow the general instructions relevant to safety, as prescribed by the Country Laws for the users of the agricultural machines.
- 2) Follow the instructions given by the stickers on the machines, especially the stickers relevant to safety.
- 3) Operate the machine only if it lies on the ground and it is parallel to it.
- 4) Never exceed the rpm indicated on the machine(540 rpm).
- 5) Fasten the shaft cover by means of the chains to avoid the rotation of the cover of the shaft.
- 6) Lower the machine to the ground before you operate it and check that nobody is in the working area of the machine.
- 7) Before beginning working, make sure that all the safety devices are correctly fitted and efficient before working.
- 8) Be careful when you work on stony fields and make sure that nobody stands close the working machine.
- 9) Before any maintenance, make sure that all the rotating devices are still and turn off the engine of the tractor, remove the key and apply handbrake.
- 10) During the transport on the roads, please observe the Highway Code Rules.
- 11) Be careful when connecting and disconnecting the machine.
- 12) Before leaving the tractor, stop the machine and lower it down on the ground. Turn off the engine of the tractor, remove the engine key and apply handbrake.
- 13) Before connecting or disconnecting the machine with the 3 point linkage lock the hydraulic raising device of the tractor to avoid it being activated.
- 14) Check the maximum allowed weights for the 3 point linkage connection.
- 15) The assembly and disassembly of the shaft shall be done only if the PTO is disconnected.
- 16) Before switching on the PTO make sure that the power and the rotation of the PTO of the tractor are suitable for the machine.
- 17) Never connect the PTO when the engine is turned on.
- 18) Before connecting the PTO make sure that nobody stands in the working area.
- 19) Nobody shall stand close the PTO when it is connected.
- 20) Before approaching the machine, check that it is completely still and that the engine of the tractor is turned off and the PTO is disconnected.
- 21) Periodically check the correct tightening of the screws and nuts, if necessary tighten them.
- 22) When the machine is raised for maintenance, make sure that the machine is safely and suitably supported. If repairs are necessary, please ask to the authorised workshops.
- 23) Dispose of lubricants respecting the laws which protect the environment.

General description of the machine

The shredder mainly consists of a steel frame which is the support for all the other components of the machine; it is designed to guarantee a perfect chopping of the product without having to use excessive power and complying with safety regulations.

The machine is designed to be installed on the rear part of the tractor. The machine must be connected to the tractor by using a 3 point linkage connection. The displacement of the connecting device could be manual or mechanical.

Inside the main body there is a rotor which is supported by two high resistance bearings and it is operated by transmission belts. The rotor is dynamically balanced to obtain a correct rotation with no vibrations. The rotor is equipped with a blades or hammers, which assure the perfect chopping of the product and good ventilation.



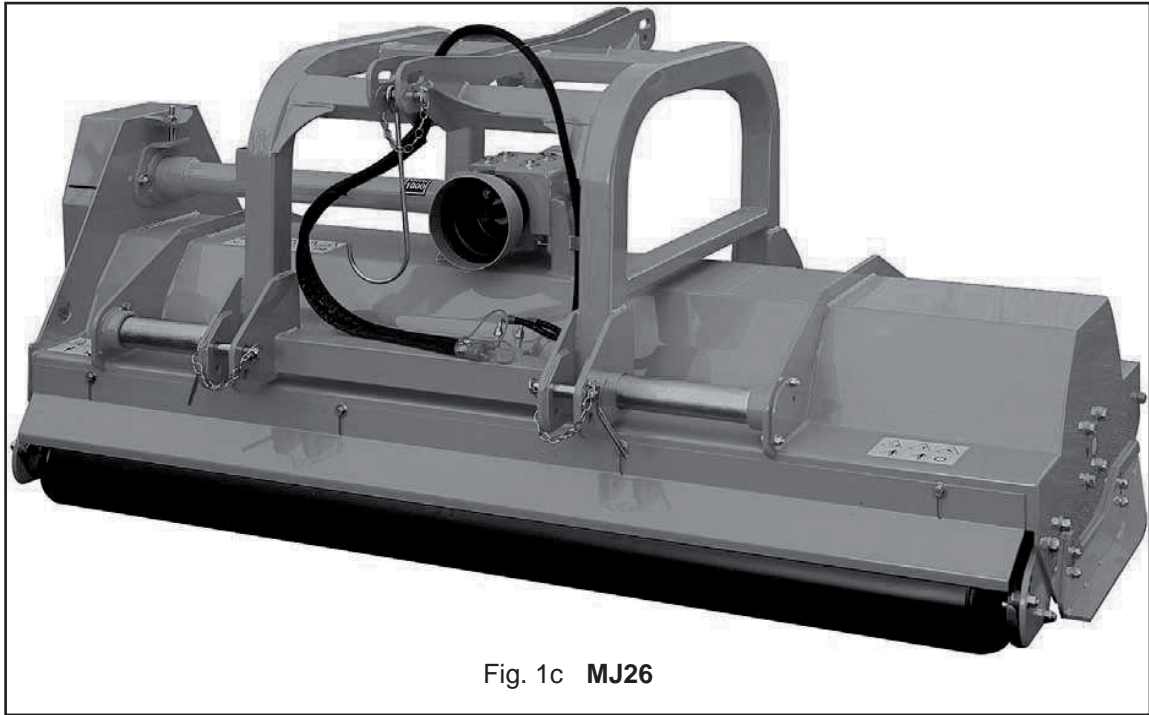


Fig. 1c MJ26

1	Transmission guard
2	Gear box
3	3 point linkage
4	PTO connection
5	Frame
6	Skid
7	Scraper
8	Roller

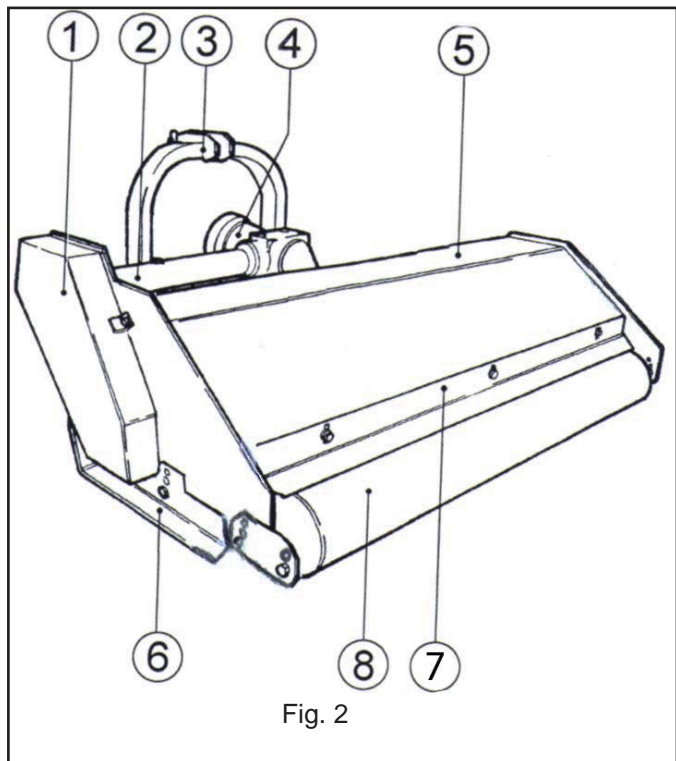


Fig. 2

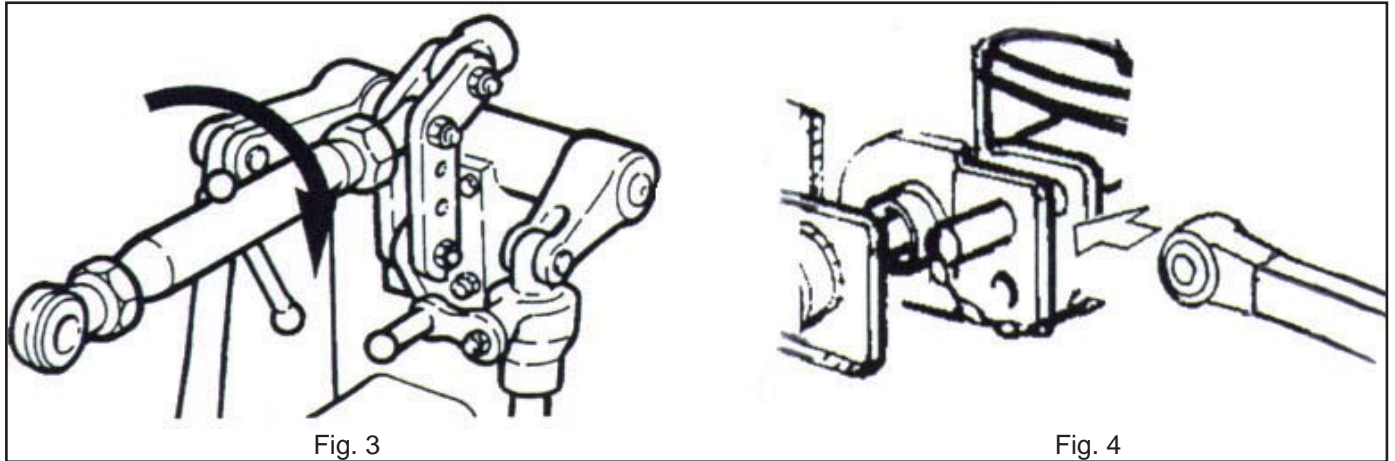
Operating the Machine

Installation of the machine

As the connecting arms of the tractors have different lengths, check the suitable position of the machine when connected with the tractor by lengthening or shortening the upper connection arm of the tractor (Fig. 3). If necessary, shorten the shaft following the instructions in this manual.

The connection of the tractor to the machine shall be done as described in Fig. 4.

The shredder models 160 – 180 – 200 – 230 can be connected to the tractors by using CAT II 3 point linkage connection. The models 250 – 280 – 300 can be connected to the tractors by using CAT III 3 point linkage connection.



Please follow the instructions below when connecting the shredder to the tractor:

- 1) Put the raising bars inside the connections of the shredder.
- 2) Insert the raising bars in the pins of the shredder and lock them with the suitable connection pins.
- 3) Insert the shaft and check that it is correctly locked.
- 4) Lock the bars of the raising devices with the suitable chains and tighteners.
- 5) Connect the machine by using the 3 point linkage connection and check that the machine lies parallel to the ground.
- 6) Connect hydraulics.
- 7) Check that the tractor has the suitable power to assure the correct operation of the machine and the correct control while working or during the transport on the road.

Transport position

During the transport and any time the machine shall be raised, the raising device shall be adjusted to assure that the machine is 35cm over the ground (see Fig. 5).



Before raising the machine wait until the transmission and the rotor are completely still



During the transport of the shredder the PTO shaft must be disconnected.

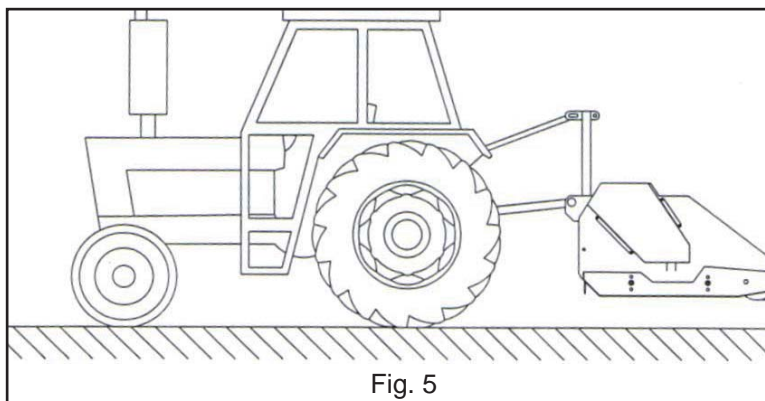


Fig. 5

Position of the machine on the ground

Before starting working, check the position of the blades respect to the ground. If the blades touch the ground, adjust the levelling and support roller and the side skids.

Adjustment of the levelling and supporting roller

To adjust the levelling and supporting roller, please proceed as follows (Fig. 6):

- 1) Loosen the locking screws "a", positioned at the ends of the levelling roller;
- 2) Remove the locking screws "a1";
- 3) Loosen the screws "b" of the scraper;
- 4) Adjust the height of the roller and check that the roller is parallel to the ground;
- 5) Reach the correct position, insert and tighten the screws "a1";
- 6) Adjust the position of the scraper in order it is placed 2mm far from the roller and tighten the screws.

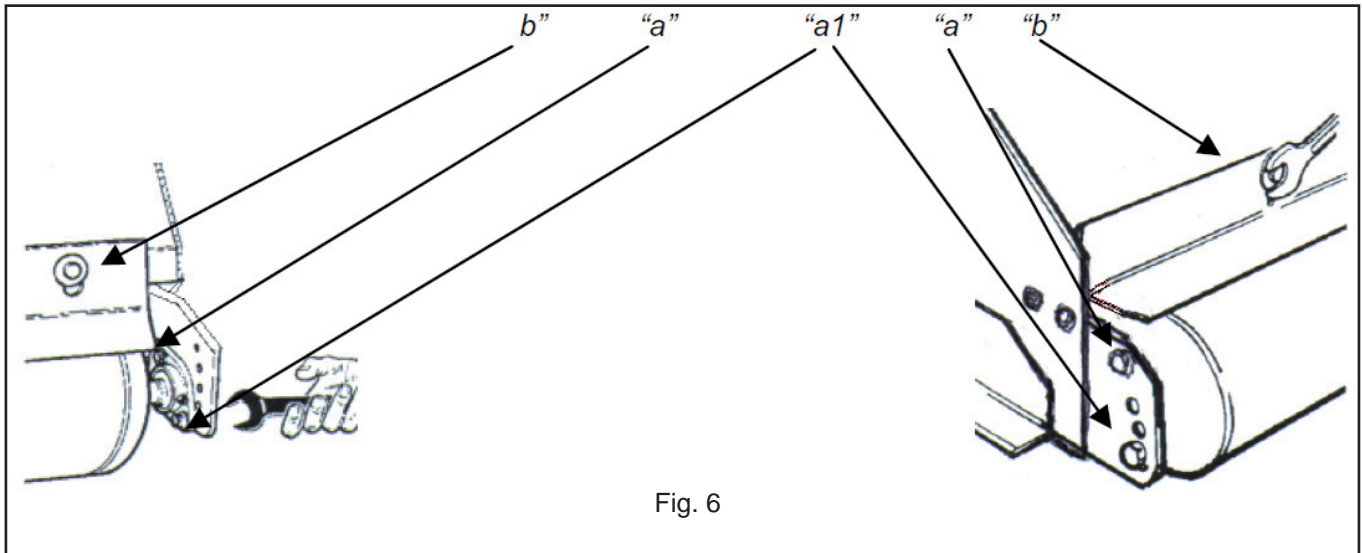


Fig. 6

Before making any adjustments to the machine, turn off the tractor engine, remove the key and apply the handbrake. Make sure that the machine is parallel to the ground (Fig. 7).

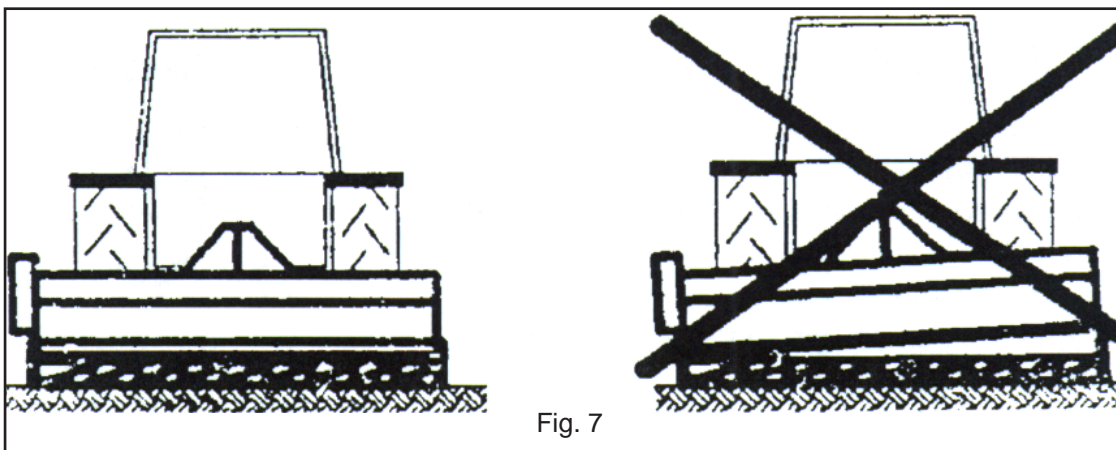


Fig. 7

Adjustment of the skids

Adjust the position of the skids to avoid hammers or blades hitting the ground (see Fig. 8). The correct adjustment ensures that blades or hammers do not touch the ground even if it is not regular. If the above mentioned indications are not followed the blades or hammers can wear quickly and the transmission belts can be damaged.

- 1) Remove the locking screws of the skids (see Fig. 8).
- 2) Adjust the height of the skids to reach the lower point of the blades and hammers.
- 3) When the correct position is reached, fasten the screws.
- 4) Check that the skids are at the same height of the frame of the machine.

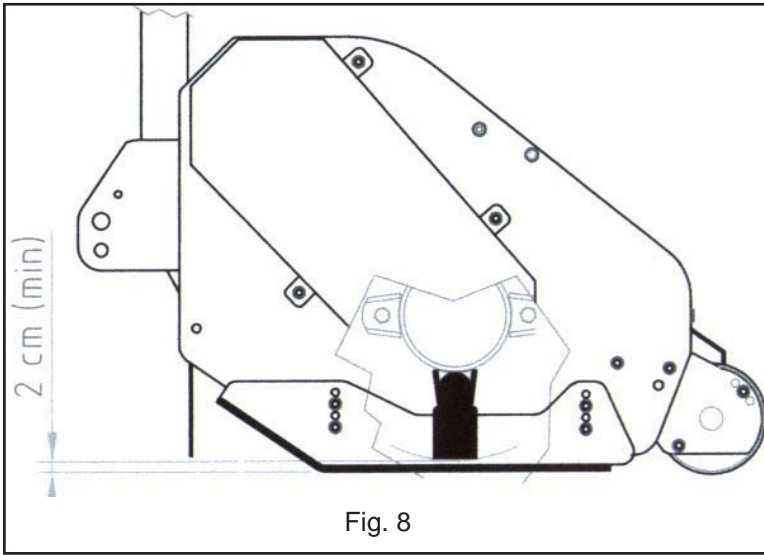
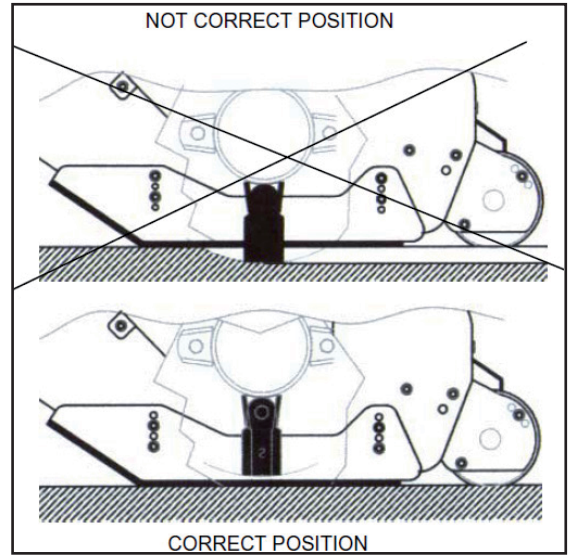


Fig. 8



Adjustment of the 3 point linkage

The machine shall be perfectly parallel to the ground to obtain a correct chopping of the product. The adjustment shall be done by operating the top link (see Fig. 9).

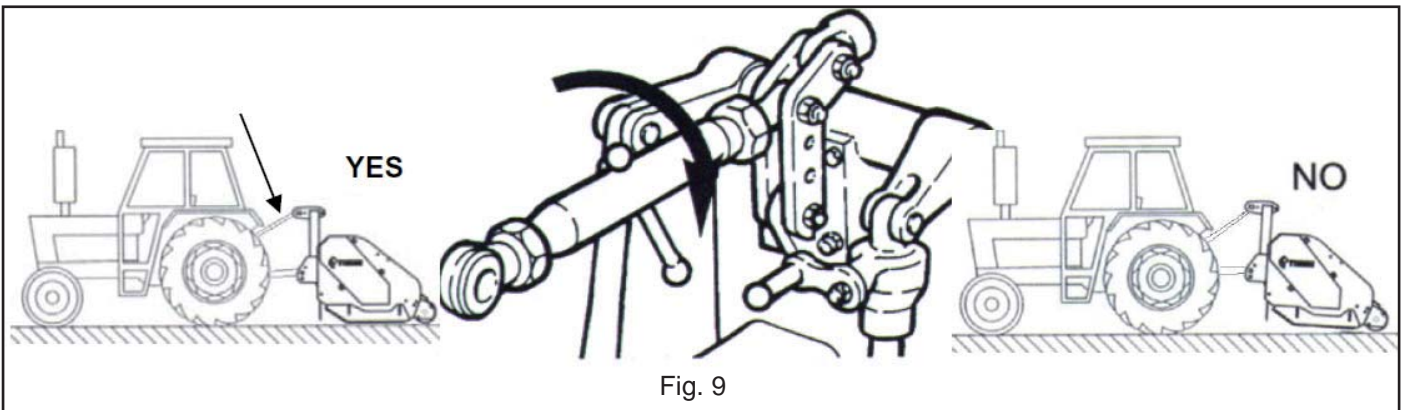


Fig. 9

Working position and adjustment

The shredder is fitted with a MOBILE or MOVABLE 3 point linkage connection with 3 configurations:

- 1) Version with 2 position connection, fixed with screws and nuts;
- 2) Version with movement screw with manual progressive operation;
- 3) Version with hydraulic movement operated by a hydraulic cylinder powered by the tractor. The tractor operates the cylinder by means of the lever of the hydraulic distributor.

To move the connection frame remove the screws "y", move the linkage frame to the alternative position and lock screws "y" carefully (see Fig. 10).

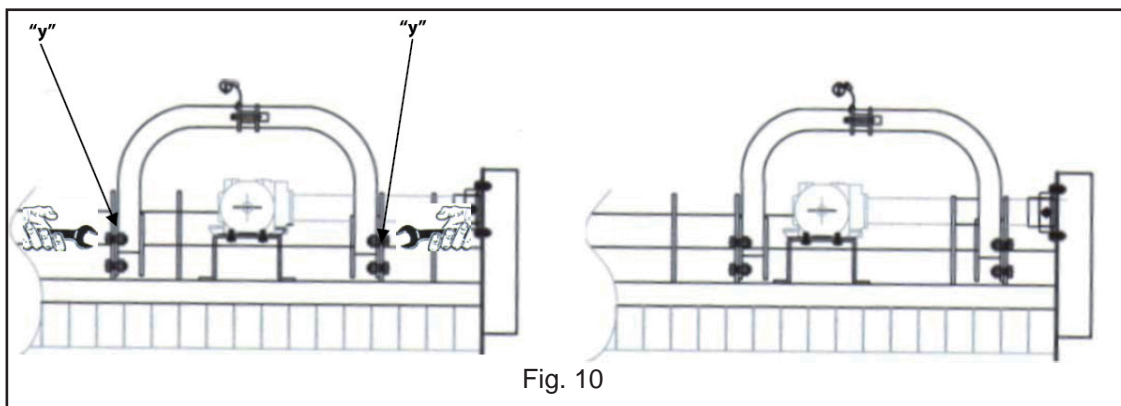
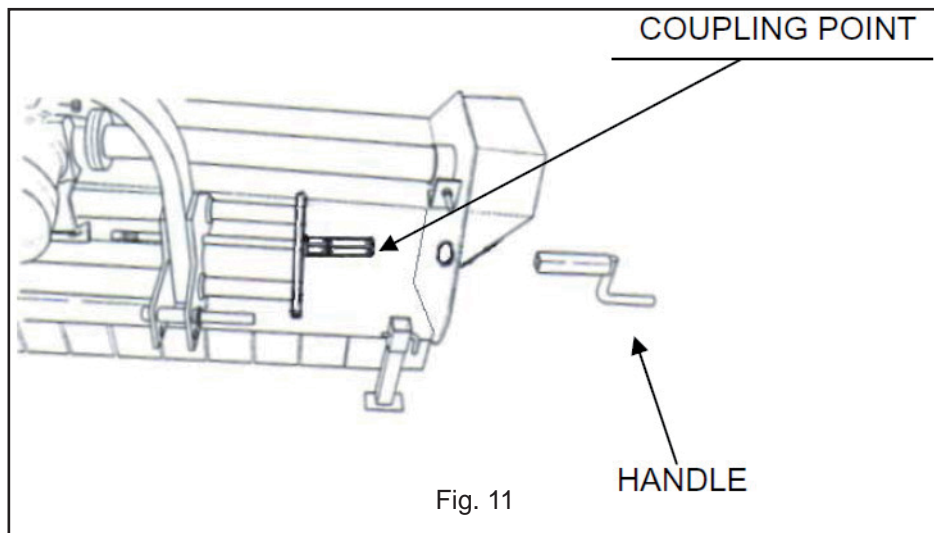


Fig. 10

Movable screw connection (manually operated)

When moving the shredder by means of the manually operated screw, please operate as follows:

- insert the handle into the coupling point (see Fig. 11)
- rotate the handle to obtain the required displacement.



Hydraulic movable connection

The hydraulic displacement guarantees the best performance of the three versions of the side displacement of the shredder.

In order to adjust the position of linkage frame please follow the instructions below:

- 1) Turn off the engine discharge the pressure trapped inside the system by moving the two distributor operating levers in the two directions;
- 2) Connect the hydraulic pipes of the shredder into the couplings of the tractor;
- 3) Turn on the engine of the tractor;
- 4) Use the operating lever of the hydraulic device to move the machine.

Precautions to be taken while working with the shredder

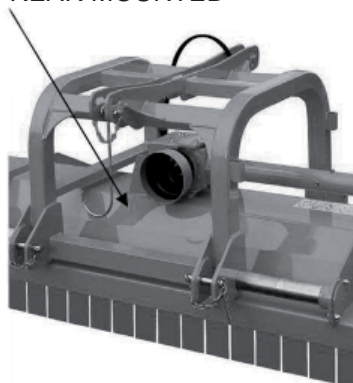
- 1) Do not operate the shredder when you are tired;
- 2) Before starting shredding, make sure that the area is clear of people or animals.
- 3) Before starting adjusting the machine, it is mandatory to disconnect the PTO, to turn off the engine of the tractor, apply handbrake and wait for the shredder to become still and placed on the ground.
- 4) It is mandatory to read all the safety requirements and the operator's manual of the machine.
- 5) If you are not sure how to use the shredder, please contact the manufacturer of the machine.



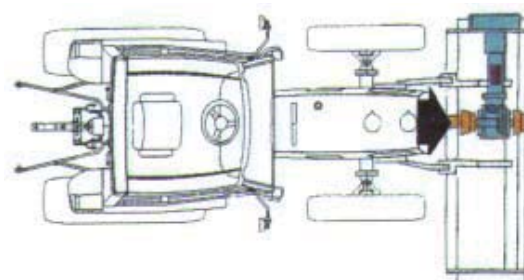
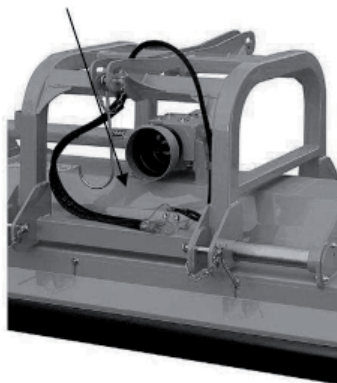
While operating the machine do not exceed the speed of 10 km/h

Front mounted MJ26 connection

REAR MOUNTED



FRONT MOUNTED



Maintenance

Any time you perform maintenance the following instructions are mandatory:

- Disconnect the PTO

- Put the machine down onto the ground

- Never stand behind the machine when the tractor is running.

1) With the whole machine as level as possible, check the oil level in the Primary Gearbox, top up as required with SAE EP90 gear oil through the oil filler plug indicated (Fig. 12).

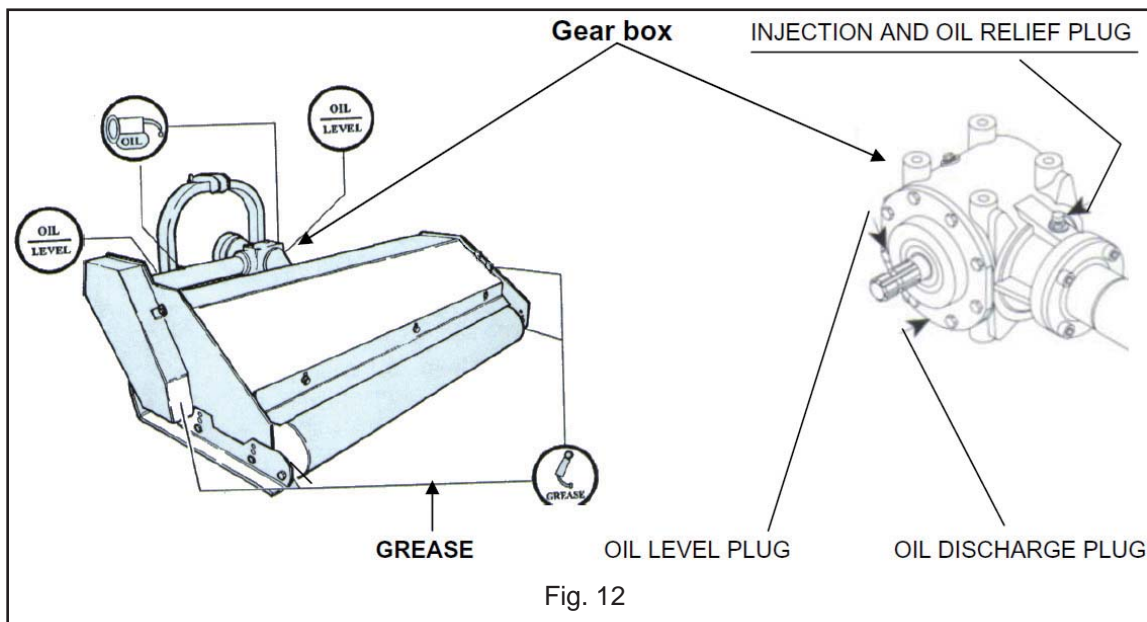
2) After every 50 working hours, grease through grease nipples the supports of the rotor.

3) After every 50 working hours, grease through grease nipples the supports of the rear rotor.

4) After every 90 working hours, the machine shall be checked by the authorised workshops. The complete machine and the safety protections shall be checked.



Always disengage PTO, Switch off tractor engine and engage the parking brake before making adjustment to the machine



Adjustment and replacement of the belts

The belts shall be checked and adjusted after the first 5 working hours. The next check of the belt tension shall be done after every 50 working hours.

Operations for the removal and adjustment of the belts:

1) Remove the guard which protects the belts;

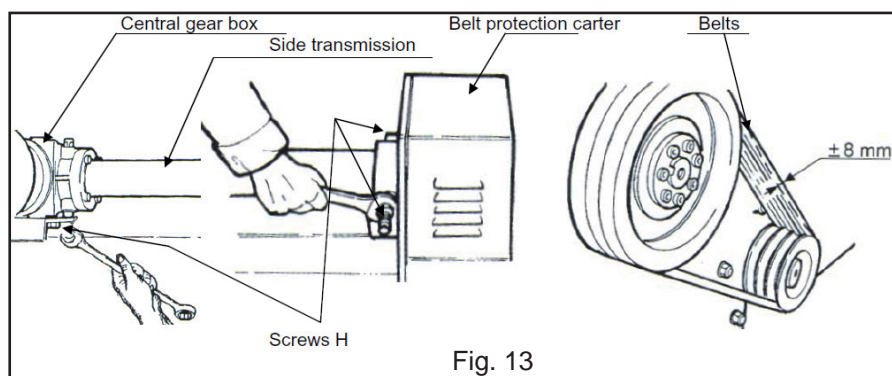
2) Loosen the locking bolts which lock the gear box and the side transmission (screws H).

3) The belts must be removed one by one and be replaced by a new kit.

4) Check the tension of the belts at the central point; apply a force of about 9kg at the centre to obtain a deviation of about 8mm (see Fig. 13).

5) Tighten the locking screws of the gear box checking that the axis is parallel to the machine. If the transmission is not parallel to the machine, the belts wear out quickly.

6) Correctly assemble the transmission and fasten the guard to protect the belts.



Replacement of the blades and hammers

After every 100 working hours, check the condition of blades or hammers. If some blades or hammers are worn or broken or missing, the complete blade or hammer kit shall be replaced. If only some blades or hammers are replaced, the others could unbalance the rotor during the operation of the shredder and high vibrations could arise and damage the machine or the rotor.

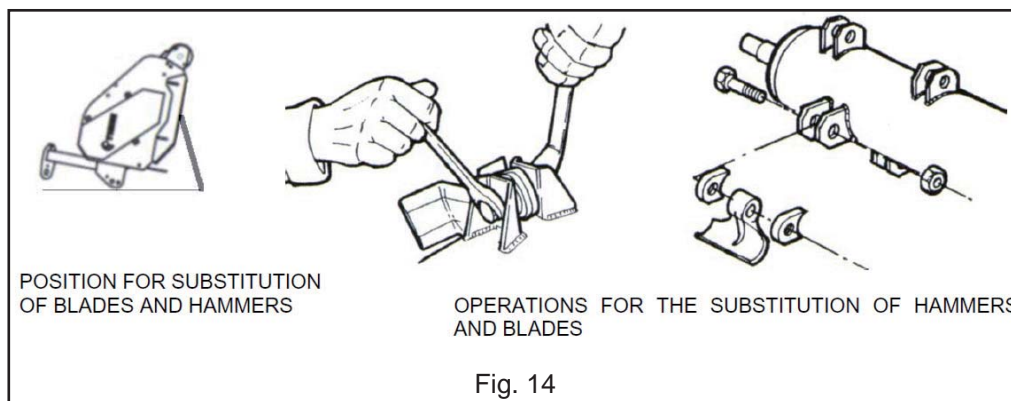
IT IS VERY IMPORTANT TO CHECK ALSO IF THE SCREWS ARE WORN, IF THEY ARE WORN IT IS MANDATORY THAT THEY ARE SUBSTITUTED BY MANUFACTURER'S ORIGINAL SCREWS.



Do not replace the blades or the hammers by rising the shredder by means of the tractor: it is extremely dangerous for your and other people's safety.

In order to change blades or hammers, please follow the instructions below:

- 1) Disconnect the machine from the tractor.
- 2) Turn the machine on the side on a perfectly plain ground.
- 3) Replace the blades and hammers as shown in the assembly Fig. 14. Carefully tighten the screws.
- 4) When the blades or hammers are replaced, carefully lower the machine.



P.T.O. Maintenance

The machine must always be disconnected from the tractor before any cleaning, lubricating and servicing operations can be carried out. Maintenance must be carried out by qualified personnel

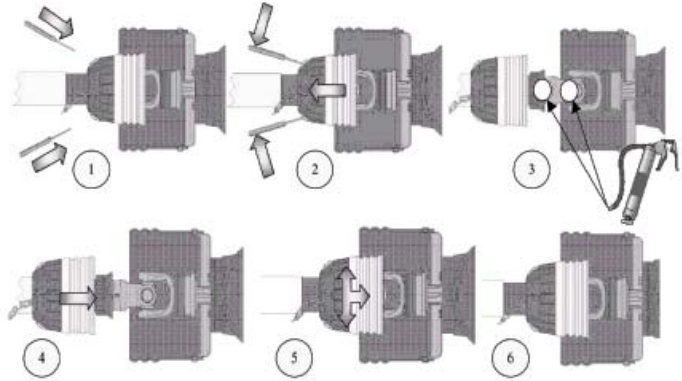
If emergency operations are required whilst the machine is connected to the tractor, switch off the engine, engage the parking brake and disengage the PTO.

Good, regular maintenance and correct use are if the topper is to remain safe and long lasting.

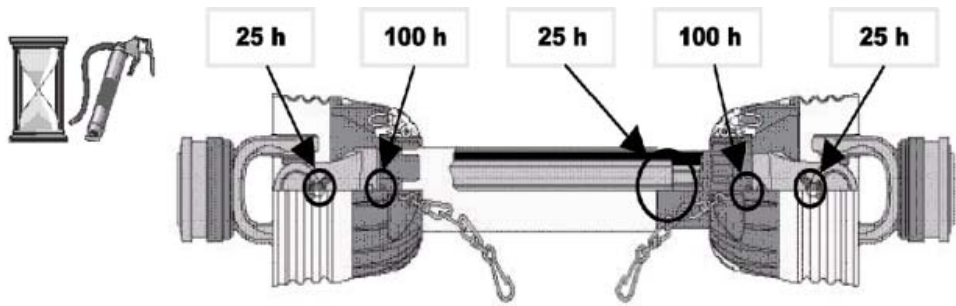
PTO Shaft Maintenance

Guard Removal and Yoke End Greasing

1. Prise back locking tabs
2. Pull back PTO Guard
3. Grease points as shown
4. Push Guard into position
5. Click into place
6. Tie check chain



PTO Guard Greasing Intervals

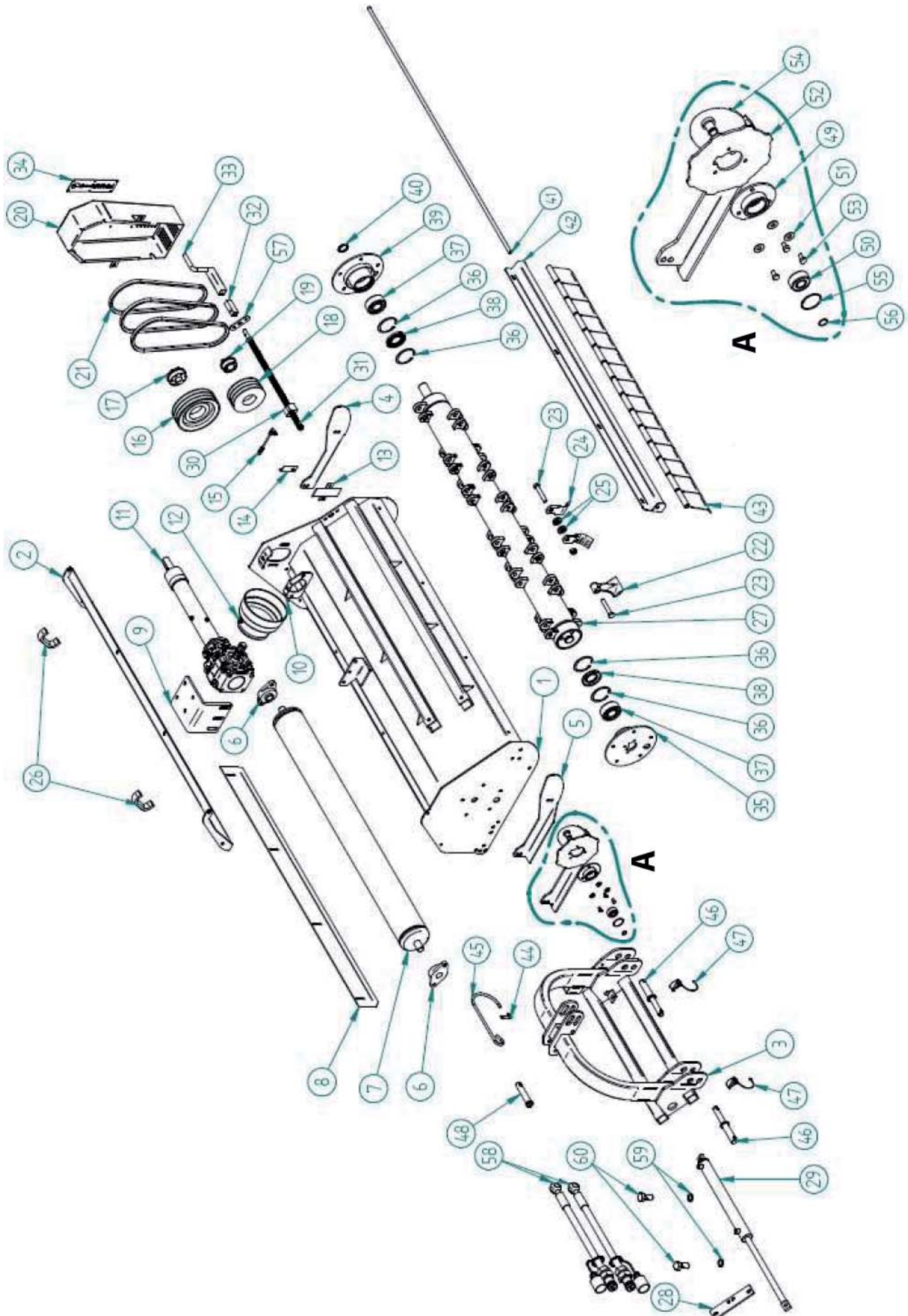


Troubleshooting

Fault	Cause	Remedy
Leaves a streak of uncut or partially cut grass	Carrier RPM too low	Use correct PTO speed
	Ground speed too fast	Reduce ground speed by shifting to a lower gear
	Possible build-up materials under shredder	Clean the machine
	Blades mounted incorrectly (cutting edge against direction rotation)	Change blades so that cutting edge is facing correct rotation.
Material discharges from machine unevenly; bunches of material along with swath	Material too high and too much material	Reduce ground speed but maintain tractor PTO or make two passes over material. Raise mower for the first pass and lower to desired height for the second and cut a 90 degree angle to first pass
Gearbox overheating	Low on lubricant	Fill to proper level
	Improper type lubricant	Replace with proper lubricant
Flails are scalping the ground	Machine too low	Raise the machine
	Field is ridged	Cut field at a different angle
	Field is too wet	Stop and wait until it is dried
Shredder will not cut.	Shear bolt sheared	Install new shear bolt
Flails wear too fast	Cutting in sandy conditions	Increase cutting height
	Cutting in rocky conditions	Increase cutting height
	Flails hitting ground	Increase cutting height
Machine seems to require excessive power	Advancing into grass too rapidly	Reduce forward travel speed
	Hitting ground	Raise the machine
	Worn or dull flails	Sharpen or replace flails
	Tractor not large enough	Use larger horsepower tractor
	Belts are torn	Replace belts
Excessive vibration	Check gearbox bolts	Tighten if loose
	Wires around the rotor	Clean the rotor
	Flails broken	Replace flails in sets
	New flail or bolts matched with worn flails or bolts	Replace blades or bolts in sets
	Damage to the rotor or the driveline of the shredder	Phase the driveline. Verify the balance of the rotor of the machine by authorised workshop.
	Worn bearing	Replace bearings
Noisy machine	Worn bearing	Replace bearings
	Low oil in gearbox	Check level and add oil
	Loose Parts	Check all bolts are fully tightened
	Wrong PTO rpm rate	Check PTO rate & adjust as necessary
	Rotors bent / broken	Replace bent or missing blades
	Bent PTO shaft	Check PTO shafts are aligned correctly
Check output shaft on gearboxes are not bent		
Check driveline between gearbox and pulley is aligned.		
Gearbox leaking	Damaged oil seal	Replace seal
	Bent shaft	Replace oil seal and shaft
	Shaft rough in oil seal area	Replace or repair shaft
	Oil seal installed incorrectly	Replace seal
	Oil seal not sealing in the housing	Replace seal or use a sealant on outside diameter of seal
	Oil level too high	Drain oil to proper level
	Hole in gearbox	Replace the gearbox
	Gasket damaged	Replace gasket
	Bolts loose	Tighten bolts

Spare Parts

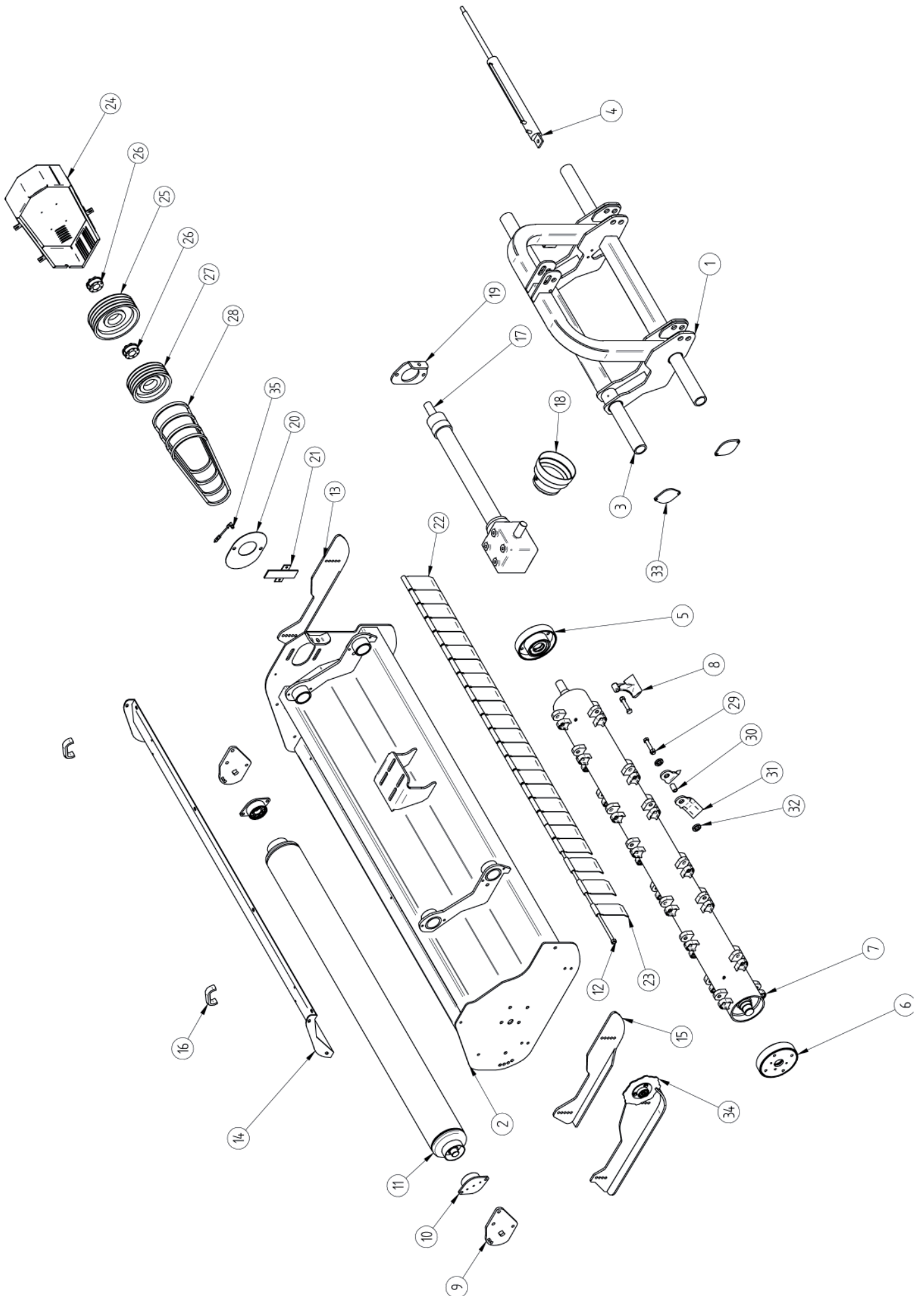
MJ22 Frame/Rotor/Transmission



MJ22 Frame/Rotor/Transmission

Item	Part No.	Description	Qty	Item	Part No.	Description	Qty
1	1014035103	BODY MJ22-140	1	26	1600000119	HANDLE	2
1	1016035103	BODY MJ22-160	1	27	1014005210	ROTOR MJ22-140	1
1	1018035103	BODY MJ22-180	1	27	1016005210	ROTOR MJ22-160	1
2	1014005101	REAR COVER MJ22-140	1	27	1018005210	ROTOR MJ22-180	1
2	1016005101	REAR COVER MJ22-160	1	28	1000000110	LOCKING PLATE	1
2	1018005101	REAR COVER MJ22-180	1	29	1000030803	HYDRAULIC RAM	1
3	1000035701	LINKAGE FRAME	1	30	0000020704	BUSH 40x40x38	1
4	1000000506	LEFT SKID	1	31	0000020701	ROD L=630	1
5	1000000504	RIGHT SKID	1	32	0000020703	BUSH 25x25x80	1
6	1000000404	ROLLER BEARING ASSEMBLY	2	33	0000020705	HANDLE L=142	1
7	1014005401	ROLLER MJ22-140	1	34	0000000604	BELT VENTILATION	1
7	1016005401	ROLLER MJ22-160	1	35	0000005201	ROTOR BEARING FLANGE RIGHT	1
7	1018005401	ROLLER MJ22-180	1	36	0000000206	CIRCLIP I90	4
8	1014000402	SCRAPER MJ22-140	1	37	0000000218	BEARING 2308	2
8	1016000402	SCRAPER MJ22-160	1	38	0000000208	SEAL 50x90x10	2
8	1018000402	SCRAPER MJ22-180	1	39	0000005202	ROTOR BEARING FLANGE LEFT	1
9	1010000303	GEARBOX PLATE	1	40	0000000207	SEAL 40x47x4	1
10	1000000301	SUPPORT PALTE	1	41	0014000602	GUARD SUPPORT BAR MJ22-140	1
11	0000000301	GEARBOX ASSEMBLY	1	41	0016000602	GUARD SUPPORT BAR MJ22-160	1
12	0000000613	PTO COVER	1	41	0018000602	GUARD SUPPORT BAR MJ22-180	1
13	0000005602	LOCKING PLATE	1	42	1014005602	PROTECTION MOUNT MJ22-140	1
14	0000000211	PLATE	1	42	1016005602	PROTECTION MOUNT MJ22-160	1
15	1000005201	GREASE KIT	1	42	1018005602	PROTECTION MOUNT MJ22-180	1
16	0000000305	PULLEY SPB 200/3-80	1	43	1000000603	GUARD 100MM MJ22-140	13
16	0000000307	PULLEY SPB 200/4-80 (MJ22-180)	1	43	1000000603	GUARD 100MM MJ22-160	15
17	0000000302	LOCKING BUSH 35/80	1	43	1000000603	GUARD 100MM MJ22-180	15
18	0000000306	PULLEY SPB 150/3-65	1	43	1000000604	GUARD 80MM MJ22-180	3
18	0000000308	PULLEY SPB 150/4-65 (MJ22-180)	1	44	0000000704	HOOK	1
19	0000000303	LOCKING BUSH 40/65	1	45	0000000705	PTO HANGER	1
20	0000005601	BELT PROTECTION	1	46	0000000701	PIN	2
21	0000000304	BELTS B 46 (17 x 1175)	3	47	0000000706	LINCHPIN	2
21	0000000304	BELTS B 46 (17 x 1175) MJ22-180	4	48	0000000703	PIN	1
22	0000000272_1	FLAIL MJ22-140	20	49	0000005505	BEARING FLANGE	1
22	0000000272_1	FLAIL MJ22-160	22	50	0000000520	BEARING 3204-B-2RSR	1
22	0000000272_1	FLAIL MJ22-180	26	51	FWM8	WASHERM8	3
23	0000000275	BOLT & NUT M16 MJ22-140	20	52	0000000505_1	PLATE	1
23	0000000275	BOLT & NUT M16 MJ22-160	22	53	M8X14BZP	BOLT M8x14	3
23	0000000275	BOLT & NUT M16 MJ22-180	26	54	1000005501_1	SKID	1
24	0000000270	FLAIL 40 x 10 MJ22-140	40	55	0000000521	CIRCLIP O47	1
24	0000000270	FLAIL 40 x 10 MJ22-160	44	56	0000000522	CIRCLIP O20	1
24	0000000270	FLAIL 40 x 10 MJ22-180	52	57	10000000700	BAR BRACKET	1
25	0000000274	SPACER MJ22-140	40	58	1000030802	HYDRAULIC KIT	1
25	0000000274	SPACER MJ22-160	44	59	EDOW14	1/4 DOWDY WASHER	2
25	0000000274	SPACER MJ22-180	52	60	1/4B	1/4 BANJO BOLT	2

MJ24 Frame/Rotor/Transmission

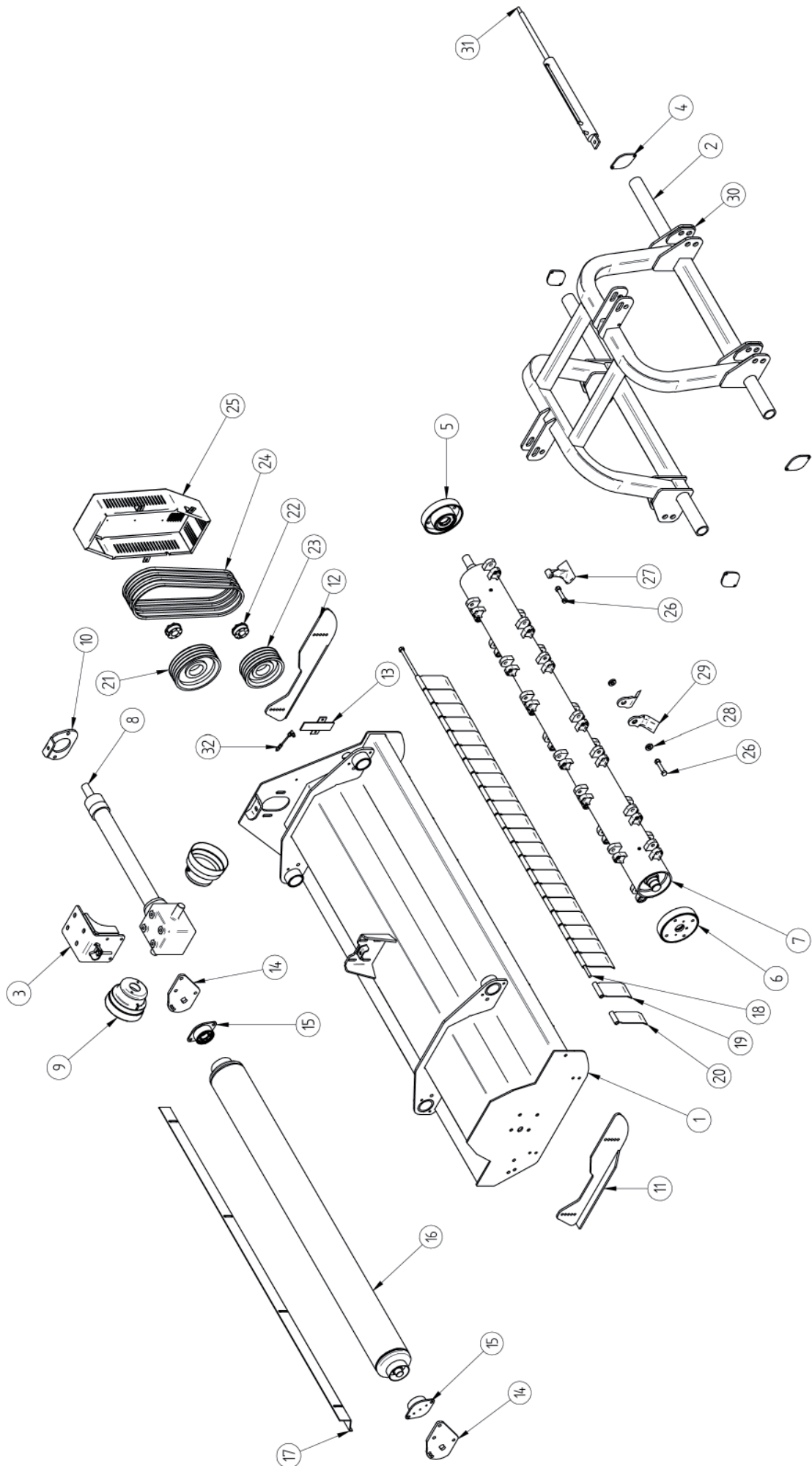


MJ24 Frame/Rotor/Transmission

Item	Part No.	Description	Qty	Item	Part No.	Description	Qty
1	3000035701	HDRAULIC LINKAGE	1	18	0000000613	PTO COVER	1
2	3023005102	FRAME MJ24-230	1	19	3000000301	DRIVESHAFT SUPPORT PLATE	1
2	3028005102	FRAME MJ24-280	1	20	3000000604	SUPPORT PALTE	1
3	3000003706	LINKAGE MOUNT TUBE	2	21	3000005602	LOCKING PLATE	1
4	3000030801	HYDRAULIC RAM	1	22	0600000601_1	GUARD 100MM	-
5	3000005206	ROTOR BEARING (LEFT) *	1	23	0600000602_1	GUARD 80MM	-
6	3000005205	ROTOR BEARING (RIGHT) *	1	23	0600000604	GUARD 90MM	-
7	3028005202	ROTOR MJ24-280	1	23	0600000603_1	GUARD 60MM	-
8	0000000273_1	FLAIL MJ24-230	52	24	3000005601	BELT COVER	1
8	0000000273_1	FLAIL MJ24-280	60	25	0000000326	PULLEY SPB 250/4-80	1
9	3000000401	ROLLER SUPPORT PLATE	2	26	0000000317	LOCKING BUSH 40/80	2
10	3000005403	ROLLER BEARING *	2	27	0000000327	PULLEY SPB 212/4-80	1
11	3023005403	ROLLER MJ24-230	1	28	0000000331	BELTS B 62	4
11	3028005403	ROLLER MJ24-280	1	29	0000000275	BOLT & NUT M16 MJ24-230	52
12	3023005601	GUARD SUPPORT BAR MJ24-230	1	29	0000000275	BOLT & NUT M16 MJ24-280	60
12	3028005601	GUARD SUPPORT BAR MJ24-280	1	30	3000000213	FLAIL BUSH MJ24-230	52
13	3000005503	SKID (LEFT)	1	30	3000000213	FLAIL BUSH MJ24-280	60
14	3023005103	REAR COVER MJ24-230	1	31	0000000278	FLAIL 60X10 MJ24-230	104
14	3028005103	REAR COVER MJ24-280	1	31	0000000278	FLAIL 60X10 MJ24-280	120
15	3000005504	SKID (RIGHT)	1	32	0000000712	SPACER MJ24-230	104
16	1600000119	HANDLE	2	32	0000000712	SPACER MJ24-280	120
17	0000005303	GEARBOX COMPLETE MJ24-230	1	33	3000000112	COVER PLATE	4
17	0000005306	GEARBOX COMPLETE MJ24-280	1	34	3000005505	SKID ASSEMBLY *	1
				35	3000005210	GREASE KIT	1

* - Further breakdown available

MJ26 Frame/Rotor/Transmission

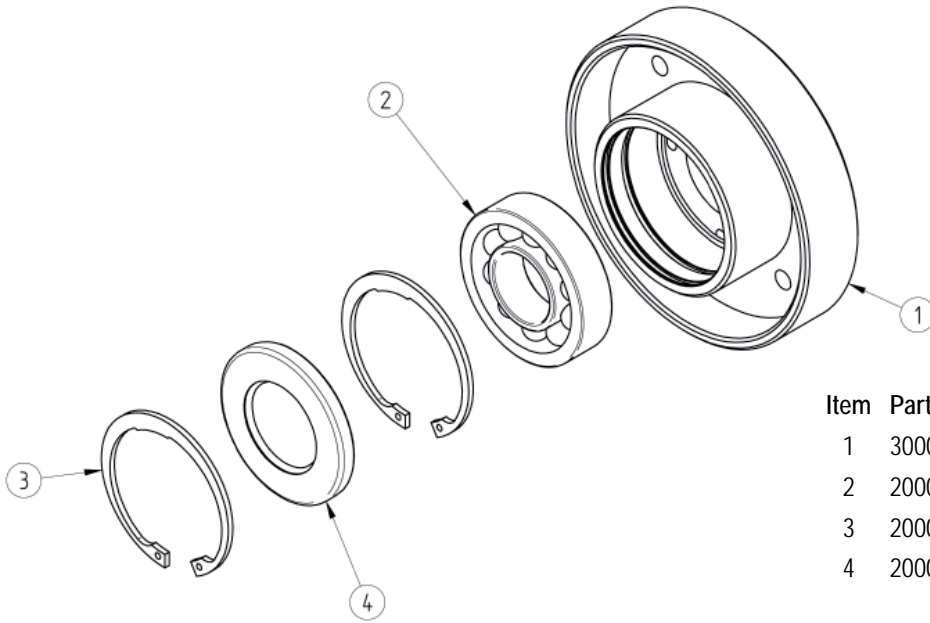


MJ26 Frame/Rotor/Transmission

Item	Part No.	Description	Qty
1	2323035102	BODY MJ26-230	1
1	2328035102	BODY MJ26-280	1
2	3000003706	LINKAGE MOUNT TUBE	2
3	2300005301	GEARBOX PLATE	1
4	3000000112	COVER PLATE	4
5	3000005206	ROTOR BEARING (LEFT)	1
6	3000005205	ROTOR BEARING (RIGHT)	1
7	3023005202	ROTOR MJ26-230	1
7	3028005202	ROTOR MJ26-280	1
8	0000005308	GEARBOX COMPLETE MJ26-230	1
8	0000005311	GEARBOX COMPLETE MJ26-280	1
9	0000000613	PRO COVER	2
10	3000000301	DRIVESHAFT SUPPORT PLATE	1
11	3000005504	SKID (RIGHT)	1
12	3000005503	SKID (LEFT)	1
13	3000005602	LOCKING PLATE	1
14	3000000401	ROLLER SUPPORT	2
15	3000005403	ROLLER BEARING *	2
16	3023005403	ROLLER MJ26-230	1
16	3028005403	ROLLER MJ26-280	1
17	3023000401	SCRAPER MJ26-230	1
17	3028000401	SCRAPER MJ26-280	1
18	3023005601	GUARD SUPPORT BAR MJ26-230	1
18	3028005601	GUARD SUPPORT BAR MJ26-280	1
19	0600000601_1	GUARD 100MM	-
20	0600000602_1	GUARD 80MM	-
20	0600000604	GUARD 90MM	-
20	0600000603_1	GUARD 60MM	-
21	0000000326	PULLEY SPB 250/4-80	1
22	0000000317	LOCKING BUSH 40/80	2
23	0000000327	PULLEY SPB 212/4-80	1
24	0000000330	BELTS D 62	4
25	2300005601	BELT COVER	1
26	0000000275	BOLT & NUT M16 MJ26-230	52
26	0000000275	BOLT & NUT M16 MJ26-280	60
27	0000000273_1	FLAIL MJ26-230	52
27	0000000273_1	FLAIL MJ26-280	60
28	0000000712	SPACER MJ26-230	104
28	0000000712	SPACER MJ26-280	120
29	0000000278	FLAIL 60X10 MJ26-230	104
29	0000000278	FLAIL 60X10 MJ26-280	120
30	2300035704	HYDRAULIC LINKAGE	1
31	3000030801	HYDRAULIC RAM	1
32	3000005210	GREASE KIT	1

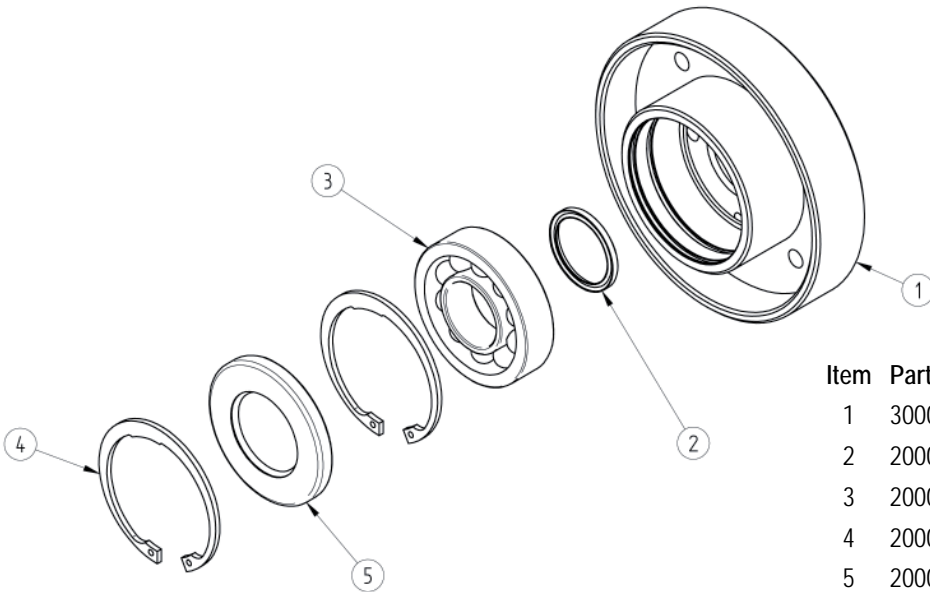
* - Further breakdown available

MJ24 & MJ26 Left Rotor Bearing (300005206)



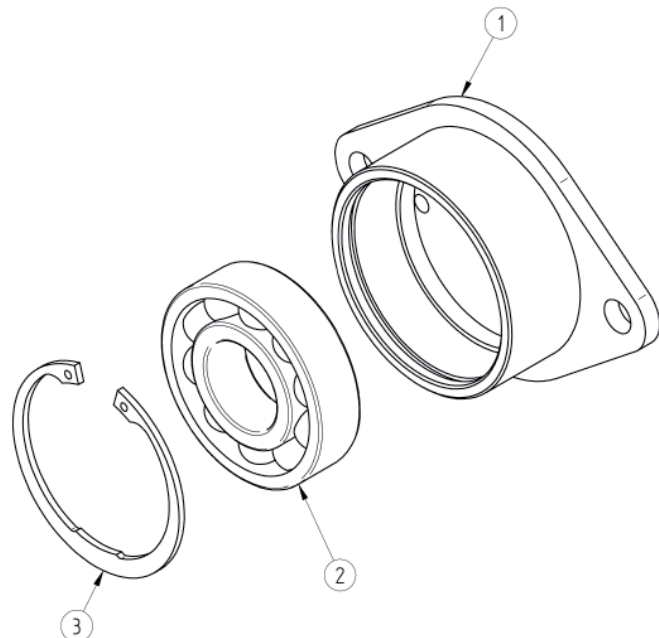
Item	Part No.	Description	Qty
1	300005204	BEARING FLANGE	1
2	200000117	BEARING 21310	1
3	200000118	CIRCLIP Ø 110	2
4	200000119	SEAL 60x110x12	1

MJ24 & MJ26 Right Rotor Bearing (300005205)



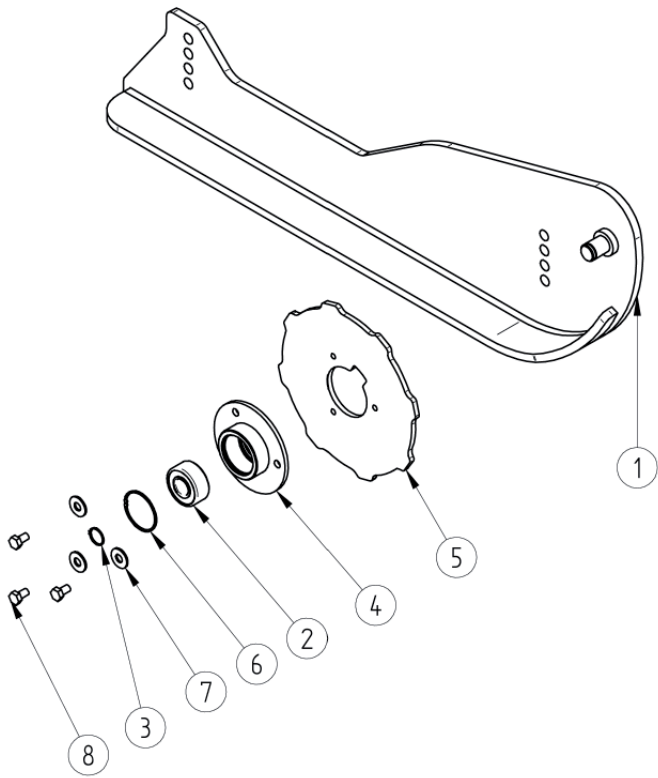
Item	Part No.	Description	Qty
1	300005203	BEARING FLANGE	1
2	200000120	SEAL 50x62x5	1
3	200000117	BEARING 21310	1
4	200000118	CIRCLIP Ø 110	2
5	200000119	SEAL 60x110x12	1

MJ24 & MJ26 Roller Bearing (300005403)



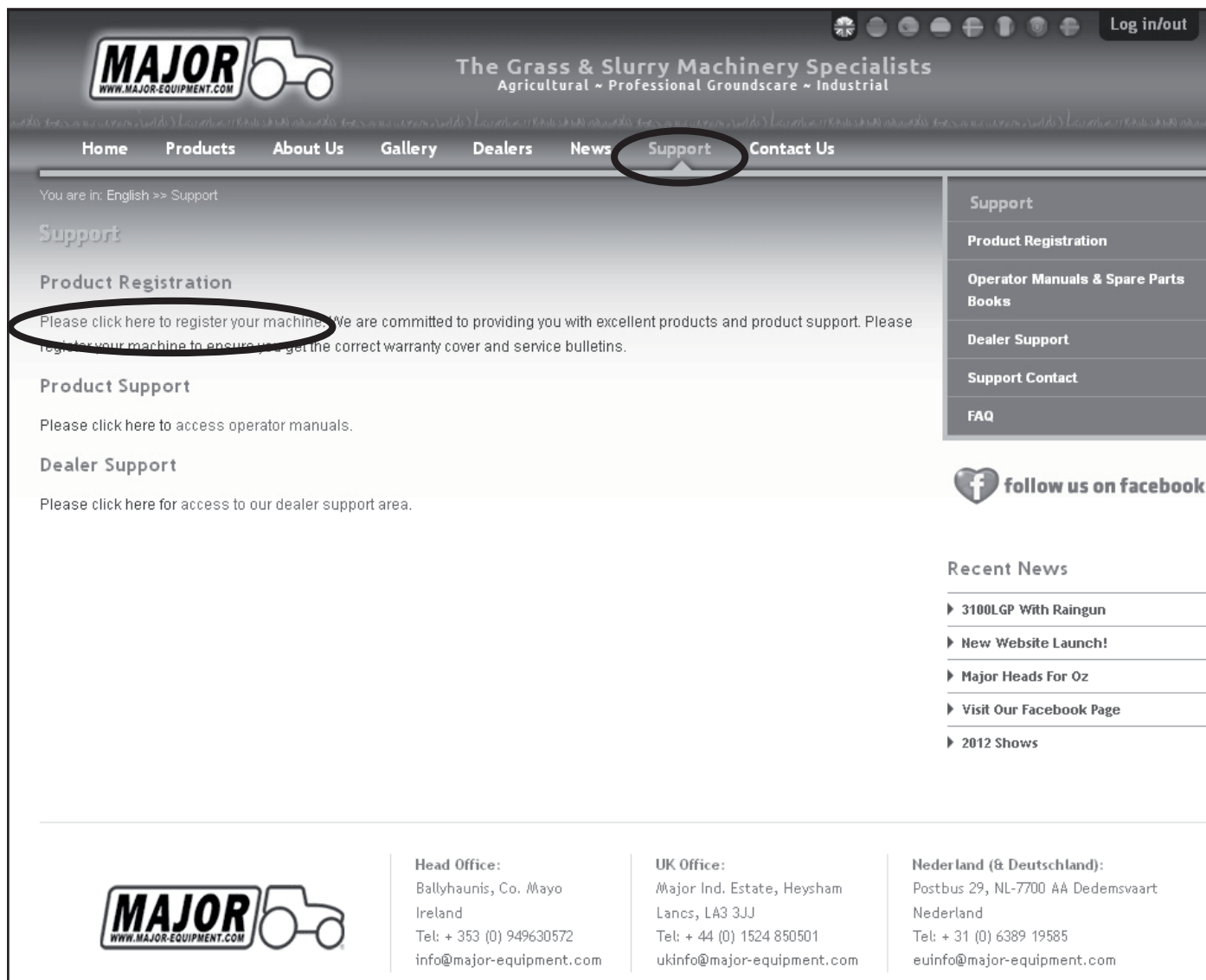
Item	Part No.	Description	Qty
1	300005401	BEARING FLANGE HOUSING	1
2	0000000411	BEARING 90-40-23	1
3	0000000206	CIRCLIP INT90	1

MJ24 Skid Assembly (300005505)



Item	Part No.	Description	Qty
1	300005506	SKID	1
2	000000520	BEARING 3204-B-2RSR	1
3	000000522	CIRCLIP Ø20	1
4	000005505	FLANGE	1
5	000000505_1	PLATE	1
6	000000521	CIRCLIP Ø47	1
7	FWM8	WASHER M8	3
8	M8x14	BOLT M8 x 14	3

Warranty: This machine is guaranteed for 12 months. No warranty is given where the machine is being used as a hire machine. Warranty is against faulty workmanship or parts, with the exception of components not of MAJOR'S manufacture or design, i.e. hydraulic components, universally jointed shafts, chains and tyres, etc., which are subject to the original manufacturers conditions. To register your machine for warranty, please go to the support section of our website www.major-equipment.com and enter your details.



MAJOR
WWW.MAJOR-EQUIPMENT.COM

The Grass & Slurry Machinery Specialists
Agricultural ~ Professional Groundscare ~ Industrial

Home Products About Us Gallery Dealers News **Support** Contact Us

You are in: English >> Support

Support

Product Registration

Please click here to register your machine. We are committed to providing you with excellent products and product support. Please register your machine to ensure you get the correct warranty cover and service bulletins.

Product Support


Please click here to access operator manuals.

Dealer Support

Please click here for access to our dealer support area.

Support

- Product Registration
- Operator Manuals & Spare Parts Books
- Dealer Support
- Support Contact
- FAQ

 follow us on facebook

Recent News

- ▶ 3100LGP With Raingun
- ▶ New Website Launch!
- ▶ Major Heads For Oz
- ▶ Visit Our Facebook Page
- ▶ 2012 Shows

MAJOR
WWW.MAJOR-EQUIPMENT.COM

Head Office:
Ballyhaunis, Co. Mayo
Ireland
Tel: + 353 (0) 949630572
info@major-equipment.com

UK Office:
Major Ind. Estate, Heysham
Lancs, LA3 3JJ
Tel: + 44 (0) 1524 850501
ukinfo@major-equipment.com

Nederland (& Deutschland):
Postbus 29, NL-7700 AA Dedemsvaart
Nederland
Tel: + 31 (0) 6389 19585
euinfo@major-equipment.com



HEAD OFFICE

Major Equipment Intl Ltd
Ballyhaunis, Co Mayo
Ireland
Tel: +353 (0) 9496 30572

UK OFFICE

Major Equipment Ltd
Major Ind. Estate, Heysham,
Lancs, LA3 3JJ, UK
Tel: +44 (0) 1524 850501

Netherlands & Germany OFFICE

Major Equipment Intl Ltd
Postbus 29, NL-7700 AA
Dedemsvaart, Nederland
Tel: + 31 (0) 6389 19585