



# Operator Manual & Parts List

## MAJOR Slurry Agitator Pumps

AG6000, AG8000 and AG7500-ECO



**Head Office**

Major Equipment Intl. Ltd.  
Ballyhaunis,  
Co. Mayo,  
Ireland.

Tel.: +353 (0) 9496 30572  
Fax: +353 (0) 9496 30788  
Email: [info@major-equipment.com](mailto:info@major-equipment.com)

**UK Office**

Major Equipment Ltd.  
Major Industrial Estate,  
Middleton Rd.,  
Heysham,  
Lancs.  
LA3 3JJ

Tel.: +44 (0) 1524 850 501  
Fax: +44 (0) 1524 850 502  
Email: [ukinfo@major-equipment.com](mailto:ukinfo@major-equipment.com)

**NETHERLANDS & GERMANY OFFICE**

Major Equipment Intl. Ltd.  
Postbus 29,  
NL-7700 AA ,  
Dedemsvaart,  
Nederland.

Tel: +31 (0) 6389 19585  
Email: [euinfo@major-equipment.com](mailto:euinfo@major-equipment.com)

Web: [www.major-equipment.com](http://www.major-equipment.com)



Find us on FACEBOOK  
MAJOR MACHINERY



View our channel  
MAJOREQUIPMENT

**Disclaimer**

While every effort has been made in the production of this manual to ensure that the information contained herein is full and correct, Major assumes no responsibility for errors or omissions.

Major reserves the right to modify the machinery and the technical data contained within the manual without prior notice.

Further to this, Major assumes no liability for any damages which may result from the use of the information contained within this manual.

# Contents

## Introduction

Thank you	1
Using Your Operator's Manual	1
Safety Issues	1

## Product Identification

Machine Serial Numbers	1
Product Specifications	1
Register Your Product and Warranty Online	2

## Safety

Machine Safety Labels	2
Safe operation	3
Workstation	3
Regulations for use of the transmission	3
PTO Shaft Safety	3
Driving Safely on Public Roads	4
Hazards associated with operating Slurry Agitators	4
Inspections before Use	5
Key to Main Parts	6
Starting Regulations	7
Hitching to the Tractor	7
Operating the Machine	7
Demounting the Implement from the Tractor	8

## Maintenance

Trouble Shooting	12
------------------	----

## Spare Parts

AG7500-ECO Parts	13
AG6000 Agitator Parts	19
AG8000 Agitator Parts	23

## **EEC certificate of conformity for machines**

*(conforming to Directive 98/37/EEC)*

Company: Major Equipment Ltd.  
Address: Coolnaha,  
Ballyhaunis,  
Co. Mayo,  
Ireland.  
Tel. +353949630572  
Fax +353949630788


*declares in sole responsibility that the product:*

### **AGITATOR SLURRY PUMPS**

When properly installed, maintained and used only for it's intended purpose, complies with all the essential Health & Safety requirements of:

- **THE SUPPLY OF MACHINERY (SAFETY) REGULATIONS 2008.**
- **Construction and Use regulations 1986 (UK).**
- **ISO4254-1:2008.**
- **S.I. No. 299 of 2007**, Safety, Health and Welfare at Work (General Application) Regulations 2007 **(Ireland).**
- **Health & Safety at Work, etc. Act 1974 (c.37) (UK).**
- **Machinery Directive 2006/42/EC.**
- **EN ISO 13857** - Safety of machinery: Safety distances to prevent hazard zones being reached by upper and lower limbs.

I certify on behalf of Major Equipment Int. Ltd., that this machine when properly installed and operated correctly, complies with all the essential Health & Safety requirements of all legislation referred to above.

Signature :   
\_\_\_\_\_  
Managing Director

Date 12/01/2012

# Introduction

## Thank you

We appreciate having you as a customer and wish you many years of safe and satisfied use of your machine.

## Using Your Operator's Manual

This manual is an important part of your machine and should remain with the machine when you buy it. Reading your operator's manual will help you and others avoid personal injury or damage to the machine. Information given in this manual will provide the operator with the safest and most effective use of the machine.

Sections in your operator's manual are placed in a specific order to help you understand all the safety messages so you can operate this machine safely. You can also use this manual to answer any specific operating or servicing questions.

## Safety Issues

Your manual contains special messages to bring attention to potential safety concerns, machine damage as well as helpful operating and servicing information. Please read all the information carefully to avoid injury and machine damage.

# Product Identification

## Machine Serial Numbers

If you need to contact MAJOR or your MAJOR dealer for information on servicing or spare parts, always provide the product model and serial numbers.

We suggest that you record your machine details below:

Model No: \_\_\_\_\_

Serial No: \_\_\_\_\_

Date of Purchase: \_\_\_\_\_

Dealer Name: \_\_\_\_\_

Dealer Telephone: \_\_\_\_\_

## Product Specifications

Model	Drive	Working Depth	Power (HP)	PTO RPM	Weight (Kg)	Output (l/min)
AG6000	Chain	6'	70	540	540	9240
AG8000	Chain	8'	70	540	560	9240

Model	Drive	Working Depth	Power (HP)	PTO RPM	Weight (Kg)	Output (l/min)
AG7500-ECO	PTO	7'7"	90	540 - 750	598	13500

## Register Your Product and Warranty Online

To register your product through the Internet, simply go to the Support section on [www.major-equipment.com](http://www.major-equipment.com). Completing the information, either online or with the product warranty card, will ensure the customer that their product receives all post sales service and important product information.

# Safety

## Machine Safety Labels

The machine safety labels shown in this section are placed in important areas on your machine to draw attention to potential safety hazards.

On your machine safety labels, the words DANGER, WARNING, and CAUTION are used with this safety-alert symbol. DANGER identifies the most serious hazards.

The operator's manual also explains any potential safety hazards whenever necessary in special safety messages that are identified with the word, CAUTION, and the safety-alert symbol.



**To prevent Serious Injury or Death**

- Avoid unsafe operation or maintenance.
- Do not operate or work on this machine without reading and understanding the operator's manual.
- If manual is lost, contact your nearest dealer for a new manual.



To avoid injury, read the manual



PTO entanglement hazard - keep clear of PTO drives.

**ATTENTION!!**

**CHECK TIGHTNESS OF TRANSMISSION BOLTS AT EVERY SERVICE.**

**WARNING**

**SLURRY GASES CAN KILL**

- Keep animals and people out of slatted houses when mixing is in progress.
- Secure suction hoses to prevent them falling into the tank.
- Don't stand near tank openings or stoop to floor level when mixing is in progress.
- Never enter a below ground slurry tank unless there is no alternative. If you have to go in, wear a life line held by two men.

GRAS-009

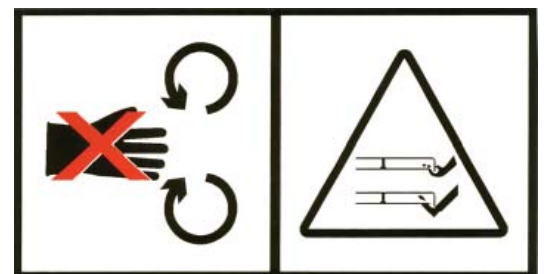
**WARNING**



**DO NOT GO NEAR LEAKS**

- High pressure oil easily punctures skin causing serious injury, gangrene or death.
- If injured, seek emergency medical help, immediate surgery is required to remove oil.
- Do not use finger or skin to check for leaks.
- Lower load or relieve hydraulic pressure before loosening fittings.

High oil pressure hazard



Rotating impeller hazard. Keep clear when machine is in operation

**MAX PTO INPUT**  
**540 RPM**

---

**MAX. PRISE DE FORCE**  
**540 TOURS/MINUTE**

AG 6000 & AG 8000 PTO input

**RECOMMENDED 540 RPM**

**MAXIMUM 750 RPM**

Eco-Agi PTO input

## Safe operation

The MAJOR Agitator Pumps are designed to operate at 540 and 750 RPM. Please check the specifications of your machine at the beginning of this manual. They must only be used with a suitable tractor (see product specifications) and driven by an adequate drive-line by the tractor PTO. All other use is strictly prohibited.



Users should become thoroughly familiar with the contents of this manual before using, servicing and mounting the implement to the tractor and all other pertinent operations. Never wear jewellery, loose clothing such as ties, scarves, belts, unbuttoned jackets or dungarees with open zips which could become caught up in moving parts.



Always wear approved garments complying with accident prevention provisions such as non-slip shoes, ear muffs, goggles and gauntlets. Wear a jacket with reflecting stickers if the implement is used near public highways.

Consult your retailer, the Labour Health Service or your nearest equivalent authority for the information about the current safety provisions and specific regulations with in order to ensure personal safety.



**ALWAYS DISENGAGE PTO, SWITCH OFF THE TRACTOR ENGINE AND ENGAGE THE PARKING BRAKE BEFORE MAKING ADJUSTMENT TO THE MACHINE.**



**NEVER PLACE LIMBS UNDER THE MACHINE WHILE ROTORS ARE TURNING. ROTORS CAN REMAIN TURNING FOR UP TO 1 MINUTE AFTER DISENGAGING PTO.**

## Workstation

When working with the machine, the operator must only sit in the driving seat of the tractor. No one else may approach the machine. Ensure adequate ventilation as slurry gasses can kill. Leave the driver's position only after having:

- disengaged the power takeoff;
- applied the parking brake;
- turned off the engine;
- removed the ignition key from the dashboard.



**NEVER OPERATE THE HYDRAULICS WITH THE TRACTOR SWITCHED OFF**

## Regulations for use of the transmission

The transmission to the gearbox (Eco-Agi only) is protected throughout the machine by both PTO shafts and bolt down covers. All guarding should be kept efficient and in good condition. If the condition is poor, the guarding should be renewed before the implement is used.

**UNLESS IT IS CORRECTLY PROTECTED THE TRANSMISSION COULD CAUSE DEATH SINCE IT CAN CATCH ON PARTS OF THE BODY OR CLOTHING**

Ensure retaining chains are correctly anchored on all PTO shafts, preventing them from turning. Ensure drive line can turn easily within the shield. Keep spline grooves clean and greased so that PTO shaft can connect easily. Besides being described in this manual, the method by which the PTO shaft is connected to the tractor must be checked out with the instructions in the tractor manufacturer's manual.

## PTO Shaft Safety

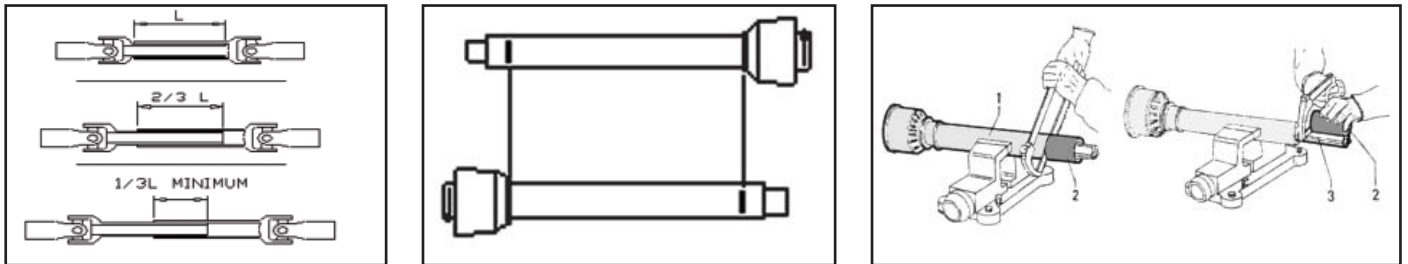
MAX PTO INPUT 750 R.P.M. Contact your nearest dealer or a specialised retail outlet if the PTO must be replaced with a longer one, since this must belong to the same power category and possess the same characteristics. An unsuitable PTO could easily break.

The tractor PTO shaft length may be altered to suit the individual tractor model. When the machine is in operation, the PTO shaft should have a minimum 1/3 engagement as shown in the diagrams. After the topper has been hitched to the tractor, it should be checked in various positions that the drive line is the correct length. If the PTO is too short and tends to slip out of place, it must be replaced with a longer one.



If the PTO shaft is too long, it should be shortened in the following way:

- Set the machine at a minimum distance from the tractor, then brake the tractor and switch off the engine.
- Separate the two halves of the PTO. Insert the female part into the tractor PTO and the male part into the machine PTO, checking that the position is correct by means of the fixing pins.
- Line up the two halves of the PTO together, keeping them parallel.
- Using a felt tip pen, match mark the place where the two halves must be shortened as shown.
- First cut shield "1" and use part "2" as a reference to cut the splined shaft.
- Proceed in the same way for the second half.
- Trim and chamfer the two cut ends of the PTO and clean off all swarf and shavings.
- Grease the two profiles and join the two halves of the PTO together.
- Mount the PTO shaft and check that its length is correct as before.



## Driving Safely on Public Roads



When driving on public roads, always comply with the Highway Code provisions in force in the country where the machine is being used. Pay particular attention near crossroads, underpasses, level crossings, when meeting other vehicles, overtaking stationary or slower vehicles. Drive near the edge of the road and try not to hold up the traffic.

Never park the tractor and/or implement near crossroads, bends, level crossings or where the equipment could be a danger or obstruction to pedestrian traffic. Never drive on public highways when the implement or tractor are particularly dirty since soil, grass and other items could drop on to the road and obstruct the normal road traffic. Disengage the PTO and disconnect the driveline when transporting the implement.

MAXIMUM TRANSPORT SPEED MUST NOT EXCEED 30Km/Hr (18 MPH)

## Hazards associated with operating Slurry Agitators

### Gas Hazards

Mixing slurry releases gases into the atmosphere. The gases present include methane, carbon dioxide, ammonia and hydrogen sulphide. All these gases are unpleasant, however hydrogen sulphide is extremely poisonous both to people and animals. It affects the nervous system causing symptoms which range from discomfort to sudden death

### SYSTEM OF WORK

The following rules summarise a practical approach to disposal of slurry from tanks:

- Remove all stock from the housing. Ensure pets do not have access to the building. (There have been many incidents in which animals have been killed by gases released from slurry during mixing).
- Ventilate fully by opening all doors etc to provide a strong draught at floor level - avoid mixing slurry in very still weather if possible.
- After starting up the pump, leave the house immediately and do not re-enter for as long as possible - at least half an hour. An outside mixing point is ideal – always start the mixing process from there.
- Work in conjunction with a second adult person - preferably keeping a watch from outside the house if you have to enter to move the pump etc.
- If slats are removed, cover exposed areas of the tank beside the pump to avoid falling in.
- Keep children safely away from the work site.
- Never enter an underground tank without an independent air supply and lifeline attached.

The most effective defence against the slurry gas threat is common sense and following the rules above because it is fair to assume that gas is present in all cases



### **Crush Hazard**

Bystanders can be injured when machine is lowered. Keep clear of machine when setting it up.

### **Rotating Impeller Hazard**

All persons are at risk if they place their hands or feet under the machine when it is raised from the ground when the impeller is in motion.

### **Pinch Hazard**

Pinch points are created when two objects move together, with at least one of them moving in a circle. This hazard is common in power transmission devices such as Belt Drives, Gear Drives & Rollers. Ensure all guarding is present.

### **Wrap Hazard**

Any exposed, rotating machine component is a potential wrap point. Injuries usually occur when loose clothing or long hair catch on and wrap around rotating parts such as PTO shafts or Drive shafts on the machine. Ensure all guarding is present.

### **Free-wheeling parts Hazard**

The heavier a revolving part is, the longer it will continue to rotate after power is shut off. This characteristic is called 'free-wheeling.' Rotary mower blades, and various other components, drive shafts etc., will continue to move after power is shut off--often for several minutes. Injuries occur

- When operators shut off equipment, and attempt to clean or adjust a machine before components have completely stopped moving
- When shear bolt protection device in PTO shaft shears & the rotors are still spinning but the primary PTO shaft is stationary. Operator awareness is the key to safety around freewheeling parts.

### **Thrown objects Hazard**

Slurry Agitators expels liquid at force, note that stones & other items may be in the slurry mix. Ensure that output nozzle is not directed at persons.

### **Hydraulic Hazard**

Hydraulic systems store considerable energy,. Careless servicing, adjustment, or replacement of parts can result in serious injury. High pressure blasts of hydraulic oil can injure eyes or other body parts. The following precautions are crucial:

- Make certain the hydraulic pump is turned off.
- Lower attached equipment to the ground.
- Confirm that load pressure is off the system.

A pinhole leak in an hydraulic hose is a serious hazard. A leak may not be visible, and the only sign may be a few drops of fluid. Never inspect hydraulic hoses with your hands, because a fine jet of hydraulic fluid can pierce the skin.

### **Slips trips and falls Hazard**

Slips and falls often result from:

1. Slippery footing on the ground
2. Cluttered steps and work platforms.

The potential for slips and falls can be greatly reduced by using good judgement and practicing good housekeeping on and around equipment.

### **Noise Hazard**

Please note that the machine is normally used outdoors and that the position of the operator is seated in the driving seat of the tractor. It is advisable to consult the prescriptions listed in tractor operator and maintenance manuals.

The acoustic pressure was measured at a distance of 2.6m from the centre of the machine and at a height of 2.0m, with the implement operating in a no load condition - 90 dBA. In a loaded condition & a PTO rate of 540 rpm the obtained value was 97dBA.

## **Operating the Machine**

### **Inspections before Use**

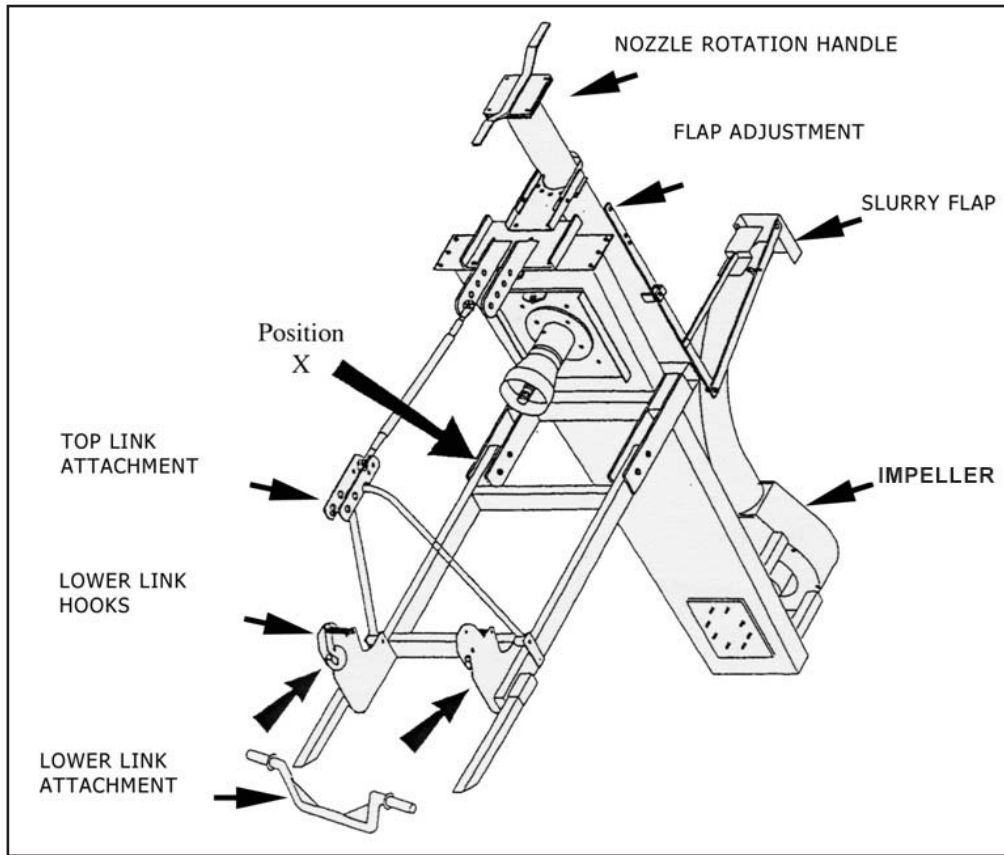


Always disengage PTO, Switch off tractor engine and engage the parking brake before making adjustments to the machine.

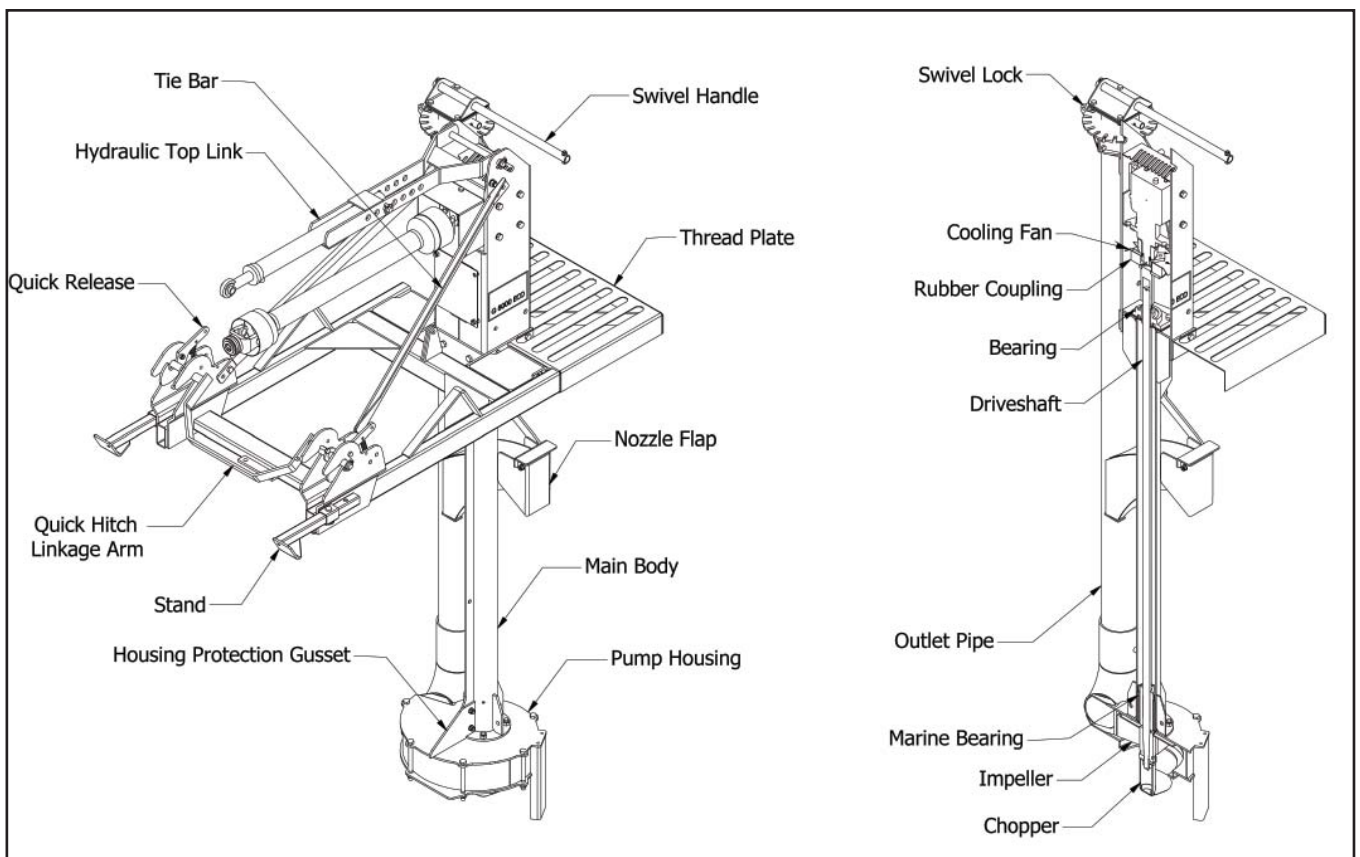
Check the implement for wear and damage. Check that all nuts and bolts are fully tightened, with particular reference to the impeller nut. Check that the oil and greases in the various points are at the correct level. Despite the previous inspections, lubricant may have partially spilt during transport and need topping up.

## Key to Main Parts

AG6000 and AG8000



## Eco-Agi



## Starting Regulations

Always check that any imminently dangerous conditions have been eliminated before using the machine. Ensure all guarding is present & the operator is fully aware of the operations of the machine. Always ensure the pins lock the PTO shaft yoke ends onto the spline shafts on both the tractor and the implement. An unlocked shaft could slip out of position, causing notable mechanical damage and serious injury to both operator and bystanders.

## Hitching to the Tractor

Attach the quick coupling bar to the lower links of the tractor. This detaches from the implement by raising the two spring loaded retaining lugs. Reverse the tractor towards the implement, aligning the tractor lift links with the two side coupling pins. Turn off the tractor engine, remove the ignition key from the dashboard and insert the brake. Attach the hydraulic top link to the tractor linkage bracket. Fit the PTO driveline and secure the safety chains.

Consult the descriptions on the following pages for greater details. If a safety system is required, this must be mounted from the side of the implement and not from the side of the tractor. Check that the driveline is the correct length.

### Danger:

Check that all the guards and shields are installed and efficient. Always operate on a flat and levelled surface when hitching the implement to the tractor. This will prevent dangerous movements.

### Warning:

The implement must be used with a suitable tractor. Pay particular care when checking the following:  
Stability. The weight and dimensions of the implement must suit the technical specifications of the tractor. The user shall ensure that the implement is fit for use with the tractor in his possession. Never allow anyone to stand between the tractor and the implement.

### Caution:

Prevent damage to the gears by checking the level of lubricant in the gearbox before using the implement. Top up with oil of the same type if necessary. Check that all warning and danger stickers are installed and legible. Replace them if necessary. Check that the tractor is in a good condition. Check the oil levels in the engine, gearbox and brakes. Check the cooling water level and tyre pressure. Always refer to the instruction manual supplied with the tractor.

## Operating the Machine

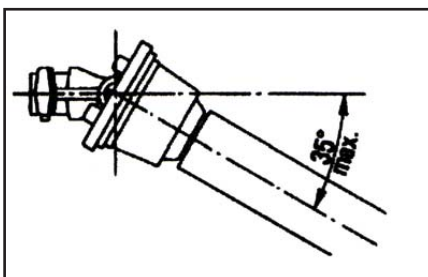
### Warning:

Always be careful to check that the power rating of the tractor does not exceed the maximum power rating for the model in your possession. Check that the speed of the PTO complies with the speed required by the implement. Compare the values on the shield of the PTO shaft.

Every time the implement is adjusted, the procedure must be as follows:

1. Disengage the power takeoff;
2. Insert the tractor brake;
3. Turn off the tractor engine;
4. Remove the ignition key from the dashboard.

Keep body parts clear of the rotating parts. Wait for them to stop moving.



### Caution:

The maximum tilt the driveline can bear with the PTO engaged is 35 degrees.

It is strictly forbidden to lean on and/or climb on to the implement during the work or transport phases. The agitator is an implement. It is NOT designed to carry persons or property.

Before working, always check that all the safety shields are installed, correctly mounted and efficient. Failing this, stop the implement and replace or repair the damaged shields.

Never continue work until all the shields installed by the manufacturer are efficient. Contact your nearest after-sales service centre if necessary. Always make sure to check that there are no adults, children or animals in the vicinity before beginning work with the implement. Always check that the work area is free from any objects that could be hit by the impeller and ejected from the implement at great speed. Check that no one moves into the field of action of the machine. Always become familiar with implement use before working with the implement. Make sure that you know how to quickly stop the work operations.

If any further adjustments are necessary, carry out the work. Accelerate the tractor by depressing the accelerator pedal to about half its travel and then engage the PTO. Advance with the tractor, setting the PTO to the required rpm rate of which the maximum is shown.

### **Demounting the Implement from the Tractor**

- Disengage the PTO. Set the implement on a flat surface.
- Stop the tractor and engage the parking brake.
- Rest the implement on the ground.
- Switch off the tractor engine.
- Remove the ignition key from the dashboard.
- Remove the driveline.
- Detach the hydraulic connections.
- Detach the implement from the tractor by disconnecting the link arms.

## **Maintenance**

The machine must always be disconnected from the tractor before any cleaning, lubricating and servicing operations can be carried out. Maintenance must be carried out by qualified personnel.

If interventions must inevitably be carried out while the machine tool is still attached to the tractor,

Proceed as follows:

1. Disengage the power takeoff;
2. Insert the brake;
3. Turn off the tractor engine;
4. Remove the ignition key from the dashboard.

If emergency operations are required whilst the machine is connected to the tractor, switch off the engine, engage the parking brake and disengage the PTO. The implement must be stationary and the tractor PTO disengaged before any work is carried out on the implement.

To prevent all risks, the operator should not merely trust in the hydraulic system of the tractor since this can be liable to leaks able to lower the machine even when the engine is off. Always block the machine with a rigid support when work must be carried out underneath.

Good, regular maintenance and correct use are essential if the implement is to remain safe and long lasting. Respect the following rules, which can also be found on the plates attached to the machine.

Only ever use genuine "MAJOR" spares to ensure the steady and reliable operation of your implement and prevent the warranty from becoming void.

Routine and extraordinary maintenance operations must be carried out in a specially prepared place using correct and efficient tools. This place must always be kept clean and dry. There must be sufficient space around the implement to allow work to be easily carried out. Only trained and specialised personnel must be allowed to service the implement. Contact your nearest dealer when maintenance work is required.

Comply with the indicated bans and procedures when servicing the implement. Never ever use gasoline, solvents or other inflammable fluids as detergents. Use the non-flammable and non-toxic commercially available solvents authorised by the competent authorities.

Never use compressed air or highly pressurised water to clean the implement. When this is absolutely inevitable, protect the eyes using goggles with side guards and use the lowest possible pressure. At the end of the job, check and inspect the implement while it is still disconnected from the tractor. Never carry out welding operations without the manufacturer's permission and instructions.

Before welding, always detach the implement from the tractor in order to prevent damage to the battery. Always wear a protective mask, goggles and gauntlets when welding, lapping or grinding, hammering or drilling. The implement should be lubricated.

**Danger:**

Correctly remount all guards and shields that were removed during the maintenance and repair operations.

**Testing:**

All implements are tested in our plants to ensure that all moving parts operate correctly.

**Warning:**

Always operate the machine outdoors. If the machine connected to the tractor must inevitably be started in a closed room, eg. during tests after maintenance, always ensure that there is adequate ventilation to prevent harmful exhaust gas from accumulating. Carry out various manoeuvres assisted by specialized personnel in order to simulate the different work conditions and acquire the necessary familiarity with the implement.

**Danger:**

Before starting, always check that there are no foreign bodies such as stones, soil or other, clinging to the impeller. When the impeller turns, such items could detach and be violently thrown at even notable distances. Always operate within a protective cage, or at least near a solid wall. Always check that no one is too near or in a potentially dangerous position if the implement is to be operated raised from the ground, when testing for example.

Always disengage the PTO before driving the tractor to transport the implement from one place to the other.

1. The implement is checked to see that the serial number and all stickers have been affixed.
2. All points are greased. The oil level in the gearbox is also checked.
3. The transmission belts are checked to ensure that their tension is correct.
4. Check for oil leaks.
5. Check to see that all safety devices are installed and efficient.
6. General inspection during operation.

Besides the above inspections, your implement needs to be constantly checked and inspected according to the following frequencies.

Periodic Inspections:

Every 8 hours service

1. Grease the rotary shaft supports.
2. Check the condition of the driveline and grease the journals.
3. Grease Top & Bottom Housings (AG6000 & AG8000)

Every 50 hours service

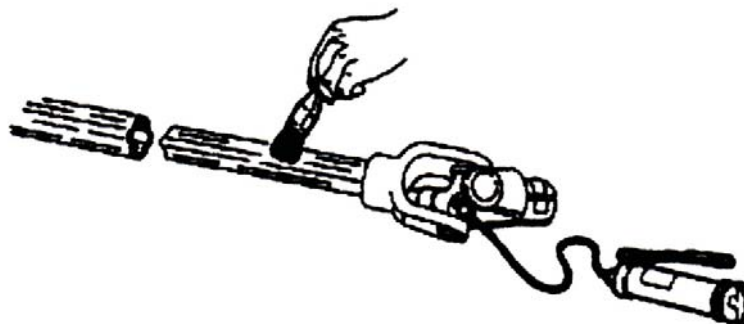
1. Check the oil level in the gearbox. (Eco-Agi)
2. Demount and clean the driveline. Be sure to remove all foreign bodies from the sliding parts of the shaft. (both models)
3. Cover sliding parts with grease before remounting the driveline. (both models)
4. Check that all nuts and bolts are fully tightened. (both models)
5. Check Oil level in Chain bath (AG6000 & AG8000)

Every 250 hours service

1. Change the oil in the gearbox. Consult the table across for the recommended type of oil. (Eco-Agi)
2. Check the rubber bearing and replace if necessary (Eco-Agi).
3. Check the impeller and chopper for wear. Replace them if necessary (both models)
4. Cleaning and greasing the driveline (both models)

*CAUTION!!! Use non-toxic, non-inflammable solvents to prevent the risk of intoxication or fire outbreaks. Remove the splined parts. Using non-toxic and non-inflammable solvents degrease the dirty parts; particularly the sliding grooved sections and universal couplings.*

Using a clean brush spread a film of grease on the surfaces of the sliding section . Grease the journals until grease oozes from all the articulations of each journal.



5. Checking and changing the oil in the gearbox. Warning: The used oil is a pollutant and must be disposed of correctly. Pour it into a suitable container and take it to the special oil collection points.
6. Check the oil in the gearbox. Check the level of the lubricant through the plug; the oil must reach the lower edge of the hole of level plug.

#### **Changing the Oil in the Gearbox (Eco-Agi only)**

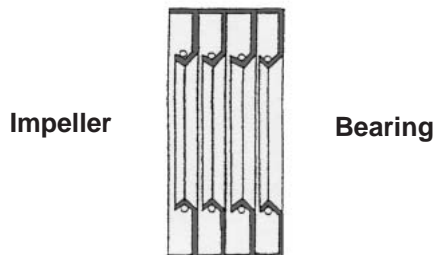
Change the first oil fill after the first 50 hours service. Following this, the oil should be changed after every 250 hours service. Use specification SAE 80W90 oil.

#### **Chain Tension (AG6000 & AG8000)**

Adjust chain by loosening the four flange bolts and move the chain adjusting nuts the appropriately. Chain tension can be checked by looking through the inspection cover provided. Do not over tighten the chain as damage will occur to both bearings and chain. To maintain long life, the maintenance schedule has to be followed, particular in relation to greasing the bottom housing

#### **Seal Replacement on AG6000 & AG8000 Bottom Housing**

Ensure all seals face in the same direction as shown. This ensures Slurry cannot contaminate the bearings and also ensures grease lubricates all the seals.



#### **Periodic checks**

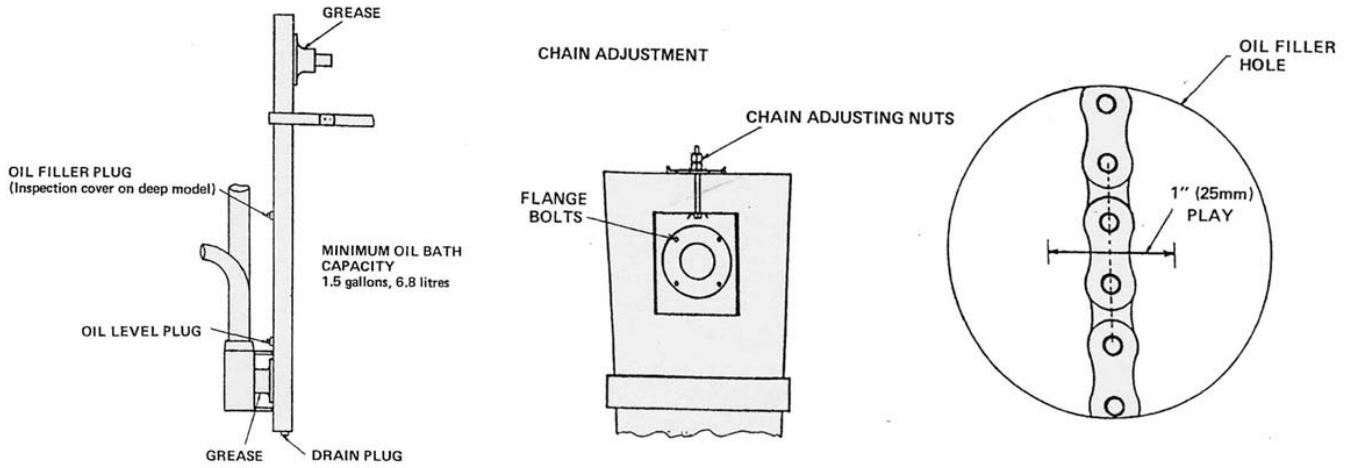
All nuts and bolts in the transmission including PTO Shafts and Gearboxes should be checked for tightness after use at the following intervals:

- 1st 4 hours,
- 1st 25 hours,
- 1st 100 hours, and every 250 hours thereafter.

Lubricate moveable mechanical joints when required.



## Greasing and Oiling Points (AG6000 & AG 8000)



### Grease the following:

	Initially	8 Hours	16 Hours	40
Roller Bearing (1) (Eco-Agi)	•			•
Outlet Pipe Bearing pivot (2) (Eco-Agi)	•	•		
PTO Shaft yoke ends (3)	•		•	
Top & Bottom Housings	•	•		
Check the following				
Oil Level in Chain bath	•		•	

Use EP2 type grease

### How to store the machine for long periods.

Clean all dirt from the implement Park the implement on a flat surface, in a sheltered place inaccessible to either children or animals in a stable position to prevent it from moving; falling or being fitted over etc. Check that the weight of the machine is not too heavy for the surface on which it rests.

### Scrapping the machine

When scrapping the machine, the procedure to adopt is as follows: remember that it is almost completely made of ferrous material. The only potentially polluting components on the machine are the lubricants. To prevent them from polluting the environment, spread a waterproof tarpaulin on the ground, position the machine on this and then drain out the lubricants, which must be collected in suitable containers. Now dismantle the machine, separating the components in the following way:

- painted parts;
- ferrous parts;
- plastic parts;
- rubber parts.

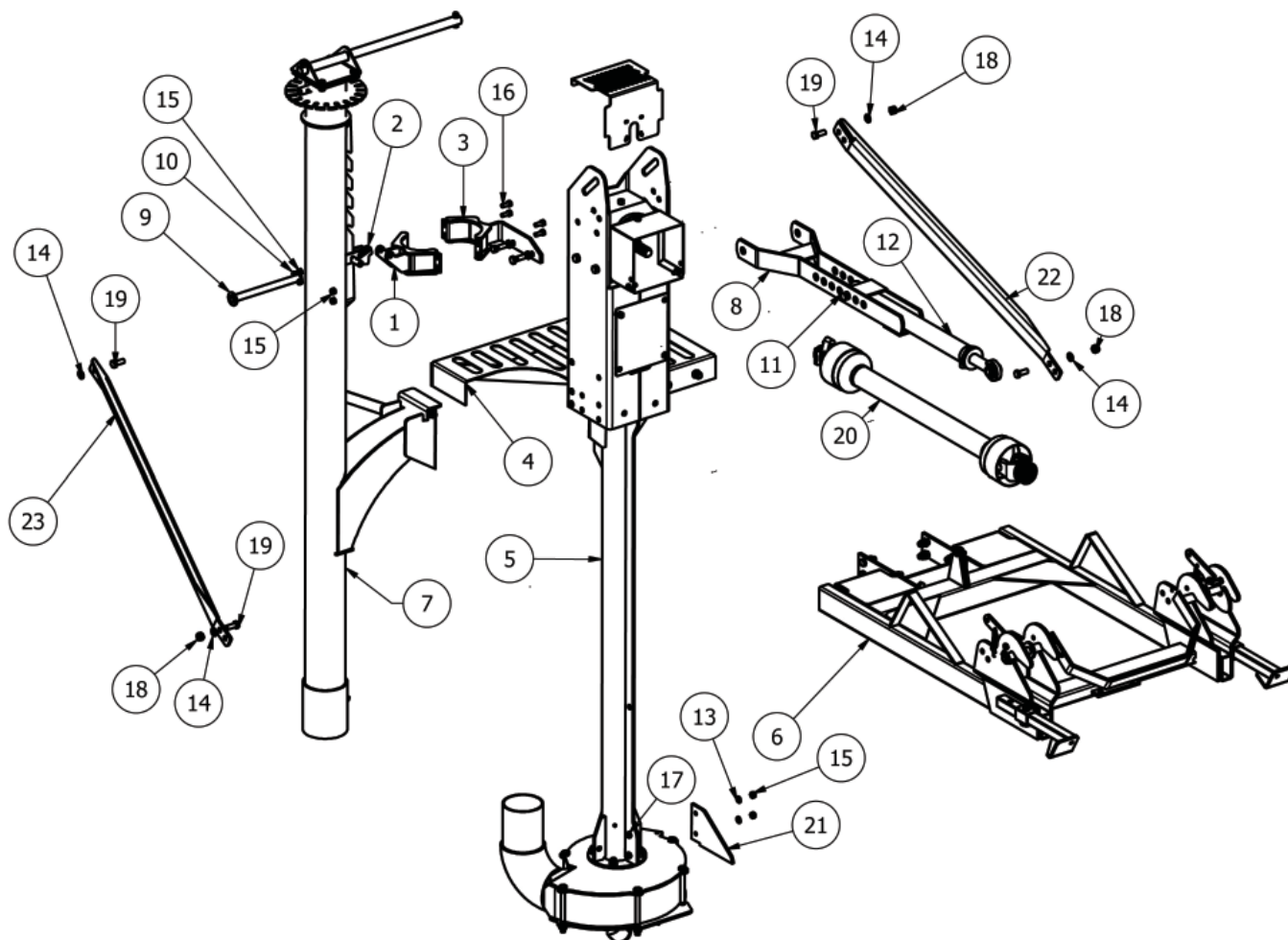
## Trouble Shooting

<b>Fault</b>	<b>Cause</b>	<b>Remedy</b>
<b>Gearbox overheating</b>	Low on lubricant	Fill to proper level
	Improper type lubricant	Replace with proper lubricant
	Excess of leaves, grass, etc., build-up around gearbox	Remove trash
<b>Implement will not pump</b>	Broken drive line	Check driveline
	Impeller slipping	Check impeller key
<b>Implement seems to require excessive power</b>	Slurry too thick	Add water to slurry
	PTO speed too high	Lower PTO speed
	Slurry flap closed off	Open slurry flap
	Worn or dull impeller blades	Replace impellers
	Tractor not large enough	Use larger horsepower tractor
<b>Excessive vibration</b>	Check gearbox bolts	Tighten if loose
	Check for loose nut on impeller	Tighten if loose
	Impeller broken	Replace impeller
	Rubber bearing worn	Replace rubber bearing
	Top bearing worn or loose	Tighten if loose ; Replace if worn
	Drivelines not phased correctly. Implement and tractor yokes must be in line	Phase the driveline. Replace if damaged
<b>Gearbox or bearing housing noisy</b>	Worn bearing	Replace bearings
	Low oil in gearbox	Check level and add oil
<b>Gearbox leaking</b>	Damaged oil seal	Replace seal
	Bent shaft	Replace oil seal and shaft
	Shaft rough in oil seal area	Replace or repair shaft
	Oil seal installed incorrectly	Replace seal
	Oil seal not sealing in the housing	Replace seal or use a sealant on outside diameter of seal
	Oil level too high	Drain oil to proper level
	Hole in gearbox	Replace the gearbox
	Gasket damaged	Replace gasket
	Bolts loose	Tighten bolts

# Spare Parts

## AG7500-ECO Parts

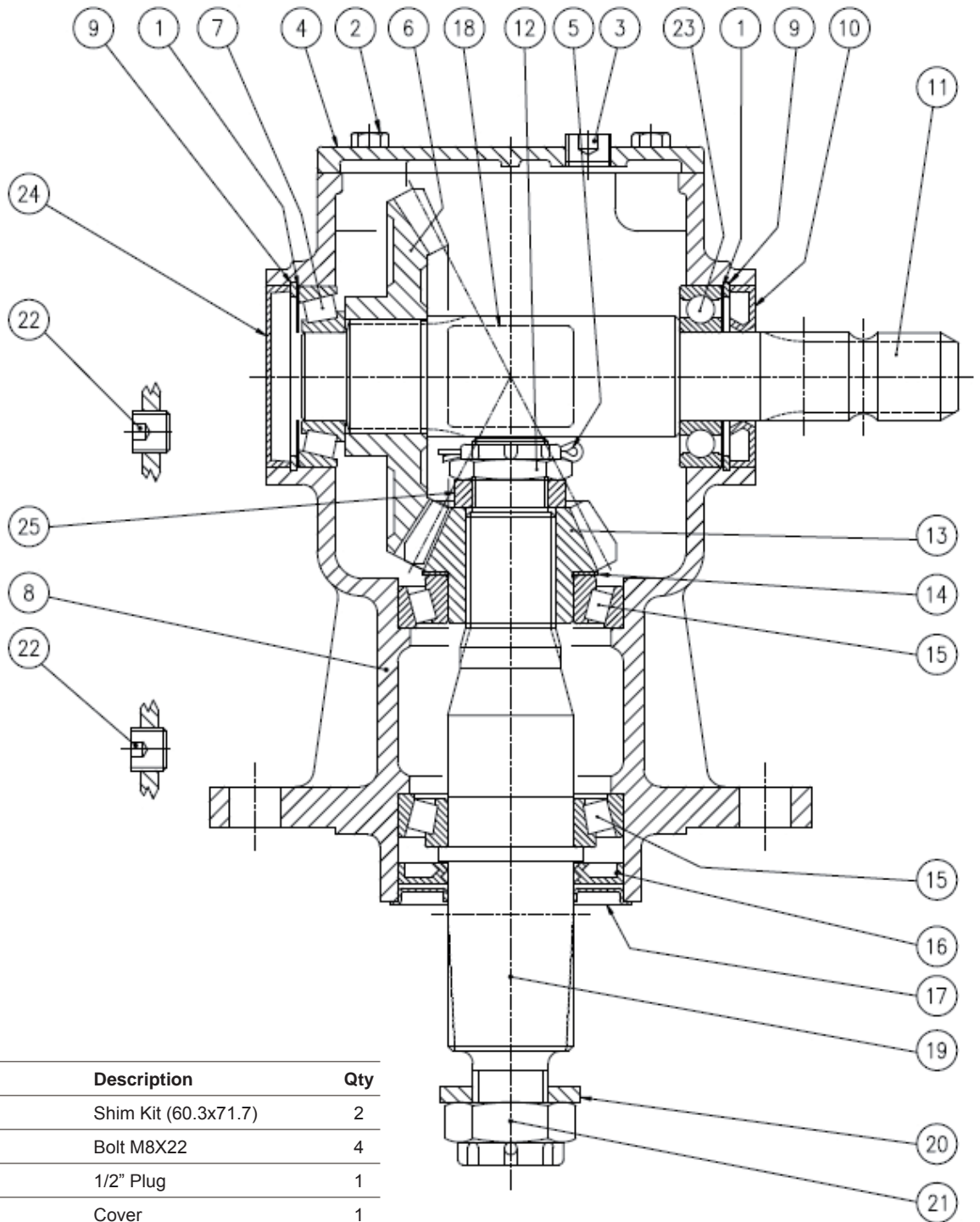
### AG7500-ECO Overview



Item	Part No	Description	Qty
1	AG8-RS020	LATCH MOUNT	1
2	AG8-RS030	ROTATION STOP	1
3	AGI-ECO-B0015	TOP SWIVEL	1
4	AGI-ECO-B0030	THREAD PLATE ASM	1
5	AGI-ECO-BGA	AGI 8000 BODY ASSY	1
6	AGI-ECO-LFGA	8000 LIFT FRAME ASSY	1
7	AGI-ECO-NOZ-GA	AGI 8000 OUTLET ASSY	1
8	AGILF030	TOP LINK EXTENSION	1
9	AGILF035	TOP LINK PIN	1
10	3546	LINCH PIN DIA 9.5	2
11	81	CAT 2 PIN DIA 25.4x110mm	1
12	AGI2RAM	AGI MKII RAM	1

Item	Part No	Description	Qty
13	FWM12	M12 FLAT WASHER	2
14	FWM16	M16 FLAT WASHER	8
15	M12	M12 NYLOC NUT	6
16	M12x30SZP	M12x30 SET BOLT	4
17	M12x35BZP	M12x35 BOLT	2
18	M16	M16 NYLOC NUT	7
19	M16x40SZP	M16x40 SET BOLT	8
20	V601060ENC12B02	V60 SHEAR BOLT	1
21	AGI-ECO-B0031	PUMP HOUSING PROTECTOR	1
22	AGI-ECO-LF022	BODY/LINKAGE BRACE	1
23	AGI-ECO-LF022_H	BODY/LINKAGE BRACE (HANDED)	1

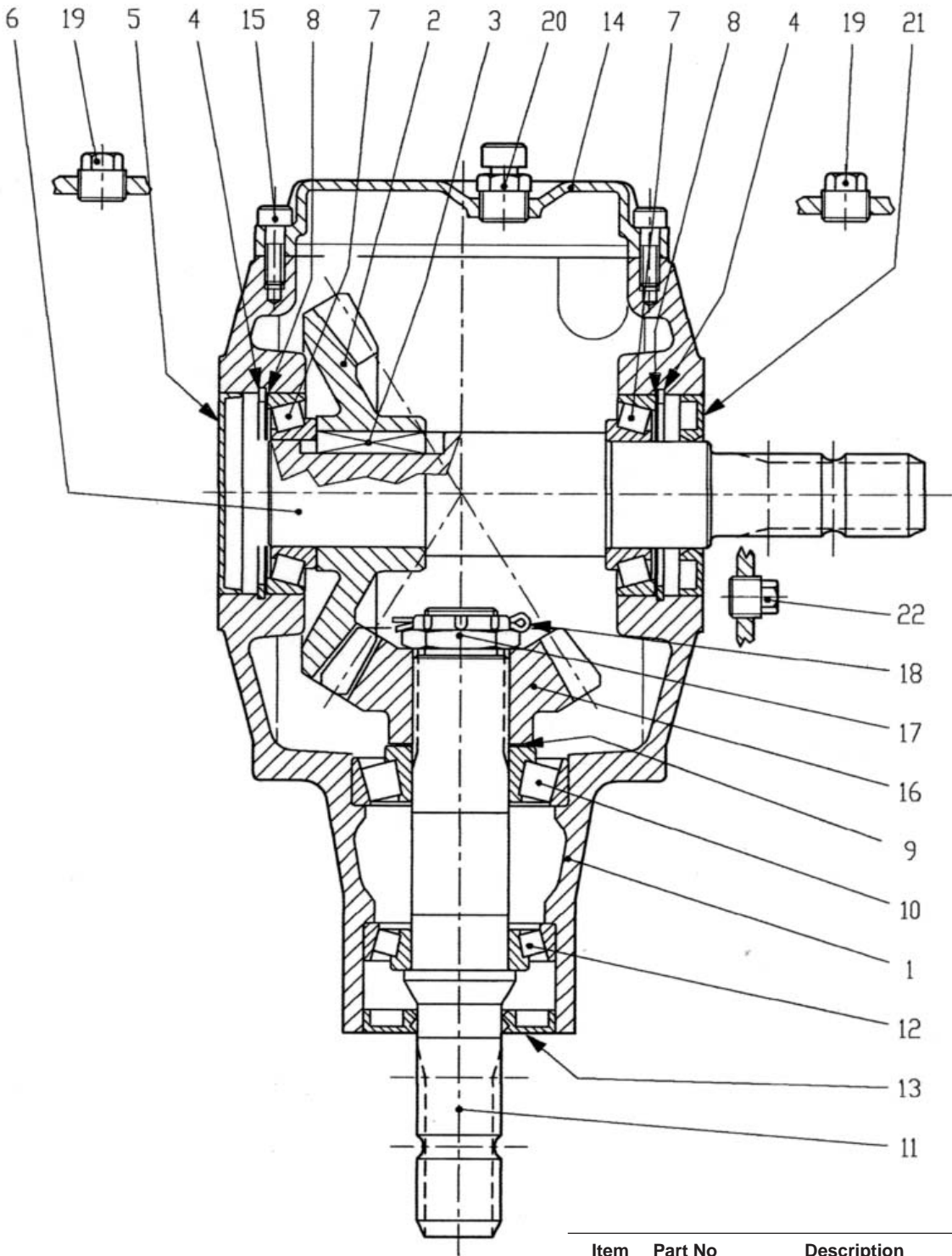
**AG7500-ECO Gearbox Breakdown LF140J - 6 SPLINE 'L' BOX RATIO 1.93**



Item	Part No	Description	Qty
1	T4A/5	Shim Kit (60.3x71.7)	2
2	8.1.1.00041	Bolt M8X22	4
3	8.6.6.00088	1/2" Plug	1
4	0.140.1302.00	Cover	1
5	8.4.7.01111	Cotter Pin	1
6	0.130.5001.00	Crown	1
7	30207	Bearing 30207	1
8	0.140.0300.00	Casting & machining	1
9	8.5.2.00131	Snap Ring (72x75x2.5)	2
10	T4A/1 (8.7.3.00055)	Oil Seal 25x72x10	1
11	0.14.2001.00	Input Shaft	1
12	0.132.7106.00	Castle Nut M30	1
13	0.116.6005.00	Pinion	1
14	0.712.7500.00	Shim kit (50.3x70.3)	1
15	8.0.9.00469	BEARING 30210	2
16	66013200 (8.7.1.01107)	Oil Seal (50x90x10)	1
17	0.139.7100.00	Washer	1

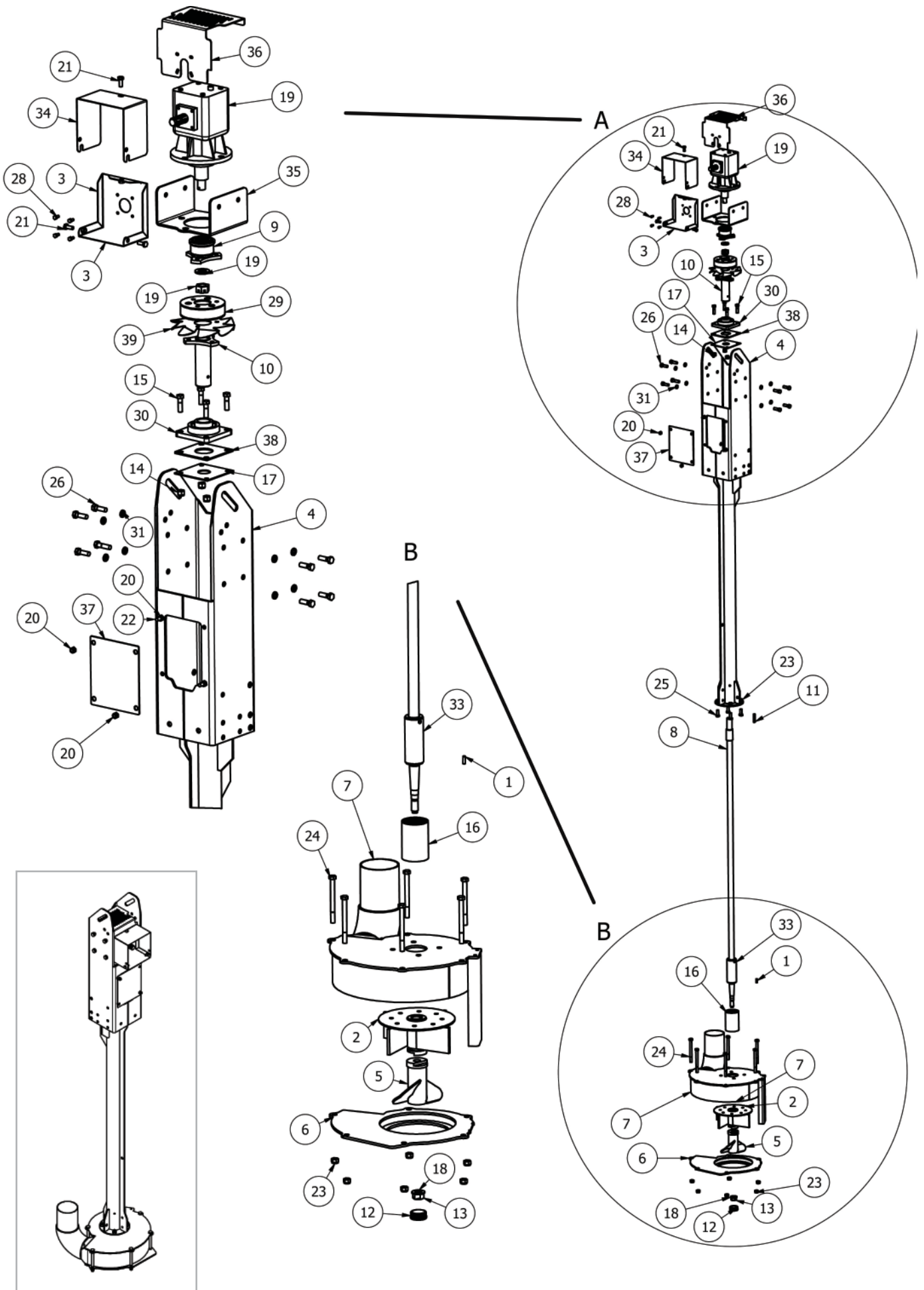
Item	Part No	Description	Qty
18	Name plate	Name Plate	1
19	0.140.3002.00	Output Shaft	1
20	0.139.7101.00	Washer	1
21	0.140.7102.00	Castle Nut M30	1
22	LF135/13 (8.6.6.00201)	3/8" Oil plug	2
23	LF135/15 (8.0.1.00870)	Bearing 6207	1
24	8.7.0.00744	Oil cap	1
25	0.132.7109.00	Spacer	1
251	0.139.700.00	Bush	1
252	8.4.7.00146	Cotter Pin	1
253	8.6.7.00269	Oil plug	1

# AG7500-ECO Gearbox Breakdown T22



Item	Part No	Description	Qty
1	0.262.0505.00	Casing	1
2	0.262.6009.00	Crown Wheel	1
3	8.4.1.00967	Parallel Key	1
4	8.5.2.00332	Snap Ring	2
5	0.121.7101.00	Cap	1
6	0.262.3000.00	Shaft	1
7	8.0.9.00143	Bearing	2
8	0.709.7500.00	Shim	2
9	0.244.7500.00	Shim Kit	1
10	8.0.9.00128	Bearing	1
11	0.262.2002.00	Shaft	1
12	T4A/13	Bearing 6208	1
13	8.7.1.00315	Double Lip Seal	1
14	0.262.1302.00	Cover	1
15	8.1.2.00197	Bolt	6
16	0.262.5009.00	Pinion	1
17	0.132.7106.00	Nut	1
18	8.4.7.01111	Cotter Pin	1
19	8.6.5.00203	Plug	2
20	8.6.7.00269	Oil Filler Plug	1
21	8.7.3.00331	Oil Seal	1
22	T4A/10	PLUG 3/8"GAS	1

# AG7500-ECO Body Assembly



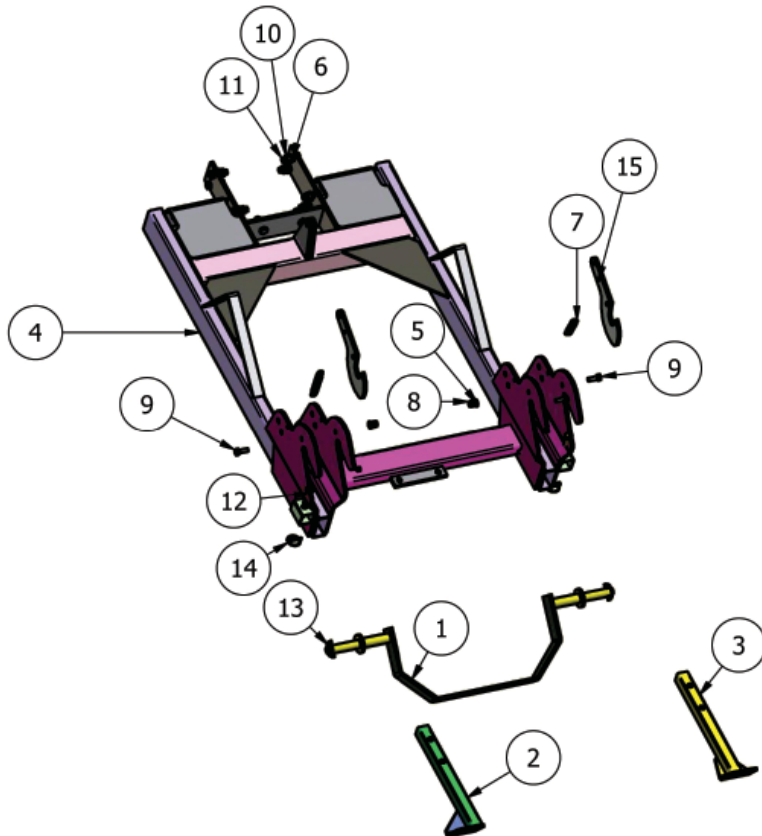


## AG7500-ECO Body Assembly - Parts List

Item	Part No	Description	Qty
1	AG44	OUTPUT SHAFT KEY	1
2	AG8-IMP001	IMPELLER (8000)	1
3	AGI-CV010	ROTOR COVER BASE	1
4	AGI-ECO-B0002	AGITATOR 8000 BODY	1
5	AGI-ECO-IM01	CHOPPER BLADE	1
6	AGI-ECO-PH005	PUMP HOUSING LWR PLATE	1
7	AGI-ECO-PHGA	8000 PUMP HOUSING	1
8	AGIDS001	DRIVE SHAFT	1
9	MG_01	GBOX UPPER DRIVE SHAFT	1
10	MG_03	LWR AGI GBOX D/SHAFT	1
11	12x08x70	12x8 PARALLEL KEY	1
12	199269	DIA 57.5-61.5mm INSERT	1
13	1FBNX	1" FINE BINX NUT	1
14	5/8F	5/8" FINE NYLOC NUT	4
15	58x214FBZP	5/8"x2 1/4" FINE BOLT	4
16	AGI-BRG2	AGI 7500 RUBBER BRG	1
17	AGIGT003	TOP GASKET	1
18	FW1	DIA 1" FLAT WASHER	1
19	LF140J - 1.93	6 SPLINE 'L' BOX RATIO 1.93	1
20	M12	M12 NYLOC NUT	4
21	M12x30SZP	M12x30 SET BOLT	3

Item	Part No	Description	Qty
22	M12x40BZP	M12x40 BOLT	2
23	M16	M16 NYLOC NUT	10
24	M16x180BZP	M16x180 BOLT	6
25	M16x40SZP	M16x40 SET BOLT	4
26	M16x50BZP	M16x50 BOLT	7
27	M16x60BZP	M16x60 BOLT	1
28	M8x16SZP	M8x16 SET BOLT	4
29	MJRC-113	113 PCD RUBBER COUPLING	1
30	S60132335	AGI 7500 YOKE	1
31	SF2	DIA 2" FLANGE BRG	1
32	SW58	5/8" SPRING WASHER	8
33	T262068	6 SPLINE 'L' BOX RATIO 1.6	1
34	AGIBH006	BEARING SHAFT	1
35	AG8-BY031	GBOX SPACER	4
36	AGI-CV020	ROTOR BOX COVER	1
37	AGI-ECO-B0035	NEW GEARBOX MOUNT	1
38	AGI-ECO-B0037	GEARBOX HEAT SHIELD	1
39	AGIMF031	FRONT ACCESS PLATE	1
40	AGIMF032	BRG GASKET PLATE	1
41	MG_04	GEARBOX FAN	1

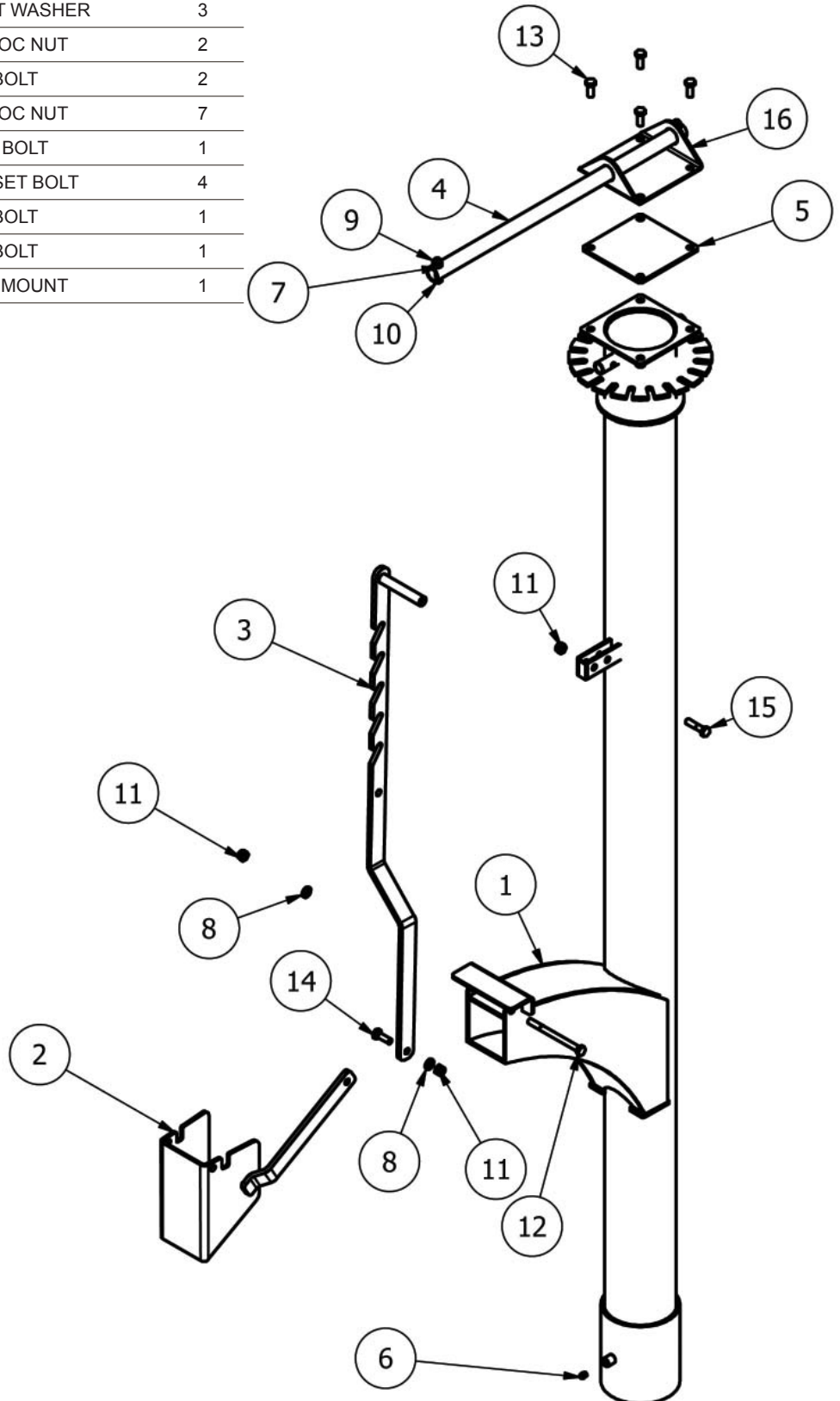
## AG7500-ECO Lift Frame Assembly



Item	Part No	Description	Qty
1	AG8-QH001	QUICK HITCH LINKAGE	1
2	AG8-STD001	STAND	1
3	AG8-STD001H	STAND	1
4	AGI-ECO-LF001	ECO AGI LIFT FRAME	1
5	FWM12	M12 FLAT WASHER	2
6	FWM16	M16 FLAT WASHER	10
7	GM9/3	AGITATOR SPRING	2
8	M12	M12 NYLOC NUT	2
9	M12x35BZP	M12x35 BOLT	3
10	M16	M16 NYLOC NUT	10
11	M16x50BZP	M16x50 BOLT	10
12	S15010	CAT 0 PIN DIA 16x54mm	2
13	S3546	LINCH PIN DIA 9.5	2
14	S37	LINCH PIN DIA 6	2
15	AGI-PF2	LINKAGE MOUNT LOCK	2

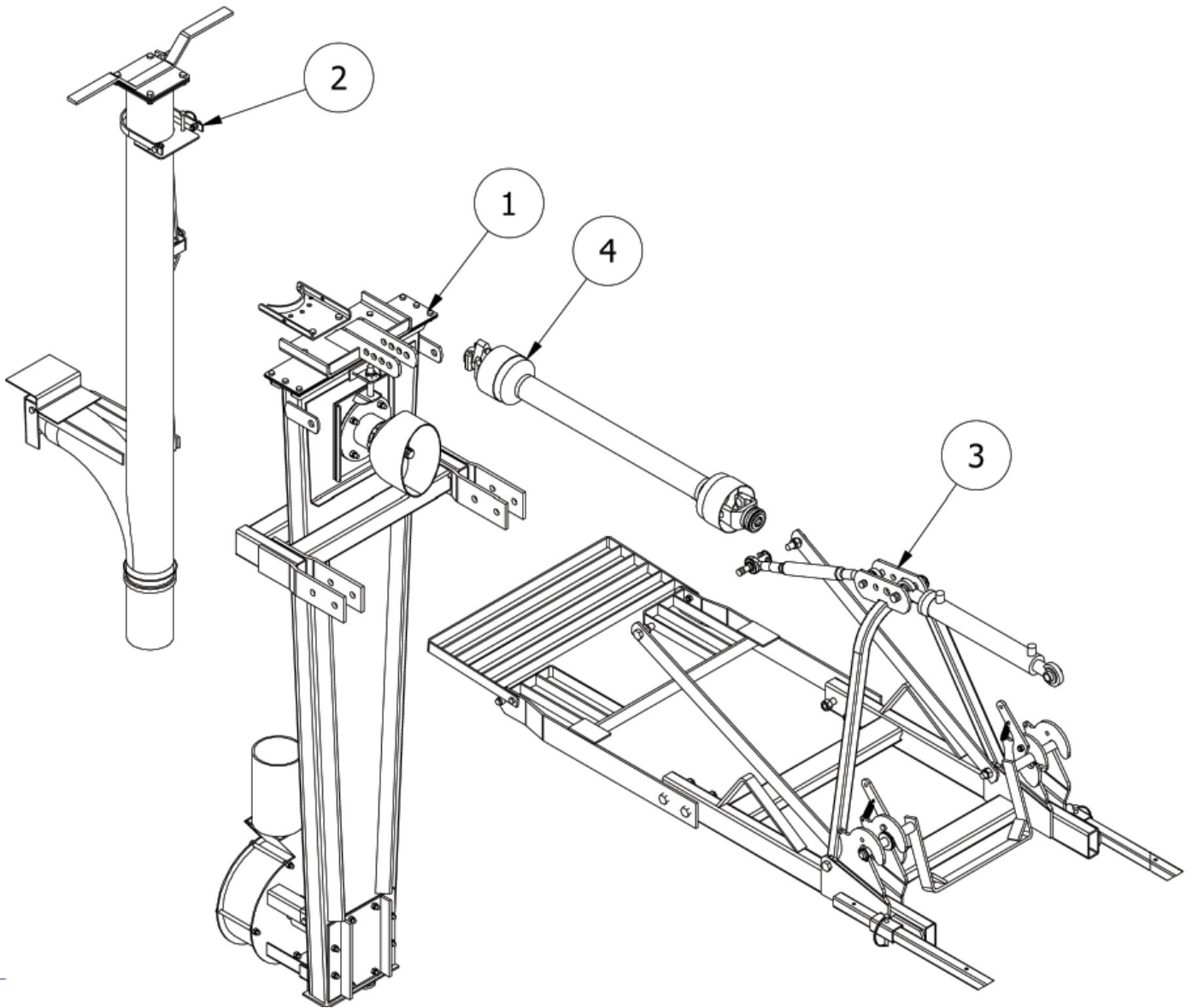
## AG7500-ECO Outlet Assembly

Item	Part No	Description	Qty
1	AGI-ECO-NOZ-01	TOP FILL OUTLET	1
2	AGI-ECO-NOZ-10	NOZZLE FLAP ASM	1
3	AGI-ECO-NOZ-32	NOZZLE HANDLE ASM	1
4	AGIOP041	SWIVEL HANDLE	1
5	3722160	6" FLANGE BLANK SEAL	1
6	820	GREASE NIPPLE 1/8" STR	1
7	FWM10	M10 FLAT WASHER	2
8	FWM12	M12 FLAT WASHER	3
9	M10	M10 NYLOC NUT	2
10	M10x50BZP	M10x50 BOLT	2
11	M12	M12 NYLOC NUT	7
12	M12x150BZP	M12x150 BOLT	1
13	M12x30SZP	M12x30 SET BOLT	4
14	M12x35BZP	M12x35 BOLT	1
15	M12x50BZP	M12x50 BOLT	1
16	AGIOP080	HANDLE MOUNT	1



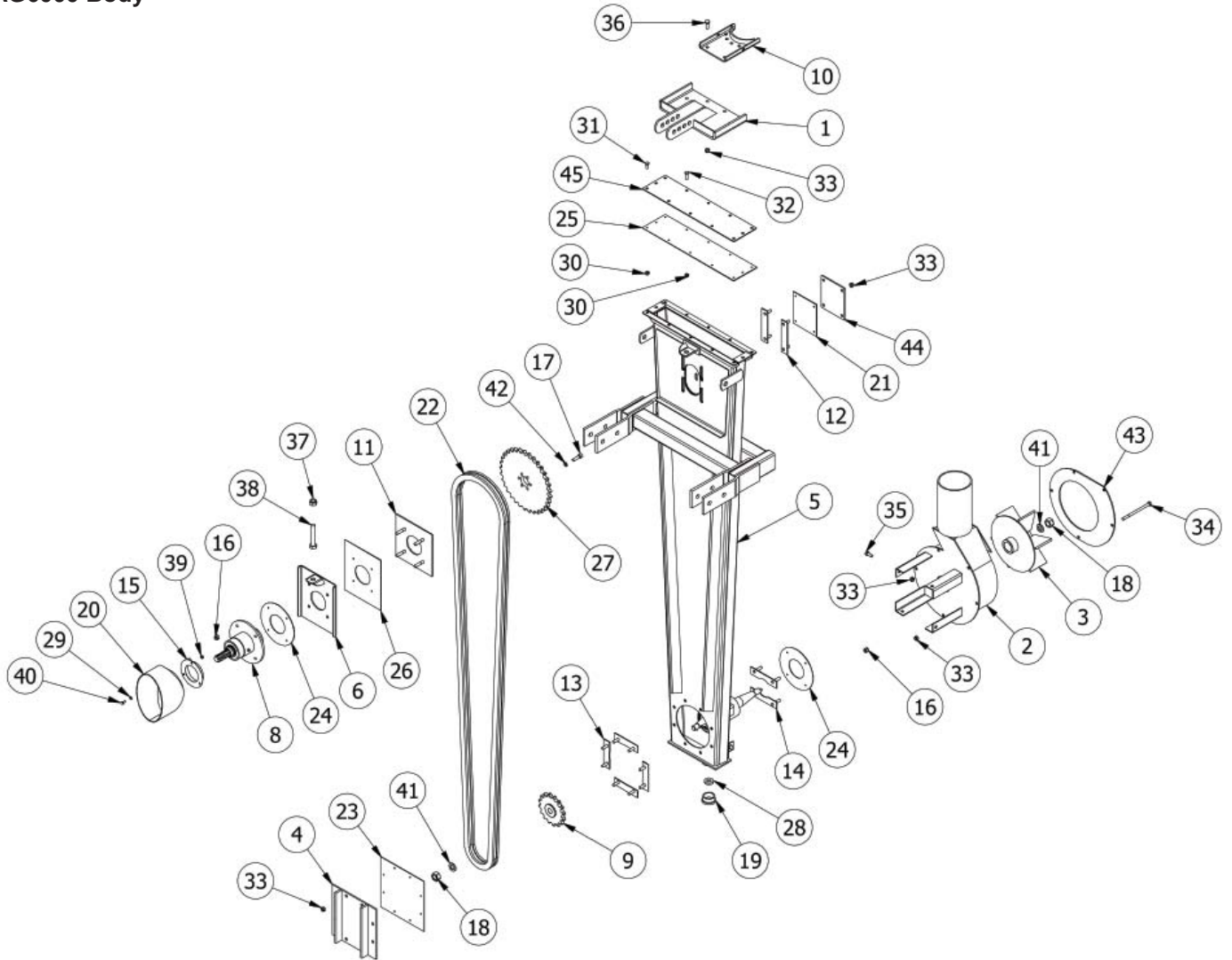
# AG6000 Agitator Parts

## AG6000 Overview



Item	Part No	Description	Qty
1	AGI-06BGA	6ft BODY ASSEMBLY	1
2	AGI-06OPGA	6ft AGITATOR OUTLET ASSY	1
3	AGI-MF1	MOUNT FRAME ASSY	1
4	V601060ENC12B02	V60 SHEAR BOLT	1

# AG6000 Body



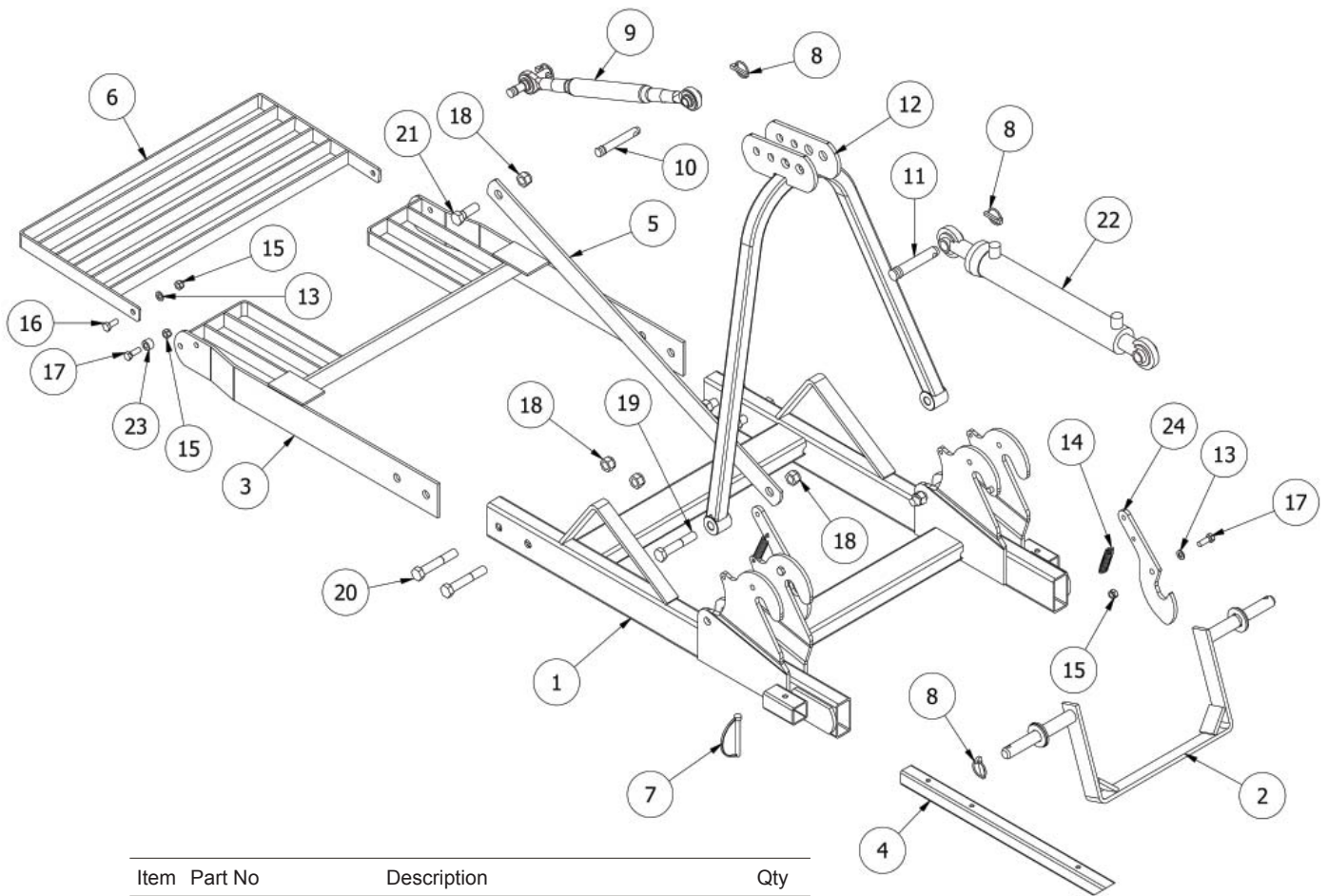
Item	Part No	Description	Qty
1	AF1-TLB	TOP LINK BRKT	1
2	AG10B	PUMP HOUSING	1
3	AG12AC	IMPELLER (Chain)	1
4	AG14B1	OUTPUT ACCESS COVER	1
5	AG15S	6ft AGITATOR BODY	1
6	AG24	ADJUSTER HOUSING	1
7	AG805C	OUTPUT HOUSING (TAPER BRG)	1
8	AG807D	INPUT HOUSING (TAPER BRG)	1
9	AG809A	IMPELLER SPROCKET	1
10	AGI-PSB	PIPE SWIVEL BRKT	1
11	AGT1	INPUT REINF' PLATE	1
12	AGT2	BOLT PLT TOP ACCESS	2
13	AGT3	BOLT PLT ACCESS COVER	4
14	AGT4	BOLT PLT PUMP HOUSE	2
15	PSP-PTOC	PTO COVER	1
16	1/2F	1/2" FINE NYLOC NUT	8
17	12x134FSKS	1/2"x1 3/4" FINE SOCKET HEAD 12.9	6
18	1/FBNX	1" FINE BINX NUT	2
19	3772021	2" BSP PLUG	2
20	8SM11/2	PTO GUARD (OVAL)	1
21	AG20A	INPUT ACCESS GASKET	1
22	AGI-06CHN	6ft AGITATOR DRIVE CHAIN	1
23	AGS20B	ACCESS COVER GASKET	1

Item	Part No	Description	Qty
24	AGS21B	IMPELLER HOUSING GASKET	2
25	AGS21C	TOP COVER GASKET	1
26	AGS53	PUMP HOUSING GASKET	1
27	ASA100-33Z	1 1/4" SIMPLEX 33T SPRKT	1
28	FE092A-M	MAGNET (AGITATOR)	1
29	FWM8	M8 FLAT WASHER	3
30	M10	M10 NYLOC NUT	12
31	M10x25SZP	M10x25 SET BOLT	6
32	M10x35SZP	M10x35 SET BOLT	6
33	M12	M12 NYLOC NUT	23
34	M12x180BZP	M12x180 BOLT	5
35	M12x30SZP	M12x30 SET BOLT	4
36	M12x35BZP	M12x35 BOLT	2
37	M20	M20 NYLOC NUT	1
38	M20x120SZP	M20x120 SET BOLT	1
39	M8	M8 NYLOC NUT	3
40	M8x16SZP	M8x16 SET BOLT	3
41	SW1	1" SPRING WASHER	2
42	SW12	1/2" SPRING WASHER	6
43	AG10	PUMP COVER	1
44	AG14A	INPUT ACCESS COVER	1
45	AG16	TOP COVER (BODY)	1





## AG6000 Mount Frame Assembly

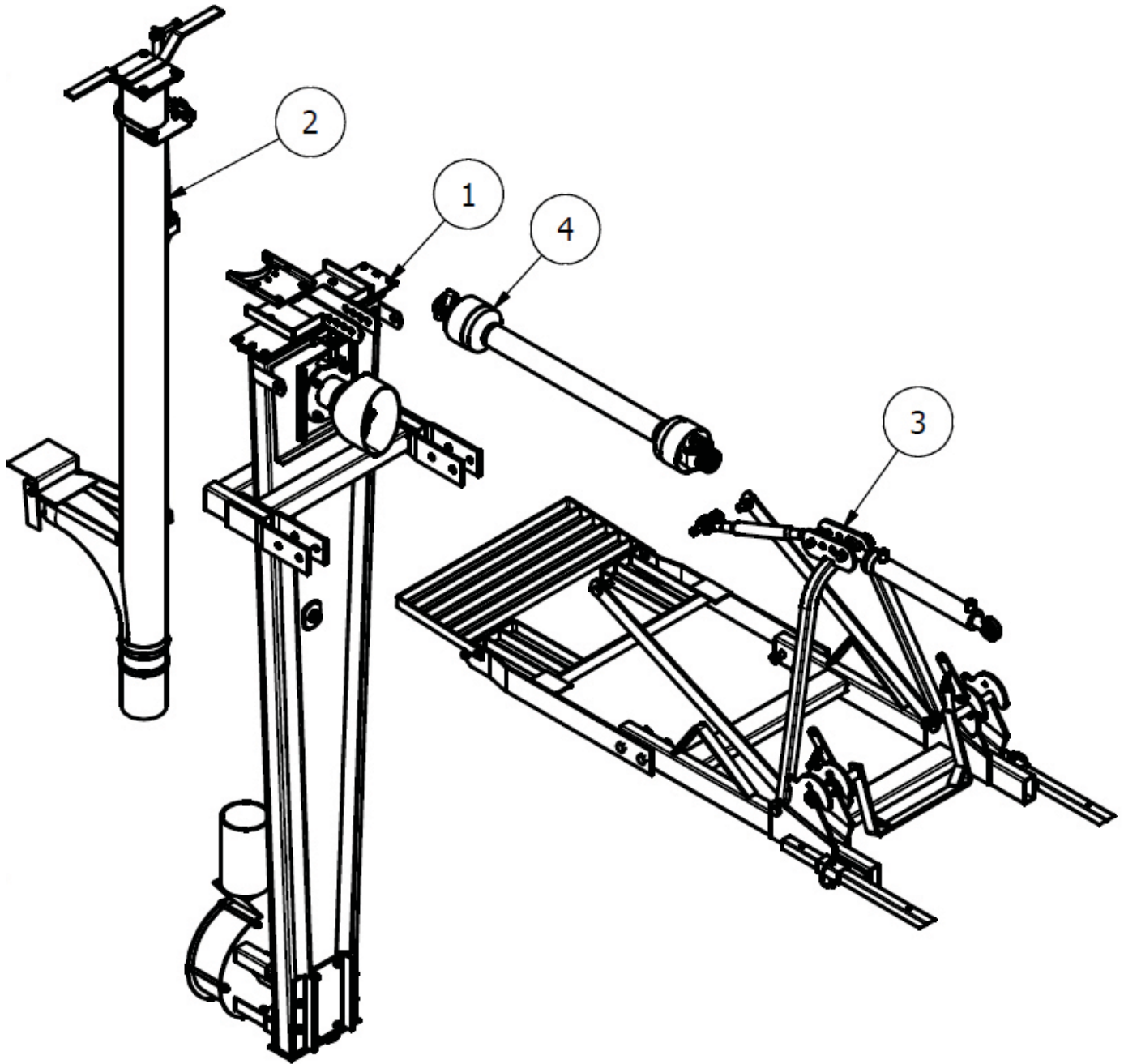


Item	Part No	Description	Qty
1	AG4/1	LIFT FRAME FAB	1
2	AGI-LFB	LOWER LINKAGE	1
3	AGI-PLFM01	PLATFORM	1
4	AGI-SD1	STAND	2
5	AGI-TSP	TRANSPORT STRAP	2
6	AGIPL015	AGI PLATFORM	1
7	272	SHAFT LOCK PIN DIA 11	2
8	3546	LINCH PIN DIA 9.5	5
9	49312	CAT 1-1 TOP LINK	1
10	74	CAT 1 PIN DIA 19x102mm	2
11	81	CAT 2 PIN DIA 25.4x110mm	1
12	AG5	AGI A-FRAME	1
13	FWM12	M12 FLAT WASHER	4
14	GM9/3	AGITATOR SPRING	2
15	M12	M12 NYLOC NUT	6
16	M12x30SZP	M12x30 SET BOLT	2
17	M12x35BZP	M12x35 BOLT	4
18	M20	M20 NYLOC NUT	8
19	M20x110BZP	M20x110 BOLT	2
20	M20x120BZP	M20x120 BOLT	4
21	M20x60BZP	M20x60 BOLT	2
22	TLRAM	TOP LINK RAM	1
23	12T-BBS	BLADE BACK SPACER	2
24	AGI-PF2	LINKAGE MOUNT LOCK	2



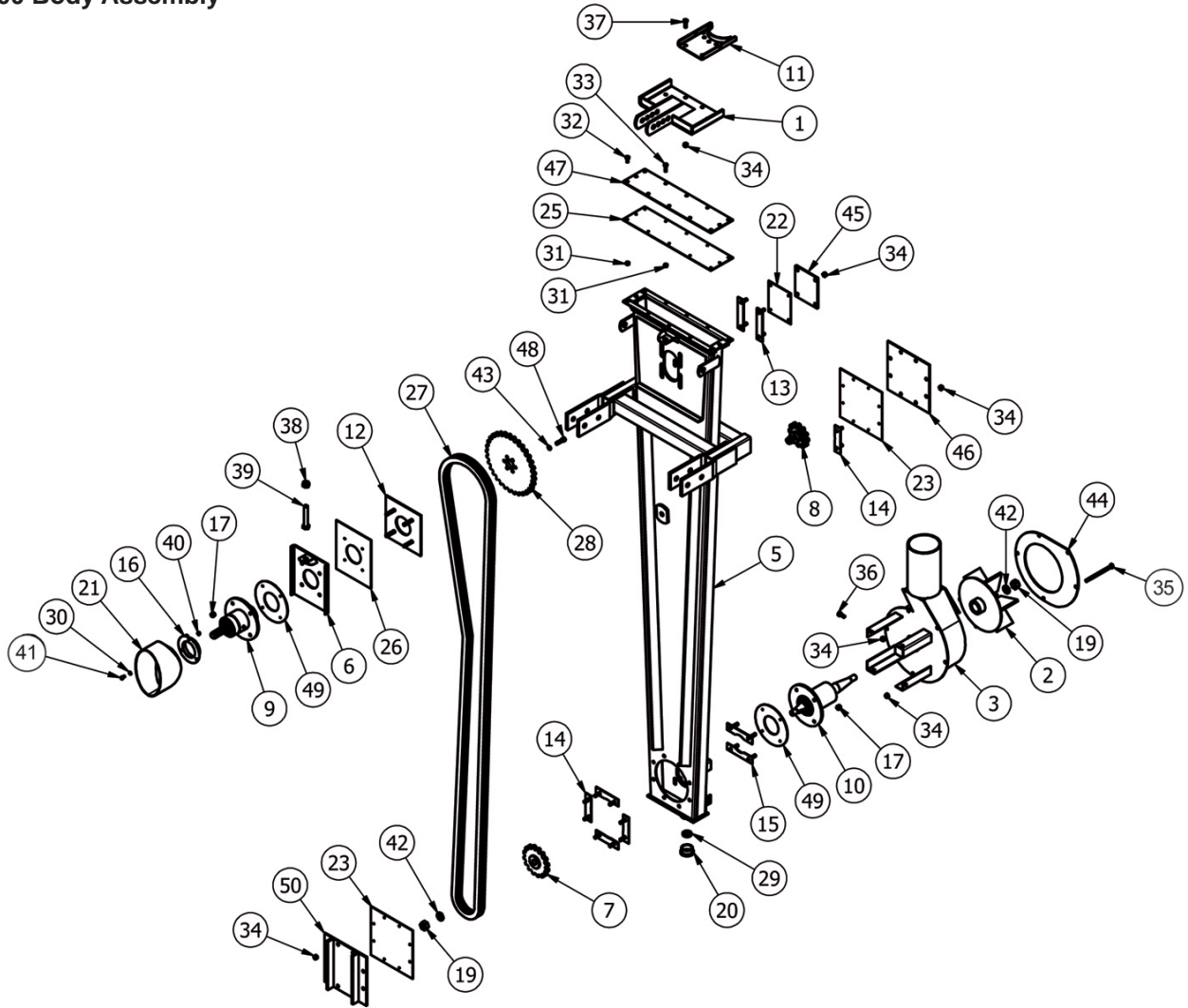
# AG8000 Agitator Parts

## AG8000 Overview



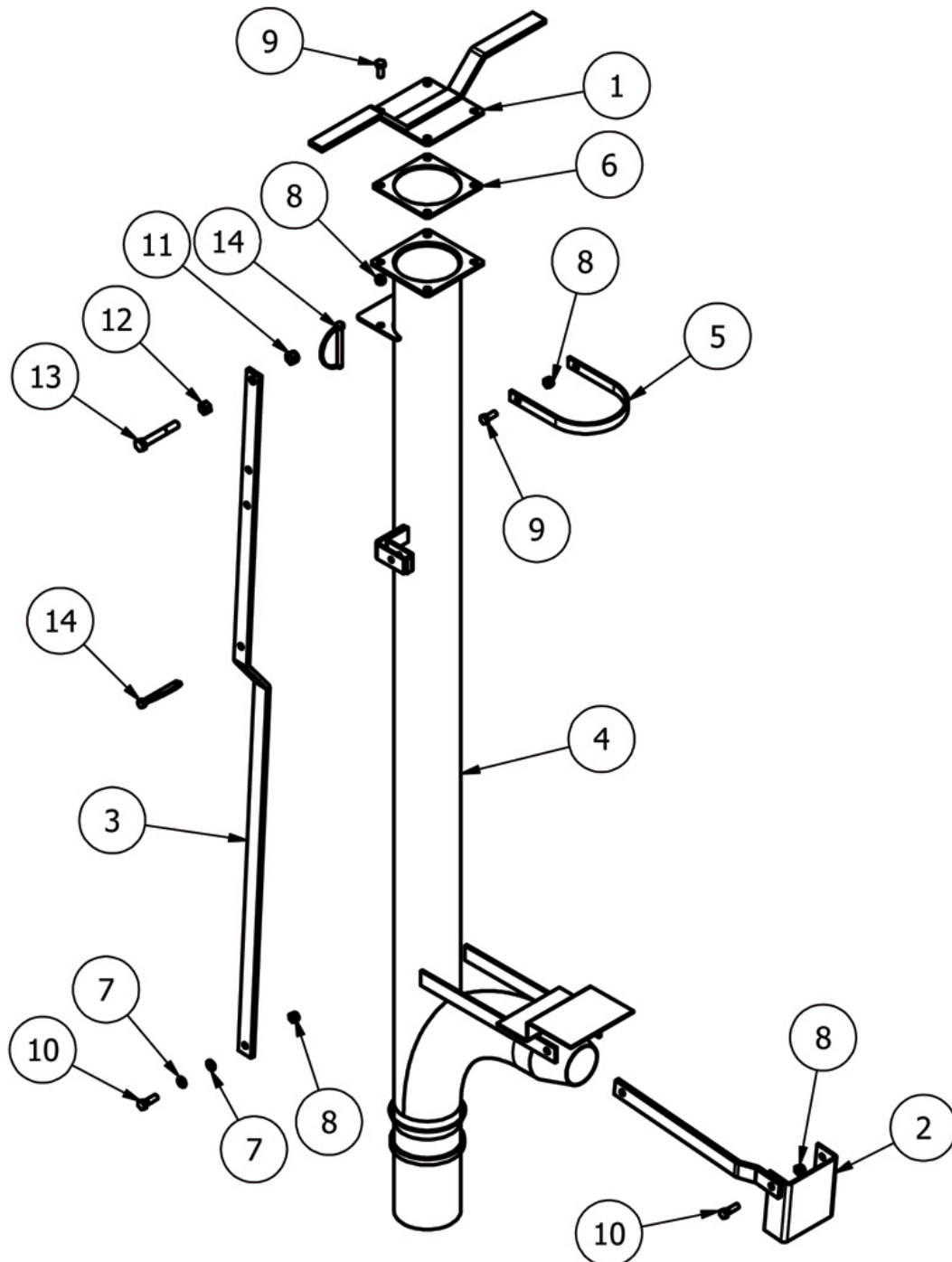
Item	Part No	Description	Qty
1	AGI-08BGA	8ft BODY ASSEMBLY	1
2	AGI-08OPGA	8ft AGITATOR OUTLET ASSY	1
3	AGI-MF1	MOUNT FRAME ASSY	1
4	V601060ENC12B02	V60 SHEAR BOLT	1

# AG8000 Body Assembly



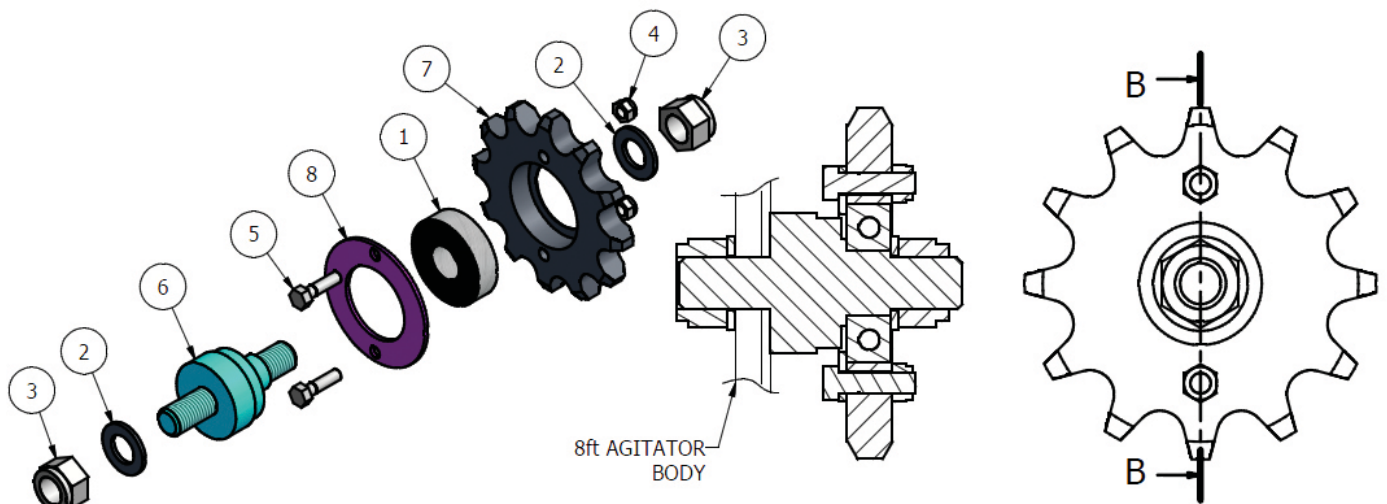
Item	Part No	Description	Qty	Item	Part No	Description	Qty
1	AF1-TLB	TOP LINK BRKT	1	28	ASA100-33Z	1 1/4" SIMPLEX 33T SPRKT	1
2	AG-2AC	IMPELLER (Chain)	1	29	FE092BA-M	MAGNET (AGITATOR)	1
3	AG-10B	PUMP HOUSING	1	30	FWM8	M8 FLAT WASHER	3
5	AG15L	8ft AGITATOR BODY	1	31	M10	M10 NYLOC NUT	12
6	AG24	ADJUSTER HOUSING	1	32	M10x25SZP	M10x25 SET BOLT	6
7	AG809C	IMPELLER SPROCKET	1	33	M10x35SZP	M10x35 SET BOLT	6
8	AGI-IDLR	IDLER SPRKT ASSY	1	34	M12	M12 NYLOC NUT	31
9	AG807D	INPUT HOUSING (TAPER BRG)	1	35	M12x180BZP	M12x180 BOLT	5
10	AG805C	OUTPUT HOUSING (TAPER BRG)	1	36	M12x30SZP	M12x30 SET BOLT	4
11	AGI-PSB	PIPE SWIVEL BRKT	1	37	M12x35BZP	M12x35 BOLT	2
12	AGT1	INPUT REINF" PLATE	1	38	M20	M20 NYLOC NUT	1
13	AGT2	BOLT PLT TOP ACCESS	2	39	M20x120SZP	M20x120 SET BOLT	1
14	AGT3	BOLT PLT ACCESS COVER	8	40	M8	M8 NYLOC NUT	3
15	AGT4	BOLT PLT PUMP HOUSE	2	41	M8x16SZP	M8x16 SET BOLT	3
16	PSP-PTOC	PTO COVER	1	42	SW1	1" SPRING WASHER	2
17	1/2F	1/2" FINE NYLOC NUT	8	43	SW12	1/2" SPRING WASHER	6
19	1FBNX	1" FINE BINX NUT	2	44	AG10	PUMP COVER	1
20	2_PLUG	2" BSP PLUG	2	45	AG14A	INPUT ACCESS COVER	1
21	8SM11-2	PTO GUARD (OVAL)	1	46	AG14B	ACCESS COVER (BODY)	1
22	AGS20A	INPUT ACCESS GASKET	1	47	AG16	TOP COVER (BODY)	1
23	AG20BC	ACCESS COVER GASKET	2	48	12x134FSKS	1/2"x1 3/4" FINE SOCKET HEAD 12.9 6	6
25	AGS21C	TOP COVER GASKET	1	49	AGS21B	IMPELLER HOUSING GASKET	2
26	AGS53	PUMP HOUSING GASKET	1	50	AG14B1	OUTPUT ACCESS COVER	1
27	AGI-08CHN	8ft AGITATOR DRIVE CHAIN	1				

## AG8000 Outlet Assembly



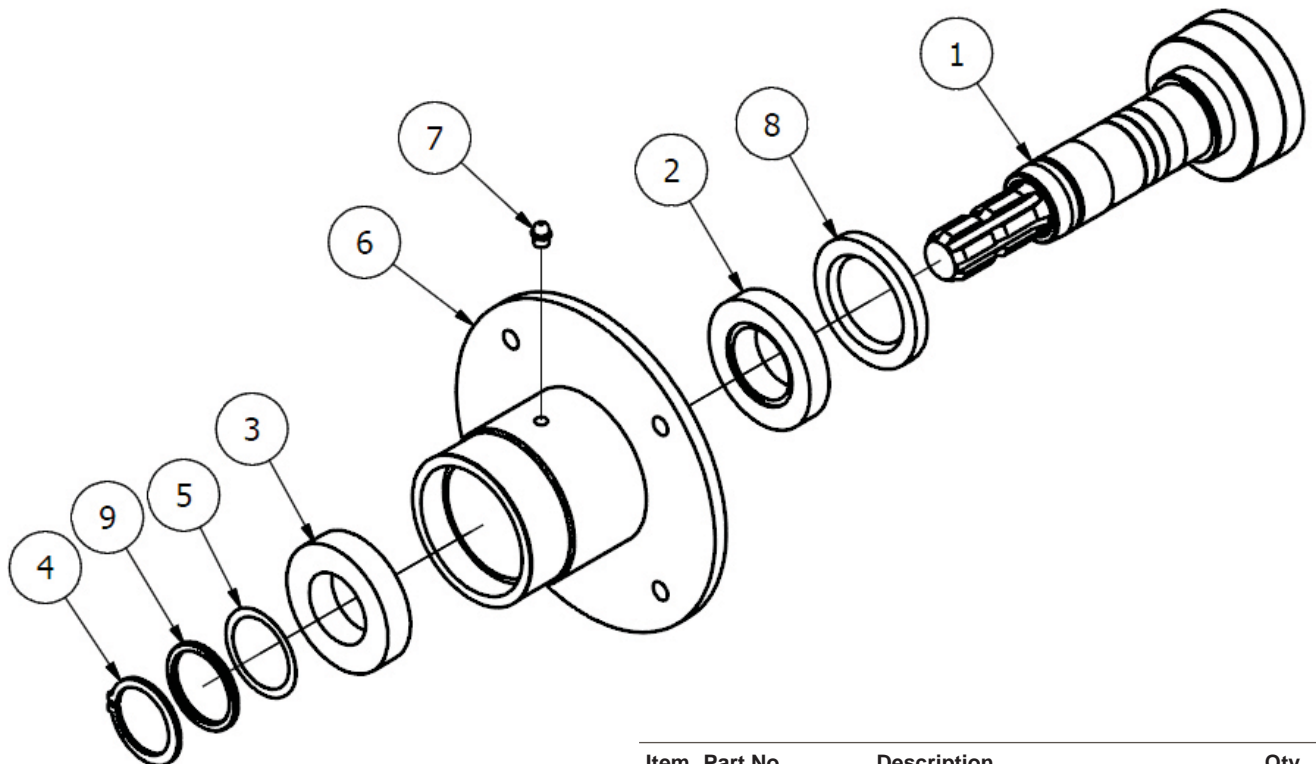
Item	Part No	Description	Qty
1	AG16B	OUTLET HANDLE	1
2	AG396	CONTROL FLAP	1
3	AG456D	8ft CONTROL ARM	1
4	AG508S	8ft OUTLET PIPE	1
5	AGS	OUTLET PIPE STRAP	1
6	3722161	6" PIPE FLANGE SEAL	1
7	FWM12	M12 FLAT WASHER	2
8	M12	M12 NYLOC NUT	9
9	M12x30SZP	M12x30 SET BOLT	6
10	M12x40BZP	M12x40 BOLT	3
11	M16	M16 NYLOC NUT	1
12	M16HEX	M16 PLAIN NUT	1
13	M16x110BZP	M16x110 BOLT	1
14	272	SHAFT LOCK PIN DIA 11	2

## AG8000 Idler Sprocket Assembly



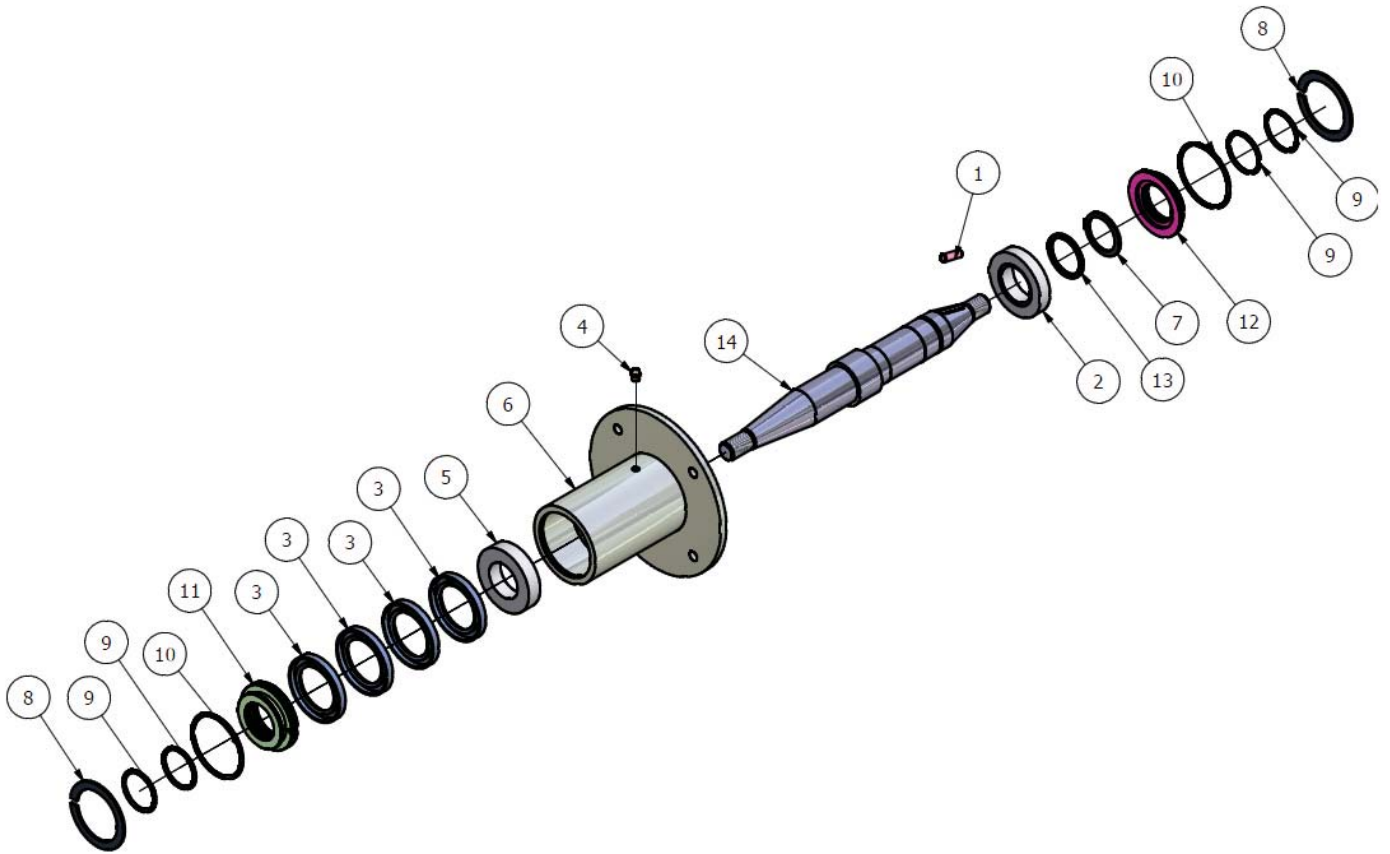
Item	Part No	Description	Qty
1	63052RS	62x25x17 DEEP GROOVE	1
2	FWM20	M20 FLAT WASHER	2
3	M20	M20 NYLOC NUT	2
4	M8	M8 NYLOC NUT	2
5	M8x30BZP	M8x30 BOLT	2
6	AGI-3	IDLER SPINDLE	1
7	ASA100-12	1 1/4" SIMPLEX 12T SPRKT	1
8	AGI-IDLRRP	IDLER RETAINING PLATE	1

## AG6000 and AG8000 Input Housing Assembly



Item	Part No	Description	Qty
1	AG807-TB	INPUT SHAFT (TAPER BRG)	1
2	30210A	TAPER BRG 90x50x21.75	1
3	6210RS	90x50x20 DEEP GROOVE	1
4	AGC2	DIA 50 EXT HEAVY CIRCLIP	1
5	E506225	SHIM 62x50x0.25	1
6	MOA-IBH	INPUT BRG HOUSING (GS 40)	1
7	820	GREASE NIPPLE 1/8" STR	1
8	60X90X10	SEAL 60x90x10	1
9	AG50-SP	TOP HOUSING SPACER	1

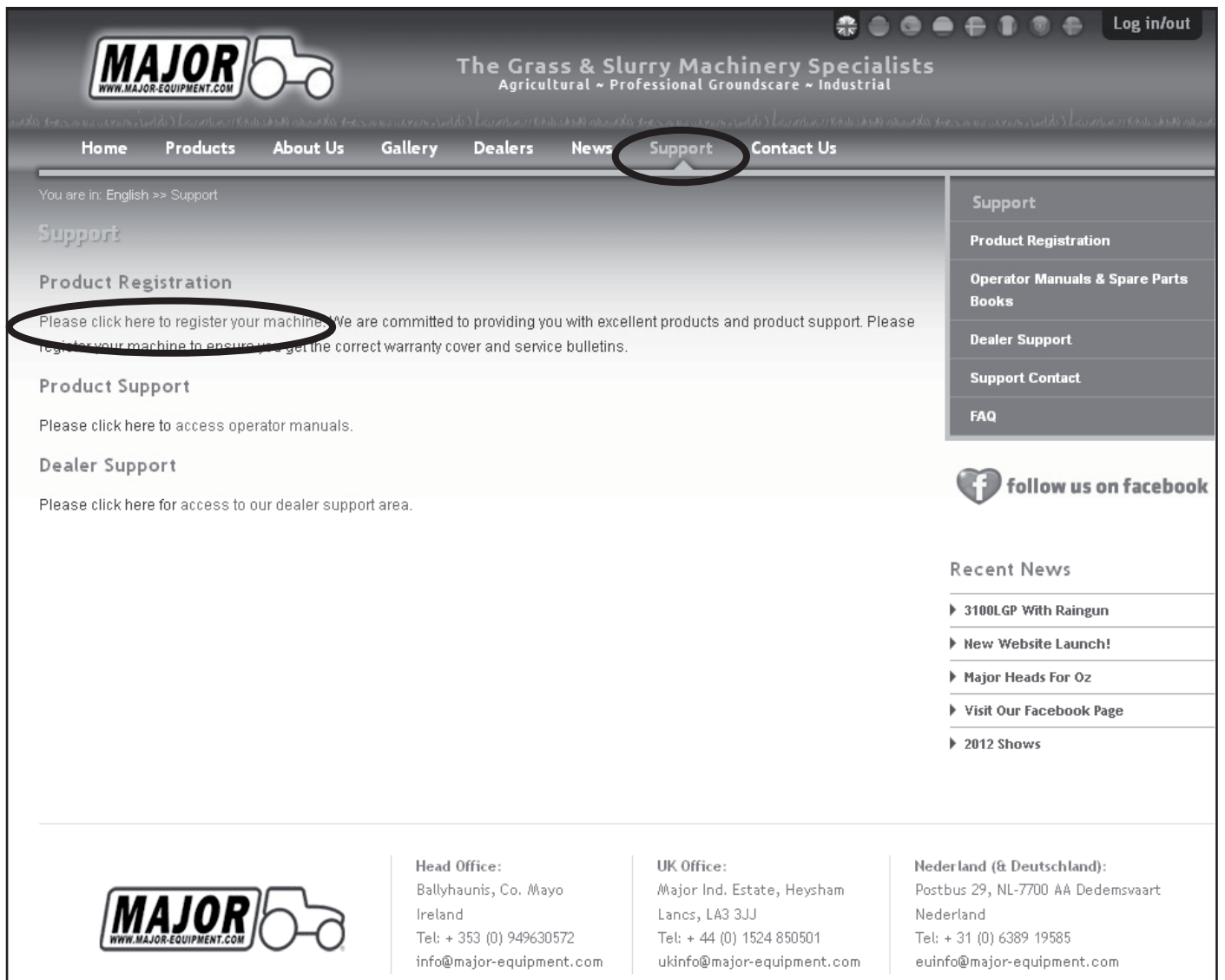
## AG6000 and AG8000 Output Housing Assembly



Item	Part No	Description	Qty
1	AG44	OUTPUT SHAFT KEY	1
2	30210A	TAPER BRG 90x50x21.75	1
3	60X90X10	SEAL 60x90x10	4
4	820	GREASE NIPPLE 1/8" STR	1
5	6210	90x50x20 DEEP GROOVE	1
6	AG-IBH	IMPELLER BRG HOUSING	1
7	AGC2	DIA 50 EXT HEAVY CIRCLIP	1
8	AGC3	DIA 90 INT CIRCLIP	2
9	OR50-4	O RING DIA 50x4mm	4
10	OR82-4	O RING DIA 82x4mm	2
11	AG36	OUTSIDE SEAL BOX (OUTPUT)	1
12	AG36A	INSIDE SEAL BOX (OUTPUT)	1
13	AG50-SP	TOP HOUSING SPACER	1
14	AG809B	IMPELLER SHAFT	1



Warranty: This machine is guaranteed for 12 months. No warranty is given where the machine is being used as a hire machine. Warranty is against faulty workmanship or parts, with the exception of components not of MAJOR'S manufacture or design, i.e. hydraulic components, universally jointed shafts, chains and tyres, etc., which are subject to the original manufacturers conditions. To register your machine for warranty, please go to the support section of our website www.major-equipment.com and enter your details.



**MAJOR**  
WWW.MAJOR-EQUIPMENT.COM

The Grass & Slurry Machinery Specialists  
Agricultural ~ Professional Groundscare ~ Industrial

Home Products About Us Gallery Dealers News **Support** Contact Us

You are in: English >> Support

### Support

#### Product Registration

Please click here to register your machines. We are committed to providing you with excellent products and product support. Please register your machine to ensure you get the correct warranty cover and service bulletins.

#### Product Support


Please click here to access operator manuals.

#### Dealer Support

Please click here for access to our dealer support area.

**Support**

- Product Registration
- Operator Manuals & Spare Parts Books
- Dealer Support
- Support Contact
- FAQ

 follow us on facebook

#### Recent News

- ▶ 3100LGP With Raingun
- ▶ New Website Launch!
- ▶ Major Heads For Oz
- ▶ Visit Our Facebook Page
- ▶ 2012 Shows

**MAJOR**  
WWW.MAJOR-EQUIPMENT.COM

**Head Office:**  
Ballyhaunis, Co. Mayo  
Ireland  
Tel: + 353 (0) 949630572  
info@major-equipment.com

**UK Office:**  
Major Ind. Estate, Heysham  
Lancs, LA3 3JJ  
Tel: + 44 (0) 1524 850501  
ukinfo@major-equipment.com

**Nederland (& Deutschland):**  
Postbus 29, NL-7700 AA Dedemsvaart  
Nederland  
Tel: + 31 (0) 6389 19585  
euinfo@major-equipment.com





**HEAD OFFICE**

**Major Equipment Intl Ltd**  
Ballyhaunis, Co Mayo  
Ireland  
Tel: +353 (0) 9496 30572

**UK OFFICE**

**Major Equipment Ltd**  
Major Ind. Estate, Heysham,  
Lancs, LA3 3JJ, UK  
Tel: +44 (0) 1524 850501

**Netherlands & Germany OFFICE**

**Major Equipment Intl Ltd**  
Postbus 29, NL-7700 AA  
Dedemsvaart, Nederland  
Tel: + 31 (0) 6389 19585