



**CONTOURA MJ76-360**

**Operator's Manual  
and Parts List**



**WARNING**

Read this instruction manual thoroughly before using your machine and follow all safety precautions.

[www.major-equipment.com](http://www.major-equipment.com)

## Head Office

Major Equipment Intl. Ltd.  
Ballyhaunis,  
Co. Mayo,  
Ireland.

Tel.: +353 (0) 9496 30572  
Fax: +353 (0) 9496 30788  
Email: [info@major-equipment.com](mailto:info@major-equipment.com)

## UK Office

Major Equipment Ltd.  
Major Industrial Estate,  
Middleton Rd.,  
Heysham,  
Lancs.  
LA3 3JJ

Tel.: +44 (0) 1524 850 501  
Fax: +44 (0) 1524 850 502  
Email: [ukinfo@major-equipment.com](mailto:ukinfo@major-equipment.com)

## NETHERLANDS & GERMANY OFFICE

Major Equipment Intl. Ltd.  
Postbus 29,  
NL-7700 AA ,  
Dedemsvaart,  
Nederland.

Tel: +31 (0) 6389 19585  
Email: [euinfo@major-equipment.com](mailto:euinfo@major-equipment.com)

Web: [www.major-equipment.com](http://www.major-equipment.com)

@MAJOREQUIPMENT



## Disclaimer

While every effort has been made in the production of this manual to ensure that the information contained herein is full and correct, Major assumes no responsibility for errors or omissions.

Major reserves the right to modify the machinery and the technical data contained within the manual without prior notice.

Further to this, Major assumes no liability for any damages which may result from the use of the information contained within this manual.

## Contents

# Introduction

Thank you	1
Safety Aspects	1
Intended use	1
Register Your Product and Warranty Online	1
Tractor Requirements	2

# Safety

Hazards associated with operating Grass Cutting Machinery	2
Operating Safely	3
Workstation	4
Regulations for use of the transmission	4
PTO Shaft Safety	4
Driving Safely on Public Roads	5
Inspections before Use	6
Starting Regulations	6

# Product Identification

Machine Serial Numbers	7
Product Specifications	7
EEC certificate of conformity for machines	8
Machine Safety Labels	9
Key to Main Parts	10
Blade Rotation	11
Blade system	12
Drive-line gearboxes	12

# Operating the Machine

Attaching machine to the Tractor	13
Transport Position	14
Operating the Machine/Mowing	15
Roller and Castor wheels adjustment	16

# Maintenance

Machine storage	17
PTO Shaft Maintenance	17
Transmission Bolts	18
Roller <i>(if applicable)</i>	18
Replacement of wear parts	18
Clearing out a blockage	18
Wing shafts alignment <i>(if applicable)</i>	18
Troubleshooting	19
Lubrication schedule	21

# MJ76 Contoura Spare Parts

<b>MJ76-360 General Assembly</b>	<b>22</b>
<b>MJ76-360 General Assembly - Parts list</b>	<b>26</b>
<b>MJ76 Rear deck (MJ76-360-RDGA01)</b>	<b>27</b>
<b>MJ76 Rear deck (MJ76-360-RDGA01) - Parts list</b>	<b>29</b>
<b>MJ76-360 Left wing (MJ76-360-WGGA02)</b>	<b>30</b>
<b>MJ76-360 Left wing (MJ76-360-WGGA02) - Parts list</b>	<b>32</b>
<b>MJ76-360 Right wing (MJ76-360-WGGA01)</b>	<b>33</b>
<b>MJ76-360 Right wing (MJ76-360-WGGA01) - Parts list</b>	<b>35</b>
<b>MJ76-360 Hydraulics</b>	<b>36</b>
<b>Hydraulic Ram spares</b>	<b>36</b>
<b>MJ76 Rollers</b>	<b>37</b>
<b>Roller End - Parts List</b>	<b>37</b>
<b>MJ76 Blades</b>	<b>38</b>
<b>MJ76 Shafts</b>	<b>40</b>
<b>Accessories</b>	<b>40</b>
<b>PTO shaft (605911)</b>	<b>41</b>
<b>50 SQ 5 Stud unbraked axle stub (MJ30-560T-AB12)</b>	<b>42</b>
<b>50 SQ 5 Stud braked axle stub (to suit MJ30-560T-AB14)</b>	<b>42</b>
<b>JJ.03499-1.9 (1:1.9 3 way gearbox)</b>	<b>43</b>
<b>LF205H-205 872-1.92</b>	<b>44</b>
<b>LF205TH-205.874-1.92</b>	<b>45</b>
<b>T278A (278.221.10) (1:1.9 &amp; 1:1) 4 way gearbox</b>	<b>46</b>

# Introduction

## Thank you

We appreciate having you as a customer and wish you many years of safe and satisfied use of your machine.

## Safety Aspects

This manual is an important part of your machine and should remain with the machine when you buy it. Reading your operator's manual will help you and others avoid personal injury or damage to the machine. Information given in this manual will provide the operator with the safest and most effective use of the machine. Only competent and skilled persons who have fully read and understood this operator's manual are allowed to operate this machine.

Sections in your operator's manual are placed in a specific order to help you understand all the safety messages so you can operate this machine safely. You can also use this manual to answer any specific operating or servicing questions.

Your manual contains special messages to bring attention to potential safety concerns, machine damage as well as helpful operating and servicing information. Please read all the information carefully to avoid injury and machine damage. Should any questions arise regarding the information given in this booklet, please contact your local MAJOR dealer or MAJOR.

The operator is solely responsible for the safe use and maintenance of the machine. The machine must only be operated by a competent and skilled person. Setting up and adjustment must only be carried by the operator. Do not let a third party person to adjust or modify the machine in any way.

## Intended use

This machine is a grass cutting machine and designed for cutting grass. Moreover, it must only be used with a suitable tractor (see "Product Specifications" section of this booklet) and driven by an adequate drive-line of the tractor PTO. All other use is strictly prohibited. Major will not be held responsible for any loss or damage caused due to a misuse of the machine.

## Register Your Product and Warranty Online

To register your product through the Internet, simply go to the Support section on [www.major-equipment.com](http://www.major-equipment.com). Completing the information, either online or with the product warranty card, will ensure the customer that their product receives all post sales service and important product information.

This machine is warranted for 12 months. No warranty is given where the machine is being used as a hire machine. Warranty is against faulty workmanship or parts.

Warranty covers parts only. All parts must be returned to the manufacturer. No warranty can be considered unless parts are returned. All replacement parts will be supplied on a chargeable basis until warranty has been accepted.

## Tractor Requirements



Attaching the machine to the tractor will influence the stability and manoeuvrability of the tractor. Please consult your tractor manual for limitations on weight and towing ability of the tractor.

It is the operator's responsibility to ensure that the tractor is suitable for the machine. Always consult your tractor's manual for any further information required.

Recommended Horse Power requirements for the particular models are provided in the "Product Specification" section of this booklet. Using excessive power can affect the quality of cut and/or may damage the machine.

Tractors which are not suitable for the operation can sustain damage due to the weight and power requirements of the machine. Always observe the weight of machine provided in the "Product Specification" section of this booklet, compare this with the guidelines from the tractor manual and ensure that the tractor can lift the machine safely.

The machine is designed to be attached by means of a 2/3 point linkage connection or can be trailed (specific models). The position of the machine can be adjusted by manual or hydraulic top link.

Winged models require at least one hydraulic spool with 1/2" female quick release connection for a single acting ram/rams.

Road light kit requires a 12V 7 pin socket.

## Safety

The operator's manual also explains any potential safety hazards whenever necessary in special safety messages that are identified with the word, CAUTION, and the safety-alert symbol



### Hazards associated with operating Grass Cutting Machinery

#### Shear Hazard

Shear hazards are created when the edges of two objects move toward or next to each other closely enough to cut relatively soft material. This can include the parts of the machine under hydraulic control when operating from transport to mowing position. Note, the wing units are designed to float independently of the centre deck & are free to move within operating limits.

#### Crush Hazard

Bystanders can be injured when machine is lowered into mowing position. Winged machines have crush points around the hinge areas & between the wing & main body. Always use transport locking bars when not in use (winged models only).

#### Rotating Blade Hazard

All persons are at risk if they place their hands or feet under the machine when it is raised from the ground when the blades are in motion.

#### Pinch Hazard

Pinch points are created when two objects move together, with at least one of them moving in a circle. This hazard is common in power transmission devices such as Belt Drives, Gear Drives & Rollers. Ensure all guarding is present.

#### Wrap Hazard

Any exposed, rotating machine component is a potential wrap point. Injuries usually occur when loose clothing or long hair catch on and wrap around rotating parts such as PTO shafts or Drive shafts on the machine. Ensure all guarding is present.

### Free-wheeling parts Hazard

The heavier a revolving part is, the longer it will continue to rotate after power is shut off. This characteristic is called 'free-wheeling.' Blades, and various other components, drive shafts etc., will continue to move after power is shut off - often for several minutes. Injuries occur when:

- Operators shut off equipment, and attempt to clean or adjust a machine before components have completely stopped moving.
- Shear bolt protection device in PTO shaft shears & the mowing parts are still spinning but the primary PTO shaft is stationary. Operator awareness is the key to safety around freewheeling parts. Never raise the machine while the blades are still rotating.

### Thrown objects Hazard

Machines throw material as a natural part of doing their job. Foreign objects, such as stones, sticks and other debris, may be taken into this equipment and expelled at tremendous speed. These objects are contained by the sides of the machine and by the rear/front rollers / guards / chain guards / rubber skirts depending on model of your machine. Ensure bystanders are clear from the machine & cannot be hit with debris expelled from the machine. Bystanders or animals in the path of thrown objects could be seriously injured. Never operate machine with decks raised from the ground as this makes the front/rear protection redundant.

### Hydraulic Hazard (if applicable)

Hydraulic systems store considerable energy. Careless servicing, adjustment, or replacement of parts can result in serious injury. High pressure blasts of hydraulic oil can injure eyes or other body parts. The following precautions are crucial:

- Make certain the hydraulic pump is turned off.
- Lower attached equipment to the ground.
- Confirm that load pressure is off the system.

A pinhole leak in an hydraulic hose is a serious hazard. A leak may not be visible, and the only sign may be a few drops of fluid. Never inspect hydraulic hoses with your hands, because a fine jet of hydraulic fluid can pierce the skin.

### Slips, Trips and Falls Hazard

Slips and falls often result from:

1. Slippery footing on the ground
2. Cluttered steps and work platforms.

The potential for slips and falls can be greatly reduced by using good judgement and practicing good housekeeping on and around equipment.

### Noise Hazard

Please note that the machine is normally used outdoors and that the position of the operator is seated in the driving seat of the tractor. It is advisable to consult the prescriptions listed in tractor operator and maintenance manuals.

The acoustic pressure at a distance of 2.6m from the centre of the machine and at a height of 2.0m, with the implement operating in a no load condition can reach 90 dBA. In a loaded condition & a PTO rate of 540 (1000) RPM the value can reach 97dBA. Higher rate of PTO input will result in higher noise levels. Always wear hearing protection.

### Operating Safely

This MAJOR machine is designed to operate at a PTO rate which is stated in the Product Specifications part of this booklet. Ensure tractor PTO output is set at a correct RPM rate. This MAJOR machine must only be used for purposes outlined in the Intended Use section of this booklet. All other use is strictly prohibited.



Users should become thoroughly familiar with the contents of this manual before using, servicing and mounting the implement to the tractor and all other pertinent operations. Never wear jewellery, loose clothing such as ties, scarves, belts, unbuttoned jackets or dungarees with open zips which could become caught up in moving parts.



Always wear approved garments complying with accident prevention provisions such as non-slip shoes, ear muffs, goggles and gauntlets. Wear a jacket with reflecting stickers if the implement is used near public highways.



Consult your retailer, the Labour Health Service or your nearest equivalent authority for the information about the current safety provisions and specific regulations with in order to ensure personal safety.



**ALWAYS DISENGAGE PTO, SWITCH OFF THE TRACTOR ENGINE AND ENGAGE THE PARKING BRAKE BEFORE MAKING ADJUSTMENT TO THE MACHINE.**



NEVER PLACE LIMBS UNDER THE MACHINE WHILE ROTOR(S) ARE TURNING. ROTOR(S) CAN REMAIN TURNING FOR UP TO 1 MINUTE AFTER DISENGAGING PTO.

## Workstation

The operator must remain seated while working the machine. If the machine is a winged unit and the wings need to be raised/lowered the operator must not leave the tractor. Always ensure the PTO has been turned off and the parking brake applied before leaving the tractor cab or carrying out maintenance.



NEVER OPERATE THE HYDRAULICS WITH THE TRACTOR SWITCHED OFF

## Regulations for use of the transmission

The transmission to the gearboxes is protected throughout the machine by both PTO shafts and bolt down covers. All guarding should be kept efficient and in good condition. If the condition is poor, the guarding should be renewed before the implement is used.



UNLESS IT IS CORRECTLY PROTECTED THE TRANSMISSION COULD CAUSE DEATH SINCE IT CAN CATCH ON PARTS OF THE BODY OR CLOTHING

Ensure retaining chains are correctly anchored on all PTO shafts, preventing them from turning. Ensure drive line can turn easily within the shield. Keep spline grooves clean and greased so that PTO shaft can connect easily. Besides being described in this booklet, the method by which the PTO shaft is connected to the tractor must be checked out with the instructions in the tractor manufacturer's manual.

## PTO Shaft Safety

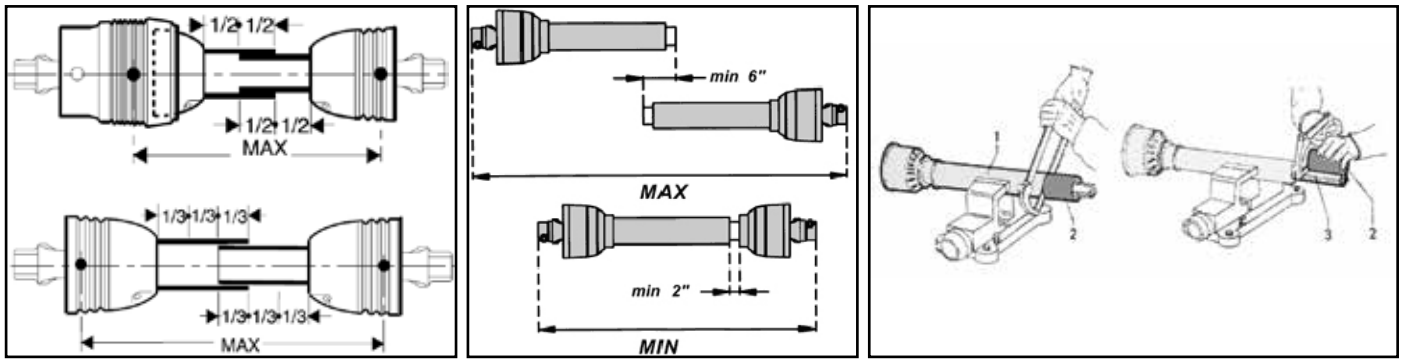
Maximum PTO input is specified in the Product Specifications section of this booklet. Contact your nearest dealer or a specialised retail outlet if the PTO must be replaced with a longer one, since this must belong to the same power category and possess the same characteristics. An unsuitable PTO could easily break.

The tractor PTO shaft length may be altered to suit the individual tractor model. When the machine is in operation, the PTO shaft should have a minimum 1/3 engagement as shown in the diagrams. After the machine has been hitched to the tractor, it should be checked in various positions that the drive line is the correct length. If the PTO is too short and tends to slip out of place, it must be replaced with a longer one.

If the PTO shaft is too long, it should be shortened in the following way:

- Set the machine at a minimum distance from the tractor, then brake the tractor and switch off the engine.
- Separate the two halves of the PTO. Insert the female part into the tractor PTO and the male part into the machine PTO, checking that the position is correct by means of the fixing pins.
- Line up the two halves of the PTO together, keeping them parallel.
- Using a felt tip pen, match mark the place where the two halves must be shortened as shown.
- First cut shield "1" and use part "2" as a reference to cut the splined shaft.
- Proceed in the same way for the second half.
- Trim and chamfer the two cut ends of the PTO and clean off all swarf and shavings.
- Grease the two profiles and join the two halves of the PTO together.
- Mount the PTO shaft and check that its length is correct as before.





## Driving Safely on Public Roads

Check the local Highway Code regulations before driving the tractor on public highways with an implement attached. Check the reflectors, hazard flashers and/or projecting load indicators are installed when required and efficient. These indicators must be installed correctly and easily seen by the drivers of other vehicles.

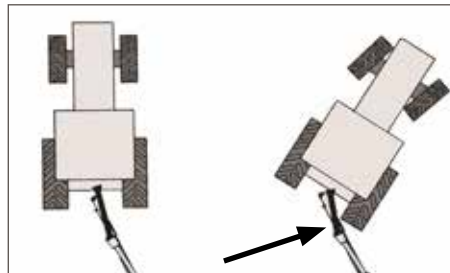
Bystanders must not be allowed to lean against or climb onto the machine during transport or while working. Do not allow bystanders to ride on the machine.



Maximum transport speed of the implement is limited to 25-30km/h depending on the model of the machine (observe safety labels on the machine).

### Trailed Machines only (if applicable)

The shaft must not reach the end of the tube or project from this. Ensure the PTO does not bottom when turning



## General safety instructions

Precautions to be taken while working with the machine:

1. Do not operate the machine when you are tired or under the influence of alcohol or any other intoxicant;
2. Before starting mowing, make sure that the area is clear of people or animals.
3. Before starting adjusting the machine, it is mandatory to disconnect the PTO, to turn off the engine of the tractor, apply handbrake and wait for the turning parts to become still and placed on the ground.
4. It is mandatory to read all the safety requirements and the operator's manual of the machine.
5. If you are not sure how to use the machine, please contact the manufacturer or the dealer.

## Inspections before Use



Always disengage PTO, Switch off tractor engine and engage the parking brake before making adjustments to the machine.

1. With the whole machine as level as possible, check the oil level in all gearboxes. Top up if required through the oil filler plug. The correct level is at the oil level plug.
2. Grease all lubrication points as outlined in the Maintenance section of this booklet.
3. Check parts for wear.
4. Check the blade mounting bolts are tight.
5. Ensure the gearbox shaft nuts are tight and retained in place by split pin.
6. Check tightness of all nuts, bolts and pins.
7. Ensure safety guards and flaps are in place at all times where fitted. If these become worn or missing, replace them immediately with new ones.
8. Due to the corrosive nature of grass when cut, wash down the machine when finished mowing, especially when the machine is being stored for a long period of time.

## Starting Regulations



Always check that any imminently dangerous conditions have been eliminated before using the machine. Ensure all guarding is present & the operator is fully aware of the operations of the machine.



Always ensure the pins lock the PTO shaft yoke ends onto the spline shafts on both the tractor and the implement. An unlocked shaft could slip out of position, causing notable mechanical damage and serious injury to both operator and bystanders.

# Product Identification

## Machine Serial Numbers

If you need to contact MAJOR or your MAJOR dealer for information on servicing or spare parts, always provide the product model and serial numbers. Model and Serial number can be found on the Serial Plate located on the machine.

We suggest that you record your machine details below:

Model No: \_\_\_\_\_

Serial No: \_\_\_\_\_

Date of Purchase: \_\_\_\_\_

Dealer Name: \_\_\_\_\_

Dealer Telephone: \_\_\_\_\_

MAJOR EQUIPMENT INTL. LTD. BALLYHAUNIS, CO. MAYO, IRELAND TEL: +353 (0) 9496 30572 EMAIL: info@major-equipment.com	
MAJOR EQUIPMENT LTD (UK) MAJOR IND. ESTATE, HEYSHAM, LANCS, LA3 3JJ, UK TEL: +44 (0) 1524 850501 EMAIL: ukinfo@major-equipment.com	Serial Number/Seriennummer <input type="text"/>
MAJOR EQUIPMENT INTL LTD POSTBUS 29, NL-7700 AA DEDEMSVAART, NEDERLAND TEL: + 31 (0) 6389 19585 EMAIL: euinfo@major-equipment.com	Model/Modell <input type="text"/>
	Year of manufacture/Baujahr <input type="text"/>

## Product Specifications

The machine is propelled by using a 6 spline 1-3/8" PTO shaft (provided with the machine).

<b>Model</b>	<b>MJ76-360</b>
<b>Overall Width</b>	3715mm (12' 2 1/4")
<b>Working Width</b>	3620mm (11' 10 1/2")
<b>Transport Width</b>	2310mm (7' 6 3/4")
<b>Transport Height</b>	1925mm (6' 3 3/4")
<b>Power (HP)</b>	45-75
<b>PTO rpm</b>	540
<b>Cutting Height</b>	10-100mm (3/8" - 3 15/16")
<b>Rotors</b>	6
<b>Blades</b>	24
<b>Weight</b>	1560kg (3440lbs)
<b>Blade tip speed</b>	76 m/s
<b>Mowing Rates (Acres/hr at 7mph)</b>	10

## EEC certificate of conformity for machines

(conforming to Directive 2006/42/EC)

Name of Manufacturer: Major Equipment Ltd  
Address: Coolnaha, Ballyhaunis, Co. Mayo, Rep of Ireland

Tel. +353949630572  
Fax +353949630788

*declares in sole responsibility that the product:*

**Machine description and function:** Rotary mower with vertical axes cutting heads which cuts grass so it can be subsequently picked up.

**Model:** Contoura (MJ76)

**Type:** \_\_\_\_\_

**Serial number:** \_\_\_\_\_

Technical file compiled by: Alex Kolchanov (c/o Major Equipment Ltd)

- **THE SUPPLY OF MACHINERY (SAFETY) REGULATIONS 2008.**
- **S.I. No. 299 of 2007**, Safety, Health and Welfare at Work (General Application) Regulations 2007 (Ireland).
- **Health & Safety at Work, etc. Act 1974 (c.37) (UK).**
- **EN ISO 14121-1: 2007** 'Safety of machinery. Principles for risk assessment'.
- **EN 745** - Agricultural Machinery - Rotary Mowers and Flail Mowers - Safety.
- **EN ISO 13857** - Safety of machinery: Safety distances to prevent hazard zones being reached by upper and lower limbs.

I hereby certify on behalf of Major Equipment Int. Ltd., that this machine when properly installed and operated correctly, complies with all the essential Health & Safety requirements of all legislation referred to above.

Signed: \_\_\_\_\_



Place: Coolnaha, Ballyhaunis, Co. Mayo, Rep of Ireland

Date: 20/04/2021

Name: John Murphy

Position: Managing Director


# Machine Safety Labels

The machine safety labels shown in this section are placed in important areas on your machine to draw attention to potential safety hazards.

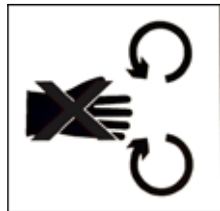

On your machine safety labels, the words DANGER, WARNING, and CAUTION are used with this safety alert symbol. DANGER identifies the most serious hazards.

**To prevent Serious Injury or Death**

- Avoid unsafe operation or maintenance.
- Do not operate or work on this machine without reading and understanding the operator's manual.
- If manual is lost, contact your nearest dealer for a new manual.



To avoid injury, read the manual

Rotating blade hazard



PTO entanglement hazard - keep clear of PTO drives.

**ATTENTION!!**

**CHECK TIGHTNESS OF TRANSMISSION BOLTS AT EVERY SERVICE.**

Check tightness of the transmission bolts

**ATTENTION!**

**Do not engage drive while in transport position**

Do not engage drive while in transport position



Grease points

**MAX PTO INPUT 540 RPM**

- ⊙ MAX. DREHZAHL 540 U/MIN
- ⊙ MAX. TOERENTAL 540 TPM
- ⊙ MAX. PRISE DE FORCE 540 TOURS/MIN

Maximum PTO input

**ATTENTION**



**KEEP CLEAR WHEN RAISING & LOWERING ARMS**

Moving parts

**WARNING**



**DO NOT GO NEAR LEAKS**

- High pressure oil easily punctures skin causing serious injury, gangrene or death.
- If struck, seek emergency medical help. Immediate surgery is required to remove oil.
- Do not use finger or skin to check for leaks.
- Lower load or relieve hydraulic pressure before inspecting fittings.

High oil pressure hazard

**CHECK WHEEL NUTS DAILY**

CONTROLLER LES ECROUX DE ROUES CHAQUE JOUR  
RADMÜTTERN TÄGLICH ÜBERPRÜFEN

---

**TYRE PRESSURE 2 BAR / 30 PSI**

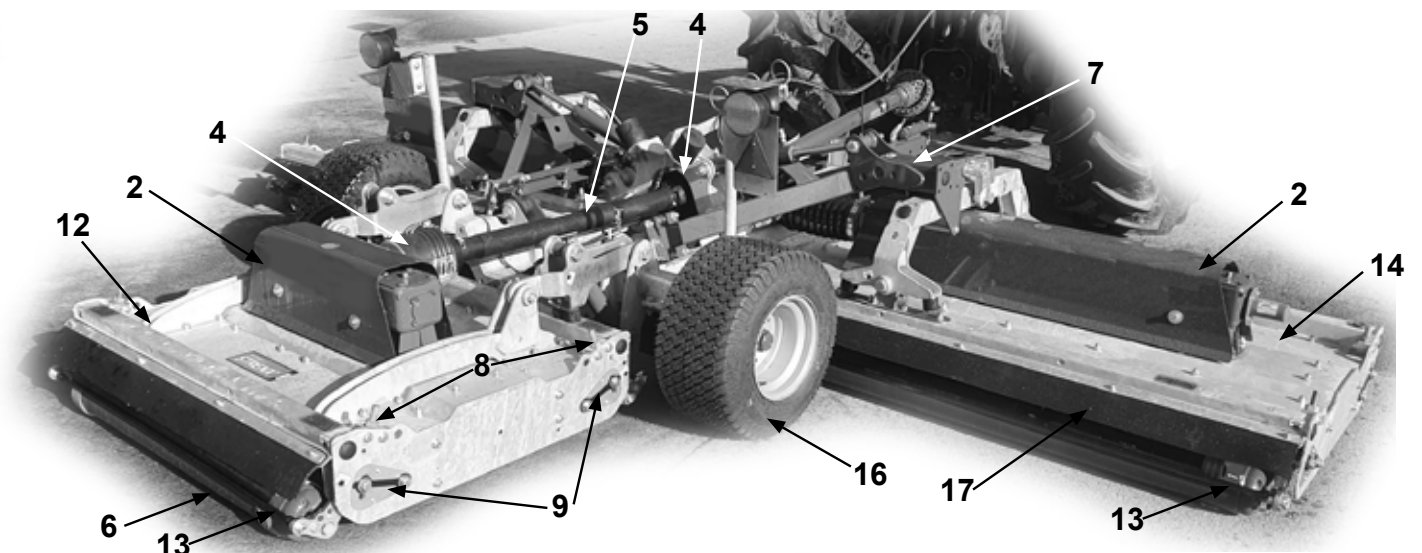
BARRE DE LA PRESSION 2 DE PNEU (30 PSI)  
REINFENDRUCK 2 BAR (30 PSI)

Check wheel nuts daily

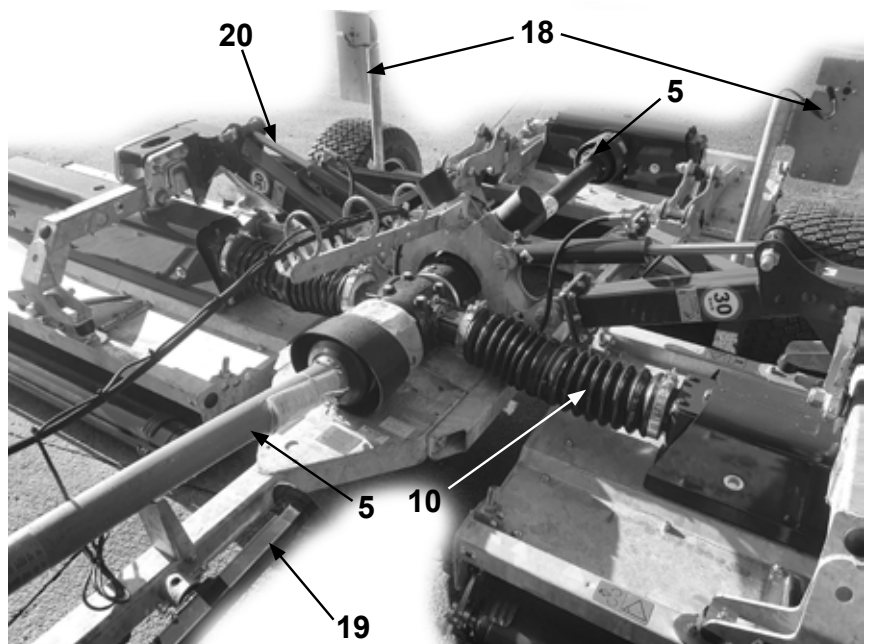
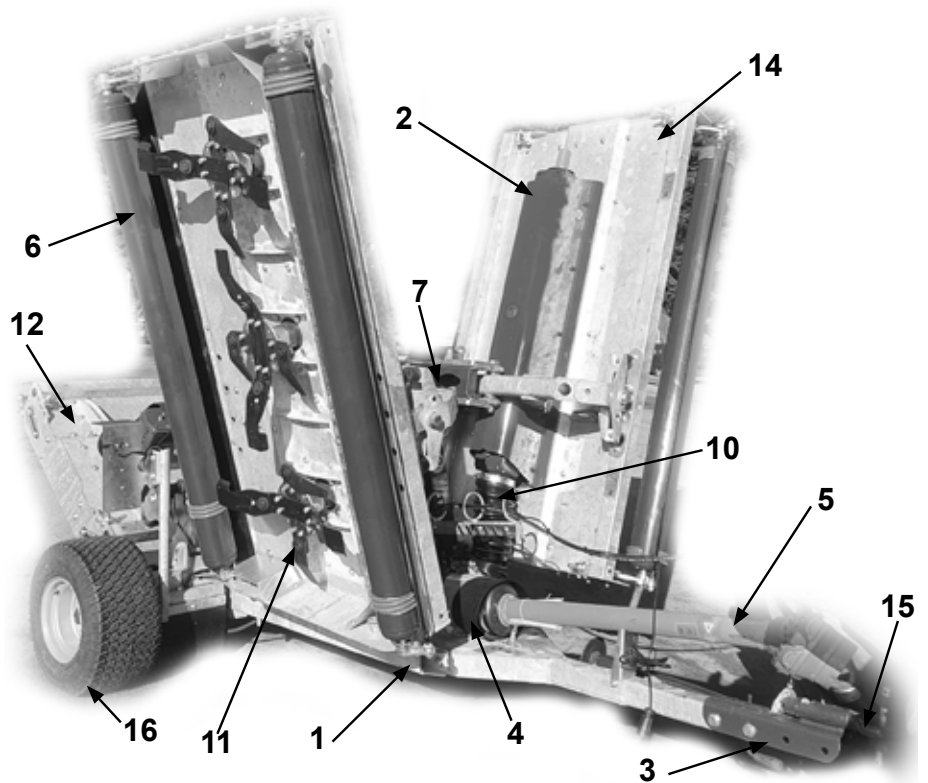


Max speed

## Key to Main Parts

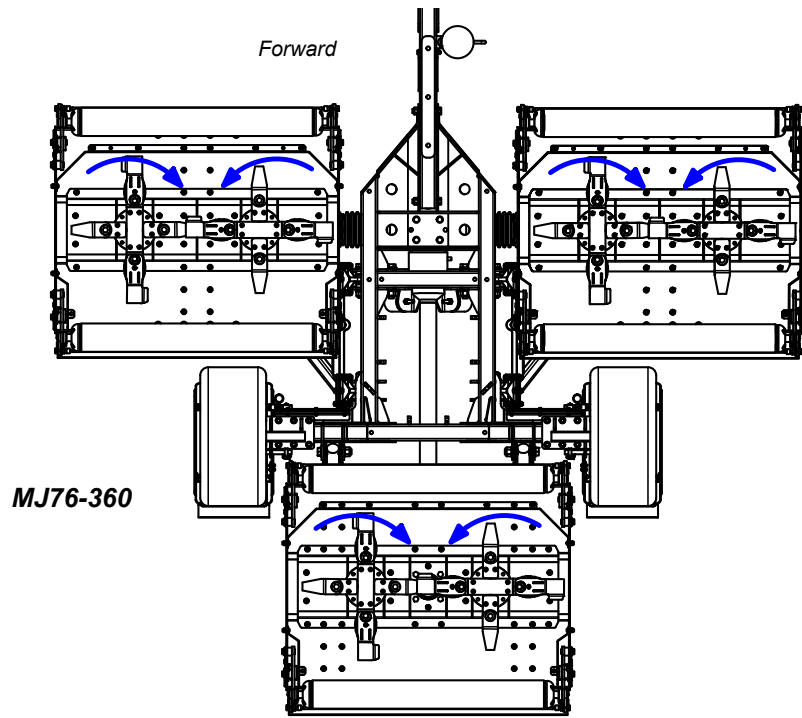


1	Body
2	Drivetrain cover
3	Drawbar
4	Gearbox PTO cover
5	PTO shaft
6	Roller
7	Wing arm
8	Roller height adjuster rod
9	Roller height indicator
10	Wing PTO shaft
11	Blades
12	Rear deck
13	Scraper bar
14	Wing
15	Hitch
16	Wheel
17	Rubber deflector
18	Lighting kit
19	Parking jack
20	Hydraulic ram



# Blade Rotation

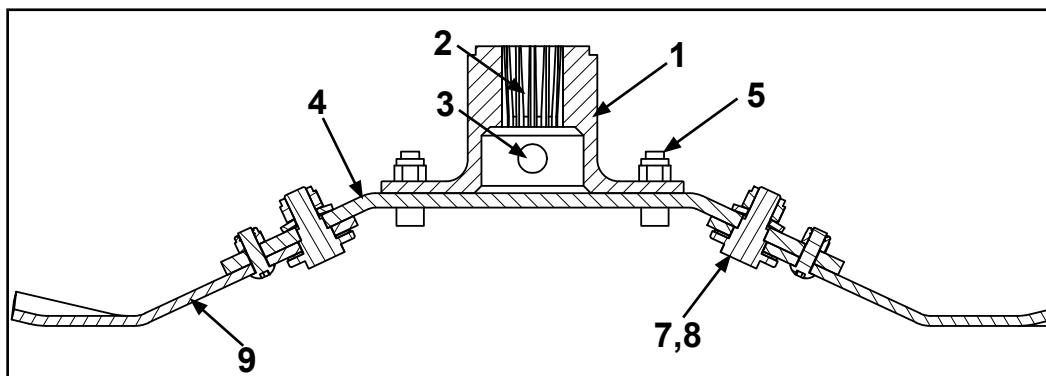
*Blade rotation viewed from underside*



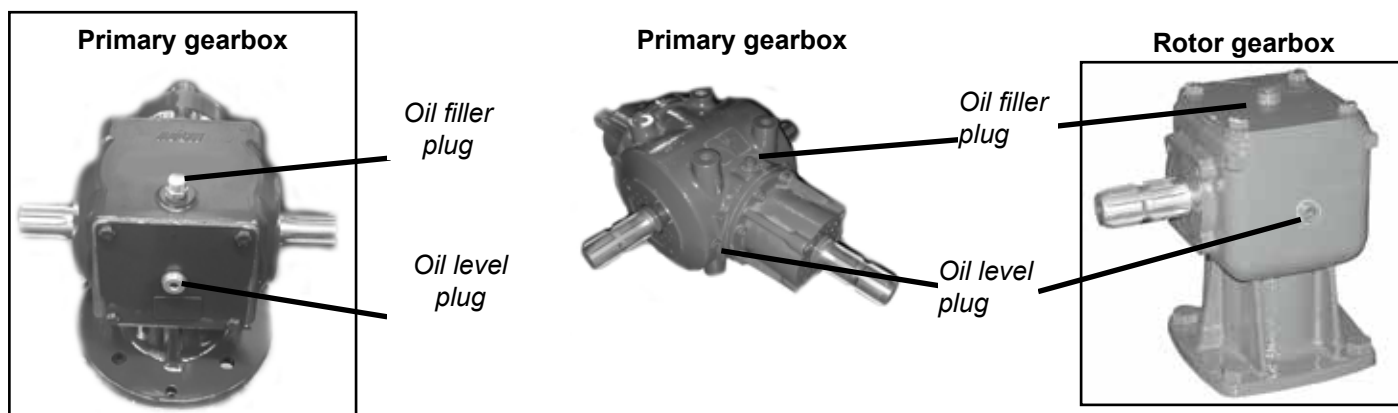
## Blade system

Full breakdown of the blade assembly is provided in the Spare Parts section of this booklet

1 Blade mount	7 Blade pivot bolt
2 Gearbox output shaft	8 Blade pivot bush
3 Gearbox split pin	9 Blade
4 Blade back	
5 Blade back bolt	
6 Blade back spacer	



## Drive-line gearboxes





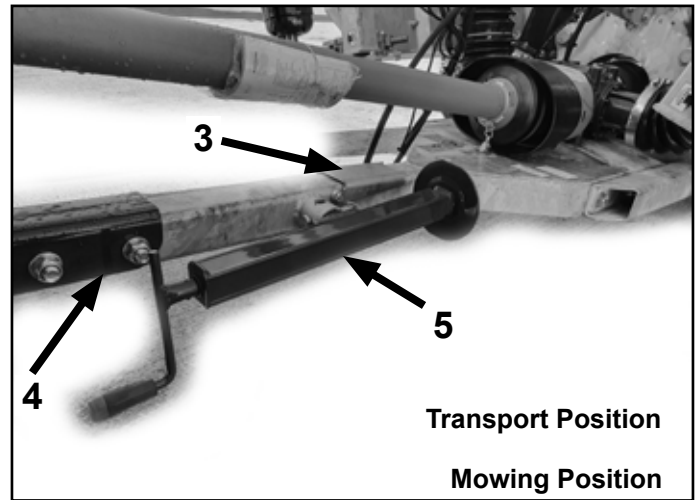
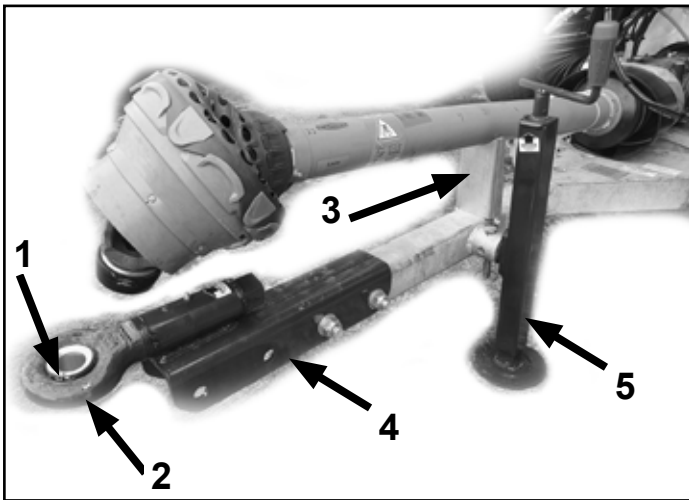
# Operating the Machine

## Attaching machine to the Tractor



Always operate on level ground when attaching/detaching the machine. This will prevent dangerous movement. Never allow anyone to stand between the tractor and the machine.

1. Reverse the tractor, connect the hitch & secure in position with correct size drawbar pin
2. Ensure that the circlip is on top (see diagram below).
3. Ensure the tractor brake is applied
4. Adjust the level of the drawbar until the main body is level (see diagram below).
5. Connect the hydraulic connections to the tractor.
6. Fit the PTO shaft & secure the PTO cover chains.
7. Adjust drawbar or/and cut PTO shaft.
8. Lift the parking stand and lower the PTO stand (see diagram below).



- |   |                            |
|---|----------------------------|
| 1 | Circlip                    |
| 2 | Hitch                      |
| 3 | PTO stand                  |
| 4 | Drawbar lateral adjustment |
| 5 | Parking jack               |

## Transport Position



Before raising the machine wait until the transmission and the blades are completely still.  
During the transport of the machine it is recommended that the PTO shaft is disconnected.

1. Check machine is hitched to the tractor as described. Ensure the tractor parking brake is applied
2. Ensure moving parts become still then transform the machine into transport position by hydraulic control
3. Lift up the wings by operating hydraulics and lock in place.
4. Lift the rear deck up by operating hydraulics.



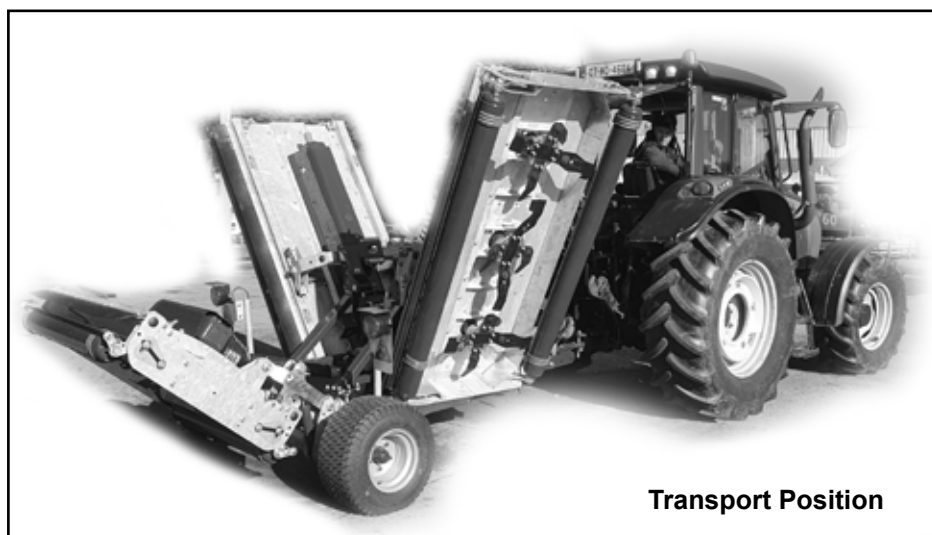
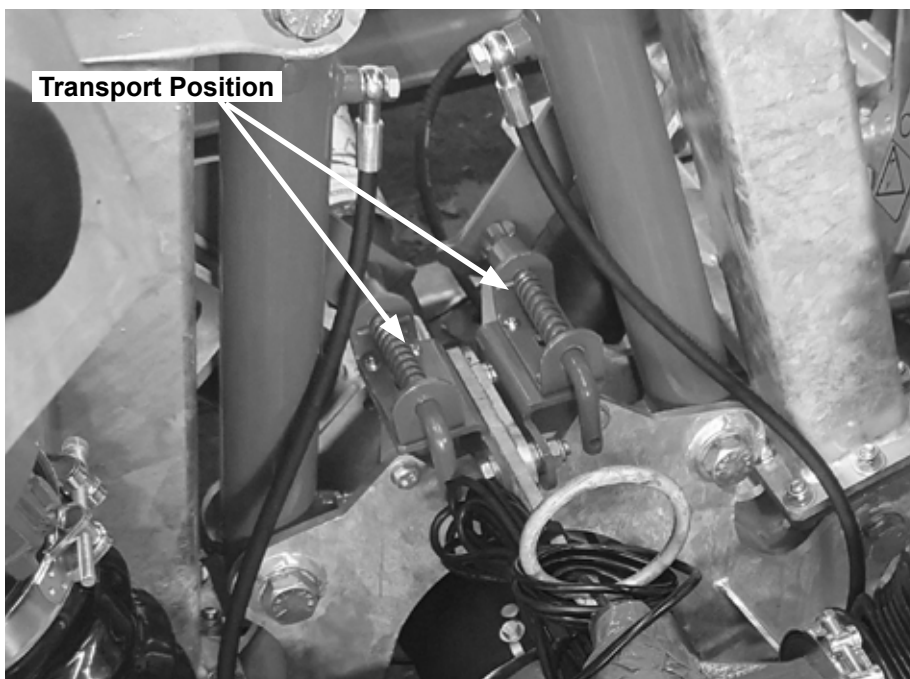
Do not lift the wings/rear deck while PTO is still in motion. This may damage the PTO shaft and other components.



Transport Speed of Trailed models should not exceed 30 km/h.

## Transport Lock

**IMPORTANT:** Wings must be locked while transporting the machine.



## Operating the Machine/Mowing



Never place limbs under the machine while rotors are turning. Rotors can remain turning for up to 1 minute after disengaging PTO.



While operating this machine the PTO input rate should not exceed the RPM stated in the Product Specifications section of this booklet. Always operate on level ground when connecting/disconnecting the implement. This will prevent dangerous movement.



Never allow anyone to stand between the tractor and the machine. Ensure the machine is attached correctly to the tractor as previously described. Always start up the tractor PTO at a low RPM. Build up to operating speed, select a suitable forward gear & proceed to cut grass.

1. Hitch the machine as outlined in the previous section. Ensure bystanders are clear from the machine & cannot be hit with debris expelled from the machine.
2. Lift up the Parking Jack or the Parking stand (depending on the model) and secure it in mowing position.
3. Ensure the PTO stand is flipped down.
4. Check PTO shaft is fully engaged on tractor PTO splines.
5. Lower the machine by hydraulic control to the ground or use tractor linkage controls.
6. After clearing the vicinity of bystanders, relocate the Transport Bar.
7. Start up the tractor PTO at a low RPM.
8. Build up to operating speed, select a suitable forward gear & proceed to cut grass.



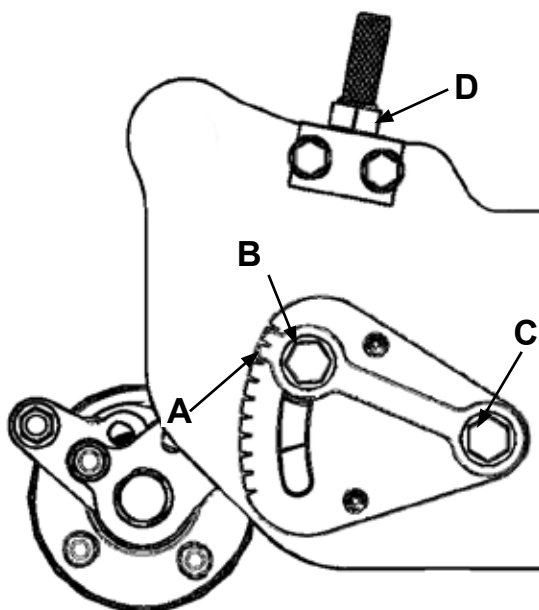
## Roller and Castor wheels adjustment

In order to achieve desired cutting height, castor wheels and roller should be adjusted.

### Roller

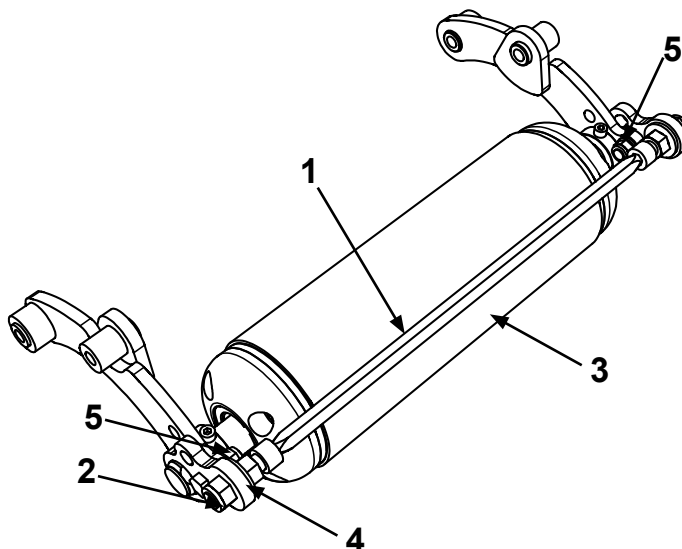
To adjust the height of the roller follow this procedure at both sides of the roller:

1. Loosen Bolts **B** and **C** (Note: You do not have to remove these bolts, half of the turn will suffice to allow movement);
2. Turn Nut **D** clockwise to increase the cut height or anti-clockwise to decrease the cut height;
3. Match the height of the roller on both sides of the machine by checking the position of Arrow **A**;
4. When adjustment is complete, re-tighten Bolts **B** and **C**.



### Scraper bar

In order for a scraper bar to function properly, it should be kept tensioned. To tension the scraper bar (1) tighten up nuts (2) at both ends of the roller (3). Locate the scraper bar bracket (4) in a desired position by loosening/tightening bracket nut (5).



# Maintenance

In order to keep your Major machine in a good working order it is necessary to conduct maintenance on a regular basis. Only competent and skilled persons who have fully read and understood this operator's manual are allowed to carry out maintenance on this machine. It is important to replace worn parts immediately with genuine Major spare parts. These parts are manufactured to the same specification as the machine and will provide the best result. Genuine Major spares can be obtained from MAJOR or your local MAJOR dealer.

All maintenance checks and operations must be carried on a firm level ground. The machine must always be disconnected from the tractor before any cleaning, lubricating and servicing operations can be carried out. If works must be carried out under the machine, ensure that the props, jacks, stands, hoists or cranes are capable of supporting the machine securely.

If emergency operations are required whilst the machine is connected to the tractor, switch off the engine of the tractor, remove the key from the ignition, engage the parking brake and disengage the PTO. An example of such emergency situation is the complete blockage of the machine in the field. To clear out the blockage follow the safety steps described above and clear out the blockage. Ensure there are no ropes, twines or wires wrapped around the rotors.

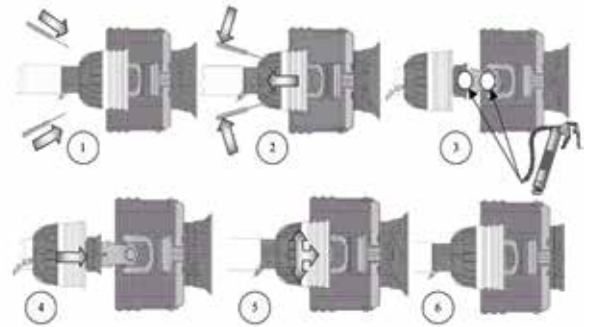
## Machine storage

To prolong the life of your machine it is recommended to store it in a dry environment. Prior to parking the machine for storage, wash the machine thoroughly, especially underneath, and ensure that there is no grass or debris left on the machine. Lubricate all pivot points with EP2 type grease. Check for oil leaks and fix these if required. Any parts of the machine with damaged paint/galvanised surface must be painted.

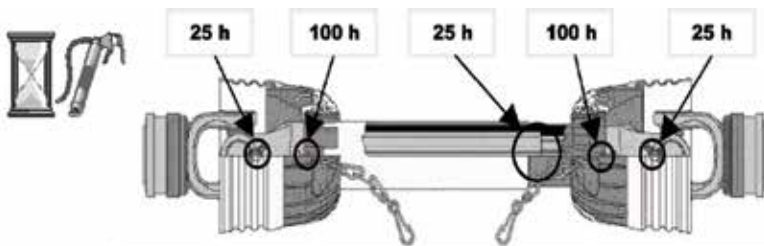
## PTO Shaft Maintenance

### Guard Removal and Yoke End Greasing

1. Prise back locking tabs
2. Pull back PTO Guard
3. Grease points as shown
4. Push Guard into position
5. Click into place
6. Tie check chain



### PTO Greasing Intervals

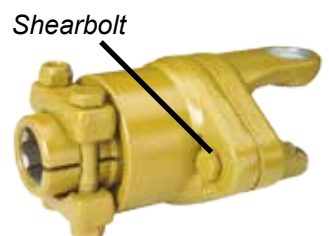


### Shearbolt Replacement (if applicable)

1. Slide yoke shield back.
2. Drive out sheared bolt with hammer and punch.
3. Align holes and install new shear bolt. (Use only genuine replacement shear bolts)
4. Slide yoke shield securely in place



Always fit PTO shaft with the shearbolt/slip-clutch end connected to the machine as directed on the PTO guarding.



## Transmission Bolts

All nuts and bolts in the transmission including Rubber couplings, Star Drives, PTO Shafts and Gearboxes should be checked for tightness after mowing at the following intervals:

1st 50 Acres

1st 100 Acres

1st 250 Acres

And every 250 acres thereafter.

## Roller (if applicable)

Check the condition of the roller end (stub axle) at the end of every season. Roller shaft (stub) must be able to rotate freely and without excessive play. If necessary, remove the roller assembly and adjust the tightness of the bearings.

## Replacement of wear parts

Blades, blade backs, blade bushing, blade bolts and nuts must be checked on a regular basis for wear and deflection. MAJOR recommends to visually check the blade assemblies every 40 hours of operation. This interval may change depending on the operational conditions.

Replace any damaged or worn parts immediately, failure to do so can result in blade breakages and can cause damage to the equipment or injuries to the operator and others nearby.

Blunt blades must be sharpened or replaced, failure to do so will result in a poor quality cut and excessive use of power from your tractor.



If the machine is equipped with wheels, wheel nuts must be checked daily. Air pressure within pneumatic tyres must be maintained at 2 Bar. Solid wheels must be checked for wear and damage and if necessary replaced immediately.



ENSURE BLADE ROTATION AND TIMING IS CORRECT AFTER SERVICING TRANSMISSION.



Pay attention when servicing or detaching components from the machine. Subassemblies and parts e.g. blade assemblies, gearboxes, rollers, guards, skids, wheels etc. can weigh up to 100 kilograms individually and must be supported adequately before fully detaching from the machine.

## Clearing out a blockage



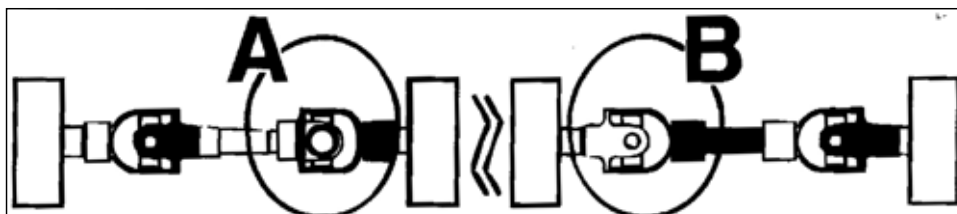
Always wear appropriate PPE when clearing out blockages.

If blockage of blades occurs proceed as follows:

1. Set the machine into transport position (including the top links);
2. Park the tractor on level ground, switch off the engine and remove the key from the ignition;
3. Apply a handbrake and disconnect the PTO shaft;
4. Using a pressure washer clear out the excess material built up around the blades. If the pressure washer is not available use your hand to remove the grass from around the blades, bearing in mind that there might be wires wrapped up around the rotors.

## Wing shafts alignment (if applicable)

Ensure that after servicing the transmission, the wing pto shaft yokes are correctly aligned as shown in the diagram below – winged models only. If the shaft journals are fitted incorrectly the damage will only occur when the wings are raised into transport position.



## Troubleshooting

Fault	Cause	Remedy	
Machine is getting blocked	Material too high or too much material	Reduce the ground speed but maintain required rpm from the PTO input	
	Grass is too wet	Stop and wait until grass is dried	
	Worn or dull blades	Sharpen or replace blades	
Leaves a streak of uncut or partially cut grass	Blades dull or bent	Sharpen or replace blades	
	Carrier RPM too low	Use correct PTO speed	
	Field conditions are so wet that the tractor tyre is pushing grass into mud	Too wet to mow. Stop operation and wait until grass is drier	
	Ground speed too fast	Reduce ground speed by shifting to a lower gear	
	Possible build-up materials under mower	Clean mower	
	Blades mounted incorrectly (cutting edge against direction rotation)	Change blades so that cutting edge is facing correct rotation.	
Material discharges from mower unevenly; bunches of material along with swath	Material too high and/or too much material	Reduce ground speed but maintain the recommended RPM at tractor PTO or make two passes over material. Raise mower for the first pass and lower to desired height for the second and cut a 90 degree angle to first pass	
Gearbox overheating	Low on lubricant	Fill to proper level	
	Improper type lubricant	Replace with proper lubricant	
	Excessive grass / debris build-up around gearbox	Remove grass, etc from machine	
Blade/bullets is scalping ground	Mower too low	Raise mower-reset wheels	
	Field is ridged	Cut field at a different angle	
	Field is too wet	Stop and wait until it is dried	
Mower will not cut.	Shear bolt sheared	Install new shear bolt	
Blades/bullets wear too fast	Cutting in sandy conditions	Increase cutting height	
	Cutting in rocky conditions	Increase cutting height	
	Blades hitting ground	Increase cutting height	
Mower seems to require excessive power	Advancing into grass too rapidly	Reduce forward travel speed	
	Hitting ground	Raise mower and reset wheels	
	Worn or dull blades	Sharpen or replace blades	
	Tractor not large enough	Use larger horsepower tractor	
Excessive vibration	Check gearbox bolts	Tighten if loose	
	Check for loose nuts on blades	Tighten if loose	
	Blade broken	Replace blades, in set	
	New blade or bolts matched with worn blade or bolts	Replace blades or bolts in sets	
	Drivelines not phased correctly. Implement and tractor yokes must be in line	Phase the driveline. Replace if necessary	
Noisy machine	Worn bearing	Replace bearings	
	Low oil in gearbox	Check level and add oil	
	Loose Parts	Check all bolts are fully tightened	
	Wrong PTO rpm rate	Check PTO rate & adjust as necessary	
	Rotors bent / broken	Replace bent or missing blades	
	Bent PTO shaft		Check PTO shafts are aligned correctly
			Check output shaft on gearboxes are not bent
		Check driveline between gearboxes is aligned.	

Gearbox leaking	Damaged oil seal	Replace seal
	Bent shaft	Replace oil seal and shaft
	Shaft rough in oil seal area	Replace or repair shaft
	Oil seal installed incorrectly	Replace seal
	Oil seal not sealing in the housing	Replace seal or use a sealant on outside diameter of seal
	Oil level too high	Drain oil to proper level
	Hole in gearbox	Replace the gearbox
	Gasket damaged	Replace gasket
	Bolts loose	Tighten bolts



## Lubrication schedule

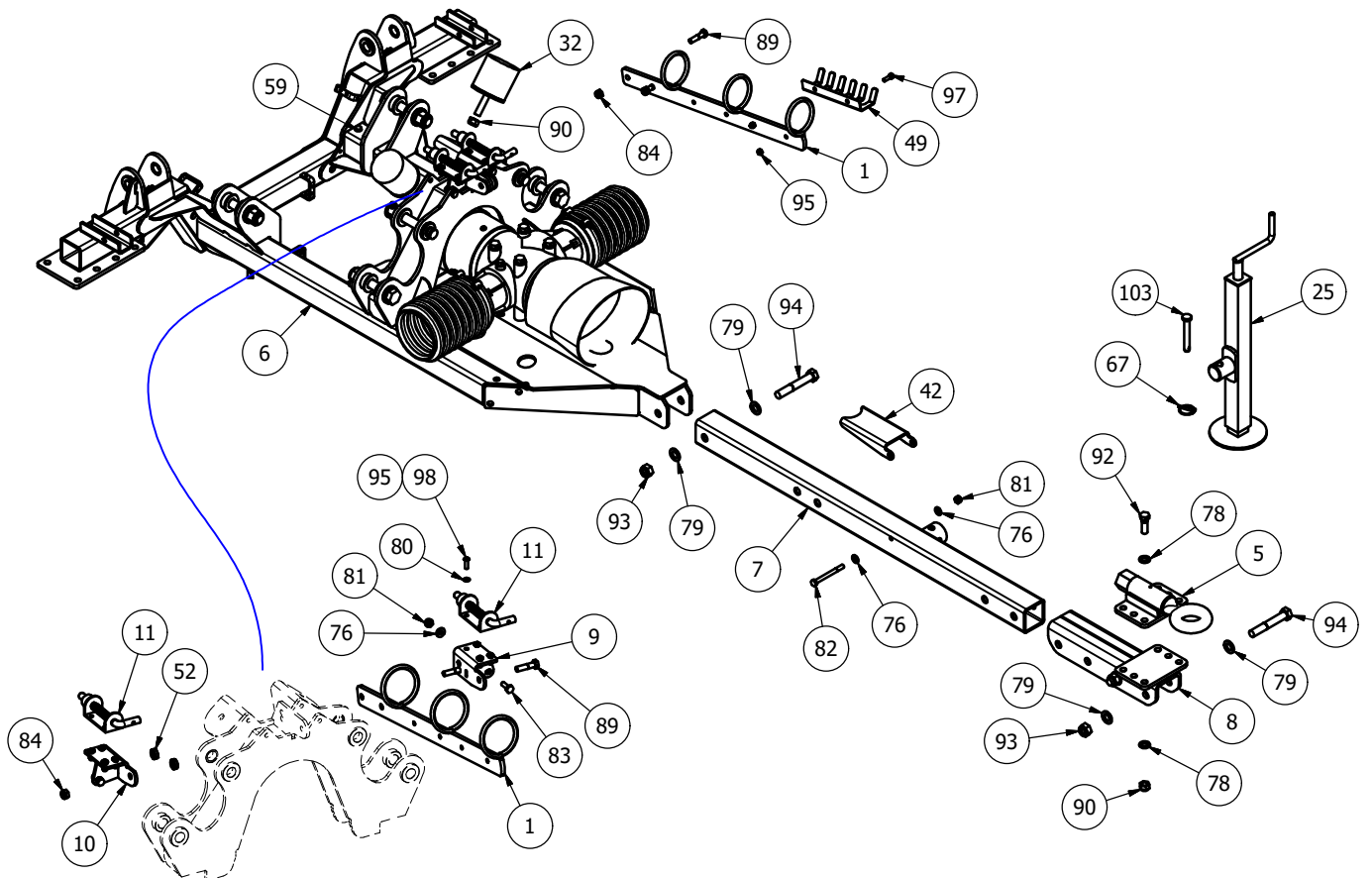
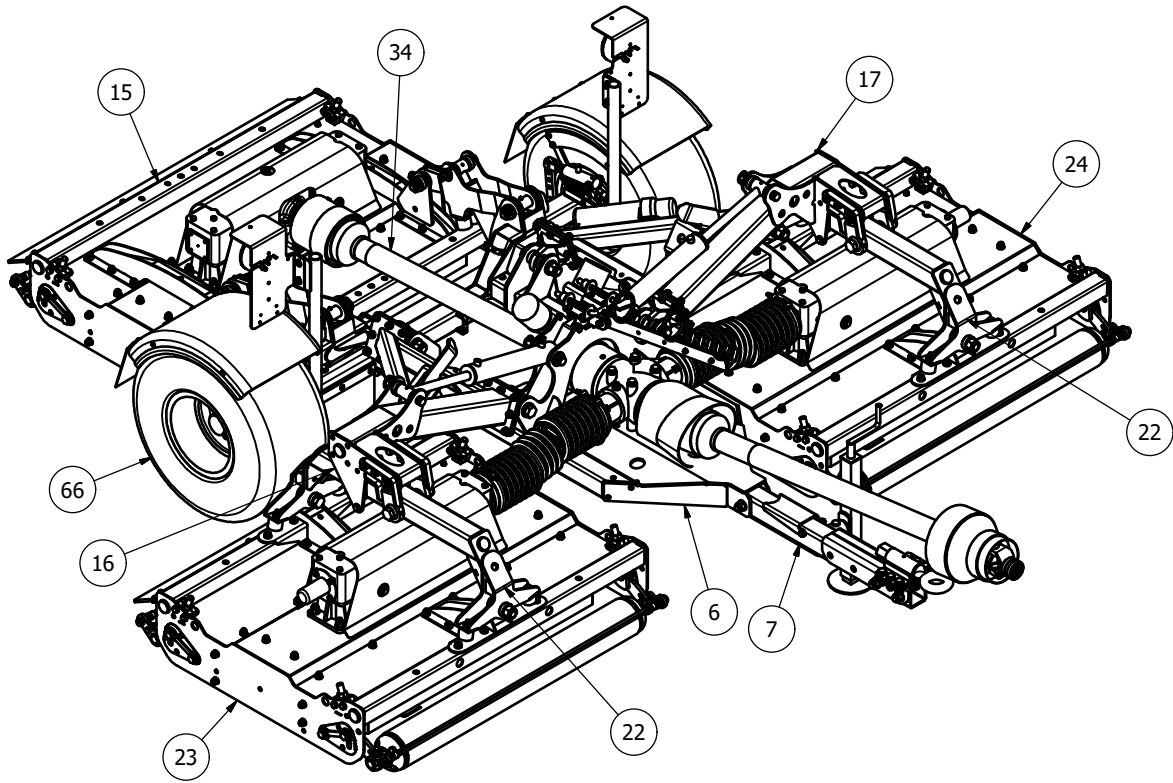
Use EP2 type grease or equivalent.

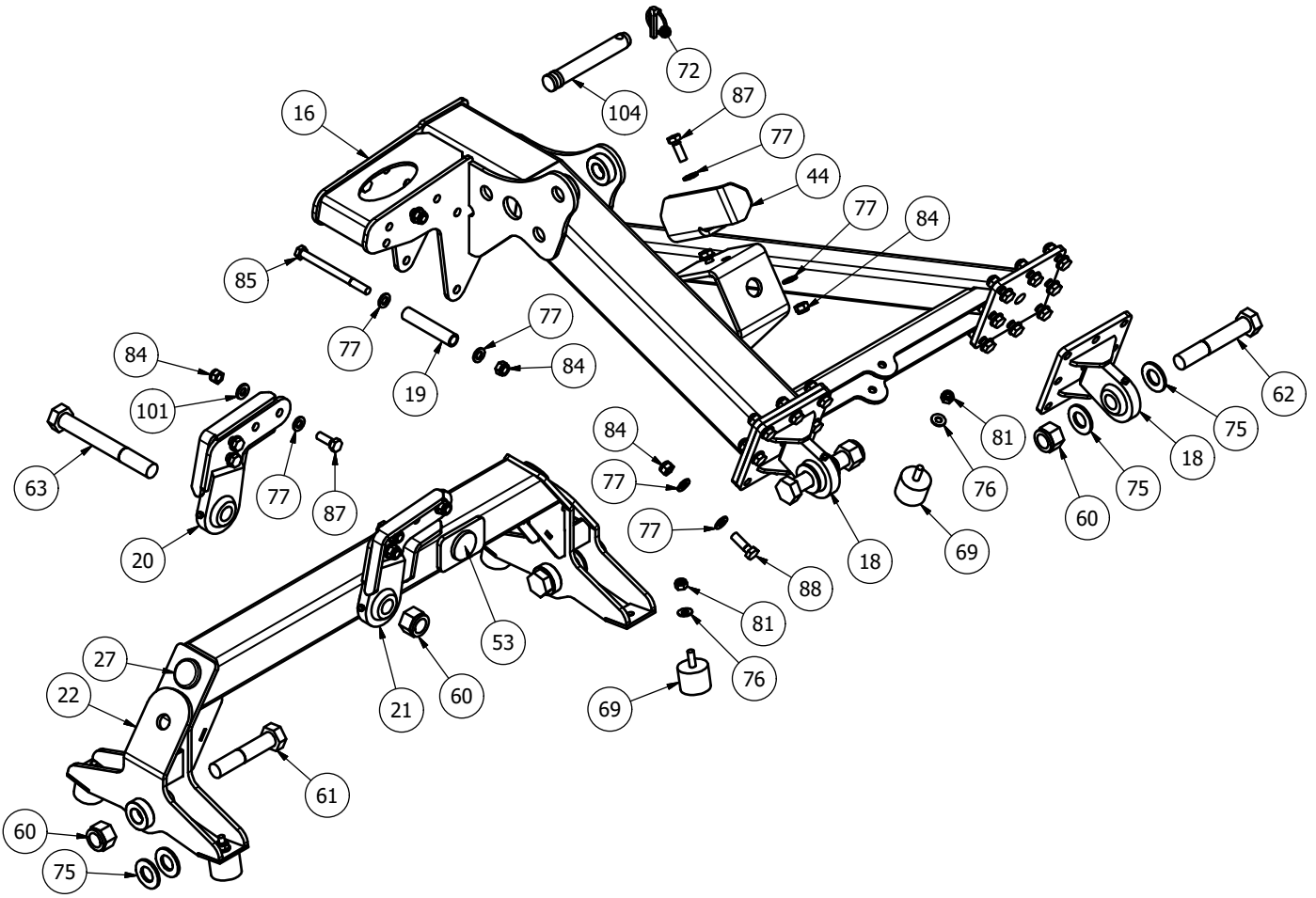
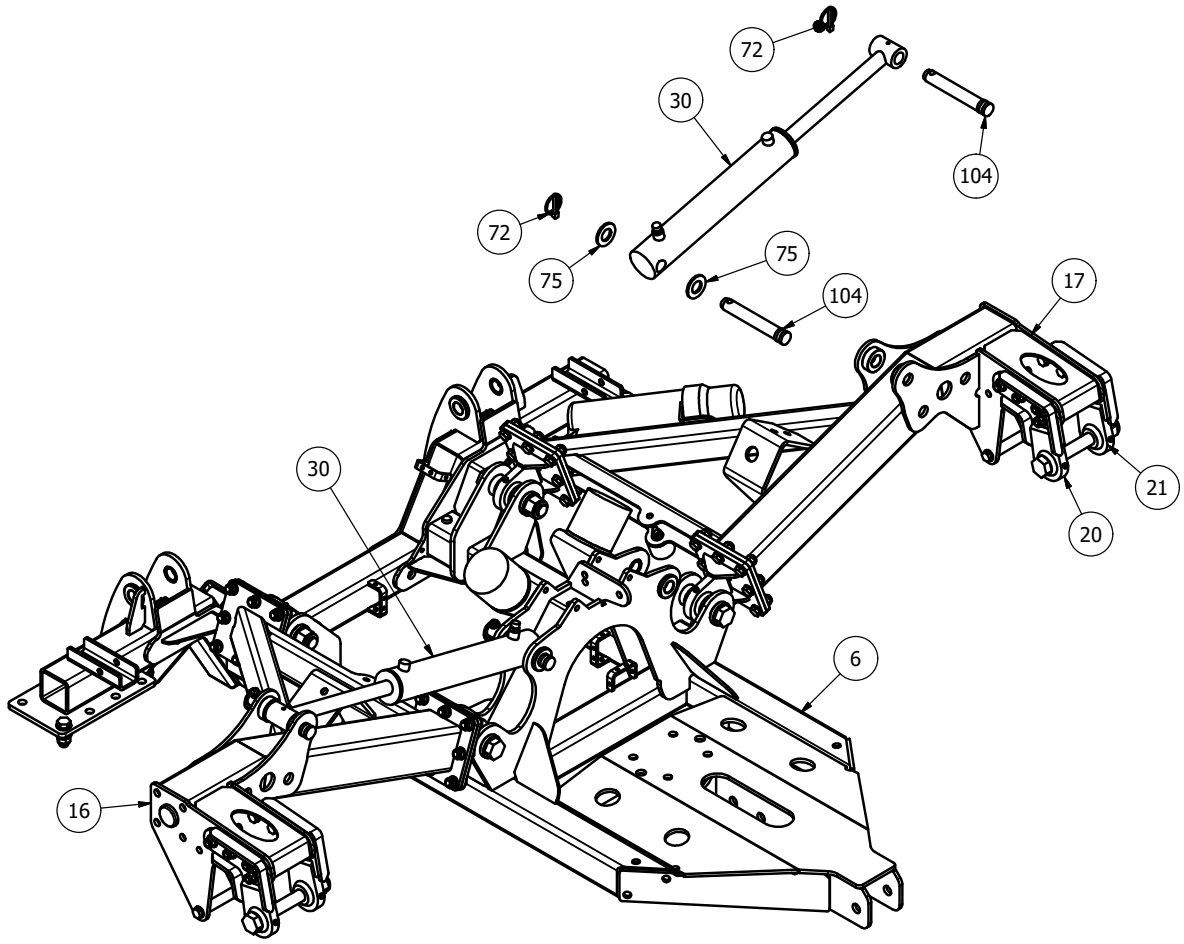
Use oil which conforms to 85W/140 standards.

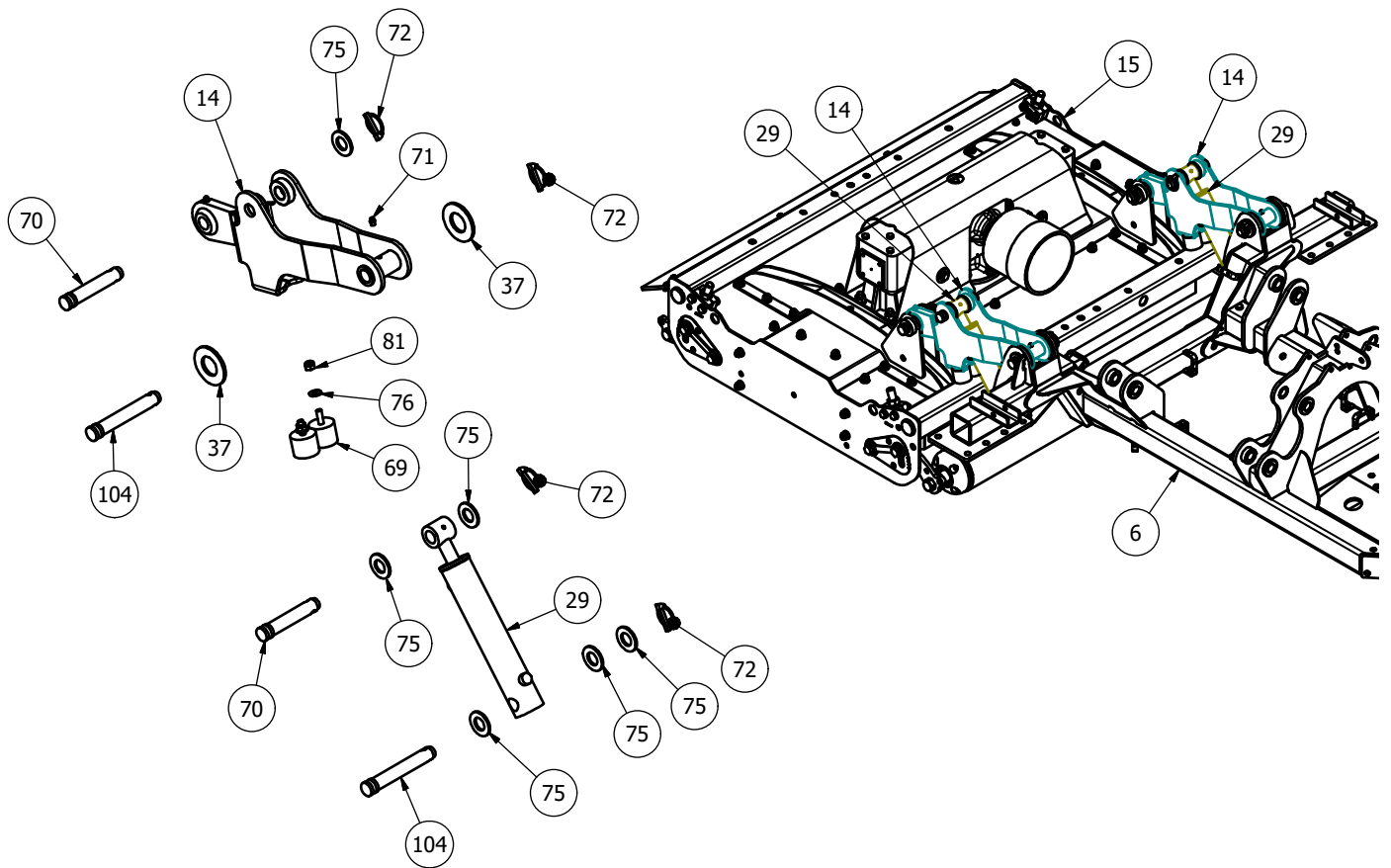
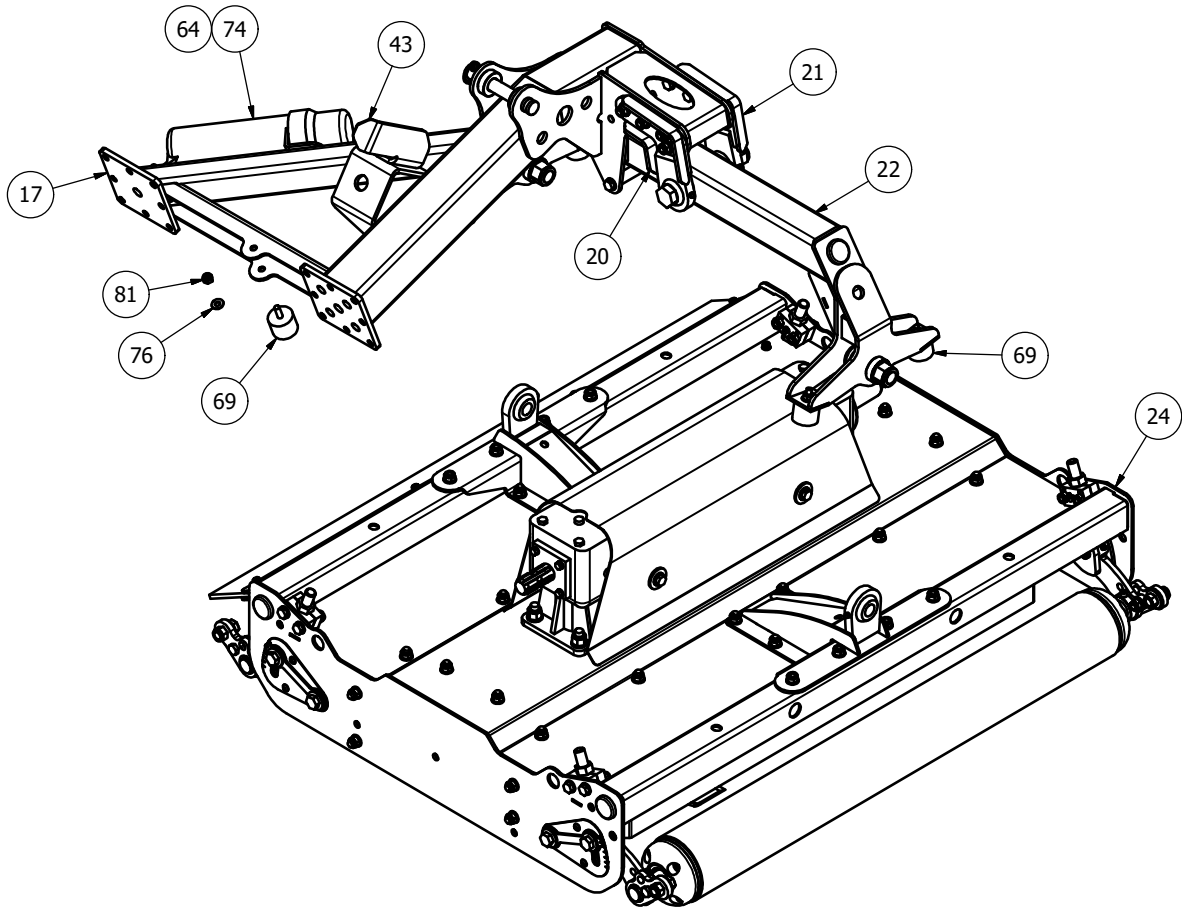
	Grease points	Initially	25 hours	80 hours	400 hours
PTO Shafts		●	●		
Roller height adjuster block	4x3			●	
Roller height adjuster rod	4x3			●	
Roller	2x6			●	
Drawbar hitch	1			●	
Rear deck pivot	4			●	
Wing arm pivot	2x2			●	
Wing hydraulic ram	1x2			●	
Wing pivot	2x2			●	
Wing tilt pivot	2x2			●	
Check oil levels in the gearboxes				●	
Replace oil in gearboxes					●

# MJ76 Contoura Spare Parts

## MJ76-360 General Assembly









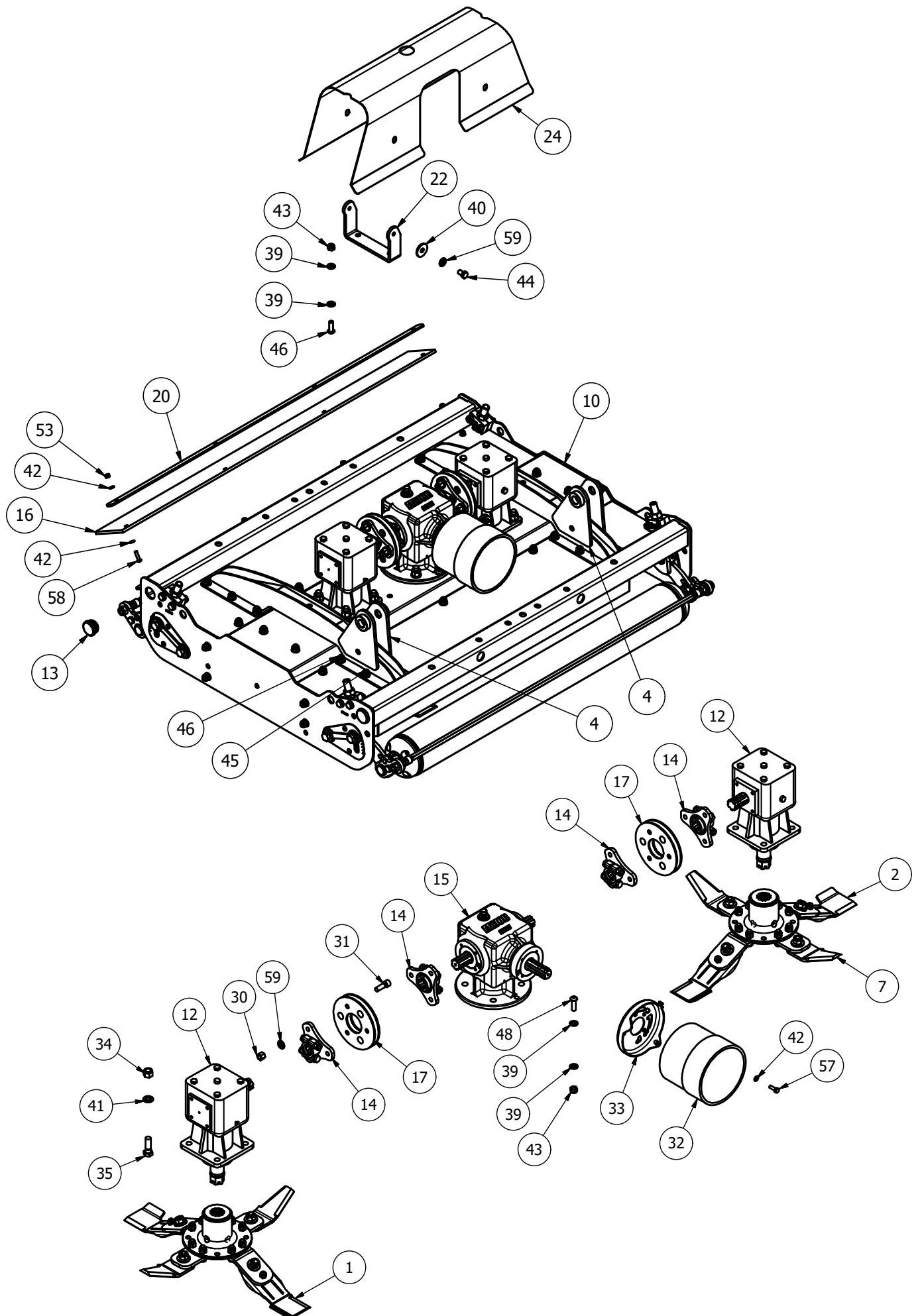
## MJ76-360 General Assembly - Parts list

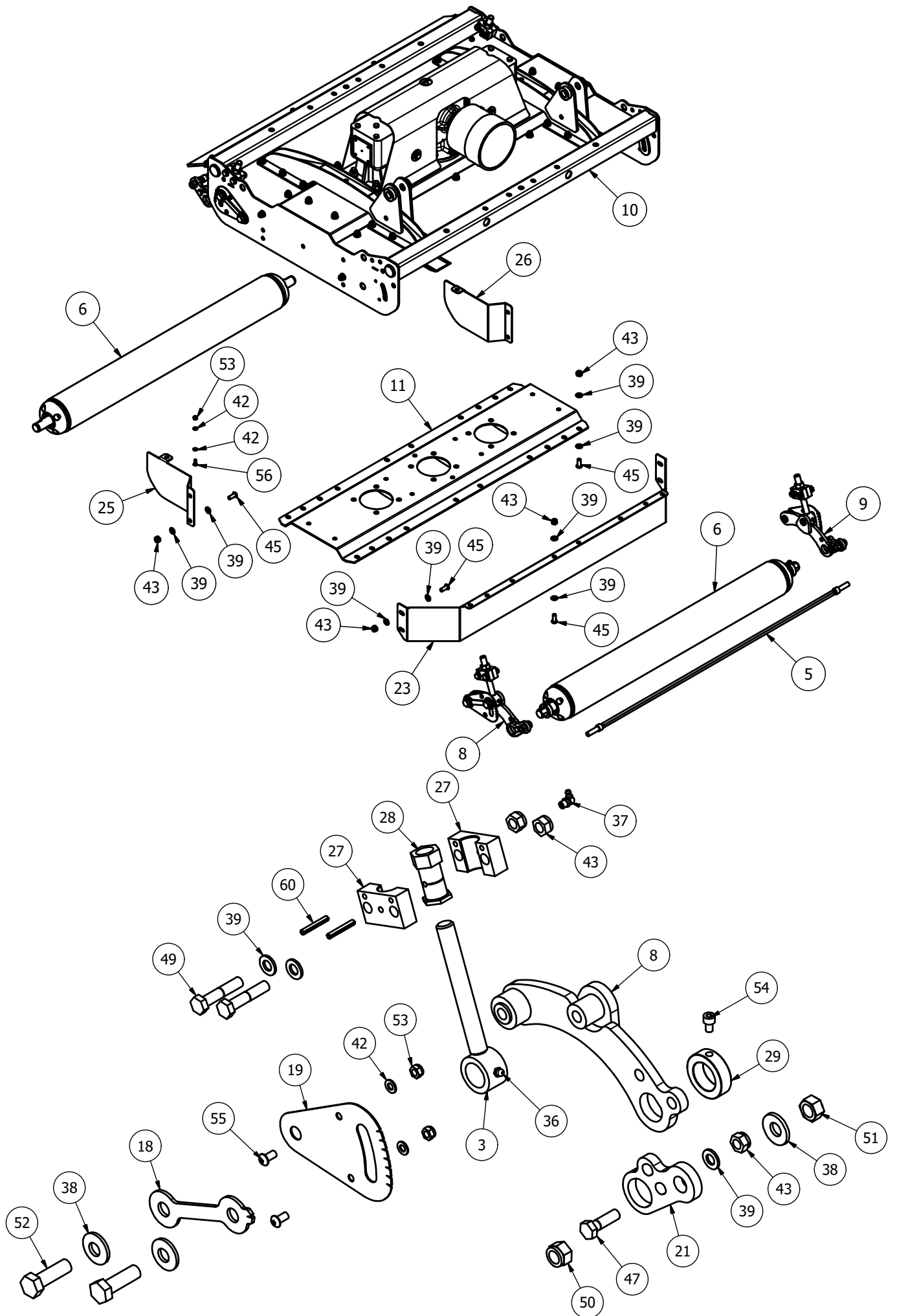
Item	Part No.	Description	Qty
1	2TKBC-2	CABLE LOCATION BAR	1
2	CTR-GRD01	PTO GUARD	2
<b>3</b>	<b>MJ30-560T-AB14</b>	<b>CYCLONE/SWIFT BRAKE STUB AXLE</b>	<b>1</b>
<b>4</b>	<b>MJ30-560T-AB14-H</b>	<b>CYCLONE/SWIFT BRAKE STUB AXLE</b>	<b>1</b>
<b>3 &amp; 4</b>	<b>MJ30-560T-AB25</b>	<b>STUB AXLE UNBRAKED (small wheel)</b>	<b>1</b>
<b>3 &amp; 4</b>	<b>MJ30-560T-AB12</b>	<b>STUB AXLE UNBRAKED (large wheel)</b>	<b>1</b>
5	MJ30-TRAILED-SE10	SWIVEL EYE HITCH	1
6	MJ76-360-CH01	CHASSIS	1
7	MJ76-360-DB30	DRAWBAR	1
8	MJ76-360-HT10	HITCH MOUNT	1
9	MJ76-360-LAT20	LATCH MOUNT	1
10	MJ76-360-LAT20H	LATCH MOUNT	1
11	MJ76-360-LAT40	SPRING LATCH	2
12	MJ76-360-LIT01	LIGHT MOUNT (RH)	1
13	MJ76-360-LIT01H	LIGHT MOUNT (LH)	1
14	MJ76-360-RDA20	REAR ARM	2
<b>15*</b>	<b>MJ76-360-RDGA01</b>	<b>REAR DECK ASSEMBLY</b>	<b>1</b>
16	MJ76-360-WA01	WING ARM (RH)	1
17	MJ76-360-WA01H	WING ARM (LH)	1
18	MJ76-360-WAP25	CAT 2 EYE	4
19	MJ76-360-WAP35	ARM TIE BAR	2
20	MJ76-360-WAP40	WING PIVOT CAT 2 EYE	2
21	MJ76-360-WAP40H	WING PIVOT CAT 2 EYE	2
22	MJ76-360-WAP50	WING ARM PIVOT	2
<b>23*</b>	<b>MJ76-360-WGGA01</b>	<b>WING ASSEMBLY (RH)</b>	<b>1</b>
<b>24*</b>	<b>MJ76-360-WGGA02</b>	<b>WING ASSEMBLY (LH)</b>	<b>1</b>
25	SWT-JK20	SWIFT / CYCLONE JACK	1
26	TDA-MGRD	WHEEL MUDGUARD	2
27	5582	DIA 38.3-42mm INSERT	6
28	LC360LED	LIGHT LOOM & REFLECTORS	1
29	MJ365-RDR	REAR DECK RAM	2
30	MJ365-WR	CONTOURA WING RAM	2
31	MJ76-360-GRD03	AXLE RUBBER	2
32	MOT10	DIA 100x100 BUFFER	2
33	S5D03100C60001	CLAMP COLLAR PTO	2
34	T501160CEC12C12	COLLAR-COLLAR PTO	1
35	TD-MGD14	MUD FLAP	2
<b>36*</b>	<b>WS603672</b>	<b>WIDE ANGLE 2380 FIXED SLIP</b>	<b>1</b>
<b>36*</b>	<b>WS605911</b>	<b>WIDE ANGLE 2480 SBOR</b>	<b>1</b>
37	MJ76-360-CH31	SPACER 80x40x5	4
38	MJ76-360-GRD04	GUARD CLAMP	2
39	MJ76-360-MD04	MUDGUARD MOUNT	2
40	TD-MGD11	MUD FLAP CLAMP	2
41	TD-MGD12	MUD FLAP CLAMP	2
42	MJ76-360-DB15	PTO STAND	1
43	MJ76-360-LAT30	LATCH STRIKER	1
44	MJ76-360-LAT30H	LATCH STRIKER	1
45	MJ76-360-MD02	MUDGUARD MOUNT	2
46	MJ76-360-MD03	MUDGUARD MOUNT	2
47	MJ76-360-MD05	MUDGUARD MOUNT	1
48	MJ76-360-MD05H	MUDGUARD MOUNT	1
49	TA-HCM04	CABLE MOUNT	1
50	TA-LGPLITL	LGP LIGHT BRACKET (LH)	1
51	TA-LGPLITR	LGP LIGHT BRACKET (RH)	1

52	8SM9-3	BLADE BACK SPACER	2
53	MJ76-360-WAP30	WEAR SLIDE	4
54	T278-S1	T278 G/BOX STUD	4
55	11402	HOSE CLIP 149-161	2
56	190.000.545	PTO GUARD (EXTENDED OVAL)	1
57	190000660	PLASTIC GUARD COVER	1
58	190000661	METAL GUARD BASE	1
59	199099	DIA 15-17mm INSERT	2
60	1F	1" FINE NYLOC NUT	10
61	1x5FBZP	1"x5" FINE BOLT	4
62	1x6FBZP	1"x6" FINE BOLT	4
63	1x8FBZP	1"x8" FINE BOLT	2
64	22116G	SELF DRILL 6.3x22mm	4
<b>65*</b>	<b>T278A</b>	<b>T278 RATIO 1.92 4-WAY (278221)</b>	<b>1</b>
66	3006512	DIA 685x305mm	2
67	37	LINCH PIN DIA 6	1
68	5/8F	5/8" FINE NYLOC NUT	4
69	53005803	DIA 50x40xM10 BUFFER	16
70	81	CAT 2 PIN DIA 25.4x110mm	4
71	851	GREASE NIPPLE M8x1.25 STR	2
72	AN099/10	LINCH PIN DIA 9.5	12
73	BRS	BRAKE RAM	2
74	DH-10404	DOCUMENT HOLDER 350x85	1
75	FW1	DIA 1" FLAT WASHER	35
76	FWM10	M10 FLAT WASHER	18
77	FWM12	M12 FLAT WASHER	100
78	FWM16	M16 FLAT WASHER	44
79	FWM20	M20 FLAT WASHER	8
80	FWM8	M8 FLAT WASHER	104
81	M10	M10 NYLOC NUT	17
82	M10x110BZP	M10x110 BOLT	1
83	M10x30SZP	M10x30 SET BOLT	2
84	M12	M12 NYLOC NUT	60
85	M12x150BZP	M12x150 BOLT	2
86	M12x25SKBH	M12x25 SOCKET BUTTON HEAD 10.9	4
87	M12x35BZP	M12x35 BOLT	20
88	M12x40BZP	M12x40 BOLT	32
89	M12x50BZP	M12x50 BOLT	2
90	M16	M16 NYLOC NUT	24
91	M16x35SZP	M16x35 SET BOLT	4
92	M16x50BZP	M16x50 BOLT	22
93	M20	M20 NYLOC NUT	4
94	M20x130BZP	M20x130 BOLT	4
95	M8	M8 NYLOC NUT	46
96	M8x16SZP	M8x16 SET BOLT	16
97	M8x25BZP	M8x25 BOLT	2
98	M8x25SKBH	M8x25 SOCKET BUTTON HEAD 10.9	30
99	M8x30SKBH	M8x30 SOCKET BUTTON HEAD 10.9	8
100	M8x35SKBH	M8x35 SOCKET BUTTON HEAD 10.9	6
101	NL12SP	M12 SP NORDLOCK	16
102	NL16SP	M16 SP NORDLOCK	8
103	S15501	CAT 0 PIN DIA 16x97mm	1
104	S80	CAT 2 PIN DIA 25.4x142mm	8
105	WS124759-1	FLEXABLE WS PTO GUARD	2
106	WS124759-2	PLASTIC WS PTO GUARD	2

\* - further details provided

# MJ76 Rear deck (MJ76-360-RDGA01)





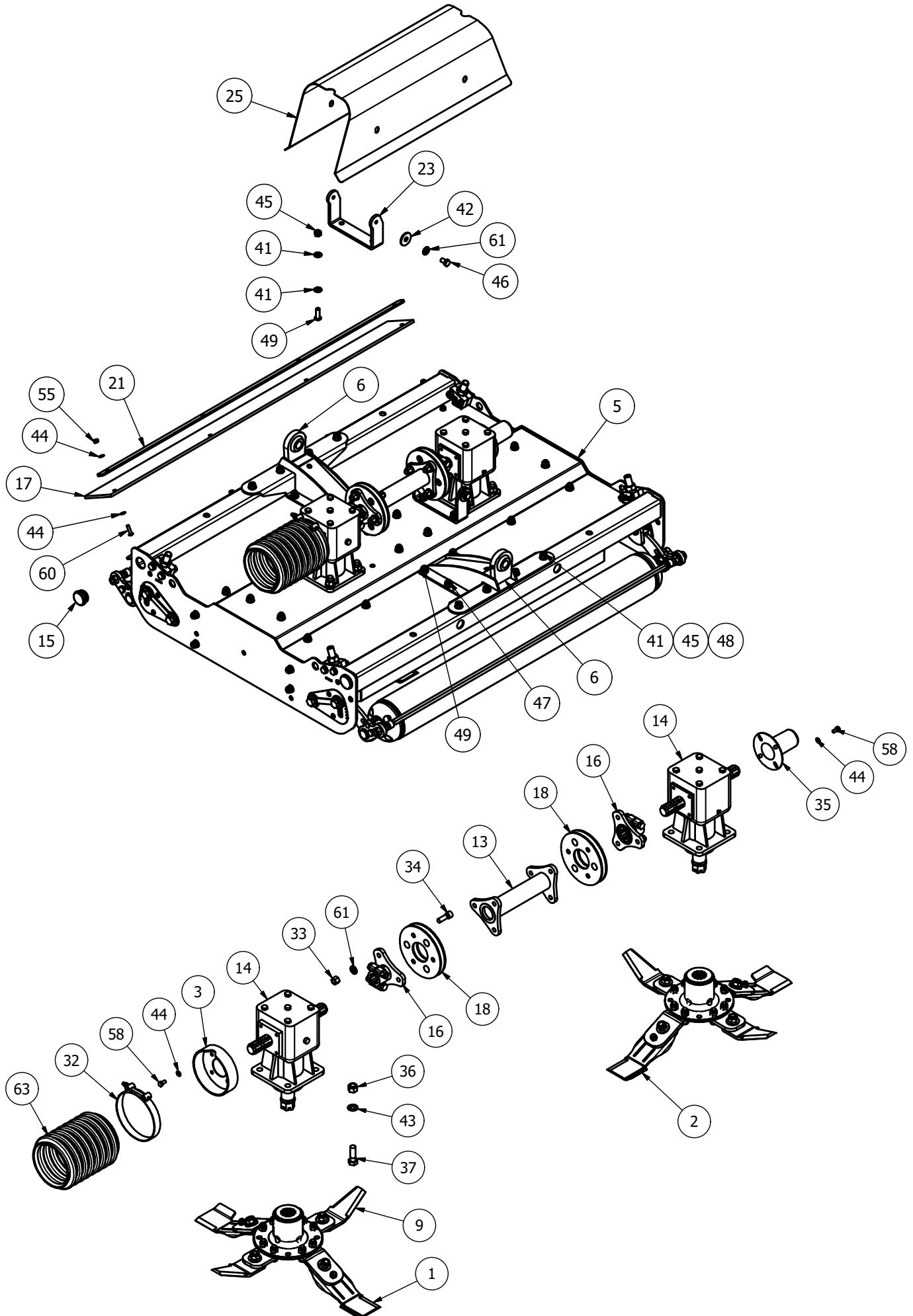


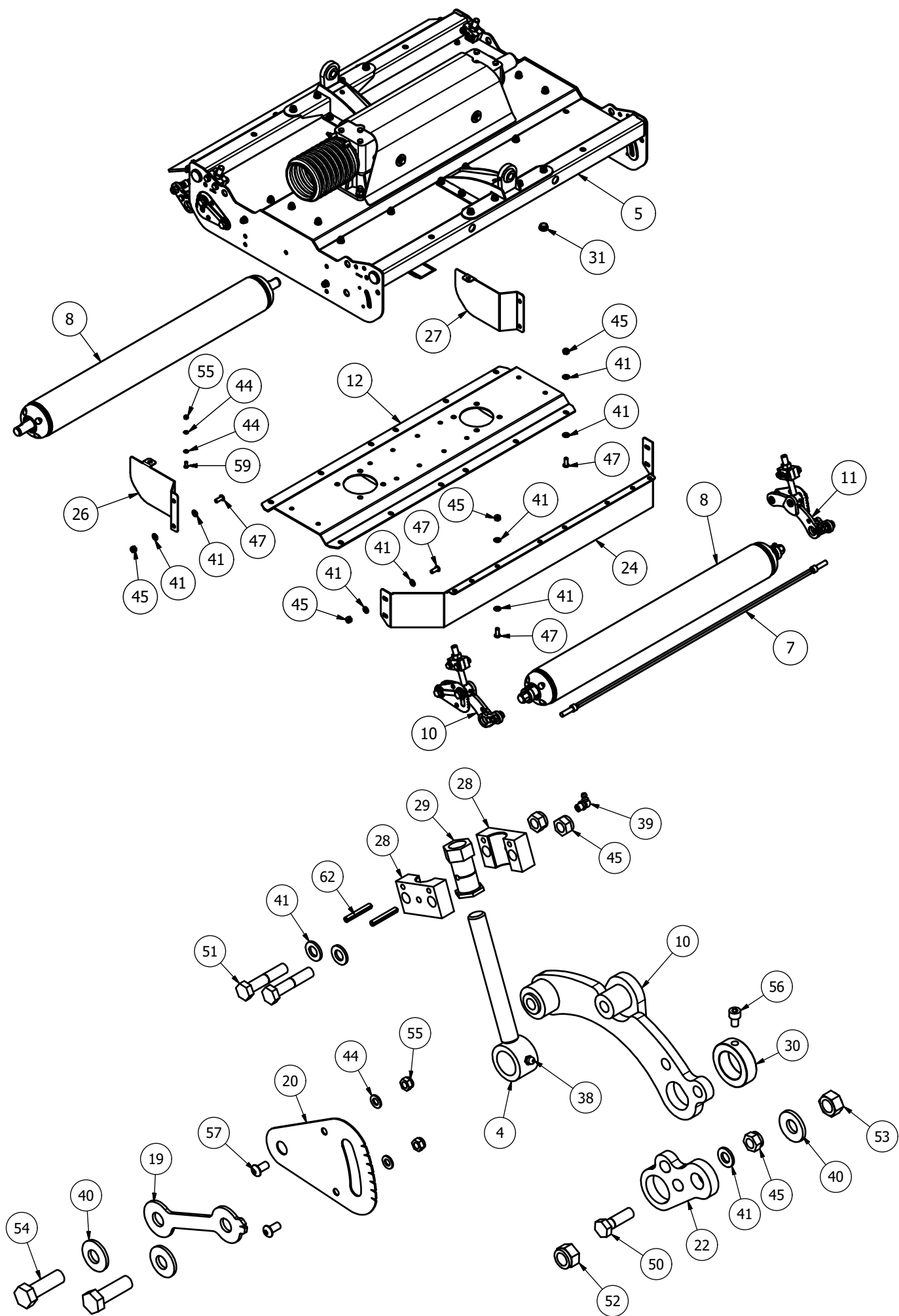
## MJ76 Rear deck (MJ76-360-RDGA01) - Parts list

Item	Part No.	Description	Qty				
1*	725-BLD8-FL5	DIA 725 BLADE Anti_Clk	1	31	12x112FSKS	1/2"x1 1/2" FINE SOCKET HEAD 12.9	12
2*	725-BLD8-FR5	DIA 725 BLADE Clk	1	32	190000660	PLASTIC GUARD COVER	1
3	MJ76-360-HG65	M20 THREADED ADJUSTER	4	33	190000661	METAL GUARD BASE	1
4	MJ76-360-RDPM01	REAR DECK PIVOT MOUNT	2	34	5/8F	5/8" FINE NYLOC NUT	12
5	MJ76-360-WSCRPR-01	360 WING SCRAPER BAR	2	35	58x2FBZP	5/8"x2" FINE BOLT	12
6*	TDW-ROL	16ft TDR ROLLER	2	36	851	GREASE NIPPLE M8x1.25 STR	4
7*	XBLD-KIT6	OVERLAP BLADE KIT	2	37	870	GREASE NIPPLE M8x90x1.25P	4
8	8400RM-RPV01	ROLLER PIVOT	2	38	CW39174	DISC SPRING 39x17x4 (YELLOW)	12
9	8400RM-RPV10	ROLLER PIVOT	2	39	FWM12	M12 FLAT WASHER	128
10	MJ76-360-RD01	REAR DECK	1	40	FWM12XL	M12 FLAT WASHER (EX-LARGE)	4
11	MJ76-360-UST05	REAR UNDERSIDE TROUGH	1	41	FWM16	M16 FLAT WASHER	12
12*	LF205H-S	6 SPLINE 'L' BOX 1.92 (205872-S)	2	42	FWM8	M8 FLAT WASHER	24
13	5582	DIA 38.3-42mm INSERT	4	43	M12	M12 NYLOC NUT	70
14	CM25-DRV	6 SPLINE STAR DRIVE	4	44	M12x20SZP	M12x20 SET BOLT	4
15*	JJ.03499	6 SPLINE 'T' BOX 1:1.9 3way	1	45	M12x30SKBH	M12x30 SOCKET BUTTON HEAD 10.9	40
16	MJ76-360-GRD01	WING RUBBER FLAP	1	46	M12x35SKBH	M12x35 SOCKET BUTTON HEAD 10.9	16
17	MJRC-23-40	23mm COUPLING 40 SHORE	2	47	M12x40BZP	M12x40 BOLT	4
18	8400RM-HG03	HEIGHT INDICATOR	4	48	M12x40SKBH	M12x40 SOCKET BUTTON HEAD 10.9	2
19	MJ60-200-HG02	HEIGHT GUIDE	4	49	M12x60BZP	M12x60 BOLT	8
20	MJ76-360-GRD02	WING RUBBER CLAMP	1	50	M16	M16 NYLOC NUT	4
21	SCRPR-SQ12-02	SOCKET HEAD SCRAPER MOUNT	4	51	M16HEX	M16 PLAIN NUT	4
22	8400RM-CV25	GUARD BASE MOUNT	2	52	M16x50SZP	M16x50 SET BOLT	8
23	MJ76-360-AF01	AERO-FOIL	1	53	M8	M8 NYLOC NUT	14
24	MJ76-360-CV05	REAR COVER	1	54	M8x12SKS	M8x12mm SOCKET HEAD 12.9	4
25	SW2-240-DF02	REAR DEFLECTOR (RH)	1	55	M8x16SKBH	M8x16 SOCKET BUTTON HEAD 10.9	8
26	SW2-240-DF02H	REAR DEFLECTOR (LH)	1	56	M8x20SKBH	M8x20 SOCKET BUTTON HEAD 10.9	2
27	8400RM-HG76	HEIGHT PIVOT BLOCK	8	57	M8x25SZP	M8x25 SET BOLT	4
28	8400RM-HG77	M20 HEX ADJUSTER	4	58	M8x30SKBH	M8x30 SOCKET BUTTON HEAD 10.9	4
29	RM-RSN3	SHAFT COLLAR DIA 35	4	59	NL12SP	M12 SP NORDLOCK	16
30	12HEX109	1/2HEX10.9	12	60	S1215	ROLL PIN DIA 6x40	8

\* - further details provided

# MJ76-360 Left wing (MJ76-360-WGGA02)



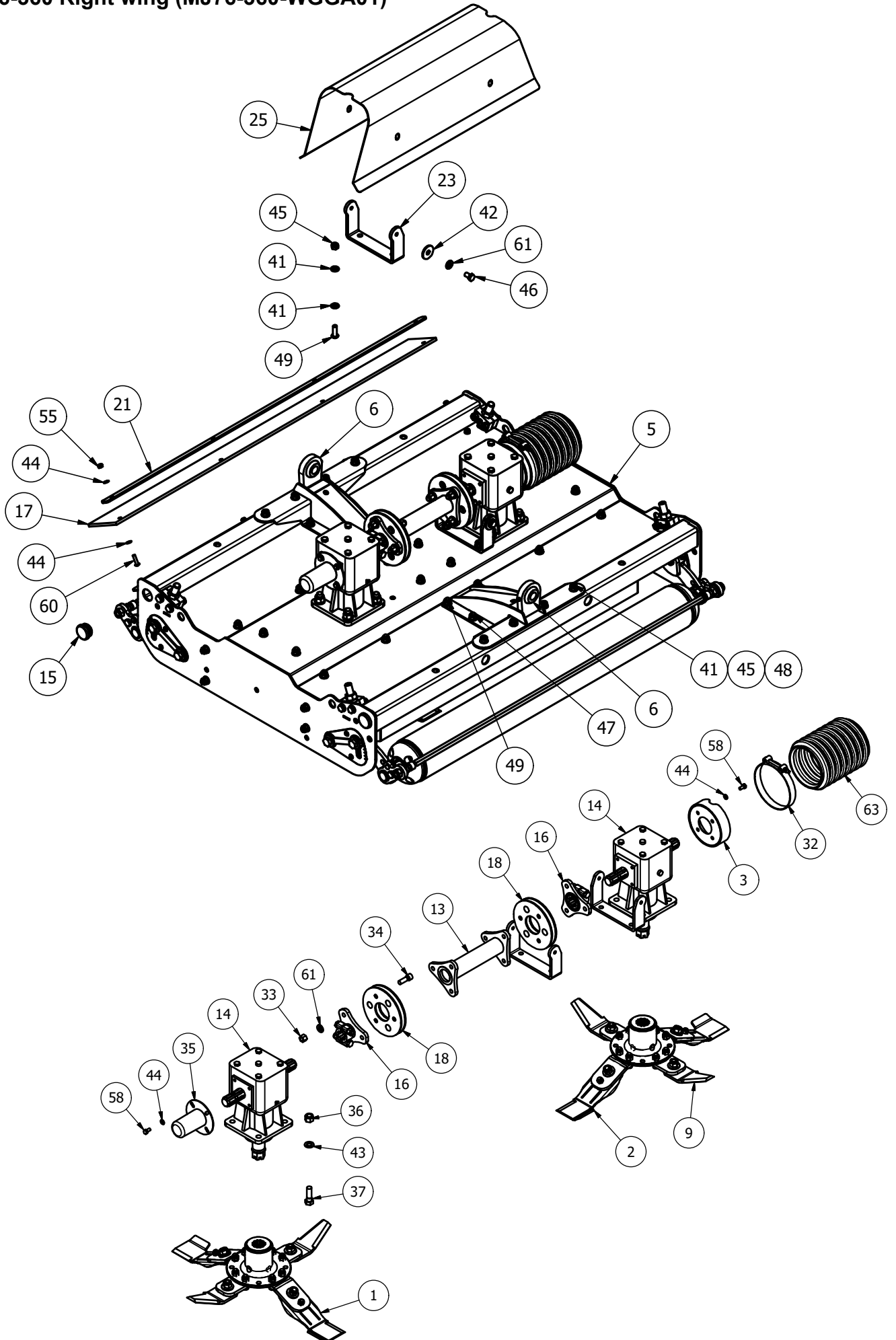


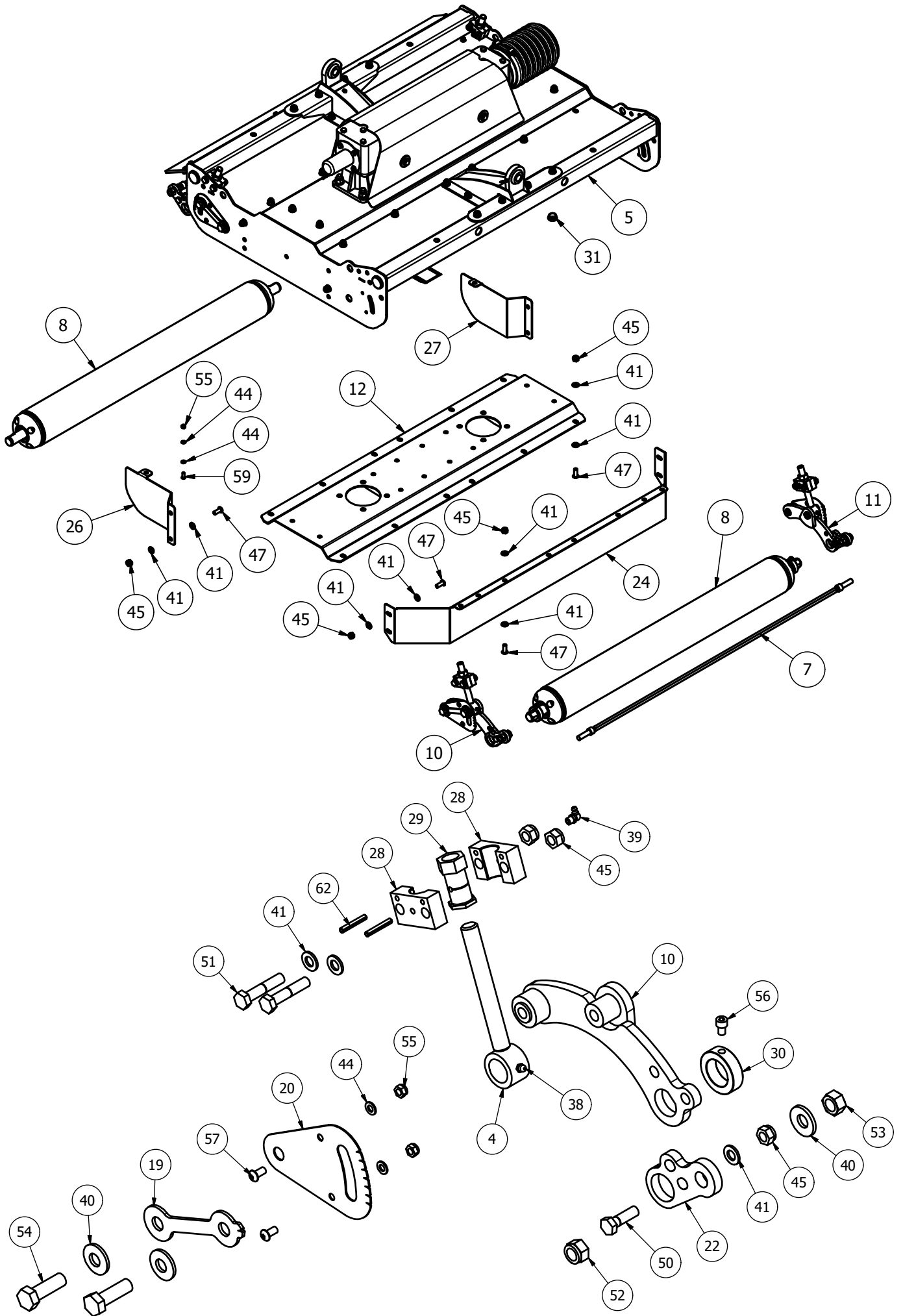
## MJ76-360 Left wing (MJ76-360-WGGA02) - Parts list

Item	Part No.	Description	Qty
1*	725-BLD8-FL5	DIA 725 BLADE Anti_Clk	1
2*	725-BLD8-FR5	DIA 725 BLADE Clk	1
3	CTR-GRD01	PTO GUARD	1
4	MJ76-360-HG65	M20 THREADED ADJUSTER	4
5	MJ76-360-WG01	WING DECK	1
6	MJ76-360-WPM20	WING PIVOT MOUNT	2
7	MJ76-360-WSCRPR-01	360 WING SCRAPER BAR	2
8*	TDW-ROL	16ft TDR ROLLER	2
9*	XBLD-KIT6	OVERLAP BLADE KIT	2
10	8400RM-RPV01	ROLLER PIVOT	2
11	8400RM-RPV10	ROLLER PIVOT	2
12	MJ76-360-UST01	WING UNDERSIDE TROUGH	1
13	0940B026001	254mm DRIVE	1
14*	LF205TH	6 SPLINE 'T' BOX RATIO 1.92 (205874)	2
15	5582	DIA 38.3-42mm INSERT	4
16	60CSD	60mm STAR DRIVE	2
17	MJ76-360-GRD01	WING RUBBER FLAP	1
18	MJRC-23-40	23mm COUPLING 40 SHORE	2
19	8400RM-HG03	HEIGHT INDICATOR	4
20	MJ60-200-HG02	HEIGHT GUIDE	4
21	MJ76-360-GRD02	WING RUBBER CLAMP	1
22	SCRPR-SQ12-02	SOCKET HEAD SCRAPER MOUNT	4
23	8400RM-CV25	GUARD BASE MOUNT	2
24	MJ76-360-AF01	AERO-FOIL	1
25	MJ76-360-CV03	WING COVER	1
26	SW2-240-DF02	REAR DEFLECTOR (RH)	1
27	SW2-240-DF02H	REAR DEFLECTOR (LH)	1
28	8400RM-HG76	HEIGHT PIVOT BLOCK	8
29	8400RM-HG77	M20 HEX ADJUSTER	4
30	RM-RSN3	SHAFT COLLAR DIA 35	4
31	111044	DIA 26-30mm INSERT	8
32	11402	HOSE CLIP 149-161	1
33	12HEX109	1/2HEX10.9	12
34	12x112FSKS	1/2"x1 1/2" FINE SOCKET HEAD 12.9	12
35	190592	PTO HAT	1
36	5/8F	5/8" FINE NYLOC NUT	8
37	58x2FBZP	5/8"x2" FINE BOLT	8
38	851	GREASE NIPPLE M8x1.25 STR	4
39	870	GREASE NIPPLE M8x90x1.25P	4
40	CW39174	DISC SPRING 39x17x4 (YELLOW)	12
41	FWM12	M12 FLAT WASHER	116
42	FWM12XL	M12 FLAT WASHER (EX-LARGE)	4
43	FWM16	M16 FLAT WASHER	8
44	FWM8	M8 FLAT WASHER	28
45	M12	M12 NYLOC NUT	64
46	M12x20SZP	M12x20 SET BOLT	4
47	M12x30SKBH	M12x30 SOCKET BUTTON HEAD 10.9	32
48	M12x30SKS	M12x30 SOCKET HEAD SCREW	8
49	M12x35SKBH	M12x35 SOCKET BUTTON HEAD 10.9	12
50	M12x40BZP	M12x40 BOLT	4
51	M12x60BZP	M12x60 BOLT	8
52	M16	M16 NYLOC NUT	4
53	M16HEX	M16 PLAIN NUT	4
54	M16x50SZP	M16x50 SET BOLT	8
55	M8	M8 NYLOC NUT	14
56	M8x12SKS	M8x12mm SOCKET HEAD 12.9	4
57	M8x16SKBH	M8x16 SOCKET BUTTON HEAD 10.9	8
58	M8x16SZP	M8x16 SET BOLT	8
59	M8x20SKBH	M8x20 SOCKET BUTTON HEAD 10.9	2
60	M8x30SKBH	M8x30 SOCKET BUTTON HEAD 10.9	4
61	NL12SP	M12 SP NORDLOCK	16
62	S1215	ROLL PIN DIA 6x40	8
63	WS124759-1	FLEXABLE WS PTO GUARD	1

\* - further details provided

# MJ76-360 Right wing (MJ76-360-WGGA01)



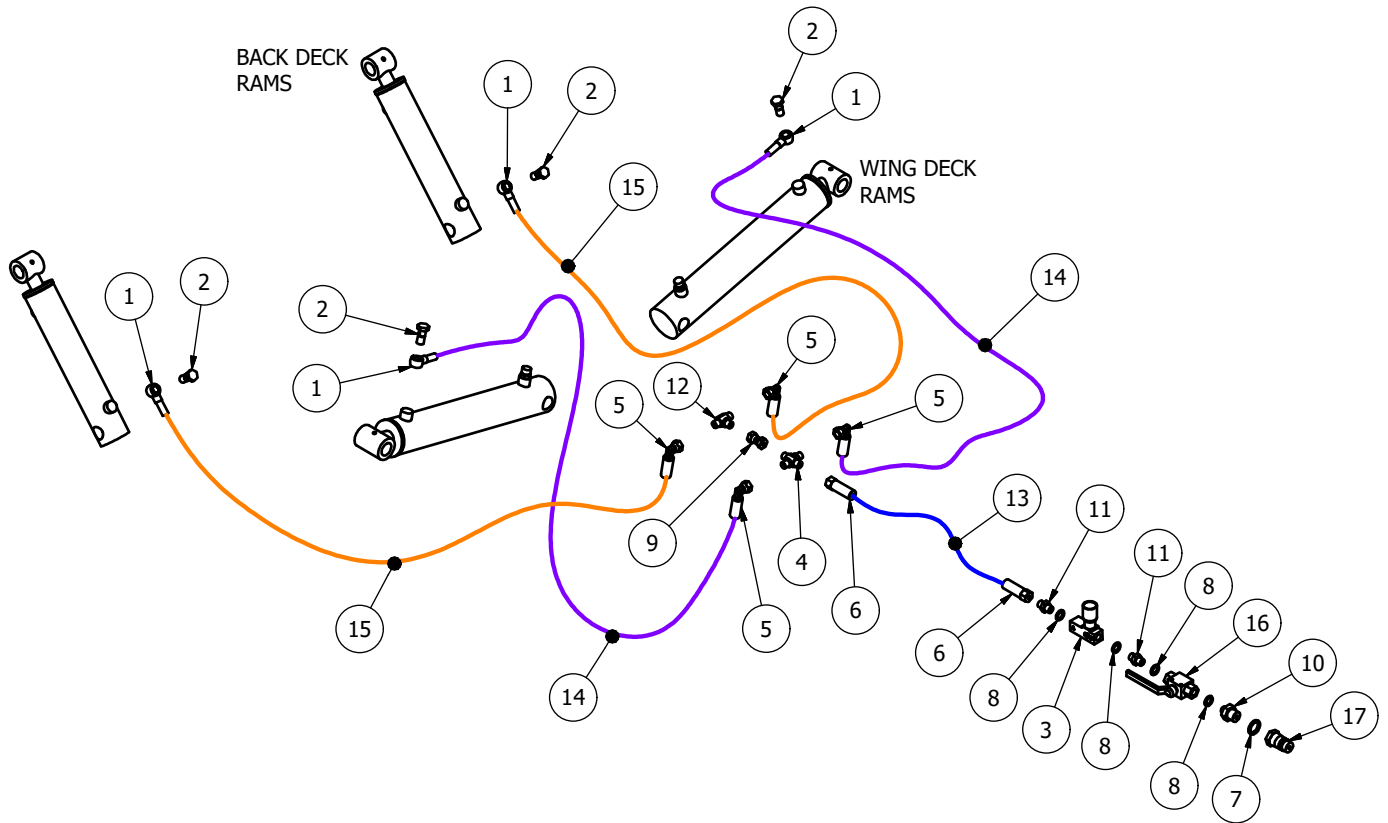


## MJ76-360 Right wing (MJ76-360-WGGA01) - Parts list

Item	Part No.	Description	Qty
1*	725-BLD8-FL5	DIA 725 BLADE Anti_Clk	1
2*	725-BLD8-FR5	DIA 725 BLADE Clk	1
3	CTR-GRD01	PTO GUARD	1
4	MJ76-360-HG65	M20 THREADED ADJUSTER	4
5	MJ76-360-WG01	WING DECK	1
6	MJ76-360-WPM20	WING PIVOT MOUNT	2
7	MJ76-360-WSCRPR-01	360 WING SCRAPER BAR	2
8*	TDW-ROL	16ft TDR ROLLER	2
9*	XBLD-KIT6	OVERLAP BLADE KIT	2
10	8400RM-RPV01	ROLLER PIVOT	2
11	8400RM-RPV10	ROLLER PIVOT	2
12	MJ76-360-UST01	WING UNDERSIDE TROUGH	1
13	0940B026001	254mm DRIVE	1
14*	LF205TH	6 SPLINE 'T' BOX RATIO 1.92 (205874)	2
15	5582	DIA 38.3-42mm INSERT	4
16	DRV-6S-52DC	6 SPLINE 50mm DRIVE	2
17	MJ76-360-GRD01	WING RUBBER FLAP	1
18	MJRC-23-40	23mm COUPLING 40 SHORE	2
19	8400RM-HG03	HEIGHT INDICATOR	4
20	MJ60-200-HG02	HEIGHT GUIDE	4
21	MJ76-360-GRD02	WING RUBBER CLAMP	1
22	SCRPR-SQ12-02	SOCKET HEAD SCRAPER MOUNT	4
23	8400RM-CV25	GUARD BASE MOUNT	2
24	MJ76-360-AF01	AERO-FOIL	1
25	MJ76-360-CV03	WING COVER	1
26	SW2-240-DF02	REAR DEFLECTOR (RH)	1
27	SW2-240-DF02H	REAR DEFLECTOR (LH)	1
28	8400RM-HG76	HEIGHT PIVOT BLOCK	8
29	8400RM-HG77	M20 HEX ADJUSTER	4
30	RM-RSN3	SHAFT COLLAR DIA 35	4
31	111044	DIA 26-30mm INSERT	8
32	11402	HOSE CLIP 149-161	1
33	12HEX109	1/2HEX10.9	12
34	12x112FSKS	1/2"x1 1/2" FINE SOCKET HEAD 12.9	12
35	190592	PTO HAT	1
36	5/8F	5/8" FINE NYLOC NUT	8
37	58x2FBZP	5/8"x2" FINE BOLT	8
38	851	GREASE NIPPLE M8x1.25 STR	4
39	870	GREASE NIPPLE M8x90x1.25P	4
40	CW39174	DISC SPRING 39x17x4 (YELLOW)	12
41	FWM12	M12 FLAT WASHER	116
42	FWM12XL	M12 FLAT WASHER (EX-LARGE)	4
43	FWM16	M16 FLAT WASHER	8
44	FWM8	M8 FLAT WASHER	28
45	M12	M12 NYLOC NUT	64
46	M12x20SZP	M12x20 SET BOLT	4
47	M12x30SKBH	M12x30 SOCKET BUTTON HEAD 10.9	32
48	M12x30SKS	M12x30 SOCKET HEAD SCREW	8
49	M12x35SKBH	M12x35 SOCKET BUTTON HEAD 10.9	12
50	M12x40BZP	M12x40 BOLT	4
51	M12x60BZP	M12x60 BOLT	8
52	M16	M16 NYLOC NUT	4
53	M16HEX	M16 PLAIN NUT	4
54	M16x50SZP	M16x50 SET BOLT	8
55	M8	M8 NYLOC NUT	14
56	M8x12SKS	M8x12mm SOCKET HEAD 12.9	4
57	M8x16SKBH	M8x16 SOCKET BUTTON HEAD 10.9	8
58	M8x16SZP	M8x16 SET BOLT	8
59	M8x20SKBH	M8x20 SOCKET BUTTON HEAD 10.9	2
60	M8x30SKBH	M8x30 SOCKET BUTTON HEAD 10.9	4
61	NL12SP	M12 SP NORDLOCK	16
62	S1215	ROLL PIN DIA 6x40	8
63	WS124759-1	FLEXABLE WS PTO GUARD	1

\* - further details provided

## MJ76-360 Hydraulics



Item	Part No.	Description	Qty
1	020310-04-04	1/4" BANJO BOLT INSERT	4
2	1-4B	1/4" BANJO BOLT	4
3	1251-5-14	1/4" RESTRICTOR (BLACK) 204010V	1
4	14CROSS	1/4" M/M/M/M CONNECTOR	1
5	CRP-1490B	1/4" CRIMP BLOCK 90	4
6	CRP1400	1/4" CRIMP (STRAIGHT)	2
7	EDOW12	1/2" DOWTY WASHER	1
8	EDOW14	1/4" DOWTY WASHER	4
9	EFF14	1/4" F/F CONNECTOR	1
10	EMM12-14	1/2"-1/4" M/M CONNECTOR	1
11	EMM14	1/4" M/M CONNECTOR	2
12	EMMMT14	1/4" M/M/M CONNECTOR	1
13	MJ76-HOSE01	1/4" x 3000mm Str to Str	1
14	MJ76-HOSE02	1/4" x 900mm Block 90 to Block 90	2
15	MJ76-HOSE03	1/4" x 1530mm Block 90 to Block 90	2
16	MOT37D	1/4" HYDRAULIC BALL VALVE	1
17	QRM12	1/2" QUICK RELEASE MALE	1

### Hydraulic Ram spares

Item	Part No.	Description	Qty
	MJ365-RDR-SK	SEAL KIT FOR MJ365-RDR	
	MJ365-WR-SK	SEAL KIT FOR MJ365-WR	

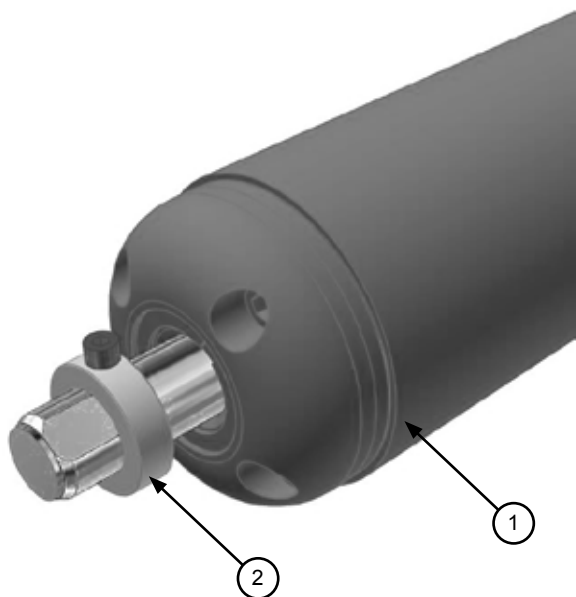
#### NOTE:

Threads on the hydraulic fittings are BSPP.  
BSPP - British Standard Parallel Pipe

Hydraulic rams part numbers are provided on the assembly drawings.

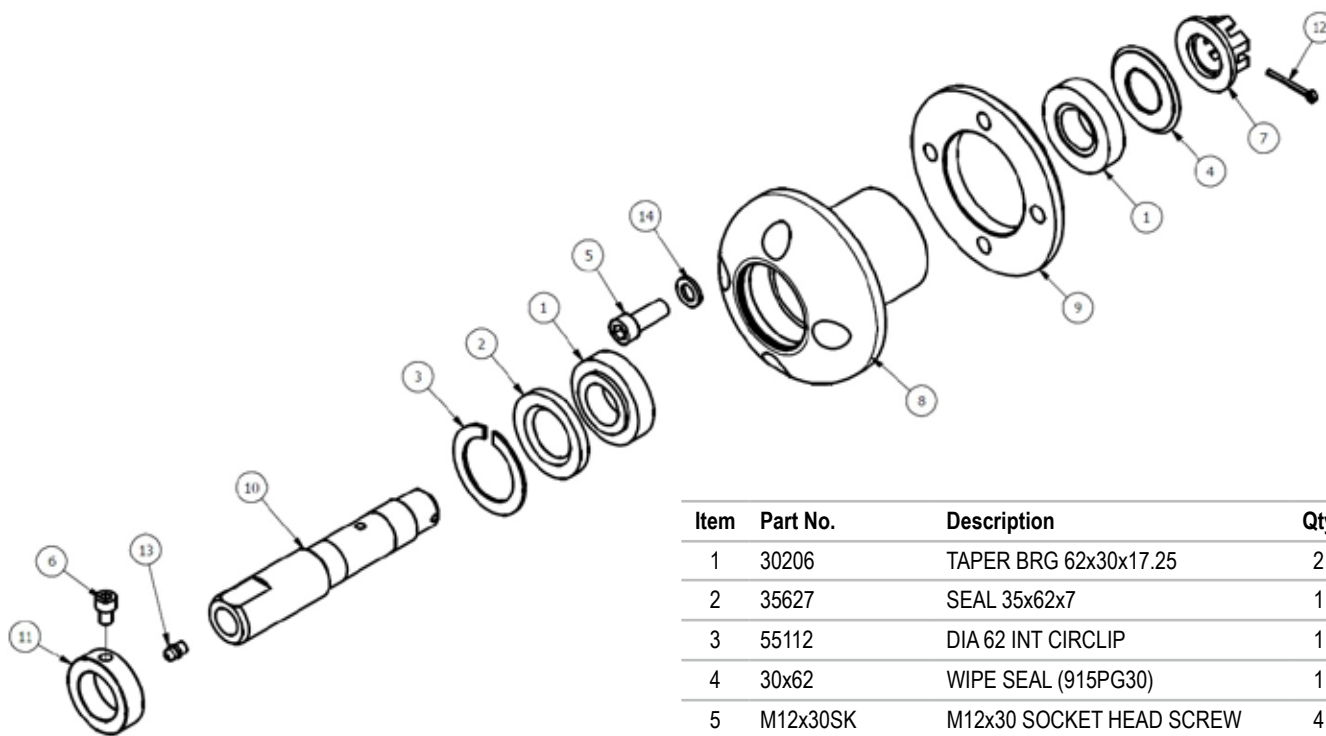


## MJ76 Rollers



Item	Part No.	Description	Qty
1	TDW-ROL	Roller	6 per MJ76-360
2	RM-RSN3	Collar 35mm c/w bolt	2 per roller

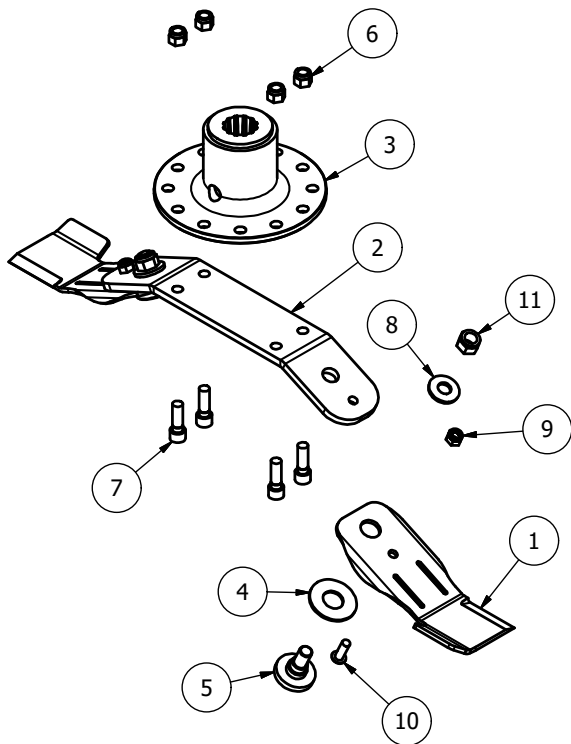
## Roller End - Parts List RM-04RBE



Item	Part No.	Description	Qty
1	30206	TAPER BRG 62x30x17.25	2
2	35627	SEAL 35x62x7	1
3	55112	DIA 62 INT CIRCLIP	1
4	30x62	WIPE SEAL (915PG30)	1
5	M12x30SK	M12x30 SOCKET HEAD SCREW	4
6	M8x12SK	M8x12mm SOCKET HEAD 12.9	1
7	RM-04NUT	NUT-WASHER WELDMENT	1
8	RM-04REH	ROLLER END HOUSING	1
9	RM-04REP	ROLLER END PLATE	1
10	RM-04RES	ROLLER END SHAFT	1
11	RM-RSN3	SHAFT COLLAR DIA 35	1
12	S1500	SPLIT PIN 1/8"x1 1/2"	1
13	S851	GREASE NIPPLE M8x1.25 STR	1
14	SWM12	M12 SPRING WASHER	4

## MJ76 Blades

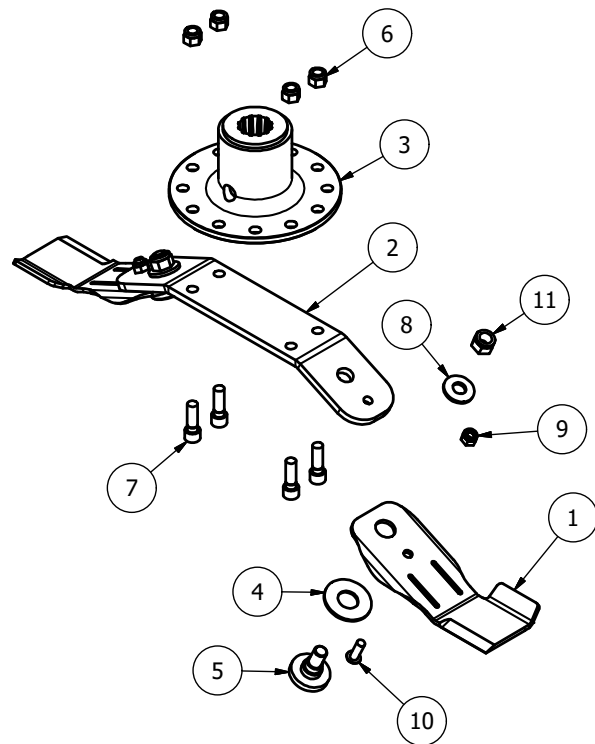
### 725-BLD8-FL5



Item	Part No.	Description	Qty
1	BLD-25025-AC405	BLADE 250xDia 25 (Anti-Clk)	2
2	BLDB6-315-25	BLADE BACK (315 CTR 25 deg)	1
3	DF-BMP	J205 G/BOX BLADE MOUNT	1
4	DSW50	DISC SPRING 50x25.4x2	2
5	BS-2507-03	THREADED BLADE SUPPORT	2
6	1/2F	1/2" FINE NYLOC NUT	4
7	12x112FSKS	1/2"x1 1/2" FINE SOCKET HEAD 12.9	4
8	CW39174	DISC SPRING 39x17x4 (YELLOW)	2
9	M10	M10 NYLOC NUT	2
10	M10x30SKBH	M10x30 SOCKET BUTTON HEAD 10.9	2
11	M16	M16 NYLOC NUT	2

MJ76-360 3 off

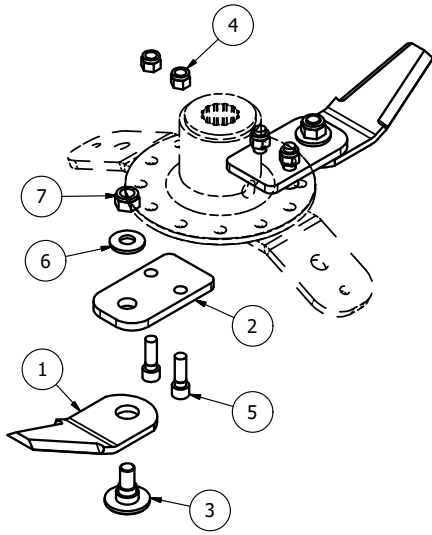
### 725-BLD8-FR5



Item	Part No.	Description	Qty
1	BLD-25025-C405	BLADE 250xDia 25 (Clk)	2
2	BLDB6-315-25	BLADE BACK (315 CTR 25 deg)	1
3	DF-BMP	J205 G/BOX BLADE MOUNT	1
4	DSW50	DISC SPRING 50x25.4x2	2
5	BS-2507-03	THREADED BLADE SUPPORT	2
6	1/2F	1/2" FINE NYLOC NUT	4
7	12x112FSKS	1/2"x1 1/2" FINE SOCKET HEAD 12.9	4
8	CW39174	DISC SPRING 39x17x4 (YELLOW)	2
9	M10	M10 NYLOC NUT	2
10	M10x30SKBH	M10x30 SOCKET BUTTON HEAD 10.9	2
11	M16	M16 NYLOC NUT	2

MJ76-360 3 off

**XBLD-KIT6**



Item	Part No.	Description	Qty
1	BLD-25025-OVL	OVERLAP FOR BLADE 250xDia 25	2
2	XBLD-BB-06	OVERLAP MOUNT	2
3	BS-2507-03	THREADED BLADE SUPPORT	2
4	1/2F	1/2" FINE NYLOC NUT	4
5	12x112FSKS	1/2"x1 1/2" FINE SOCKET HEAD 12.9	4
6	CW39174	DISC SPRING 39x17x4 (YELLOW)	2
7	M16	M16 NYLOC NUT	2

MJ76-360      6 off

## MJ76 Shafts

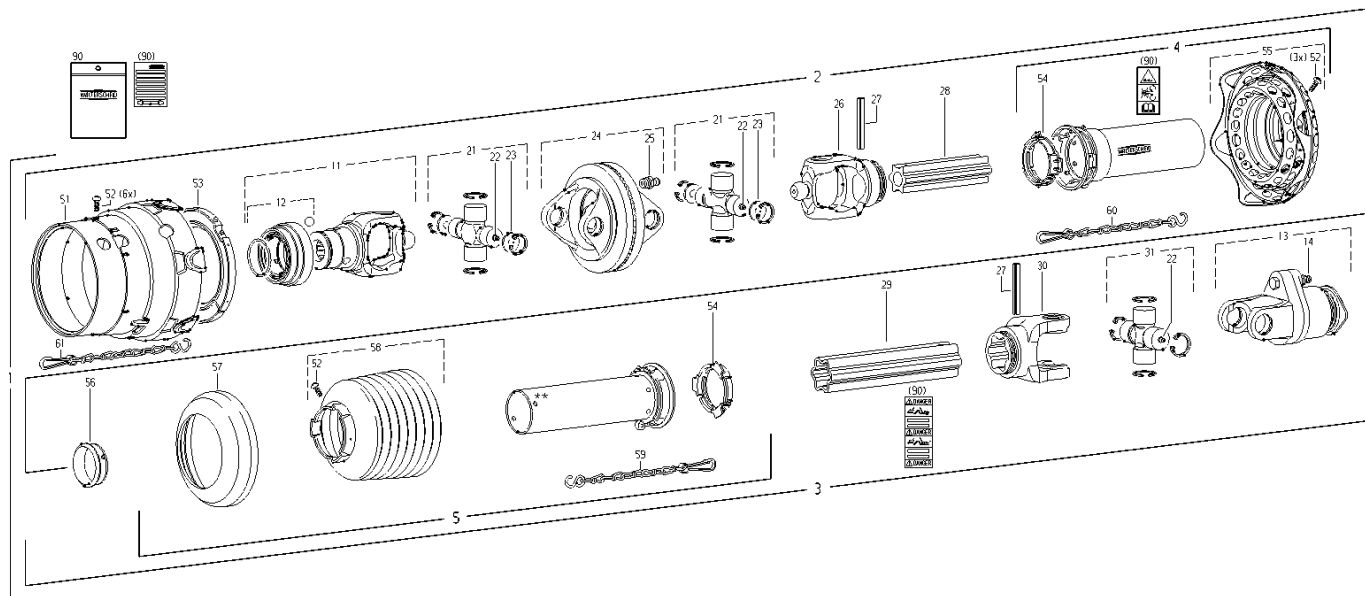
Item	Part No.	Description	Qty	Location
1	T501160CEC12C12	COLLAR-COLLAR PTO	1	Rear deck input shaft
2	WS603672	WIDE ANGLE 2380 FIXED SLIP	1	Tractor input shaft
2	WS605911	WIDE ANGLE 2480 SBOR	1	Tractor input shaft
3	S5D03100C60001	CLAMP COLLAR PTO	2	Wing shaft

## Accessories



Item	Part No.	Description
1	MW-24-30	Height adjustment wrench
2	3012LSCT	Height adjustment socket
3	ODS-205	Oil dip stick
4	MELTM20	Gearbox breather socket
5	MELT35	Tommy bar

## PTO shaft (605911)

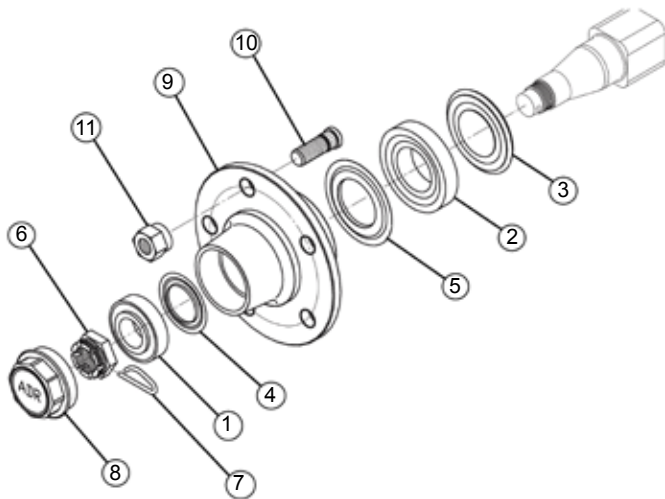


Item	Part No.	Description	Qty
1	605911	Wide-angle CV PTO drive shaft with guard	1
2		Inner wide-angle CV PTO drive shaft half with outer guard half	1
3		Outer PTO drive shaft half with inner guard half	1
4	116582	Outer guard half	1
	-	Shorten SC tube by 305 mm	
5	116329	Inner guard half	1
	-	Shorten SC tube by 5 mm	
	-	Shorten SC cone by 6 rib(s)	
11	135299	ASGE-yoke complete	1
12	135048	ASE-lock complete; size C	1
13	602503	Shear bolt clutch; right-hand rotation	1
	-	Shearing radius 56 mm	
14	020454	Hexagon bolt	1
21	135075	Cross and bearing kit complete	2
22	153207	Drive-in type lubrication fitting	3
23	365545	Plate	4
24	365722	Double yoke with lubrication fitting	1
25	020672	Lubrication fitting	1

26	161287	Inboard yoke	1
27	020617	Spring-type straight pin	2
28	699744	Profile tube; coated	1
	-	Shorten tube by 120 mm	
29	134935	Profile tube	1
	-	Shorten tube by 135 mm	
30	356906	Inboard yoke	1
31	116404	Cross and bearing kit complete	1
51	129928	Guard cone	1
52	365305	Screw	10
53	172715	Bearing ring	1
54	087276	Bearing ring	2
55	134847	Guard cone with flexible guard	1
56	158845	Bearing ring	1
57	359474	Reinforcing collar	1
58	199177	Guard cone; n= Number of ribs	1
	-	Shorten SC cone by 6 rib(s)	
59	044321	Safety chain	1
60	382078	Safety chain	1
90	118745	Instruction manual with set of decals;	1
	-	WARNING decal and DANGER decal	

## 50 SQ 5 Stud unbraked axle stub (MJ30-560T-AB12)

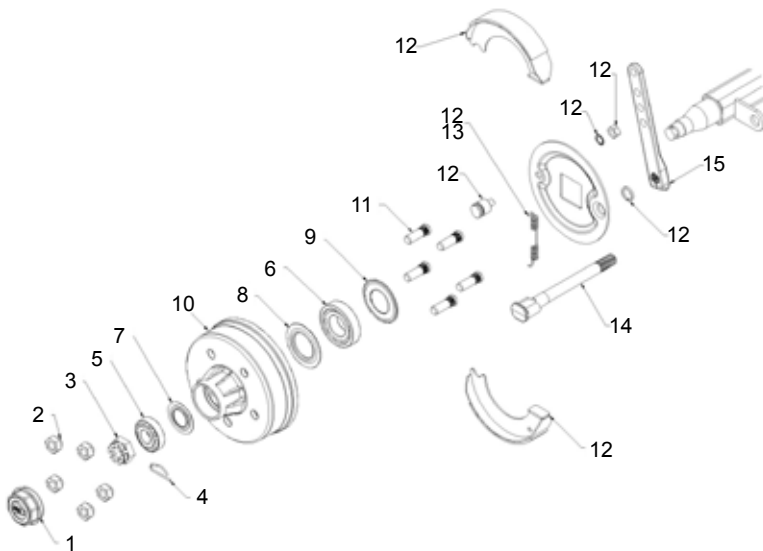
### Wheel kit hub



Item	Part No	Description
1	30206	Bearing 30206
2	30209	Bearing 30209
3	45x85	Oil seal
4	5510621	Nilos 30206
5	5510851	Nilos 30209
6	57527B1	Crown nut
7	58204	Spring pin
8	56106203	Cap
9	61L5JA001	Hub
10	57116B1	Stud
11	57316B1	Nut

## 50 SQ 5 Stud braked axle stub (to suit MJ30-560T-AB14)

### Wheel kit hub

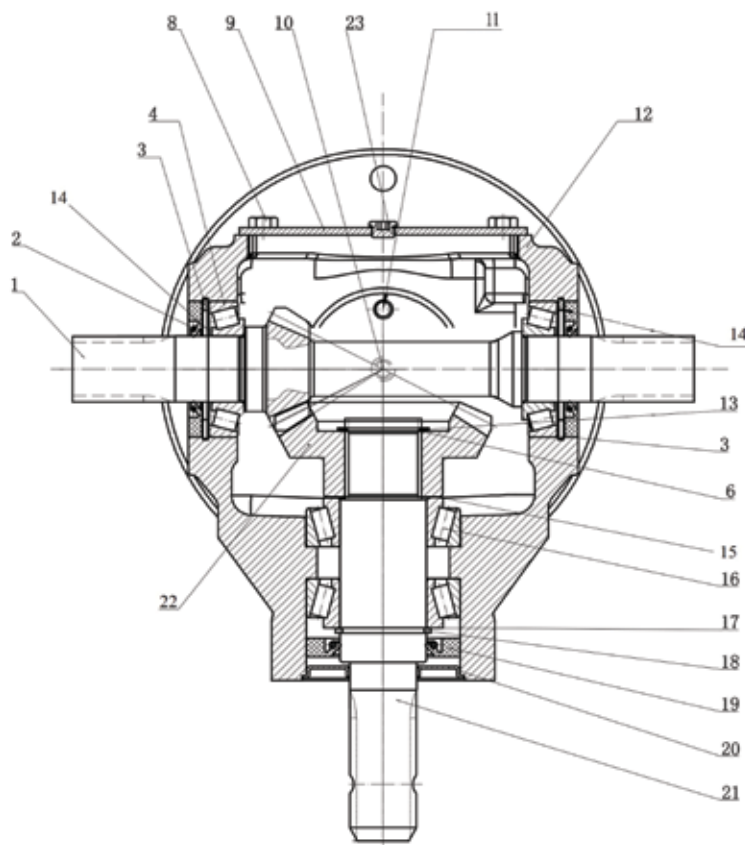


Item	Part No	Description
1	56106203	Cap
2	57316B1	Nut
3	57527B1	Crown nut
4	58204	Spring pin
5	30206	Bearing 30206
6	30209	Bearing 30209
7	5510621	Nilos 30206
8	5510851	Nilos 30209
9	45x85	Oil seal
10	65L5JA03	Drum 5 stud
11	57116B1	Stud
12	9RE0002	Brakes assembly (multiple parts)
13	738101	Spring only
14	7512021006	Cam shaft
15	7611201	Brake lever

## Bearing Kit

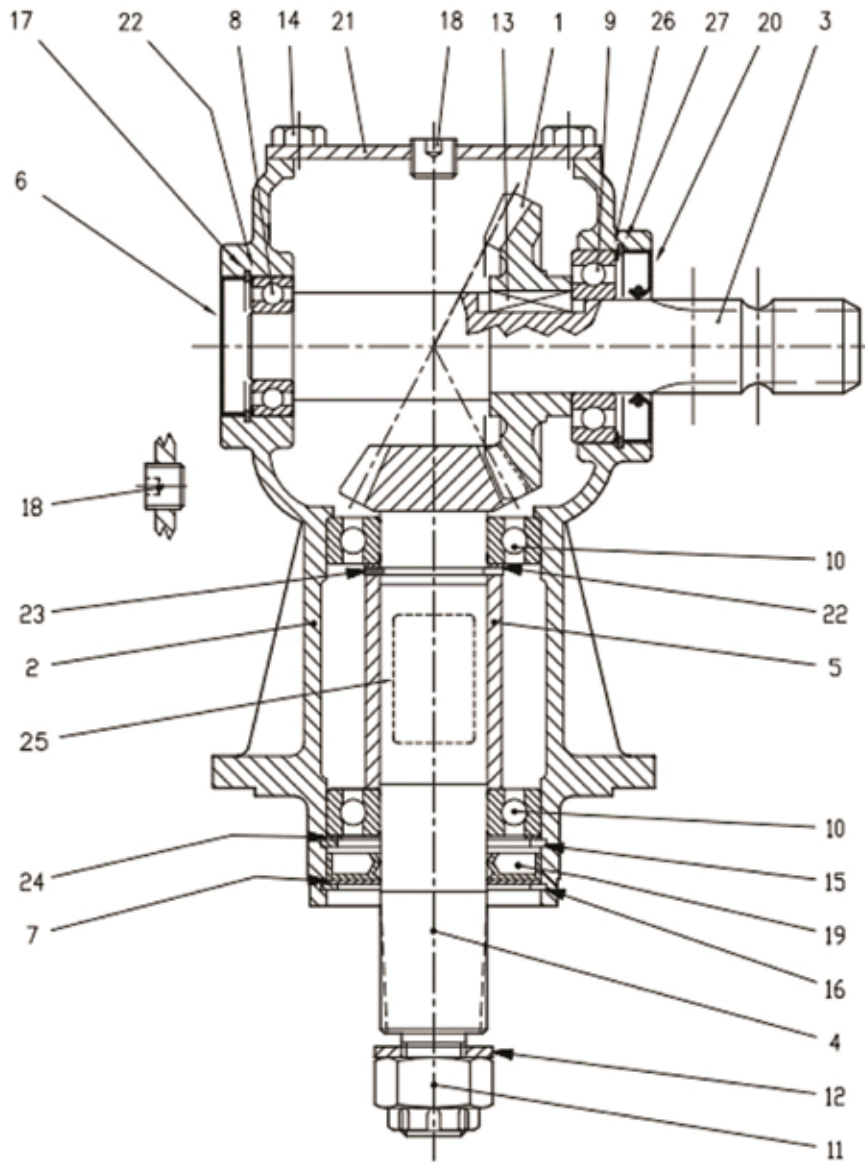
Part No	Description
BK20050	Bearing Kit for 50 SQ 5 Stud Unbraked
<b>Includes:</b>	
30206	Bearing
30209	Bearing
45X85	Seal

## JJ.03499-1.9 (1:1.9 3 way gearbox)



Item	Part No	Description	Qty
1	GB-03512-5001	output shaft	1
2		double-lip seal 35x72x7	2
3	8.5.2.00131.00	circlip $\Phi 72 \times 2.5$	2
4		tapered roller bearing 3020 (35x72x18.25)	2
6	0.240.7500	Adjusting washer (40.3x51.5)	
8	8.1.1.00326.00	Hexagon bolt M8x16	4
9	GB-03512-1300	Cover	1
10	8.6.6.00088.00	1/2 GAS oil plug	1
11	8.6.7.00269	1/2 GAS breather plug	1
12	GB-03512-0300	housing	1
13	8.5.1.00029	circlip $\Phi 40 \times \Phi 37.5 \times 1.75$	1
14	0.248.7500	adjusting washer (60.3x71.7)	2
15	0.285.7500	adjusting washer(40.3x61.7)	
16		tapered roller bearing 33100 (45x80x26)	2
17	0.175.7500	adjusting washer 45.2x54.8	
18	8.5.1.02368	Circlip $\Phi 45 \times 2.5$	1
19	8.7.1.00999	double-lip seal 45x80x10	1
20	GB-03512-7100	Protective washer	1
21	GB-03512-2000	Input shaft	1
22	GB-03512-6001	Bevel gear	1
23	9510.204.125	1/2 GAS oil plug+copper washer	1

# LF205H-205 872-1.92

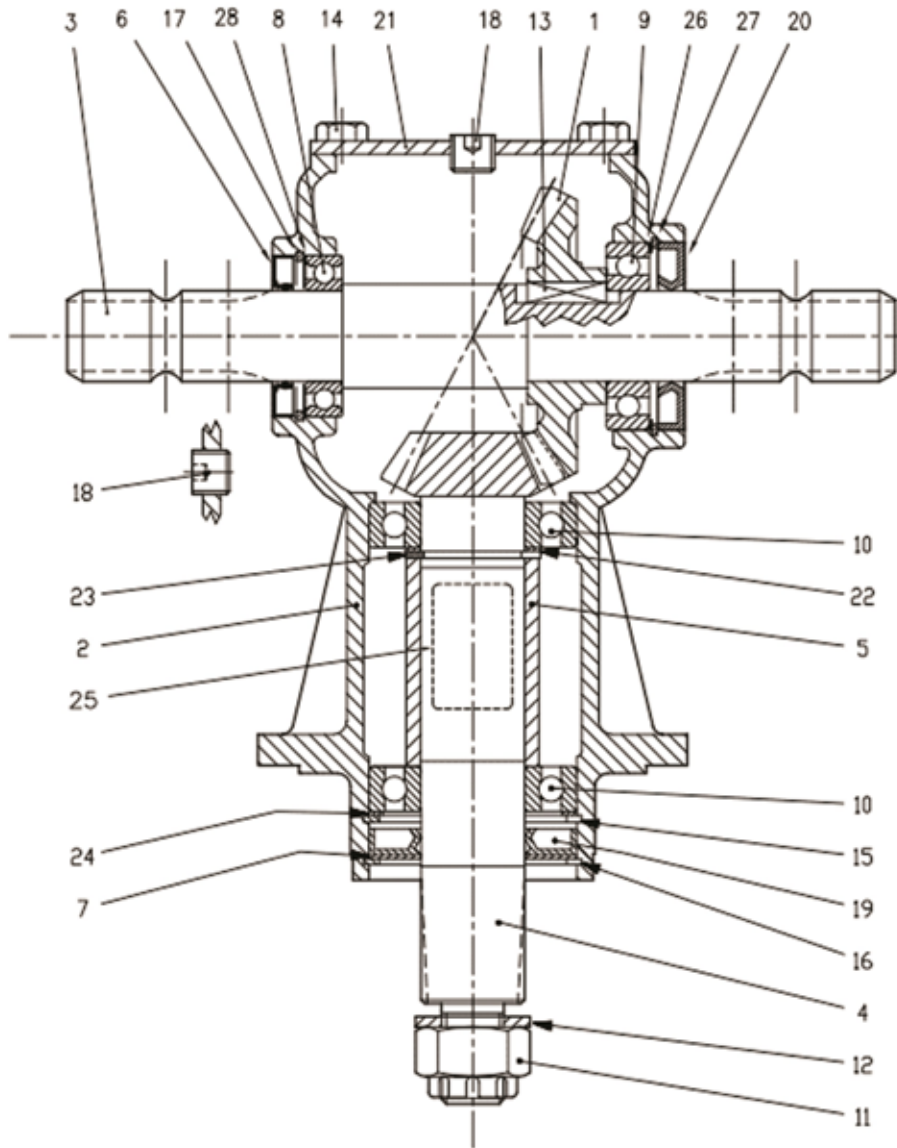


Item	Part No	Description	Qty
1	0.135.5000.00	0.135.5000.00 Crown Gear Z23 M5	1
2	0.205.0302.00	0.205.0302.00 Casing	1
3	<b>LF135/18</b>	<b>0.135.2001.00 Input Shaft</b>	<b>1</b>
3		<b>Shortened shaft Input Shaft for LF205H-S</b>	<b>1</b>
4	LF135/11S	0.135.6008.00 Pinion	1
5	LF135/10	0.135.7105.00 Spacer	1
6	8.7.0.00693	8.7.0.00693 Oil Cap	1
7	LF135/4	1.135.7100.00 Protective Washer	1
8	8.0.1.00034	8.0.1.00034 Ball Bearing 6205 (25x52x15)	1
9	LF135/15	8.0.1.00870 Bearing 6207	1
10	LF135/9	8.0.1.00871 Bearing 6208	2
11	LF135/1	8.2.2.00515 Castle Nut	1
12	LF135/2	8.3.2.00409 Bolt Washer 25x44x4	1
13	LF135/19	8.4.1.00993 Parallel Key B 10x8x30	1
14	M10x20SZP	8.1.1.00054 Bolts M10x20	4

15	8.5.2.00030	8.5.2.00030 Snap Ring (80x82.5x2.5)	1
16	LF135/3	8.5.3.00955 Snap Ring SB 81	1
17	8.5.2.01358	8.5.2.01358 Snap Ring (52x55x2.5)	1
18	LF135/13	8.6.6.00201 3/8" Gas Solid Plug	2
19	LF135/5	8.7.1.00748 Dust Lip 40x80x12	1
20	8.7.3.00055	8.7.3.00055 Oil Seal 25x72x10	1
21	0.205.1300.00	0.205.1300.00 cover	1
22	0.244.7500.00	0.244.7500.00 Shim Kit (40.2x51.5)	2
23	8.5.1.00680	8.5.1.00680 Snap ring (40x37x2.5 for shafts)	1
24	0.267.7500.00	0.267.7500.00 Shim Kit (69x79.7) LF135/7	1
25	0.205.7100.00	0.205.7100.00 Grascare Name Plate	1
26	T4A/5	0.248.7500.00 Shim Kit (60.3x71.7)	1
27	8.5.2.00131	8.5.2.00131 Snap Ring (72x75x2.5)	1



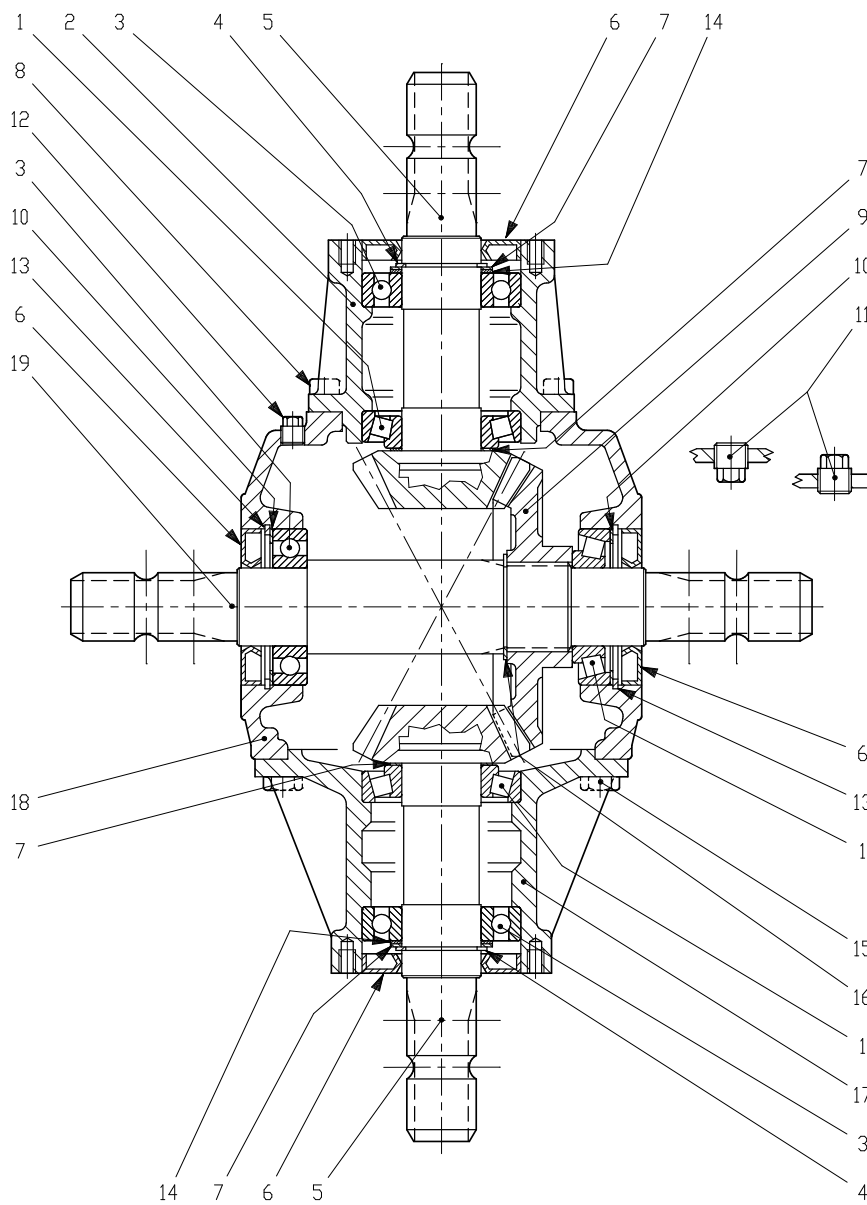
# LF205TH-205.874-1.92



Item	Part No	Description	Qty
1	0.135.5000.00	Crown Gear Z23 M5	1
2	0.205.0303.00	Casing (LF135/12)	1
3	0.135.2002.00	Shaft (LF135/25)	1
4	LF135/11S	Pinion Shaft	1
5	0.135.7105.00	Spacer (LF135/10)	1
6	8.7.3.01259	Double Lip Seal (LF135/14)	1
7	1.135.7100.00	Protective Washer (LF135/4)	1
8	8.0.1.00000	Bearing 6007 (35x62x14)	1
9	8.0.1.00870	Bearing 6207 (LF135/15)	1
10	8.0.1.00871	Bearing 6208 (LF135/9)	2
11	8.2.2.00515	Castle Nut (LF135/1)	1
12	8.3.2.00409	Bolt Washer (LF135/2)	1
13	8.4.1.00993	Parallel Key (LF135/19)	1
14	8.1.1.00054	Bolts M10x20	4
15	8.5.2.00030	Snap Ring (LF135/6)	1
16	8.5.2.00955	Snap Ring (LF135/3)	1

17	85200648	8.5.2.00648	LF205/17 Circlip	1
18	8.6.6.00201	8.6.6.00201	Plug (LF135/13)	2
19	8.7.1.00748	8.7.1.00748 (LF135/5)	Double Lip Seal (40X80X12V)	1
20	8.7.3.00055 (357210)	8.7.3.00055	Oil Seal 35x72x10 (T4A/1)	1
21	0.205.1300.00	0.205.1300.00	Cover (LF205EP)	1
22	0.244.7500.00	0.244.7500.00	Shim Kit	1
23	8.5.1.00680	8.5.1.00680	Snap Ring (40x37.5x2.5) (LF135/7)	1
24	0.267.7500.00	0.267.7500.00	Shim Kit (69x79.7) LF135/7	1
25	N/A	0.205.7100.00	Name Plate	1
26	0.248.7500.00	0.248.7500.00	Shim Kit (60.3x71.7)	1
27	8.5.2.00131	8.5.2.00131 (LF135/27)	LF205/27 Circlip	1
28	0.113.7500.00	0.113.7500.00 (LF135/16)	Shim	1

# T278A (278.221.10) (1:1.9 & 1:1) 4 way gearbox



Item	Part No	Description	Qty
1	8.0.9.00024	BEARING 30208	3
2	0.278.1347.00	EXTENSION	1
3	8.0.1.00871	BEARING 6208	3
4	8.5.1.00680	SNAP RING 40 UNI7436	2
5	0.278.5018.00	PINION SHAFT Z14 M5.64	2
6	8.7.3.00027	OIL SEAL 40X80X10	4
7	0.244.7500.00	SHIM KIT 40.3x51.5	4
8	8.1.2.00785	BOLT M8X22 12,9	8
9	0.130.5001.00	CROWN WHEEL Z27 M5.64	1
10	0.110.7500.00	SHIM 65.3x79.7	2
11	8.6.5.00006	PLUG 3/8"GAS	2
12	8.6.6.00271	PLUG 1/4"GAS	1
13	8.5.2.00030	SNAP RING 80 UNI7437	2
14	0.113.7100.00	SHIM	2
15	8.1.1.00061	BOLT M10X25 8,8	8
16	8.5.1.00260	SNAP RING 46 UNI7435	1
17	0.278.1300.00	EXTENSION	1
18	0.278.0303.00	CASING	1
19	0.278.3002.00	SHAFT 1"3/8 Z6	1

All MAJOR machines must be registered when sold, to ensure that you receive the correct warranty cover and service bulletins. To register your machine for warranty, please go to the SALES & SUPPORT section of our website [www.major-equipment.com](http://www.major-equipment.com) and enter your details.

The Grass & Slurry Machinery Specialists | Agricultural - Professional Groundscare - Industrial

MAJOR

HOME PRODUCTS ABOUT NEWS FIND A DEALER SHOP SALES & SUPPORT CONTACT

How To Videos  
Financing  
Request a Demo  
Technical Publications  
Brochures  
**Register your Machine**  
Frequently Asked Questions

# Register your Machine

### Product Registration Form

Please register your machine to ensure you get the correct warranty cover and service bulletins. Please provide your full postal address.

**Name \*** **Email \***

**Address \***

Address 1

Address 2



## Get In Touch

### Head Office

#### Major Equipment Intl Ltd

Ballyhaunis, Co. Mayo, F35 C891, Ireland

Tel: + 353 (0) 9496 30572

info@major-equipment.com

### UK Office

#### Major Equipment Ltd

Major Ind. Estate, Heysham, Lancs, LA3 3JJ, UK

Tel: + 44 (0) 1524 850501

ukinfo@major-equipment.com

### Netherlands Office

#### Major Equipment Intl Ltd (EU)

Postbus 29, NL-7700 AA Dedemsvaart, Nederland

Tel: + 31 (0) 6389 19585

euinfo@major-equipment.com

@MAJOREQUIPMENT



[www.major-equipment.com](http://www.major-equipment.com)