

TRI-DECK

Roller Mowers

Winged, Trailed

Models in this range: TDR-16000 and TDR20000

The MAJOR TDR range leads the market in wide area mowers. There are two cutting widths available: 4.9m and 6.1m.

The patented three point pivot system allows the machine to glide over the ground contours eliminating scalping of the grass. The blades are synchronised to rotate in opposite directions and overlap each other by 75mm to ensure a perfect finish every time.

In short grass this mower leaves a professional striped finish equivalent to that of a cylinder mower. The gear driven drive line allows this machine to easily cope with heavier conditions. The machines wings can be folded up to a 90° angle giving a transport width of 2.5m.

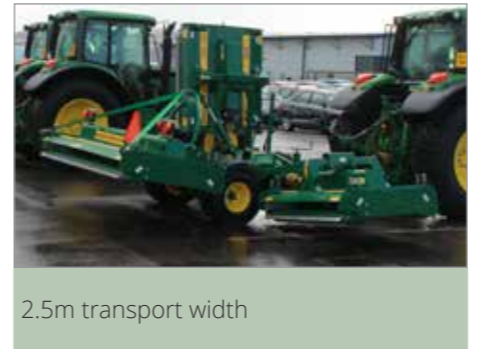


I was sceptical at first at how the rotary blades would compare to reels, but having seen the results elsewhere I knew it was the machine for us. I particularly like the rollers at both front and back which give a good levelling effect, but also produces nice stripes.
Michael Irlam, Stobart Polo Club

- ✓ LED road lighting kit
- ✓ Remote control option
- ✓ Internal roller bearings give total protection against moisture and soil
- ✓ Walterscheid wide angle PTO drive shaft
- ✓ supplied as standard
- ✓ Wings can be operated independently
- ✓ The rear deck can be removed and used independently of the wings
- ✓ Braked axle available as an optional extra



Scan the QR code to see a working video



2.5m transport width



LED road lighting kit

Product specifications

Model	TDR16000	TDR20000
Working Width	4.90m (16')	6.10m (20')
Transport Width	2.50m (8' 3")	2.50m (8' 3")
Power (HP)	65-100 HP	75-120 HP
PTO rpm	540	540
Cutting Height	12-150mm	12-150mm
Rotors	8	10
Blades	32	40
Weight	2260kg	2675kg
Blade tip speed	76m/s	76m/s
Mowing Rates (Acres/hr at 7mph)	13.22	16.58